

BURN PIT CHEMICAL PROFILE (PHASE I)

MPR 81-0547

*Andy - keep*

PROPOSED EFFORT TO BE PERFORMED BY:  
SSFL ANALYTICAL CHEMISTRY UNIT, M & P

Submitted by

*Norma Fujikawa*

N. S. Fujikawa, Manager  
SSFL Analytical Chemistry  
Adv. Mat. & Mfg. Technology  
Materials & Producibility

Approved:

*J. H. Lieb*

J. H. Lieb, Manager  
Adv. Mat. & Mfg. Technology  
Materials & Producibility

Approved:

*D. L. Fulton*

D. L. Fulton, Director  
Materials & Producibility



BNA03472432

## BURN PIT CHEMICAL PROFILE (PHASE I)

### Reference:

Bjorklund letter to Regional Water Quality Control Board, 4 March 1981 (81RC02364), Re: Inactive Burning and Disposal Site ("Burn Pit")

### SUMMARY

This work plan delineates in detail how the site will be examined on a "first pass" basis to appropriately estimate the level of effort that will be required for Phase II, the rigorously conducted sampling and analysis according to the guidelines established in the EPA manual of test procedures covering such situations, "Test Methods for Evaluating Solid Wastes", (SW-846, 1980), published by the Office of Water and Waste Management. This work plan also recommends the use of various other technical disciplines (geologist, ground water specialist) and other laboratory services (Pacific Spectrochemical, West Coast Technical Services, Rockwell Environmental Monitoring Center) as well as literature reviews on appropriate activities and consulting firms that Rocketdyne may wish to consider. In addition, this presentation includes the labor estimate for this assignment as well as the capital equipment that may be required for Phase II. A proposed work schedule is submitted with targeted completion dates to provide flexibility according to the chemical analysis results.

### BACKGROUND

#### General Site History

The "Burn Pit" site was established in approximately 1958 for the safe disposal of chemical fuels by combustion in order to minimize potential public exposure which could result from transport across public highways to dispose in a conventional landfill. This site was operated by qualified Rocketdyne Protective Services personnel until 1971. At that time, the site was closed because of air pollution considerations. Since its closure, the site has been essentially inactive with the exception of a few fire department demonstrations and training



BNA03472433

exercises to maintain their proficiency in dealing with chemical fires and emergency incidents.

#### Site Description

Located in Rocketdyne's 2,400-acre Santa Susan Test Facility (SSFL) is a six-acre area which is referred to as the "Burn Pit". Within the bounds of the six-acre area are six pits which range in volume from approximately 200 gallons to 10,000 gallons. Of these six pits, three of them are lined with concrete and three unlined earthen pits. The enclosed maps give the geographic location, topography, draining outfalls and a rough plan of the "Burn Pit".

#### Area Water Run Off

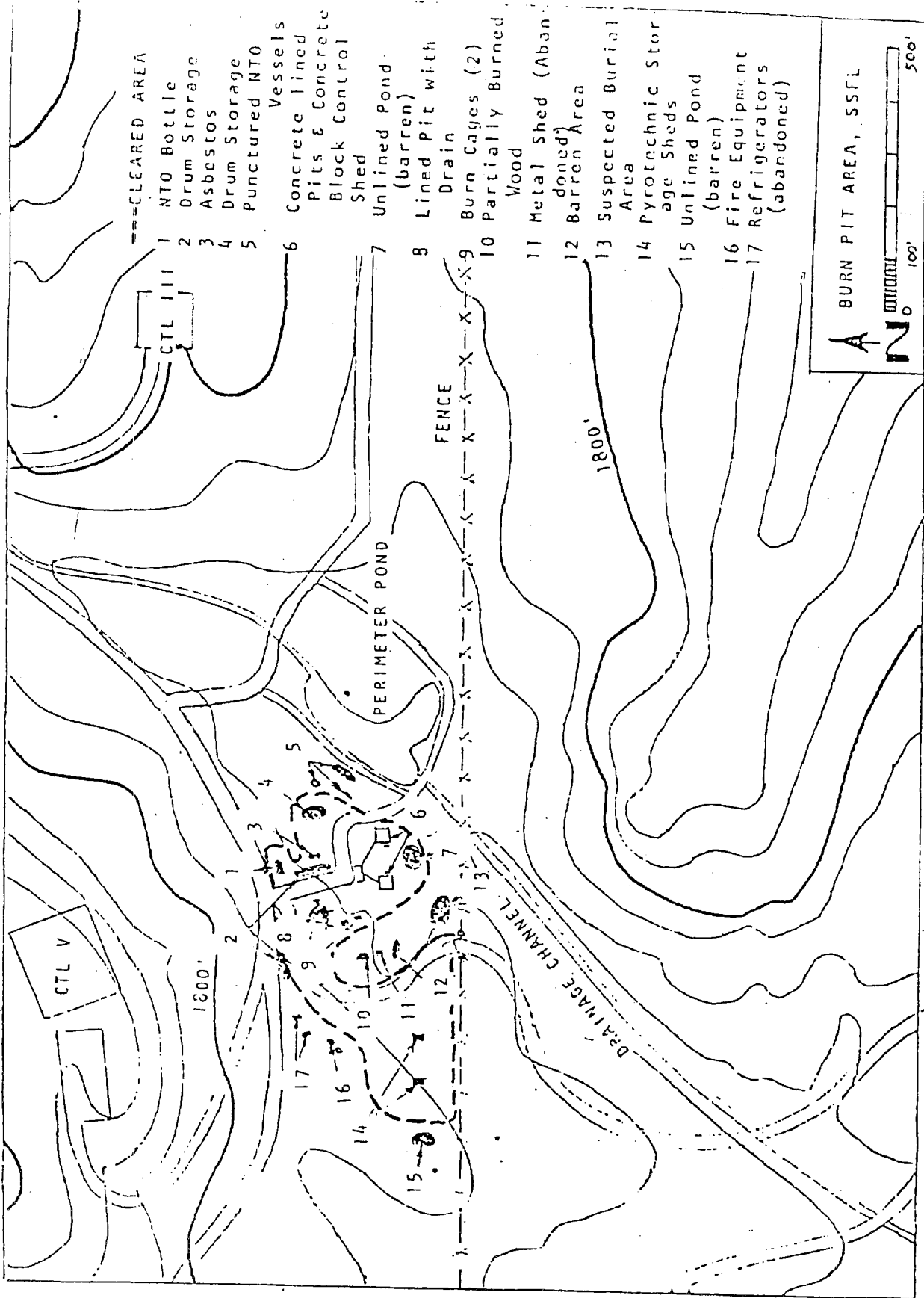
A preliminary review of the water runoff has led the Rocketdyne Environmental Control Office to believe that no dischargeable hazardous residues resulted from the combustion processes. Routine sampling at the adjacent perimeter pond has not shown any unusual concentrations of any of the substances required to be sampled by the current NPDES permit (expiration date = August 31, 1981). It is believed, therefore, that surface runoff is not the problem.

#### Ground Water

The Rocketdyne SSFL is serviced by one well which is maintained by Rocketdyne. Two additional wells are planned to be brought on line in six (6) months. None of these wells are located near the burn pit area and are upgradient. Rocketdyne believes that there has been no ground water contamination resulting from the past activities in the burn pit area. This conclusion is based on an evaluation of the type of the disposal practices which were employed and a 1958 geologic and hydrologic survey of the underground water conditions. The study was performed by C. C. Killingsworth, a consulting geologist from Los Angeles, whose findings revealed that "the overall average effective porosity appears to be less than one percent (1%) over the 2,000 acres of property". Furthermore, of the wells that have been driven or that are currently in operation, the distance from the surface to reach the aquifer is of the order of 415 feet.







**A**

**N**

BURN PIT AREA, SSFL

100'

500'



BNA03472436

## WORK STATEMENT

The California Department of Health Services prepared a document on "Samplers and Sampling Procedures for Hazardous Waste Streams" that offers the approach consistent with the Burn Pit chemical profile. Thus, the attached procedures submit a plan of action to maximize safety of sampling personnel, minimize sampling time and cost, reduce errors in sampling, and protect the integrity of the samples after sampling.

1. The background information about the Burn Pit has been researched and is submitted as Table 1, ("SUMMARY OF MATERIALS AND DISPOSAL METHODS"). Records have been kept for years on the general pond/water system/runoff chemical constituency, so that Rocketdyne's pollution control program has voluminous documentation on constituents that required reporting under the NPDES permit currently held. These records substantiate that surface runoff has been monitored continually. Rocketdyne has had voluntary projects as well as complying with all the existing regulations and codes of the agencies during the time frame and with the perspective that applied, nationally, before the advent of legislation that more specifically addressed the need for restrictive environmental controls.

2. A list is attached that describes the constituents for which the analyses may be performed. See Table 2, ("SUMMARY OF CHEMICAL CONSTITUENT TESTS"), that has been compiled from the data assembled and tabulated as in Table 1.

5



BNA03472437

TABLE 1 - SUMMARY OF MATERIALS AND DISPOSAL\* METHODS

<u>Type of Material</u>	<u>Volume or Mass</u>	<u>Disposal Method</u>
A. Fuels	450,000 gallons	
1. Nitrogen Tetroxide		Combustion
2. Misc. Contaminated Fuels		Combustion
3. Pentaborane		Combustion
4. RP-1 (Kerosene Base)		Combustion
5. JP-4 (Kerosene Base)		Combustion
6. Hydrazines		Combustion
7. Triethyl Aluminum		Combustion
8. Triethyl Aluminum Borane		Combustion
B. Igniters	#6924	Detonation
C. Process Chemicals	21,300 gallons	Dilute and place in earthen pits
1. Acids		
2. Bases		
D. Reactive Metals	13,810 pounds	
1. Aluminum		Burning
2. Magnesium		Burning
3. Sodium		Burning
4. Potassium		Burning
E. Organic Solvents	31,717 gallons	
1. Tetraisobutylene		Combustion
2. Alcohols		Combustion
3. Heptane		Combustion
F. Explosives	5,121 pounds	
1. Nitrocellulose		Detonation
2. Mix Oxides		Detonation
3. Dynamite		Detonation
G. Toxic Gases	32,932 feet <sup>3</sup>	
1. Oxygen Difluoride Gas		Combustion
2. Fluorine Gas		Combustion
3. Chlorine Gas		Combustion
H. Heavy Metal Toxics	191 gallons	
1. Leaded Paint (189 gallons)		Combustion
2. Potassium Cyanide		Combustion
3. Sodium Arsenite		Dilution
4. Mercury		Dilution

\*NOTE: From Fed. Register, May 19, 1980, p. 33119: "A material is 'disposed of' if it is discharged, deposited, injected, dumped, spilled, leaked or placed into or on any land or water so that such material or any constituent thereof may enter the environment or be emitted into the air or discharged into ground or surface waters."

6



BNA03472438

TABLE 2 - SUMMARY OF CHEMICAL CONSTITUENT TESTS

The fundamental first step prior to the various separations into classes and groups of compounds is called the Extraction Procedure (Federal Register, Vol. 45, No. 98, Monday, May 19, 1980, E. Section 261.24, Characteristic of E. P. Toxicity). The equipment required to perform this operation has been ordered and should arrive by August 1, 1981. Thus, the following list includes the analytical chemistry protocol that utilizes the manipulations cited by the Federal Register methodology as appropriate and designed to identify wastes likely to leach hazardous concentrations of particular toxic constituents into the groundwater supply.

7



BNA03472439



IDENTIFICATION OF HAZARDOUS WASTE

EPA REG. 40-261

• IGNITABLE

• CORROSIVE

• REACTIVE

• EXTRACTION PROCEDURE TOXIC

• ACUTE HAZARDOUS

• TOXIC

P H A S E I

COMPACTION

TESTER

\$ 185

PULVERIZER

\$ 645

ROTARY

EXTRACTOR

\$2100

PRESSURE

FILTER

\$1100

PHOTO-IONIZATION

DETECTOR

\$3500

SONIC

DISMEMBRATOR

\$1211

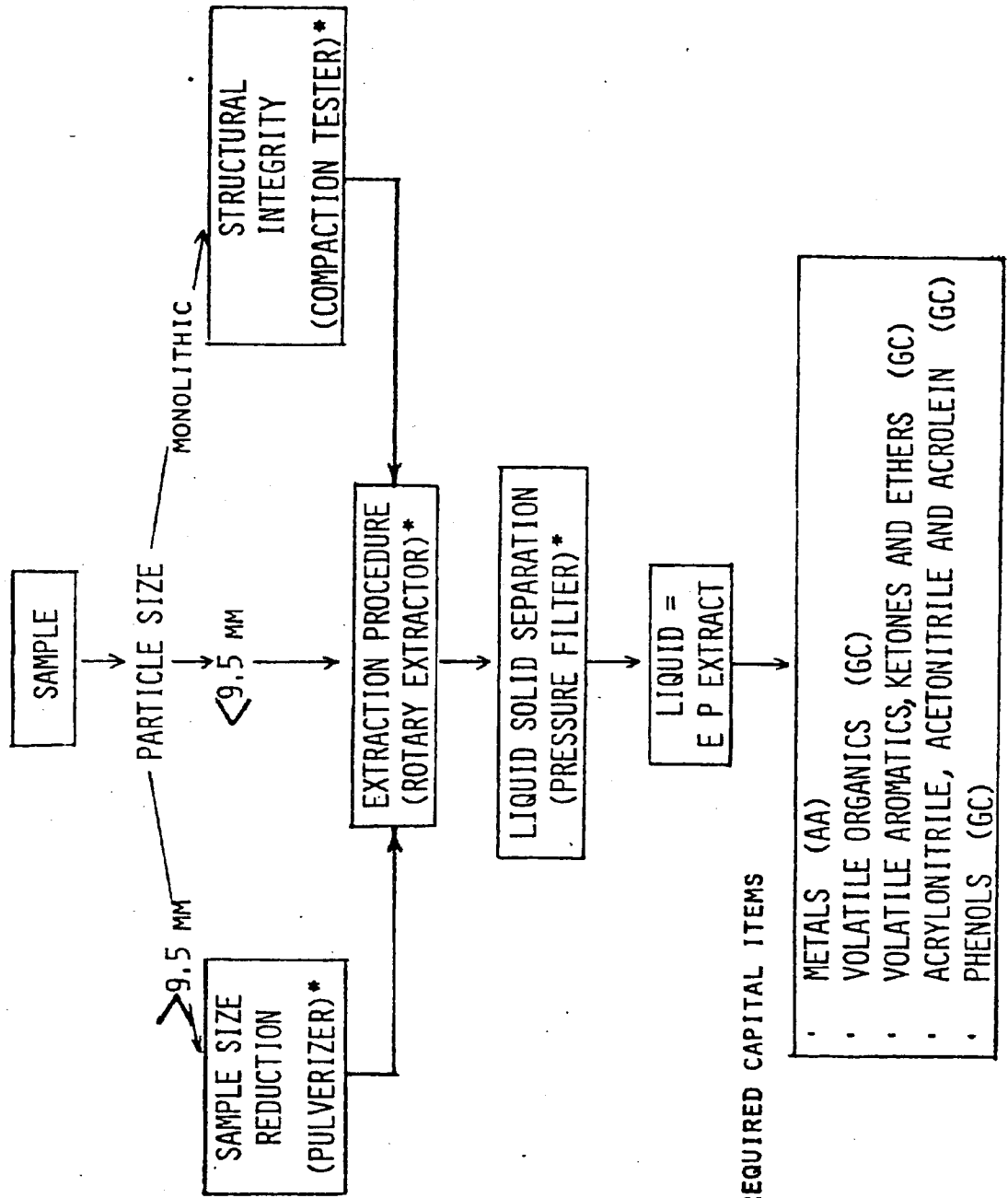
SHOULD  
ARRIVE  
BY  
AUGUST,  
1981

8



BNA03472440

TEST PROCEDURE FOR DRY SAMPLE EXTRACTION

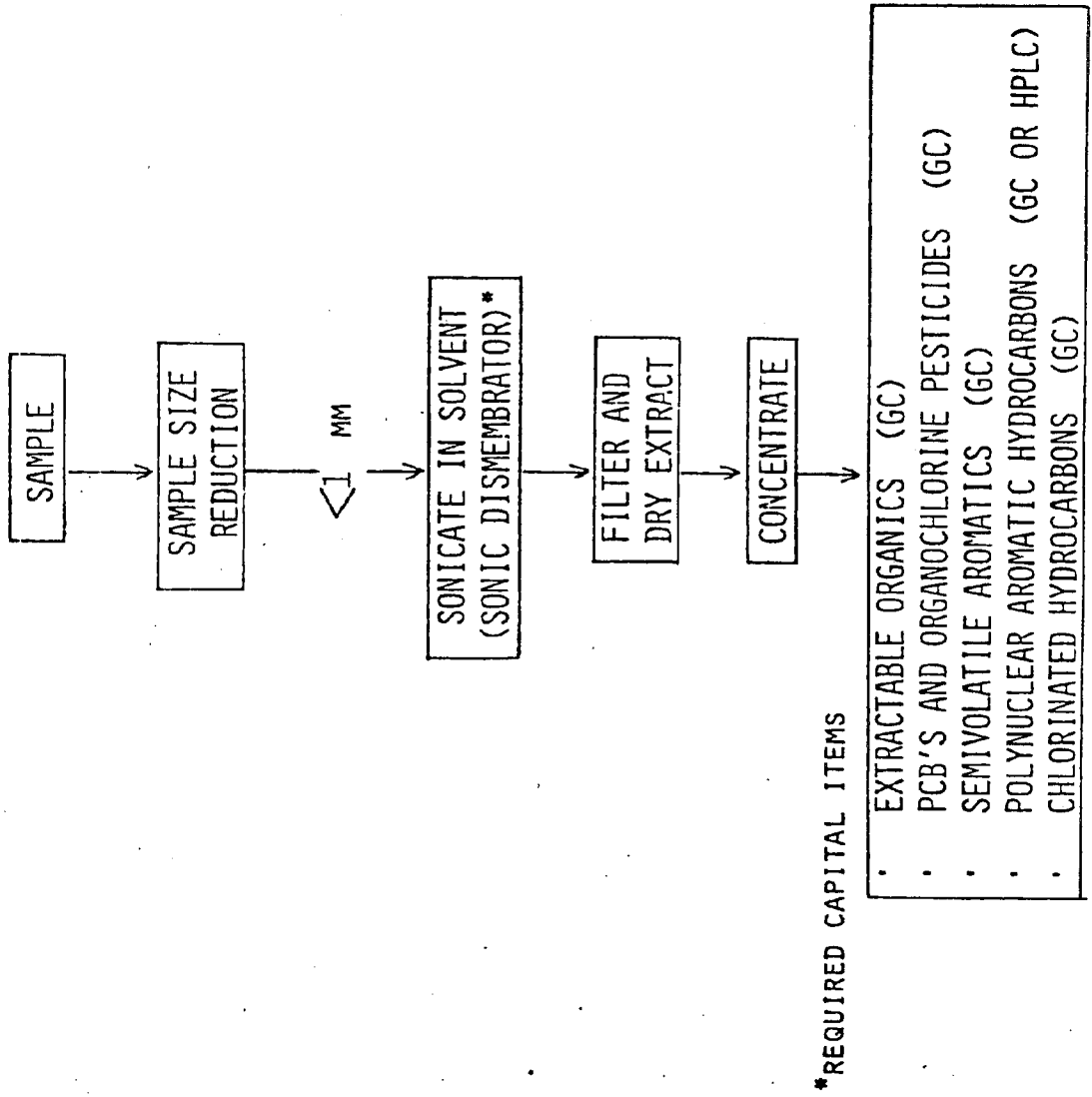


\*REQUIRED CAPITAL ITEMS

- METALS (AA)
- VOLATILE ORGANICS (GC)
- VOLATILE AROMATICS, KETONES AND ETHERS (GC)
- ACRYLONITRILE, ACETONITRILE AND ACRYLEIN (GC)
- PHENOLS (GC)



TEST PROCEDURE FOR SONICATION METHOD



10



BNA03472442

TABLE 2 - SUMMARY OF CHEMICAL CONSTITUENT TESTS

<u>METALS</u> <sup>1</sup>	<u>VOLATILE ORGANICS</u> <sup>2</sup>	<u>OTHER ORGANICS</u> <sup>3</sup>	<u>ANIONS</u> <sup>4</sup>
Aluminum	Carbon tetrachloride	Benz (a) anthracene, pyrene	Chloride
Arsenic	Chlorobenzene	Benz (b) fluoranthene	Fluoride
Barium	Chloroform	Chrysene	Nitrate
Beryllium	Chloromethane	Creosote	Phosphate
Boron	Dichlorobenzene	Mercaptans	Sulfate
Cadmium	Dibromomethane	Napthalene	
Chromium	Ethyl ether	Phenols	
Copper	Formaldehyde	Pyridine	
Iron	Methanol	Toluene diisocyanate	
Lead	Methyl ethyl ketone		
Magnesium	Methyl isobutyl ketone		
Mercury	Tetrachloroethane		
Molybdenum	Tetrachloroethene		
Nickel	Trichloroethene		
Phosphorus	Trichloropropane		
Potassium	Vinyl chloride		
Selenium	Vinylidene chloride		
Silicon			
Silver			
Sodium	<u>VOLATILE AROMATICS, KETONES</u>		
Sulfur	<u>&amp; ETHERS AND NITRILES</u>		
Tin	Acetonitrile		
Titanium	Benzene		
Zinc	Chlorobenzene		
	Dichlorobenzene		
	Ethyl ether		
	Methyl ethyl ketone		
	Methyl isobutyl ketone		
	Toluene		
	Xylene		

1. By atomic absorption spectroscopy or emission spectrography.
2. By gas chromatography or high pressure liquid chromatography.
3. By sample preparation followed by gas chromatography.
4. By specific ion electrode/classical wet chemical techniques.
5. By colorimetric tests.

OR EQUALLY SUITABLE METHODS



BNA03472443

WORK STATEMENT (Continued)

3. The proper samplers will be selected in accordance with the State and EPA SW-846 manuals, as well as devices that are uniquely suited to the SSFL terrain.
4. The proper sample containers and closures will be obtained using the referenced regulatory documents as guides.
5. The sampling plan will include the choice of proper sampling points, and the number and volume of the samples to be taken, including the boring depth.
6. All proper sampling precautions will be observed.
7. The samples will be handled properly with the appropriate chain of custody paperwork.
8. All samples will be identified correctly and protected from tampering.
9. All sample information will be recorded and identified in a field notebook.
10. The chain of custody record will be completed.
11. The sample analysis request sheet will be filled out.
12. The samples will be submitted to the appropriate laboratory.
13. The results of the selected testing will be reviewed and decisions made where there are questions that need to be answered or issues resolved. If additional samples are required or further pretreatment or sample preparation necessitated, then actions will be taken to complete these tasks.
14. A report will be written summarizing the work performed, data generated, results found, and recommendations tendered. This report will be submitted to the Rocketdyne Environmental Control Office as the document covering PHASE I.

12



BNA03472444

## DISCUSSION

The sample collection would be performed by maintenance personnel specifically instructed in and assigned the task by Rocketdyne Facilities and Industrial Engineering management. A minimum of 50 samples would be obtained over the six-acre area. The specific sampling sites would be chosen by the Rocketdyne F & IE Burn Pit Project Engineer on the advice and counsel of those who have knowledge of the area and its history and drainage patterns so that representative sampling could be performed. The Rocketdyne Environmental Control Office would approve of the sampling grid prior to the execution of the undertaking so that the historical data on past events would provide guidance and direction for the sample handling. The choice of the chemical tests to accomplish the chemical profile of the Burn Pit area would be the responsibility of the Manager of the Rocketdyne M&P SSFL Analytical Chemistry Unit. If, in her opinion, samples were to be sent out to other laboratories, these decisions would be made and subsequent actions taken to accommodate the best technical resolution of the problem in the most expeditious and economical way.

## COST FOR CHEMICAL ANALYSIS FOR PHASE I ONLY

The pricing (as an internal control document) for the SSFL Analytical Chemistry Unit effort is attached as Table 3. The basic considerations are that from 50-100 samples would be submitted for chemical analyses, and that the number of constituents per sample, following the initial extraction procedure, could vary from 25 to 60 depending on type, matrix, level of complexity, and detection parameters.

13



BNA03472445

TABLE 3 - PRICING FOR CHEMICAL ANALYSIS ONLY  
(F & IE Sampling, etc. Not Included)

50 - 100 samples @ a minimum of 25 hours each = 1250 to 2500 hours

Every solid sample would be split and a portion would go out to Pacific Spectrochemical Labs for a semi-quantitative emission spectrographic determination for metals, at \$45/sample. Thus, this cost would be in the range of \$2250 to \$4500.

Special field sampling bags (for chain of custody identification) and other containers would run about \$200.

Chemical standards, liquid chromatography columns (at a current rate of \$400 each), and other calibration-type supplies would amount to about \$3000.

Therefore, the pricing for the SSFL Analytical Chemistry Unit effort is:

<u>MINIMUM, 50 SAMPLES</u>			<u>MAXIMUM, 100 SAMPLES</u>	
<u>\$</u>	<u>HOURS</u>		<u>\$</u>	<u>HOURS</u>
	1250	M&P Personnel & Burden Labor		2500
\$2,250		Emission Spec.	\$4,500	
\$ 100		Containers	\$ 200	
\$1,500		Chemical Standards	\$3,000	
<hr/>			<hr/>	
\$3,850	& 1250 Hrs.	<u>TOTAL</u>	\$7,700	& 2500 Hrs.

14



BNA03472446

## RECOMMENDATIONS

It is recommended herewith that several other activities take place concurrently with the "first pass" profiling of the Burn Pit area. These are:

- (1) Another geological and hydrological survey should be done by a professional firm with excellent credentials in this discipline. Newer techniques and methods should be available than those utilized in 1958 when C. C. Killingsworth made his evaluation. Stone being stone, the porosity values should remain the same, but perhaps other data about the SSFL property would be generated which would be helpful for the company's future plans as well as its heritage.
- (2) A review of the available literature should be made to ascertain how other companies have been handling the subject of hazardous wastes - particularly the aerospace waste generators since their activities and Rocketdyne's are similar. For example, TRW prepared a sixteen-volume report for the EPA on recommended methods of reduction, neutralization, recovery, or disposal of hazardous wastes (EPA #670/2-73-053-a).
- (3) Outside firms who are in good repute with the regulatory agencies should be consulted as to their general approach to this type of problem and a rough estimate of their charges, etc. for comparison with what might be necessary for Phase II of the Burn Pit Chemical Profile.
- (4) The possible capital equipment requirements for Phase II should not be overlooked if serious considerations are made about performing the project according to the full extent outlined in the EPA's SW 846 (Test Methods for Evaluating Solid Waste), on an in-house basis. This could easily amount to \$200,000 worth of equipment. Table 4 lists these. Although the Burn Pit project is viewed as a "one time thing", all indications and legislative proclamations point to continual examination of things on-site in order to reduce the dependency on the unavailable outside commercial disposal sites.

15



BNA03472447



TABLE 4 - CAPITAL EQUIPMENT REQUIREMENTS FOR PHASE II  
(PRELIMINARY ESTIMATE)

(Provided that the decision is made for the work to be done in-house by the SSFL Analytical Chemistry Unit)

<u>INSTRUMENT</u>	<u>APPROX. COST</u> <u>\$1981</u>	<u>PURPOSE</u>
Thermal Analysis Systems	\$32,000	Examine samples for reactivity according to the Federal Register - ASTM methods.
Ion Chromatograph	\$33,000	Excellent screening instrument for examining organic and inorganic ions more quickly than classical wet chemical techniques.
Inductively Coupled Plasma Atomic Emission Attachment for the Rocketdyne-owned Atomic Absorption Spectrophotometer	\$80,000	Rapid-fire analysis instrumentation <u>suggested</u> by EPA but not currently required because the whole package (aa+ICP) amounts to \$130,000.
Gas Chromatograph/ Mass Spectograph Computer Data + Tape Storage Systems	\$55,000	To provide the <u>accessible</u> data base of samples, standards, profiles already established at SSFL to use for all future cases as well as provide graphical representation of information gleaned in the event that litigation requires such declaration of technical data and performance of compliance.

16.



BNA03472448

Project & Task Title	Months from Start Date												
	1	2	3	4	5	6	7	8	9	10	11	12	
START FUNDING →													
Choose Sample Sites													
Logistics/Samples													
Sampling Performed													
Sample Prep/Emiss. Spec.													
Sample Extractions													
Metals Analyses													
Volatile Analyses													
Other Organics Analyses													
Anions Analyses													
Amines Analyses													
Other Analyses													
Resamples													
Hot Spot Add. Samples													
Monthly Prog. Rep.													
Data Reduction													
Mtg. W/Env. Office													
Eval./Other Reqmts													
FINAL REPORT													

PREPARED BY N. Fujikawa  
DATE 5/13/81 BY *N.S. Fujikawa*

17



REFERENCE DOCUMENTS

18



BNA03472450

Rocketdyne Division  
6633 Canoga Avenue  
Canoga Park, California 91304  
Telex: 698478

Rockwell  
International

4 March 1981

In reply refer to 81RC02364

MAR 12 1981

→ Regional Water Quality Control Board  
107 S. Broadway, Suite 4027  
Los Angeles, California 90012

Attention: Mr. Raymond M. Hertel, Executive Officer

Re: Inactive Burning and Disposal Site (File 81-18)

Gentlemen:

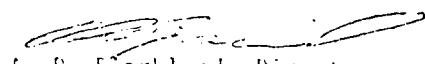
Rocketdyne is herewith submitting the historical data pertaining to the inactive disposal site known as the "Burn Pit" which is located at our Santa Susana Field Lab. This submittal is made in accordance with discussions with Mr. H. Yacoub and your letter dated February 19, 1981.

→ To assist in the assessment of the site, two information packages are being prepared; first, to provide historical background data for the site, and second, to provide a work plan delineating in detail how the site will be surveyed and analyzed. This package contains the historical background of the area. \*

General Site History

Very truly yours,

ROCKWELL INTERNATIONAL CORPORATION  
Rocketdyne Division

  
A. R. Bjorklund, Director  
Facilities & Industrial Engineering

ARB:pb

Enclosures: (3)

THE "BURN PIT  
PROPOSAL" GIVES  
THE WORK  
PLAN IF F&IE  
WANTS THE SSFL M&P  
LAB TO CONDUCT ALL  
THE CHEMICAL ANALYSES.

19



BNA03472451

Solid Waste



# Test Methods for Evaluating Solid Waste

## Physical/Chemical Methods

EPA SW-846  
1980

SSFC - ANALYTICAL CHEMISTRY

20



BNA03472452

TECHNICAL REPORT DATA <i>(Please read instructions on the reverse before completing)</i>		
1. REPORT NO. EPA-600/2-80-018	2.	3. RECIPIENT'S ACCESSION NO. PSC-135353
4. TITLE AND SUBTITLE Samplers and Sampling Procedures for Hazardous Waste Streams	5. REPORT DATE January 1980 (Issuing Date)	
	6. PERFORMING ORGANIZATION CODE	
7. AUTHOR(S) Emil R. deVera, Bart P. Simmons, Robert D. Stephens and David L. Storm.	8. PERFORMING ORGANIZATION REPORT NO.	
9. PERFORMING ORGANIZATION NAME AND ADDRESS Hazardous Materials Laboratory California Department of Health Services 2151 Berkeley Way Berkeley, CA 94704	10. PROGRAM ELEMENT NO. C7301C, SOS #1, Task 32	
	11. CONTRACT GRANT NO. R 804692010	
12. SPONSORING AGENCY NAME AND ADDRESS Municipal Environmental Research Laboratory-- Office of Research and Development U.S. Environmental Protection Agency Cincinnati, Ohio 45268	13. TYPE OF REPORT AND PERIOD COVERED Final	
	14. SPONSORING AGENCY CODE EPA/600/14	
15. SUPPLEMENTARY NOTES Richard A. Carnes, Project Officer (513/684-7871)		
16. ABSTRACT The goal of this project was to develop simple but effective sampling equipment and procedures for collecting, handling, storing, and recording samples of hazardous wastes. The report describes a variety of sampling devices designed to meet the needs of those who regulate and manage hazardous wastes. Particular emphasis is given to the development of a composite liquid waste sampler, the Colivasa. This simple device is designed for use on liquid and semi-liquid wastes in a variety of containers, tanks, and ponds. Devices for sampling solids and soils are also described.  In addition to the sampling devices, the report describes procedures for development of a sampling plan, sample handling, safety precautions, proper recordkeeping and chain of custody, and sample containment, preservation, and transport. Also discussed are certain limitations and potential sources of error that exist in the sampling equipment and the procedures. The statistics of sampling are covered briefly, and additional references in this area are given.		
17. KEY WORDS AND DOCUMENT ANALYSIS		
a. DESCRIPTORS Samplers Lagoons (ponds)--waste disposal Hazardous materials	b. IDENTIFIERS/OPEN ENDED TERMS Representative sampling Composite sampling Sampling plans Sampling procedures Hazardous waste Composite liquid waste sampler	c. COSATI Field Group 68C
18. DISTRIBUTION STATEMENT Release unlimited	19. SECURITY CLASS (This Report) unclassified	
	20. SECURITY CLASS (This page) unclassified	21. PRICE F05 F01

DA Form 2220-1 (9-73)

U.S. GOVERNMENT PRINTING OFFICE: 1974-144-1000



BNA03472453

BIBLIOGRAPHIC DATA SHEET		1. Report No. EPA-670/2-73-053-a	2.	PB 224 580	
3. Title and Subtitle Recommended Methods of Reduction, Neutralization, Recovery, or Disposal of Hazardous Waste. Volume I, Summary Report			5. Report Date Issuing date - Aug. 1973		
7. Author(s) R. S. Ottinger, J. L. Blumenthal, D. F. Dal Porto, G. I. Gruber, M. J. Santy, and C. C. Shih			8. Performing Organization Rept. No. 21485-6013-RU-00-4-1		
9. Performing Organization Name and Address TRW Systems Group, One Space Park Redondo Beach, California 90278			10. Project/Task/Work Unit No.		
			11. Contract/Grant No. 68-03-0089		
12. Sponsoring Organization Name and Address National Environmental Research Center Office of Research and Development U.S. Environmental Protection Agency Cincinnati, Ohio 45268			13. Type of Report & Period Covered Final		
			14.		
15. Supplementary Notes Volume I of 16 volumes.					
16. Abstracts A summary of the work performed on the hazardous waste research project is presented in the first volume of the 16 volume report. The report includes an updated listing of hazardous waste stream constituents, an evaluation of the adequacy of current waste management practices for these materials, and an identification of the research and development required to provide necessary information or develop adequate treatment methods. The results of this study clearly indicate the requirement for a system of National Disposal Sites to provide a repository for certain classes of hazardous waste stream constituent residues which must be stored and monitored permanently to avoid harm to the public and/or the environment. <					
17. Key Words and Document Analysis. 17a. Descriptors Hazardous Waste National Disposal Site Waste Management Treatment Methods					
17b. Identifiers/Open-Ended Terms					
Reproduced by <b>NATIONAL TECHNICAL          INFORMATION SERVICE</b> <small>U.S. Department of Commerce          Springfield, VA. 22151</small>					
17c. COSATI Field/Group 06F; 06T; 07B; 07C; 07E; 13B; 13H; 19A; 19B					
1. Availability Statement Release to public.			19. Security Class (This Report) UNCLASSIFIED		21. No. of Pages
			20. Security Class (This Page) UNCLASSIFIED		22. Price

22



BNA03472454

RECOMMENDED METHODS OF  
REDUCTION, NEUTRALIZATION, RECOVERY  
OR DISPOSAL OF HAZARDOUS WASTE  
Volume I. Summary Report

By

R. S. Ottinger, J. L. Blumenthal, D. F. Dal Porto,  
G. I. Gruber, M. J. Santy, and C. C. Shih  
TRW Systems Group  
One Space Park  
Redondo Beach, California 90278

Contract No. 68-03-0089  
Program Element No. 1D2311

Project Officers

Norbert B. Schomaker  
Henry Johnson  
Solid and Hazardous Waste Research Laboratory  
National Environmental Research Center  
Cincinnati, Ohio 45268

Prepared for  
OFFICE OF RESEARCH AND DEVELOPMENT  
U.S. ENVIRONMENTAL PROTECTION AGENCY  
WASHINGTON, D.C. 20460

ib

23



BNA03472455



REVIEW NOTICE

The Solid Waste Research Laboratory of the National Environmental Research Center - Cincinnati, U.S. Environmental Protection Agency has reviewed this report and approved its publication. Approval does not signify that the contents necessarily reflect the views and policies of this Laboratory or of the U.S. Environmental Protection Agency, nor does mention of trade names of commercial products constitute endorsement or recommendation for use.

The text of this report is reproduced by the National Environmental Research Center - Cincinnati in the form received from the Grantee; new preliminary pages and new page numbers have been supplied.



## FOREWORD

Man and his environment must be protected from the adverse effects of pesticides, radiation, noise and other forms of pollution, and the unwise management of solid waste. Efforts to protect the environment require a focus that recognizes the interplay between the components of our physical environment--air, water, and land. The National Environmental Research Centers provide this multidisciplinary focus through programs engaged in:

- studies on the effects of environmental contaminants on man and the biosphere, and
- a search for ways to prevent contamination and to recycle valuable resources.

Under Section 212 of Public Law 91-512, the Resource Recovery Act of 1970, the U.S. Environmental Protection Agency is charged with preparing a comprehensive report and plan for the creation of a system of National Disposal Sites for the storage and disposal of hazardous wastes. The overall program is being directed jointly by the Solid and Hazardous Waste Research Laboratory, Office of Research and Development, National Environmental Research Center, Cincinnati, and the Office of Solid Waste Management Programs, Office of Hazardous Materials Control. Section 212 mandates, in part, that recommended methods of reduction, neutralization, recovery, or disposal of the materials be determined. This determination effort has been completed and prepared into this 16-volume study. The 16 volumes consist of profile reports summarizing the definition of adequate waste management and evaluation of waste management practices for over 500 hazardous materials. In addition to summarizing the definition and evaluation efforts, these reports also serve to designate a material as a candidate for a National Disposal Site, if the material meets criteria based on quantity, degree of hazard, and difficulty of disposal. Those materials which are hazardous but not designated as candidates for National Disposal Sites, are then designated as candidates for the industrial or municipal disposal sites.

A. W. Breidenbach, Ph.D., Director  
National Environmental Research Center  
Cincinnati, Ohio



## ACKNOWLEDGMENT

This program owes much to the program monitors and other staff of the Environmental Protection Agency who provided both advice and insight toward shaping this final report. Special thanks go to the program monitor, Mr. Henry Johnson, his predecessor, Dr. Lynn Wallace, and the staff of the Solid Waste Research Laboratory, National Environmental Research Center, Cincinnati, who have reviewed progress and provided information throughout the program. Thanks are also due to the staff of the Resource Recovery Division, Office of Solid Waste Management Programs, Washington, D.C., particularly Messrs. Sam Morekas, Don Marlow, Al Hayes, and Tom Gross, who also reviewed program progress, made constructive suggestions, and coordinated this project with the related projects sponsored by their organization.

This project relied very heavily on information obtained by personal communication and, therefore, much thanks is due to the individuals providing information. The industrial contacts are too numerous to mention specifically; however, certain individuals within the government sector were especially important in obtaining military and radioactive waste data. The collection of military hazardous waste data was coordinated through Col. Herbert Bell, Office of the Deputy Assistant Secretary of Defense for Environmental Quality, and Col. Walsh, Major Donald Rogers, and other members of the Department of Defense Environmental Pollution Control Committee. Information on radioactive wastes was obtained through Mr. Alex F. Perge, Assistant Director for Operations, Division of Waste Management and Transportation, Atomic Energy Commission, Washington, D. C., Mr. Lou Meyers, Office of Radiation Programs, Environmental Protection Agency, Rockville, and Mr. Charles Hardin of the Kentucky State Department of Health.

\* The important efforts of our major subcontractors, Hazelton Laboratories and Rollins Environmental Services, deserve appreciation as much information necessary to the successful completion of the project was obtained from



their programs. Finally, the contributions of our editor, Mrs. Marilyn Jennings, and of our secretarial staff have been extremely important to the preparation of our voluminous monthly reports and this final report. We appreciate their efforts.



# Maps organize hazardous materials spill data

**National Transportation Safety Board maps present time-sequenced data from past spills for researchers, emergency response teams**

"We need data," was the plea heard concerning hazardous materials transportation accidents.

There are models showing how hazardous materials will behave in a spill. But "one equation says you'll be burned to a cinder. Another says you'll be pleasantly warm."

That concern for data was expressed in support of a new program that had just been described at the 14th loss prevention symposium, held during the 88th National Meeting of the American Institute of Chemical

Engineers in Philadelphia early this month. The program involves development of hazardous materials accident spill maps by the National Transportation Safety Board.

The maps were devised by NTSB following a 1978 special investigation that indicated a need by researchers, mathematical modelers, emergency response personnel, and others for data to support predictions about how hazardous materials could be expected to behave in an accident. They are being developed under the office of Ludwig Benner Jr., chief of NTSB's hazardous materials division.

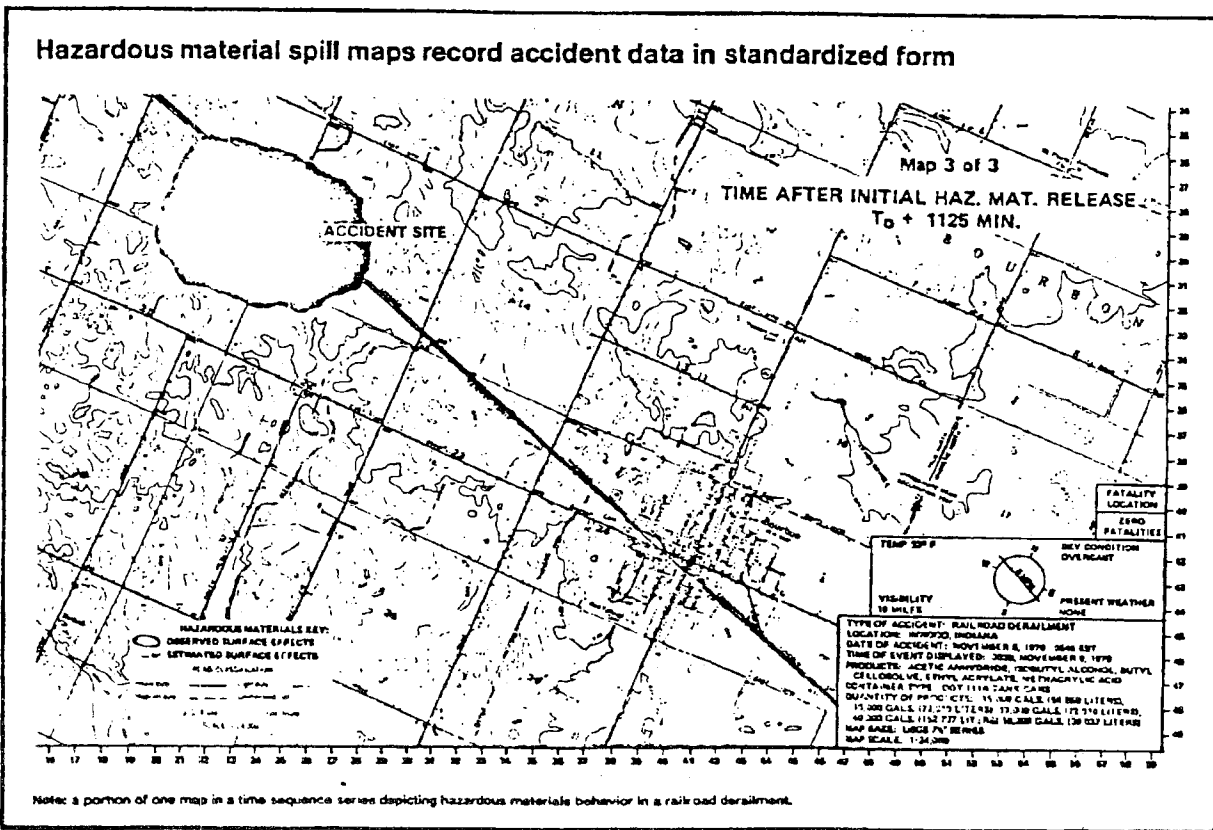
The idea of the maps, NTSB hazardous materials safety specialist Rebecca A. Rote told the symposium, is to report observed behavior of hazardous materials in an accident in a standardized format. NTSB considers its current standardized way of reporting the data as tentative and is

soliciting comments and suggestions from interested parties. It expects to propose a final standardized system by the end of this year.

The spill maps feature a time-sequenced display of dispersion patterns and ranges, weather at the times reported, injury/fatality exposure locations, and a synopsis of the accident scenario.

So far, NTSB has published maps for five accidents:

- Map 79-1: On Dec. 15, 1978, a railroad locomotive struck a tank semitrailer containing 7500 gal of liquefied anhydrous ammonia on a grade crossing near Boutte, La. The ammonia vaporized and formed a ground fog 30 to 40 feet high over a 1000-foot radius within 10 minutes. More than 18 tons of anhydrous ammonia escaped during this time, and ammonia continued to be vented for four hours after the collision. Three motorists within 200 feet of the



crossing died from ammonia inhalation, although the truck driver was not affected.

• Map 79-2: On April 8, 1979, a train derailment near Crestview, Fla., involved cars containing anhydrous ammonia, acetone, methanol, chlorine, phenol, carbon tetrachloride, sulfur, and urea. Flammable liquid and noxious gases were released through ruptures and punctures in the tank car shells, resulting in propulsive venting and fire. Flammable liquid flowed down an embankment toward a trestle and ignited. And an anhydrous ammonia car tank rocketed, injuring a motorist 450 feet from the tracks. By an hour and a half after the accident, winds had dispersed the escaping gas plume over a 15-square-mile area, extending 5 miles downwind.

• Map 79-3: On Oct. 24, 1978, a 30-inch pipeline transporting natural gas at 560 psi ruptured near Pearland, Tex. The gas was ignited by an unknown source, resulting in an explosion and fire. The fire's initiation was described as having been wide and low, gradually rising as a column of fire between 300 and 500 feet high. The blaze was estimated to have been up to 200 feet in diameter. Six persons were killed and 41 persons were hospitalized.

• Map 80-1: On Aug. 30, 1979, a freighter on the Mississippi River struck a docked butane tank barge loaded with about 283,500 gal of liquefied petroleum gas. The freighter ruptured at least one of the tanks, and escaping LPG formed a vapor cloud that engulfed the freighter and was ignited by an unknown source. The burning gas formed a fireball hundreds of feet high that lasted less than one minute and ignited combustibles on the freighter, the dock, a towboat, and the nearby shoreline. Of 34 persons hospitalized for burns, nine died. Three bodies were recovered from the river.

• Map 80-2: On Nov. 8, 1979, a train derailed near Inwood, Ind., and flammable and corrosive products leaked from eight breached tank cars. A small fire was noted later at the derailment site. The derailed cars contained acetic anhydride (leaked), butyl cellosolve (leaked), butyl methacrylate, ethyl acrylate (leaked), ethyl chloride, ethylene oxide, isobutyl alcohol (leaked), methacrylic acid (leaked), propylene naphtha, propylene oxide, sodium hydroxide, and vinyl acetate. Nearby residents reported symptoms of nausea, headache, dizziness, watering eyes, burning throat, nasal irritation, congestion, and tightness in the chest, in addition to an "obnoxious, acid-type odor." In addition to airborne and

surface effects the release led to subsurface effects as the chemicals leached into the soil.

In its 1978 investigation, NTSB heard from emergency response personnel, who reported problems encountered in developing pre-emergency plans and making tactical decisions during emergencies such as these. For preplanning or on-scene decision making, Rote explains, emergency response personnel need answers to five questions: Where is the hazardous material or container likely to go if released during the emergency? Why is the hazardous material likely to go there? When is the material likely to go there? How will the material get there? What harm will occur when the material gets there?

To meet users' needs, NTSB established some basic criteria for map base choice, information content, and layout. It considered essential a map base with a uniform scale, available nationwide, at low cost to all users. For this purpose, it chose the U.S. Geological Survey 7½-minute series, 1:24,000 scale, topographic map series as the standard mapping base. The standard also provides for scales of 1:12,000 or 1:6000 to permit reporting of small release patterns.

In mapping, Rote points out, time sequencing is important for emergency response personnel. Consequently, maps try to show the growth of the hazardous material dispersion pattern, changes in area affected due to environmental conditions such as wind direction, changes in number of people affected, or other changes in the hazardous material behavior that affect emergency response actions.

Both surface and airborne effects are displayed from observed data, supplemented by estimates suggested by comments of witnesses. A shaded area is used to show estimated surface effects, with solid lines enclosing observed surface effect patterns. A dotted line represents the boundary of airborne effects, and a dashed line the observed boundary.

Weather conditions at the times mapped are displayed in a block indicating wind direction and speed, sky condition, precipitation, visibility, and air temperature. An x,y coordinate grid system is used to pinpoint the locations of fatal exposures. And descriptive data about the accident are provided in a box containing type of accident, date and time of accident, time of event displayed, time after initial hazardous material release, product released, map base, and map scale.

NTSB expects the spill maps to find a number of applications—for example, model verification, release

NEWS

Chemical & Engineering

K.  
J.  
ES.  
I  
9  
7  
18  
0

June 23, 1980  
Volume 58, Number 25  
GENEAR 58 (25) 1-86  
ISSN 0009-2347

29

70

June 23, 1980 C&EN 47

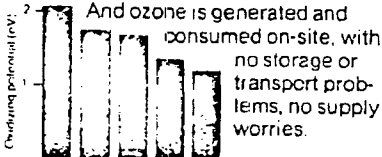


BNA03472461



O<sub>3</sub>: higher potential than permanganate.

Higher than peroxide. Higher than chlorine. Higher than chromic acid



And ozone is generated and consumed on-site, with no storage or transport problems, no supply worries.

O<sub>3</sub>: no residues, no pollution.

Ozone contributes nothing but oxygen to the oxidation process. Leaves nothing but oxygen to deal with. No complicated residues, no disposal headaches. It's as simple as 2O<sub>2</sub> → 3O<sub>3</sub>.

O<sub>3</sub>: grams/hour to tons/day.

Welsbach makes a full line of ozonators for production from a few grams per hour for lab R&D to tonnage quantities per day for chemical processing, waste treatment, and odor control. Find out more:

request our free booklet, *Putting Ozone to Work*. Welsbach Ozone Systems Corporation, 2409 W. Westmoreland St., Pine PA 19129. Phone 215-226-6900. Telex 831756



**Welsbach**

CIRCLE 36 ON READER SERVICE CARD

comparisons, and accident simulations. Also, Rote points out, mapping may be expanded from recording releases due to transportation accidents to mapping other types of releases, such as at storage or manufacturing facilities. Regulatory agencies might also find the maps useful.

NTSB expects that in the future spill maps will aid on-scene response activities. Stored maps and associated data could be recalled at a one-call information center to help local

emergency personnel during an actual emergency.

Although NTSB is preparing the maps now, it expects that eventually it will be necessary to establish a clearinghouse for map publication and distribution. The Safety Board, Rote points out, isn't equipped to handle such a large project, which would likely include maps for non-transportation uses. Thus, public or private agencies may have to share the task. □

## Changing priorities may reshape oil refineries

Before crude oil prices soared in the mid-1970's, a popular technical exercise was depicting the petroleum refinery of the future. In addition to being a source for the usual mix of fuels, the future refinery was often viewed as a source of an ever greater number of feedstocks and even some consumer chemicals. The trend would be toward bigger and more complex refineries serving a greater variety of customers.

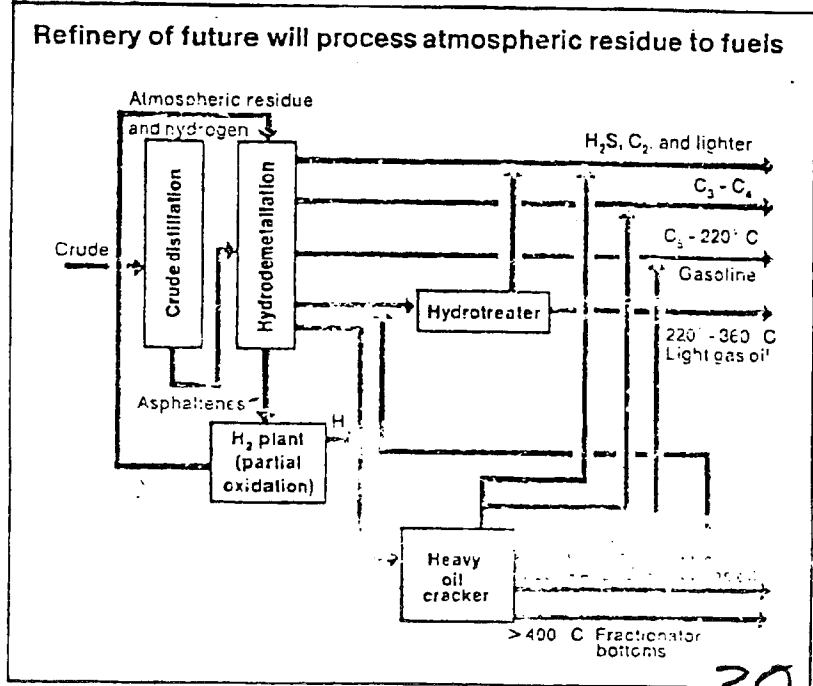
The tendency to depict the refinery of the future persists, but the objectives have changed.

For example, James R. Murphy, manager of process technology for Pullman Kellogg, addressing Petrotech-80 in Amsterdam late last month, noted that petroleum refiners in the future will be processing heavier, more viscous crudes containing more contaminants. Some evolutionary changes in refinery configuration will be required, he says, but

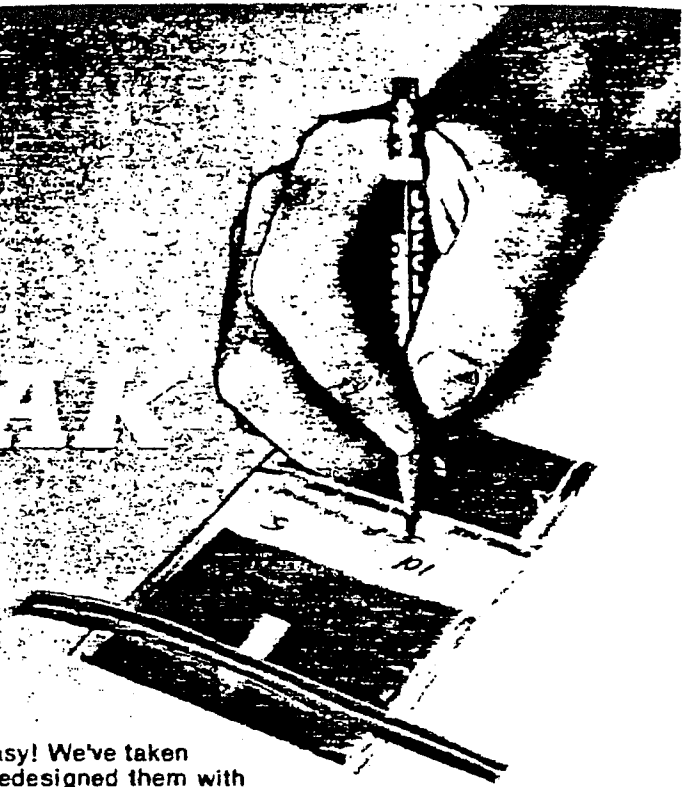
there may be some minor revolutionary changes as well.

The high cost of crude oil, Murphy says, will require that a minimum amount of crude be processed for a given product output. That could pose some stringent technical requirements for designers. Future product demand will be almost entirely for transportation fuels with a minimum production of petrochemical feedstocks. That's the exact opposite of the usual assumptions a decade ago. There certainly will be no by-products with a market value less than that of the parent crude oil.

Residual fuel production will be discontinued altogether, he says. Future refineries will have considerable hydrogenation and desulfurization capacity, but the hydrogen to feed it no longer will come from steam reforming of naphtha or light hydrocarbons. Instead it will come from residual asphaltenes or pitch.



# NEW WRITE-ON WHIRL-PAK BAGS from Nasco

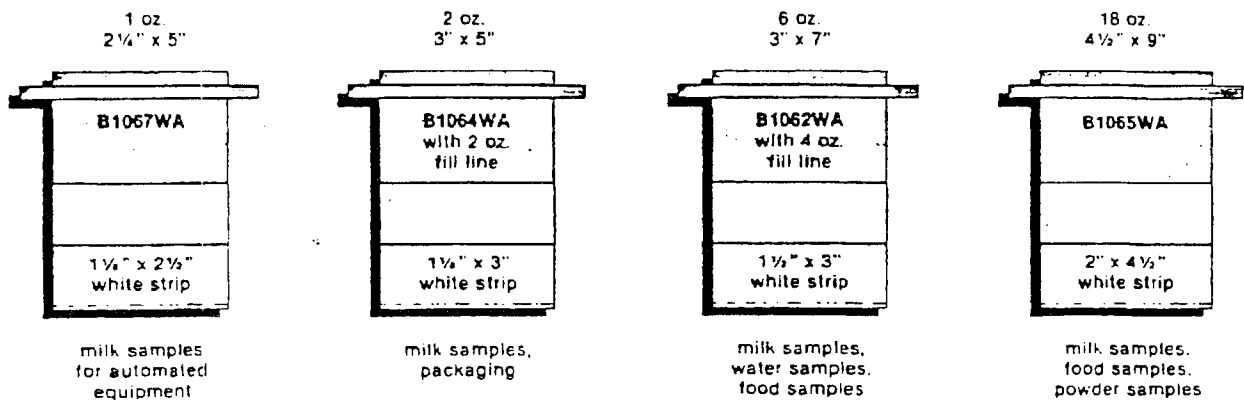


Write-On Whirl-Pak bags make sample identification easy! We've taken our 1 oz., 2 oz., 6 oz., and 18 oz. Whirl-Pak bags and redesigned them with a white write-on strip for more accurate identification and added convenience.

It's easy to write on this white strip with an ordinary ball-point pen or pencil . . . eliminates the cost of special felt tip pens and labels. The ball-point pen makes writing more legible and identification easier . . . ink stays on longer and there are no labels to come off.

To assist in volume control, the top of the white strip can also be used as a fill line. On the 2 oz. bag, the top of the strip is the 2 oz. fill line; and on the 6 oz. bag, the top of the strip is the 4 oz. fill line. All fill lines are approximate.

These Whirl-Pak bags are made of heavy, transparent polyethylene, and are ideal for milk, water, and food sampling. Whirl-Pak bags are sterilized, easy to store, disposable, and economical.



500 per box — 10M per master on 1, 2, and 6 oz.  
6M per master on 18 oz.

31

5



BNA03472463



UNITED STATES ENVIRONMENTAL PROTECTION AGENCY

DATE **MAR 13 1981**

SUBJECT Nationwide Approval for the Use of NASCO Whirl-Pak Bags

FROM Victor J. Kimm, Deputy Assistant Administrator  
Office of Drinking Water (WH-550)

TO All Regional Administrators

Listed below is an alternate method of collecting potable water samples using a product which I have approved for nationwide use for "National Interim Primary Drinking Water Regulation" (NIPDWR) compliance monitoring, total coliform bacteria only.

Data provided to and statistically analyzed by the Environmental Monitoring and Support Laboratory (EMSL) in Cincinnati have shown that the product in question, when used in accordance with the manufacturer's instructions, will meet the container specifications contained in Standard Methods.

Measurement: Total Coliform Bacteria

Step: Sample Collection

Product:<sup>1</sup>NASCO Whirl-Pak Sterilized Water Sampling Bags  
containing sodium thiosulfate

---

<sup>1</sup>This product is available from NASCO; 901 Janesville Avenue;  
Fort Atkinson, Wisconsin; 53538

cc: Regional Water Supply Representatives  
Robert L. Booth, Acting Director, EMSL

32



BNA03472464

628.54  
M4  
C.1

R-06235.

# THE HANDBOOK OF HAZARDOUS WASTE MANAGEMENT

by  
Amir A. Metry, Ph.D., P.E.

 **TECHNOMIC**<sup>®</sup> publication  
TECHNOMIC Publishing Co., Inc.  
265 Post Road West, Westport, CT 06880

ROCKETDYNE PROPERTY

33



BNA03472465

**RCRA Consulting Services  
for Hazardous Waste  
Management Facilities**

*FROM :*  
NORMA S. FUJIKAWA  
Manager  
SSFL Analytical Chemistry

**Ground Water Monitoring**

**Ground Water Protection**

**Closure and Post-Closure Plans**

Dames & Moore provides a broad range of consulting services designed to help clients achieve compliance with Resource Conservation and Recovery Act (RCRA) regulations. RCRA requirements for ground water monitoring and closure and post-closure plans for hazardous waste management facilities are described in the attached brochure.

If you would like more detailed information on RCRA regulations or Dames & Moore's consulting services, we would be happy to assist you.

WEST COAST

Henry Klehn  
Dames & Moore  
1100 Glendon Avenue, Suite 1000  
Los Angeles, CA 90024  
(213) 879-9700

Dames & Moore 

34 → 39



BNA03472466

CAPITAL EQUIPMENT REQUIREMENTS  
CURRENTLY PROJECTED FOR  
PHASE II

40



BNA03472467

TABLE 4 - CAPITAL EQUIPMENT REQUIREMENTS FOR PHASE II  
(PRELIMINARY ESTIMATE)

(Provided that the decision is made for the work to be done in-house by the SSFL Analytical Chemistry Unit)

<u>INSTRUMENT</u>	<u>APPROX. COST</u> <u>\$1981</u>	<u>PURPOSE</u>
Thermal Analysis Systems	\$32,000	Examine samples for reactivity according to the Federal Register - ASTM methods.
Ion Chromatograph	\$33,000	Excellent screening instrument for examining organic and inorganic ions more quickly than classical wet chemical techniques.
Inductively Coupled Plasma Atomic Emission Attachment for the Rocketdyne-owned Atomic Absorption Spectrophotometer	\$80,000	Rapid-fire analysis instrumentation suggested by EPA but not currently required because the whole package (aa+ICP) amounts to \$130,000.
Gas Chromatograph/ Mass Spectograph Computer Data + Tape Storage Systems	\$55,000	To provide the <u>accessible</u> data base of samples, standards, profiles already established at SSFL to use for all future cases as well as provide graphical representation of information gleaned in the event that litigation requires such declaration of technical data and performance of compliance.

41



BNA03472468

These highly reactive hazardous substances are substances which:

1. Autopolymerize
2. React vigorously with air or water
3. Are unstable with respect to heat or shock
4. Are strong oxidizing agents
5. React readily to give off toxic fumes
6. Are explosive

These categories are not discrete, but overlap. For instance, some peroxides would fit four of the above categories.

All these categories (except 4) usually require an external impetus to precipitate the reaction either in the form of energy as a "shock" or the addition of an initiating agent.

One common link among highly reactive substances, and an important reason for their hazardousness, is that their reactions can cause the formation of steep temperature or pressure gradients with time. There are standard methods of testing for and measuring these effects. Differential Thermal Analysis DTA (ASTM E475) is one procedure that can be used to identify wastes which give off large amounts of heat when reacting. The procedure consists of confining the sample in a specially designed vessel equipped with a shielded thermal-couple.



628.54  
M4  
c.1

R-062358

# THE HANDBOOK OF HAZARDOUS WASTE MANAGEMENT

by  
Amir A. Metry, Ph.D., P.E.

42



BNA03472469

1981  $\approx$  \$32,000

**Thermal Analysis**

Thermal Analysis is now one of the fastest growing instrumental techniques. Thermal Analysis finds applications in Research and Development, Quality Control and Assurance, Hazard and Stability Testing, Product Testing, Process Control, Troubleshooting and Materials Characterization. Thermal Analysis is used in many diverse industries and a listing is shown below along with a typical application.

Industry	Typical Application	Industry	Typical Application
Adhesives	Curing of Adhesives	Independent Research Labs	Contract Research
Aerospace	Carbon Fiber Laminates	Inorganic Chemical	Thermal Stability
Appliances	Analyze Plastic Housings	Instruments	Printed Circuit Boards
Automotive	Characterize Polypropylene Interior Panels	Medical Devices	Coatings on Implants
Biological	Phase Transition in Lipids	Metals	Melting Points, Phase Diagrams
Building Materials	Loss of Water in Cements, Hydration Forms	Non-Ferrous Metals	Protective Coatings
Chemicals	Phase Diagrams and Stability	Office Equipment	Curing of Toner Resins
Clay Minerals	Product Control, Composition	Organic Chemicals	Melting Points, Thermal Stability
Coal	Combustion Analysis and Coal Conversion Research	Packaging	Analyze Polyethylene
Communications	ABS in Telephones	Paint	Solvent Loss, Softening Point
Computers	Stability of Plastic Components	Petroleum	Cloud Point and Pour Point
Construction	Plastic Housing and Plumbing Materials	Pharmaceutical	Purity, Stability, Phase Diagrams
Containers	Epoxy Coating on Aluminum Cans	Photographic	Characterize Polyester Film Base
Cosmetics	Melting of Waxy Substrate	Plastics	Melting Points, Glass Transitions
Dairy	Melting Characteristics of Butter	Polymers	Effect of Additives and Fillers
Displays	Temperature Stability of Liquid Crystals	Power Tools	Magnet Wire Insulation
Education	Specific Laboratory Projects	Pulp and Paper	Free and Bound Water
Elastomers	Glass Transition Temperatures	Resins	Effect of Catalysts on Cure
Electrical	Oxidative Stability of Insulation	Rubber	Glass Transition Temperature
Electronics	Epoxy, Solder, Insulation	Semiconductors	Curing of Encapsulating Materials
Fertilizers	Decomposition of Fertilizers	Steel	Stress Relief
Films	Melting of Polyester Films	Sporting Equipment	Reliability of Nylon Tennis Strings
Food	Solid Fat Index of Fats	Textiles	Effect of Flame Retardants
Glass	Softening Point	Tires	Sulfur Cross-Linking of Rubber
		Waxes	Melting Profiles, Crystallinity
		Wire and Cable	Cross-Linking of Insulation

**Why you should want to know more about Thermal Analysis.**

Thermal Analysis is one of the fastest growing instrumental techniques. Thermal Analysis is used in many industries including pharmaceutical, plastics, fertilizer, food, electrical and electronics, automotive, aerospace, packaging, metals, and energy, and in universities and research institutes. It is used on virtually every type of material including plastics and rubber, metals, glass and ceramics, organic and inorganic materials, and has been found invaluable for research and development and quality control.

Find out more today. Contact your Perkin-Elmer Thermal Analysis representative.

43



BNA03472470

1981 ~~\$~~  $\approx$  ~~\$~~ 33,000

**DIONEX**

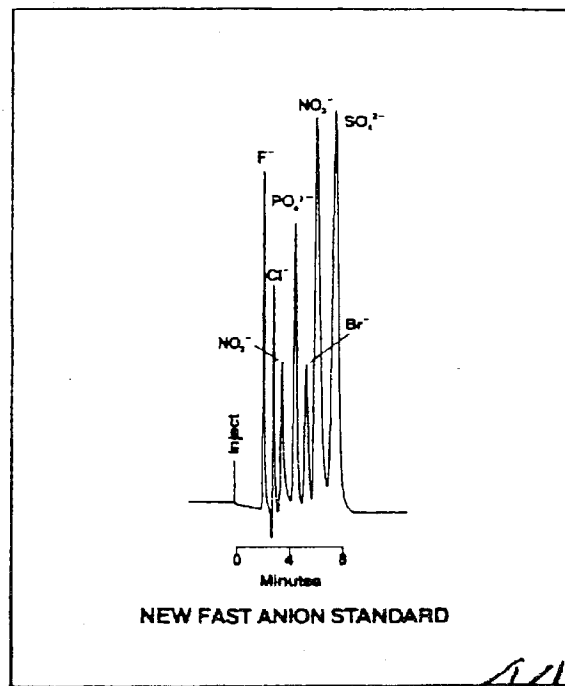
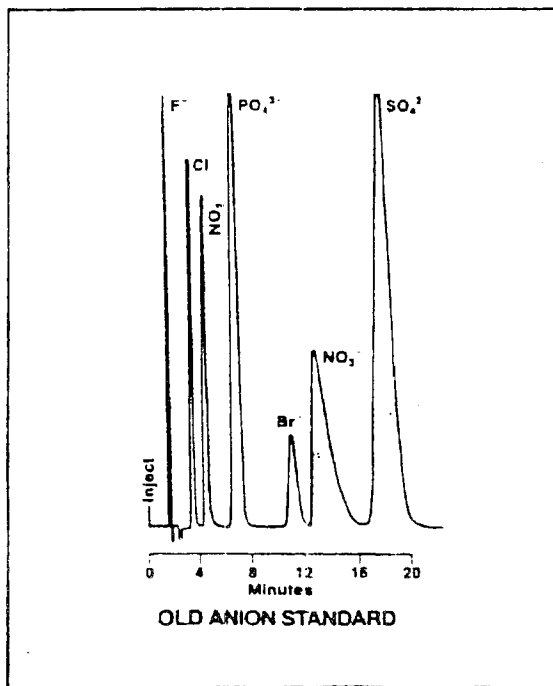
(ION CHROMATOGRAPH)

**NEW  
FAST RUN ANION COLUMNS  
CUT STANDARD ANALYSIS TIMES IN HALF**

**Results**

- **Higher Sample Throughput and Lower Cost Per Sample**  
analyze 44 samples per channel per 8-hour day — as many as 400 individual anion determinations
- **Sensitivity is Increased Up To A Factor Of Three For  $\text{SO}_4$  and  $\text{NO}_3$** ,  
less sample is required per injection
- **Improved Selectivity**  
e.g., sulfate and oxalate can be separated using a single column in 8 minutes

Some typical chromatograms follow:



BNA03472471



FROM  
MARTY ROBERTSON

## Combining AA and ICP

①

IN RECENT YEARS there has been growing interest in inductively coupled plasma (ICP) atomic emission. Because ICP and atomic absorption spectroscopy (AAS) are complementary techniques, it was felt that a thorough examination of both techniques and their relationship to each other would prove useful. Such a study would have two purposes: to compare the advantages and disadvantages of each technique and to determine the feasibility of combining ICP and AAS in a single instrument. The results of this study and the development of an instrument for performing AAS and ICP are reported here.

### *Comparison of AAS and ICP*

Because many papers have been written on both AAS and ICP and excellent review papers are available on ICP emission,<sup>1-3</sup> this report will not go into the fundamental details of what a plasma is or how it works. Instead, it will examine closely the relationships between the two techniques and how they can be used to complement each other.

Atomic absorption is the older of the two techniques, dating back to 1955 when Sir Alan Walsh first reported on AAS as an analytical tool.<sup>4</sup> A consider-

able amount of material written since then has made AAS extremely well documented and easy to use on a routine basis. Detailed methodology exists for most kinds of applications. The development and growth of ICP emission have occurred more recently. The information available, particularly in terms of applications, is less comprehensive, but is increasing as more laboratories acquire ICPs. The review articles mentioned earlier include references to a large number of papers dealing with ICP emission and applications.

The greatest analytical capability of ICP emission is that refractory elements such as boron, phosphorus, tungsten, zirconium, niobium, and uranium are determined very easily. These elements can be determined by AAS only at high concentration levels. Even the development of the graphite furnace has not eliminated or changed this problem significantly. For most elements the detection limits for the ICP are somewhat better than for flame AA, but not nearly as good as for graphite furnace AA.

Because of the extremely high temperatures and long residence times associated with the plasma, ICP emission is noted for its lack of matrix interferences, known as chemical interferences in AAS. A classic illustration is the depression of a calcium signal by aluminum or phosphate in flame AAS. In ICP emission this depressive effect is not noticed until the con-

centrations of the interfering species are much higher. The interferences that are observed may actually be due to physical effects such as viscosity rather than to chemical effects. Another common flame AA interference is caused by ionization of easily ionized species such as the alkali metals. With ICP emission the degree of ionization is controlled, and ionization interferences do not appear to be a problem. With AAS, these interferences have been identified and in general they are very easy to control. The main advantage of ICP emission in this regard is that no special sample preparation is required to control chemical and ionization interferences.

Until recently most ICPs have been designed to perform simultaneous multielement analyses—as many as 60 elements simultaneously. For applications in which a large number of elements are to be determined in each sample, this is by far the quickest way to run samples. Because the plasma itself is an optically thin emission source, the linear working range associated with ICPs is around four to six orders of magnitude, which means that the determination of trace to major constituents can be performed simultaneously with the same sample preparation and dilution. For laboratories in which the same types of samples are always run, a system such as this can be useful.

However, for many laborator-

45



2

Why buy new laboratory glassware, porcelain or plastic  
 You can clean your old ones with

- RBS-35 Liquid Glassware
- RBS-pf (ampholyte form) Liquid Glassware
- RBS-Solid for Laboratory Porcelain and Glass

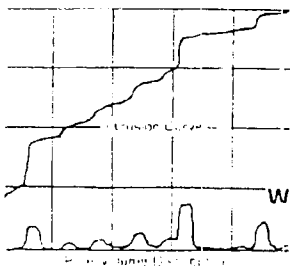
RBS is a proven cleaning agent and removes - Polymer Resins - Organic Materials - Silicone - Greases - Oils - Traces of Radio-Isotopes - Apiezon® Oils and Greases - Partially Carbonized Food Residues - Blood - Tars - Tenacious Precipitates - Cedar Wood Oil - Canada Balsam.

RBS is harmless to skin and clothing, is biodegradable, has no odor and is economical to use.

Test it yourself and you will be surprised at the excellent results!

Circle Reader Service Card No. 134

## SCANNING POROSIMETER\*



THE MOST ADVANCED  
 POROSIMETER EVER  
 DEVELOPED PROVIDES  
 INFINITE RESOLUTION!

WE CHALLENGE ANY "CONNECT THE DOT"  
 POROSIMETER TO MATCH  
 SCANNING POROSIMETER CURVES!

- Pore size distribution measurements 0-60,000 PSI including full intrusion/extrusion curves in 5 minutes plotted on an XY Recorder. Continuous data on both axes rather than a series of points.
- Pore volumes measured vs. pressure or directly vs. pore radius.
- No mercury compressibility or blank correction required.
- No oil/mercury mixtures to clean up.
- No tools required. All pressure seals made with two fingers.
- Microprocessor data reduction for plots of volume and area distribution functions, % volume, surface area and slope.

Don't Make A Mistake—Before You Buy A Porosimeter See Ours—Compare!



**QUANTACHROME**  
 CORPORATION POWDER INSTRUMENTATION  
 Six Aerial Way, Syosset, NY 11791 • 516-935-2240  
\*Patented Telex: 422620

Circle Reader Service Card No. 92

ies new and different sample types must be run. Using a direct reading spectrometer, the analyst is limited to running elements and sample types that were identified at the time of purchase. A need has arisen for instruments that use the ICP as a source but have a scanning monochromator rather than a polychromator. Both Fassel<sup>1</sup> and Boumans<sup>2</sup> have recognized the need for and place of sequential ICPs. A direct-reading spectrometer is inflexible not only in terms of the elements it can determine but also the wavelength it uses for each element. The best emission line for boron in water is not the best one for boron in steel because of spectral interferences from iron. This is true for many other elements as well.

The problem of spectral interferences is one that generally has been ignored by most ICP users. However, several common spectral interferences have been identified.<sup>3</sup> Two are shown in *Figure 1*. This does not present a problem with a sequential ICP because other wavelengths, either ionic or atomic in nature, can be used. Atomic absorption spectroscopy, however, is relatively free of spectral interferences because the emission source is either the element of interest plus a fill gas or, at most, several elements, when multielement lamps are used. Therefore, it is easy to isolate a given resonance peak and perform quantitative analysis free from possible spectral interferences. Atomic absorption has always had the advantage of specificity.

An additional advantage of AAS has been the relatively low cost of the instrumentation in comparison to the costs of ICPs with multichannel capabilities; many laboratories unable to afford ICPs turned to AAS. If the number of elements to be deter-

46



BNA03472473

3

background correction measurements being made at different intervals on each side of the peak to determine baseline position accurately.

#### ICP 5000 system

It is apparent that one instrument may be used for both AAS and ICP emission, if the AA meets certain specifications. The basic components of an AA essentially are the same as those required for emission. The only difference is that AAS requires a light source and emission does not. Most AAs have the capacity to perform AA and flame emission. However, when an ICP is used as an emission source, some of the optical requirements are changed. For this reason, not all AAs can be used for AAS and ICP.

To perform the tests comparing AAS and ICP, an interface was built to transfer light from the ICP to a model 5000 spectrophotometer (Perkin-Elmer). The 5000 was designed to incorporate the features required for ICP emission. It has a high-dispersion monochromator with a reciprocal linear dispersion of 0.65 nm/mm in the first order and a resolution of  $\sim 0.03$  nm. With ICP it is important to have good resolution because of the large number of emission lines present. The fact that an ICP is such a good source creates problems in terms of being able to resolve the analytically useful emission lines from the other lines.

The instrument grating is driven by a digital stepper motor controlled by the built-in microcomputer. To perform ICP work satisfactorily it is important to have the control and accuracy that only a computer and digital stepper motor can provide. Because there are so many emission lines present with a typical

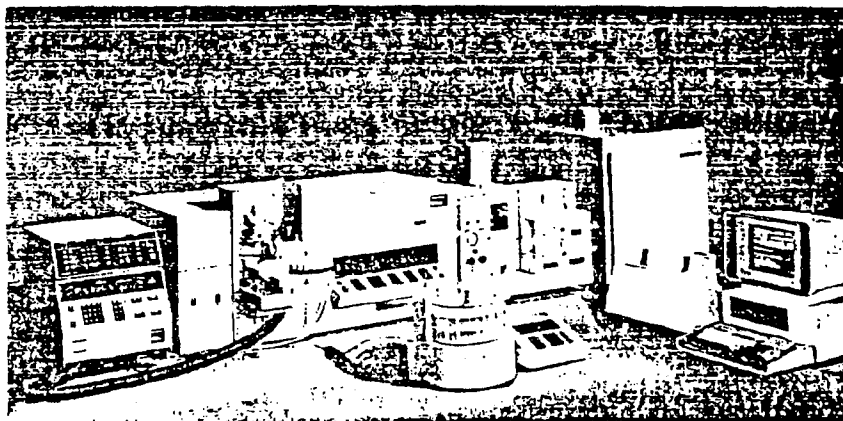


Figure 3 The ICP system, including the torch assembly and power supply, autosamplers, and data system.

sample, the wavelength setting must be very accurate in order to find the correct peak. This is true for any sequential ICP if it is to be operated in an automatic mode.

Stray light and the problems associated with it have been discussed in detail by Larsen et al.<sup>9</sup> A major source of stray light, known as Rowland ghost, is the imperfection is a ruled grating caused by periodic errors in grating groove spacing. These errors are a result of mechanical imperfections in the ruling engine used to make the master gratings. These imperfections and the Rowland ghost can be eliminated by using holographically recorded gratings. Holographic gratings are produced by using an interference phenomenon impinged on a glass plate with an optically flat surface coated with a photosensitive material. Gratings produced in this manner are free of periodic errors in groove spacing and also exhibit low levels of total scattered light.

To maintain optical efficiency for optimum AA performance, the holographic grating is blazed at 210 nm and designed for use

between 175 and 465 nm. In this wavelength region the optical efficiency is very close to that of a conventionally ruled grating blazed at 210 nm. Above 465 nm a ruled grating blazed at 580 nm is used to provide optimum performance in the visible region. Because very few elements are determined above 465 nm and stray light is not a significant problem, a holographic grating is not required.

For easy switchover from AA to ICP, the system (Figure 3) was designed with the ICP permanently mounted on one end. The graphite furnace or burner for flame AA is mounted in the normal position for AA. Changeover from AA to ICP is achieved by turning a knob. An optical interface to transfer emission from the ICP to the monochromator was installed between the ICP and the 5000. The viewing height of the plasma is controlled at the interface. With this particular torch and configuration the most common viewing height is approximately 15 mm above the coil, but this can be adjusted as needed.

The instrument is capable of having the entire optical path

A9



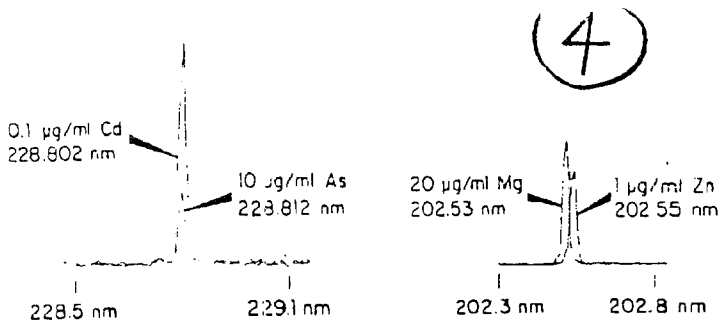


Figure 1 Two examples of spectral interferences with ICP: a) The direct line coincidence of cadmium at 228.802 nm and arsenic at 228.812 nm, and b) a near spectral overlap of magnesium at 202.53 nm and zinc at 202.55 nm.

mined in each sample is small, AAS is not only less expensive but faster.

Some analytical problems also can be solved more readily with AAS than with ICP. If high precision (CV < 0.3%) is desired for an analysis, flame AAS is the method of choice. Although significant improvements have been made in sample introduction with ICPs, precision still remains poorer than with flame AAS (CV of 0.5 to 1.0% for ICP). As further progress is made in understanding the fundamentals of sample introduction and atomization processes with ICPs, this precision difference may become progressively smaller.

One of the biggest advantages of AAS is its ability to use other types of atomization sources, such as graphite furnaces and mercury/hydride systems. Both alternate sources have greatly lowered detection limits for elements that can be determined with them. With the graphite furnace, detection limits are as much as two orders of magnitude lower than with ICP emission. In addition, microliters of sample are used as opposed to the 1-2 milliliters normally used with an ICP. If desired, in some situations solid samples can be run directly in the graphite furnace.

In environmental chemistry there is a great deal of interest in determining mercury, arsenic, and selenium. These elements are best determined by using a mercury/hydride generator with an AA. The capability of AAS to be used with these alternate atomization systems gives it a flexibility not yet completely realized by ICP. Although hydride

generation has been applied to the ICP,<sup>1</sup> significant problems are caused by background shifts as hydrogen-containing gases pass through the plasma.

Background emission due to stray light is another problem in ICP instruments. The stray light can be caused by grating imperfections or by poor spectrometer design. In early polychromator systems, the problem of dealing with this background had been severe. Many systems now have an accessory to perform background correction, but this may limit their flexibility for dealing with different elements and samples. Properly designed sequential ICPs, however, have the capability to measure background on one or both sides of the peak at varying intervals, a versatile means of background correction. Stray light has been reduced in some instruments by a factor of 3-10, depending on conditions, with the use of holographic gratings. Figure 2 shows

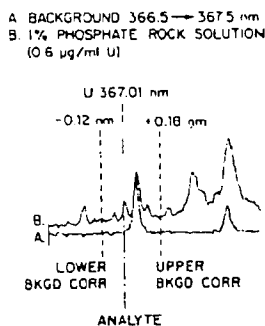


Figure 2 An example of uranium determination in phosphate rock. The background is measured at 0.12 nm below the analyte peak and 0.18 nm above.

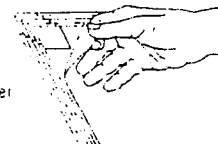
## Stop contamination in its tracks...

outside the clean room.

Micro-Clean Adhesive Mats step up your efforts to control particulate counts in critical industrial areas. Placed at the entrance of labs, their ultrafine-particle backing traps 99.99% of the sensitive clean room contaminants. Micro-Clean Adhesive Mats prevent dirt that would otherwise be tracked in by shoes and wheeled equipment. In fact, recent studies have proven Micro-Clean up to 45% effective in reducing general contamination.

Micro-Clean does it with a specially formulated adhesive which is bonded to a tough, thin plastic film. Its smooth, continuous surface assures total contact and efficient removal of particulate matter. Each mat is just 1/8" thick and consists of 20 adhesive-coated sheets. Planted in a heavy-duty frame, which can be a trip hazard and dirt trap. To install, simply remove backing and press into place on any clean, smooth floor surface.

When top layer becomes contaminated, simply grasp convenient corner tab, peel off and discard.



Request your Micro-Clean sample and adhesive mats today.

Name \_\_\_\_\_

Title \_\_\_\_\_

Company \_\_\_\_\_

Address \_\_\_\_\_

City \_\_\_\_\_ State \_\_\_\_\_

Distributor nearest to me \_\_\_\_\_ AL0380

### Micro-Clean Adhesive Mats

a product of

Micro-Clean Corporation, 680 Wilshire Road, Pain Spring, CA 90262

Circle Reader Service Card No. 86

AMERICAN LABORATORY 119

48



BNA03472475

ICP/5000  
METALLURGICAL ANALYSIS

5

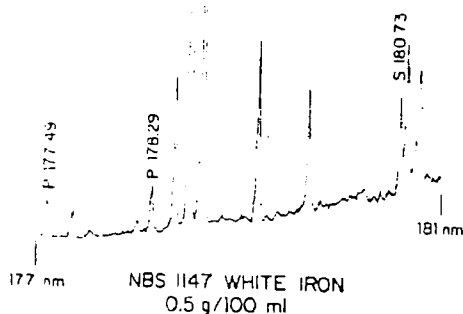


Figure 4 Spectrum of phosphorus and sulfur in an iron matrix. The spectral region shown is 177 to 181 nm.

purged with an inert gas such as argon or nitrogen, thus extending the working range of the instrument down to 175 nm. For sulfur, the most sensitive analytical lines, 180.73 nm and 182.04 nm, occur in the vacuum ultraviolet. The detection limit for sulfur at 180.73 nm is a factor of ~100 better than it is at 190.03 nm, the most sensitive wavelength outside the vacuum uv. For other elements, such as phosphorus and boron, the vacuum uv provides a wavelength region with few spectral interferences, particularly when iron is in the matrix being analyzed. Figure 4 shows a spectrum of phosphorus and sulfur in an iron matrix between 177 and 181 nm. Nitrogen was used as the purge gas.

For maximization of the system's capabilities a computer is needed for control and to collect the data. In this case a dedicated microcomputer with full ASCII keyboard and a CRT display is used. The computer has 64K of memory with dual floppy disk drive. The disks are used to store instrument operating parameters and the basic system software. In addition, the computer is programmable in BASIC for use as a laboratory computer. All

parameters for the 5000 during ICP operation are controlled by the computer. Because the operator is prompted by the computer, prior computer training is unnecessary.

#### Software

Software has been developed that controls all instrument parameters, peak finding, quantitation of results, and statistical analysis of the ICP/5000. The software has two operating modes, one for single-element and one for multielement analyses. Because the multielement mode is made up of a series of single element programs, the single-element program will be discussed first.

When the operator chooses the single-element mode by pressing the appropriate function key a form appears on the CRT. To set up the instrument to run the element of interest, the operator completes the form that appears on the screen by entering data through the keyboard. Once the form has been completed, the information, along with the file name and remarks, can be transferred to a library disk for long-term storage. The process of storing parameters or recalling them

is performed by pressing one of the labeled function keys above the keyboard. All commonly-used commands have a function key so that operators need not memorize them.

Once the program has been established and stored, the operator depresses the RUN MANUAL or RUN AUTO function key, depending on whether the analysis will be performed manually or in conjunction with the AS-50 autosampler. After the RUN MANUAL key is depressed, the operator is given the opportunity to retain an existing wavelength calibration. The operator then is asked to aspirate the first standard and press READ. When this step is completed the next instruction is to aspirate the blank and press READ. This same sequence continues for up to four more standards and for each sample to be analyzed. When the RUN AUTO mode is being used, the format is the same except that the CRT displays instructions for setting up the AS-50 autosampler. After it is set up, READ is pressed, and the data system assumes control.

If a multielement program is desired, it is first necessary to fill in a single-element parameter form for each element to be determined. The multielement program is designed so that up to 20 elements can be determined. After all single-element conditions have been entered along with a method file name, the entire program can be stored on a floppy disk. Once the conditions and parameters have been established, the analysis proceeds in the same way as the single-element analysis with the exception that each element is determined sequentially starting with the lowest wavelength and going in order to the highest.

Finally, the capability to perform background correction at varying intervals on one or both

49



6

sides of the analyte peak is an integral part of the software for the ICP/5000. The importance of being able to vary the intervals at which the background is measured has been shown.<sup>10</sup> An example of a situation in which this would arise is shown in Figure 2.

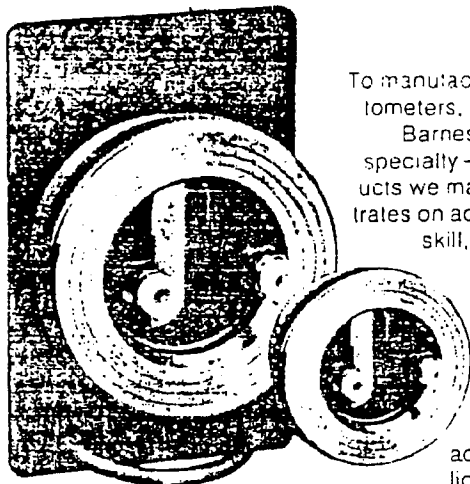
### Conclusion

The authors' aim was to show the complementary nature of ICP emission and atomic absorption. The data demonstrated that both techniques have a place in the analytical laboratory and should be used in conjunction with each other. A second goal was to determine if an ICP could be successfully interfaced to an AA. This was proved feasible with an instrument that can be operated at optimal conditions for either technique.

### References

1. FASSEL, V.A., *Science* 202, 183 (1978).
2. GREENFIELD, S., MC BEACHIN, H.M., and SMITH, P.B., *Talanta* 23, 1 (1976).
3. BOUMANS, P.W.J.M. and DE BOER, F.J., *Proc. Anal. Div. Chem. Soc.* 12, 140 (1975).
4. WALSH, A., *Spectrochim. Acta* 7, 108 (1955).
5. FASSEL, V.A., *Anal. Chem.* 51 (13), 1290A (1979).
6. BOUMANS, P.W.J.M., *Analyst* 101, 585 (1975).
7. EDIGER, R.D. and FERNANDEZ, F.J., paper presented at Federation of Analytical Chemistry and Spectroscopy Society Meeting, 1979.
8. WARD, A.F., CARARRA, L.A., and MARCIELLO, L.F., paper presented at Federation of Analytical Chemistry and Spectroscopy Society Meeting, 1979.
9. LARSEN, G.F., FASSEL, V.A., WINGE, R.K., and KNISELEY, R.N., *Appl. Spectrosc.* 30 (4), 384 (1976).
10. WALLACE, G.F. and HOULT, D.W., paper presented at Federation of Analytical Chemistry and Spectroscopy Society Meeting, 1979.

## Spectrophotometers are their business. Accessories are ours.



To manufacturers of infrared spectrophotometers, accessories are a sideline. To Barnes, analytical accessories are a specialty — the only spectroscopy products we make. Because Barnes concentrates on accessories, all of our attention, skill, and experience is invested in quality and instrument compatibility at low prices. And for quick, personal service, we offer a toll-free number outside Connecticut (800) 243-3498.

Ask for the Barnes analytical accessories catalog — windows, liquid and solid sampling items,

gas cells, reflectance units, and much more. What's an afterthought for most manufacturers is Barnes' first thought.

Barnes Engineering Company, 30 Commerce Road, Stamford, Ct. 06904, (203) 348-5381.



**BARNES**

**Your IR spectroscopy source**

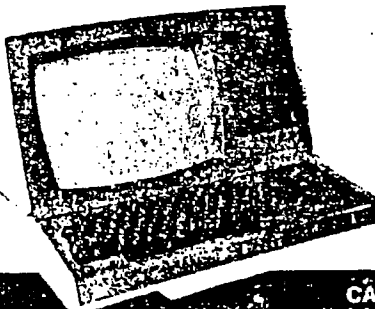
Circle Reader Service Card No. 146

**Our NEW Laboratory Computer System Doesn't Come Cheap!!!**



# Bluebird 2

## Just Costs Less!



### Standard Features:

- 32kRAM
- Dual Serial I/O
- 5 1/4" floppy disc
- Laboratory cross index filing system
- 8 user definer keys
- Microsoft (TM) Extended Disc Basic
- Two Z80 Micro Processors
- Disc Operating System
- Sharp screen image
- Rugged construction
- **\$2995.00** Complete System

\*Zenith Data System

\*\*Prices subject to change without notice

**CALL NOW! 617-272-5212**

This powerful computer was designed for today's laboratory software programs, available through Eastern Analytical Laboratory.

The Bluebird 2 is a complete all in one computer system\* offering the performance of systems costing far more than our extremely low price of \$2995.00\*\*

Service centers are available throughout the USA. Many hardware options including: Universal Interface. See our booth at the Pittsburgh Conference in Merch at Atlantic City, N.J.



**EASTERN ANALYTICAL LABORATORIES, INC.**  
One "A" Street, Burlington, MA. 01803

Circle Reader Service Card No. 21

AMERICAN LABORATORY : 123

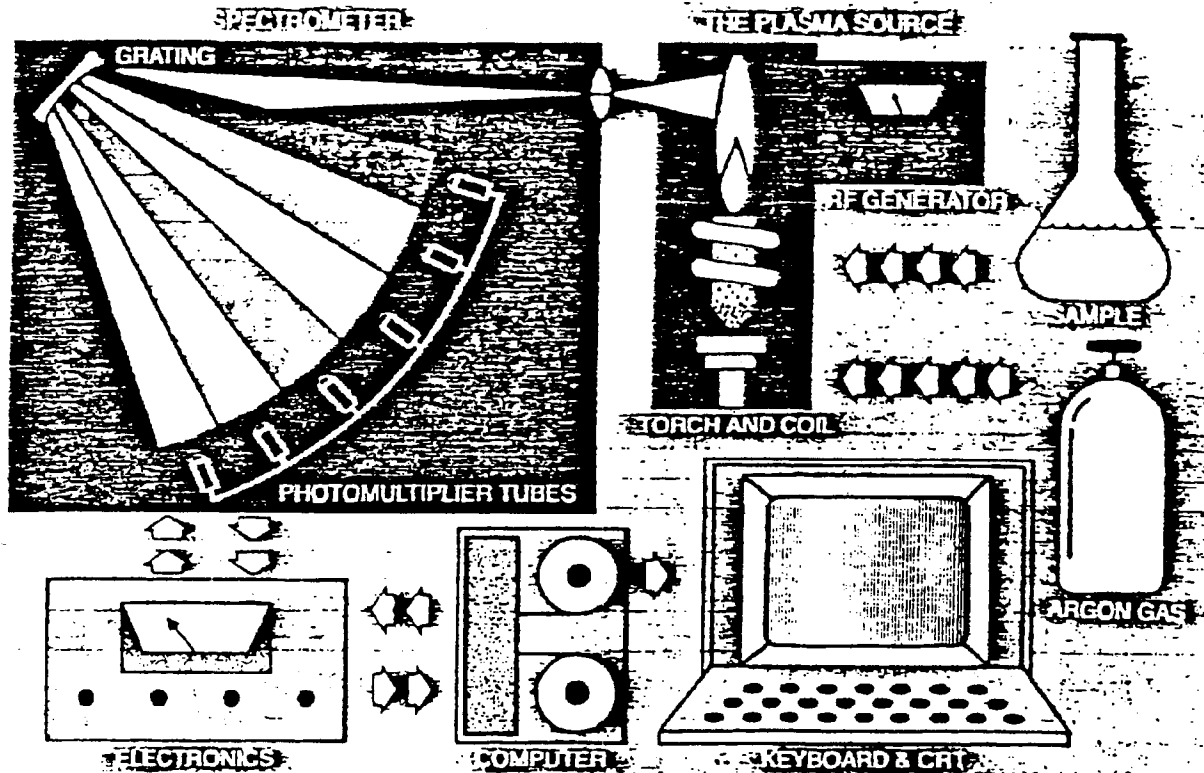
50



BNA03472477

AA ATTACHMENT = 1981 = \$80,000

# principles of operation



The JY-48P Direct Reading Plasma Elemental Analyzer is designed to perform rapid simultaneous multi-element chemical analysis on a large variety of samples. Typical examples of materials that can be analyzed by the JY-48P include water and waste water samples, oil samples (including additives and wear oils), sludges, biologicals, geologicals, metals, alloys, etc.

The general principles of operation of the JY-48P are relatively simple. Radio frequency radiation is used to heat a flow of argon gas into a plasma by means of an induction coil. When a sample is introduced into this extremely hot (5000 to

10000 K) argon plasma, the sample is broken down into individual atoms, which are then further excited by the plasma. These excited atoms then will re-emit this energy as electromagnetic radiation (light) which is characteristic of their respective chemical elements. The emitted light is then passed into the spectrometer of the JY-48P. The spectrometer disperses the light across its focal curve, separating the various emission lines present in the radiation. At appropriate positions on the focal curve are positioned photomultiplier tubes, one for each analytical line desired on the system. These convert the light energy

emitted by the atoms into electrical currents. The current from each photomultiplier tube is integrated over a period of time (on the order of seconds), and then digitized so that the data may be fed into a computer for storage and calculations. Analytical results can then be printed out on the computer terminal, or displayed on a video screen. The computer, besides collecting data and calculating results, also controls the overall functioning of the spectrometer, making the system reasonably "automatic" and removing from the system operator dependence.

51

ICP



BNA03472478

```
###      #####      #####      ### ###      ### #
#         #         # # #
#         #         #
#         #         #
#         #         #
# #       #         #
# #       #         #
#####    #####    ###
```

```
### ### ### ### ### #
# # # # # ##
# # # # #
# # # # # #####
# # # # # #
# # # # # #
# # # # # ## #
# # # # # ## ###
# # # # # # ###
```

#####

Job : 77  
Date: 8/7/2006  
Time: 3:55:06 PM



# Internal Letter



Rockwell International

Date . 21 June 1982

No . 82FE-212

TO: Name, Department, Division, Address  
· F. Feaster  
· Rocketdyne-DeSoto  
· 553, 055-CA08

FROM: Name, Department, Division, Address  
· M. A. Francis  
· Rocketdyne-DeSoto  
· 541, 055-FB12  
· 5726

Subject . Burn Pit Cleanup

It is requested that the bidding for the excavation, transportation, and disposal of the material from the burn pit be reopened. This request is being made because the original specification did not classify the material to be removed as "non-hazardous". This point may not have been clear to the bidders.

Attached is the revised specification for the work to be performed, blueprint of the burn pit, a discussion paper describing the soil sampling results, and letters from the California Department of Health Services and the Regional Water Quality Control Board.

Please include all of these documents as a part of the specification.

M. A. Francis  
Environmental Control Specialist  
Facilities Engineering

MAF:lh

Attachments - As Noted

APPROVED:

J. A. Bowman, Manager  
Facilities Engineering

cc w/o attachments:

W. J. Costas            540, 055-FB68  
S. Gardner            553, 055-CA08  
R. D. Schmued        541, 055-FB12



BNA03136096

Services To Be Performed:

1. Provide labor and equipment to excavate 2,000 tons (approximately 1,500 cubic yards) of non-hazardous soil, hardware, and burnt out propellant containers from the SSFL Burn Pit area. The actual tonnage removed + the 2,000 tons will be adjusted and reflected in the costs. The accounting of the tons of waste removed and disposed will be based on certified weight documents from the disposal facility.

The hardware, containers, and soil have been selectively sampled and analyzed. From the results of these analyses, it has been determined by the California Department of Health Services and the California Regional Water Quality Control Board that the material is non-hazardous. (Letters from above-mentioned agencies and lab results are enclosed.)

2. The area to be excavated is identified as "Buried Debris Area" and "Sediment Area" on the enclosed drawing labeled Plate 1. These areas are to be excavated to a depth of 4 feet from the existing surface.
3. All soil and debris excavated shall be transported in compliance with the Department of Transportation regulations by a registered hauler.
4. All soil and debris excavated shall be disposed of in a Class I landfill. This requirement is per the RWQCB.



BNA03136097



Rocketdyne Division  
6633 Canoga Avenue  
Canoga Park, California 91304

Rockwell  
International

Telex: 698478

22 April 1982

In reply refer to 82RC04548

Regional Water Quality Control Board  
107 S. Broadway  
Suite 4027  
Los Angeles, CA 90012

Attention: Mr. H. Yacoub

Gentlemen:

The soil samples taken at Rocketdyne's "Burn-Pit" located at the Santa Susana Field Lab have been analyzed, and the analyses are herewith being submitted to you for your review and evaluation. Samples were taken in two sets. The first set of eleven samples were taken on October 15, 1981. These were analyzed according to EPA methods. The sampling locations were selected on the basis of disposals, which consisted primarily of the combustion of the chemicals and the burial of residue and containers, in some instances.

The second sampling was performed on February 5, 1982 after a radar scan had been performed to identify locations of buried materials. A 40 ft. long and three foot deep trench was cut in the area, which was expected to represent the highest potential for contamination. The sides of this trench were sampled extensively (8 samples) in areas which showed physical evidence of contamination or odors. The second set as well as one split sample of the earlier set were analyzed according to the procedures outlined by the State Department of Health Services' California Assessment Manual.

The sampling results bear out Rocketdyne's belief that any contamination which may have occurred as a result of its disposal activities is very minimal. Sampling has been performed at the sites where contamination was expected to be at its worst, yet only isolated instances of marginally hazardous materials or concentrations have been found. Rocketdyne will remove 1400 cubic feet of the slightly contaminated soil as indicated on the plan of the Burn Pit site. It is requested that the Regional Water Quality Control Board and the State Department of Health Services approve the disposal of this soil at a Class 1 site as a non-hazardous waste. It is our belief that waste constituents which are now generally at or near limits of detection will be completely undetectable when mixed more homogeneously within the soil and spread at the landfill.



BNA03134552

Regional Water Quality Control Board  
Attention: Mr. H. Yacoub  
22 April 1982  
Page 2

For further information please telephone Mr. M. A. Francis, (213) 700-5726  
or Mr. R. D. Schmued, (213) 700-5814.

Very truly yours,

ROCKWELL INTERNATIONAL  
Rocketdyne Division



J. A. Bowman, Manager  
Facilities Engineering

JAB:ekv

Enclosure : Chemical analyses of contaminated soil samples



BNA03134553

# GROUNDWATER RESOURCES CONSULTANTS, INC.

CONSULTING HYDROGEOLOGISTS • ENVIRONMENTAL SPECIALISTS

1735 EAST PORT LOWELL ROAD,  
SUITE 4  
TUCSON, ARIZONA 85719  
PHONE: (602) 326-1898

CHUCK M. DICKENS, P.G.  
DAVID B. HAWKINS, P.G.  
SHELDON D. CLARK  
KURT J. BLUST, P.G.  
DINAH H. JASENSKY

**GROUNDWATER RESOURCES CONSULTANTS, INC.**

**FACSIMILE TRANSMISSION**

DATE: June 3, 1992

TO: Dean Crippen / 1 Rocketdyne  
(PERSON) (COMPANY)

FROM: Dawn Garcia

Number of pages, including this page: 3

IF YOU DO NOT RECEIVE ALL PAGES, CALL:

(602) 326-1898

COMMENTS: In response to your questions on the Area I Thermal Treatment Unit:

① The reference on page 9 regarding disposal of 1400 cubic feet of soil came from a Rocketdyne letter (copy attached). It's possible that the 1600 cubic yards of soil were segregated and only 1400 cubic feet required class I disposal. However, I don't know how to resolve the discrepancy.

② The reference on page 4 regarding the removal time came from a telephone conversation with you on December 5, 1991. The understanding at the time was that the features shown on the 1981 map were primarily removed in 1989 & maybe some in 1982.

PROJECT NO.: 8640

OUR FAX NO.: (602) 325-0171

*I hope that this info helps!*

• WATER SUPPLY DEVELOPMENT • GROUNDWATER CONTAMINATION INVESTIGATIONS •



BNA03134554

To: NORMA FUJIKAWA  
From: MICHAEL FRANCIS  
Subject: BURN PIT Disposal Inventory

RECEIVED  
7/28/80  
\*

Enclosed is a copy of the disposal inventory  
in which I prepared. I would appreciate your  
review of the list and comments on possible  
troublesome residues.

Thank you

M.A. FRANCIS

ENVIRONMENTAL CONTROL ENGINEER

# BURN PIT

\* INFORMED MICHAEL THAT I WOULD  
HAVE TO HAVE FUNDING APPROVED  
FIRST.



BNA00377083

BURD B. DIGITAL INVENTORY

YEAR	MATERIAL	QUANTITY	SOURCE	DISPOSAL METHOD
1961	ACETONE	110 gal	SCIENT	BURN
		110 gal	B LAB	
1961	AMMONIA	205 gal	PHOTO	DILUTION
1961	BORON FUEL	110 gal	CANOGA	BURN
1961	BORON TRIFLUORIDE	240 ft <sup>3</sup>	A I	DESTRUCTION
		5 lbs	A LAB	
1961	CARBON TETRACHLORIDE	110 gal	B LAB	BURN
1961	CESIUM	2 lbs	CANOGA	BURN
1961	DECON. SOLN.	110 gal	CANOGA	DESTRUCTION
1961	DITTO FLUID	110 gal	CANOGA	BURN
1961	ETHYLENE DIAMINE	55 gal	SPA	BURN
1961	FLUSHING OIL	385 gal	CANOGA	BURN
1961	GASOLINE	110 gal	CTL 3	BURN
1961	GEAR OIL	165 gal	DRUM STORAGE	BURN
1961	HEPTANE	500 gal	QUIK MIX	BURN
1961	HEXANES	1045 gal	CANOGA	BURN
		55 gal	DRUM STORAGE	
		55 gal	B LAB	
	TOTAL	1155 gal		
1961	HYDRAULIC OIL	55 gal	CTL 4	BURN
1961	HYDRAZINE	6845 gal	CANOGA	BURN
		55 gal	DELTA	
		55 gal	CTL 3	
	TOTAL	6955 gal		
1961	Isopropyl Alcohol	110 gal	CANOGA	BURN
1961	LACQUER Dilute	55 gal	DRUM STORAGE	BURN
1961	LITHIUM CHLORIDE	825 gal	CANOGA	DISSIPATION IN H <sub>2</sub> O
1961	MAGNESIUM	820 gal	SPA	BURN
1961	METHYL ALCOHOL	110 gal	B LAB	BURN
1961	MISC. FLAMABLES	21865 gal	CANOGA	BURN
1961	MISC. LAB CHEMICALS	200 gal	CANOGASHEM	BURN
1961	MIXED OXIDES	300 lbs	SP	BURN
		300 lbs	SP	
	TOTAL	600 lbs		
1961	MYDYNE	500 gal	SPA	BURN
		420 gal	SP	
	TOTAL	5620 gal		



BNA00377084

5

Rockwell International Corporation  
Rocketdyne Division

Santa Susana Field Laboratory  
Ventura County, California

Area I Thermal Treatment Facility  
CAD 093 365 435

Revised Closure Plan

2 January 1992



BNA01368701



## Table of Contents

- 1.0 INTRODUCTION
- 2.0 SITE DESCRIPTION
  - 2.1 DESCRIPTION AND HISTORY OF FACILITY
  - 2.2 GEOLOGY
    - 2.2.1 RELATIONSHIP OF FACILITY TO THE 100-YEAR FLOODPLAIN
  - 2.3 HYDROGEOLOGY
    - 2.3.1 SURFACE WATER
    - 2.3.2 GROUND WATER
  - 2.4 METEOROLGY
  - 2.5 PREVIOUS INVESTIGATION AND REMEDIATION
  - 2.6 QUANTITIES OF HAZARDOUS WASTE TREATED AT THE FACILITY
  - 2.7 PRE TREATMENT WASTE HANDLING
  - 2.8 HAZARDOUS WASTE CHARACTERISTICS
    - 2.8.1 PROPELLENTS
    - 2.8.2 PYROPHROIC WASTE
    - 2.8.3 COMPRESSED GAS CYLINDERS
  - 2.9 TREATMENT RESIDUE MANAGEMENT
- 3.0 CLOSURE
  - 3.1 CLOSURE PLAN ORGANIZATION
  - 3.2 CLOSURE REQUIREMENTS
    - 3.2.1 PERSONNEL QUALIFICATIONS
    - 3.2.2 HEALTH & SAFETY PLAN
    - 3.2.3 CLOSURE CRITERIA
  - 3.3 CLOSURE ACTIVITIES
    - 3.3.1 NOTIFICATION OF CLOSURE
    - 3.3.2 PRE-CLOSURE ACTIVITIES
    - 3.3.3 PHASE II CLOSURE ACTIVITIES
    - 3.3.4 PHASE III CLOSURE ACTIVITIES
  - 3.4 REMOVAL PROCEDURES
    - 3.4.1 HAZARDOUS WASTE REMOVAL
    - 3.4.2 NON-HAZARDOUS WASTE REMOVAL
  - 3.5 SOIL ASSESSMENT, EXCAVATION, AND CLEARANCE
  - 3.6 CLOSURE CERTIFICATION
- 4.0 COST ESTIMATES AND SCHEDULE
  - 4.1 CLOSURE COST ESTIMATE
  - 4.2 FINACIAL ASSURANCE AND LIABILITY COVERAGE
  - 4.3 CLOSURE SCHEDULE
  - 4.4 AMENDMENT OF CLOSURE PLAN
- 5.0 POST CLOSURE



BNA01368702

Attachments

I) DHS Letter regarding completion of excavation and removal of hazardous wastes, Burn Pit Area, Santa Susana Field Lab

II) VIII Operational Procedures

III) V-B Thermal Treatment Facility Ash Residue Typical Analysis Results

IV) Sampling and Analysis Plan, Area I Thermal Treatment Facility 8640-158

V) LIABILITY REQUIREMENTS

VI) CLOSURE SCHEDULE

VII) 100-year Flood Plain Map

VIII) ANNUAL SURFACE WIND ROSE - Santa Susana Field Laboratory



BNA01368703

## 1.0 INTRODUCTION

This document has been prepared in response to a letter received by Rockwell International Corporation, Rocketdyne Division on 3 September 1991 from Lester Kaufman, Chief, Permits Section, Hazardous Waste Management Division, U.S. Environmental Protection Agency. Its Purpose is to present a revised closure plan which addresses inadequacies of the closure plan submitted as part of the Part A Interim status permit application for Area I Thermal Treatment area located at the Rockwell International Corporation, Rocketdyne Division's Santa Susana Field Laboratory. The Santa Susana Field Laboratory is located in the Simi Hills, Ventura County, California. The procedures describe how the permitted facility will be closed in a manner that will protect human health and the environment.

The owner/operator of the facility is Rockwell International Corporation, Rocketdyne Division. The facility is located at the top of Woolsey Canyon Road, Simi Hills, California. The mailing address for the facility is: 6633 Canoga Avenue, Canoga Park, California, 91303

## 2.0 SITE DESCRIPTION

### 2.1 DESCRIPTION AND HISTORY OF FACILITY

The Santa Susana Field Laboratory (SSFL) is a 2700 acre complex situated at an elevation of 1850 feet in the Simi Hills on the border of Ventura County and Los Angeles County. A map noting the location of both the SSFL and the Area I Thermal Treatment Facility is given as Figure 1 of the attached Sampling and Analysis Plan. Rockwell International Incorporated, Rocketdyne Division (Rocketdyne) operates and maintains a number of rocket engine test facilities and research and development laboratories at the SSFL.

At one location at the SSFL, propellant waste is generated in small bench-scale quantities at the NAKA Research Laboratory. (The acronym NAKA stands for North American Kindleberger Atwood, a hybrid description of a laboratory derived from the previous name of Rockwell International and the founders of the laboratory.)

The NAKA Research Laboratory is located approximately nine tenths of a mile from the Thermal Treatment Facility and is not a part of the permitted unit.

Research conducted at the NAKA Research Laboratory on solid rocket and gun propellants generates waste products and cleaning materials of which the hazardous constituent is explosive, reactive or ignitable. At the Component Test Laboratory III hypergolic rocket engine ignitors were both



BNA01368704

produced and experimented with. Thus, a number of hypergolic ignitors required disposal. The Area I Thermal Treatment Facility was an area used for the small scale destruction of explosive wastes by open burning.

Open burning and open detonation was chosen as an alternative to transporting potentially dangerous wastes through the community. It was felt that the explosive, reactive and ignitable wastes generated at the research laboratories could be safely and efficiently treated at a remote location at the SSFL.

Strong oxidizer compressed gases are also utilized at the SSFL in a variety of experiments and processes ranging from laser research to rocket propellant preparation. Occasionally, a compressed gas cylinder that could no longer be safely transported on public roads would be destroyed at the Area I Thermal Treatment Facility.

The Area I Thermal Treatment Facility is located in a cleared area on the south side of the facilities active portion of SSFL. See Figure 1 of the attached Sampling and Analysis Plan. Access to the Area I Thermal Treatment Facility is along the Area I Road and to the west of the Perimeter Pond. The area consists of a mostly unpaved area of reasonably flat terrain which is routinely graded to eliminate vegetation.

The western portion of the facility has been used for demonstrations and training activities by Santa Susana Fire Protection. It is flat and mostly vegetation free. There are several tables, buckets, and stands that were used for the training and demonstration purposes.

On the eastern portion of the Area I Thermal Treatment Facility there are two bermed area, and old control center wall and several hundred square feet of asphalt.

One berm is located on the south side of the facility and is approximately 8 feet in height and is "L" shaped. Within the berm is a 19.5 feet by 20 feet concrete pad which was built concave to prevent any liquids from running off. Two pipe bollards that have been modified to hold cylinders are attached to this pad. The berm surrounds the southern and eastern sides of the pad.

The second concrete pad is 6.5 feet by 6.5 feet and is surrounded on all sides by an 8-foot high soil berm. A burn cage measuring six feet by six feet by six feet covered with thick, densely woven steel mesh is housed on this pad. A longitudinally split 55 gallon steel drum was housed within the cage. Explosive materials and paper, the compounds TEA and TEB, etc. were loaded into a the split drum and ignited. The steel cage eliminated the possibility of waste materials escaping the facility while treatment was in progress. The



BNA01368705

cage also acted to control wind dispersal of the ash residue.

#### Facility operation 1958 to 1982

The Area I Thermal Treatment Unit was intermittently operated from 1958 to 1982. To provide permitting coverage for the facility it was initially permitted as a waste pile in 1980. The area was cleaned in 1982 under Department of Health Services authority (see letter dated 3 September 1982, Attachment 1-A). The Interim Status Document was amended to include the facility as a "Thermal Treatment" facility on 15 January 1990.

#### Facility operation 1982 to 1990

The wastes handled at the facility since 1982 are EPA characteristic wastes, D001 (ignitable) and D003 (reactive). These wastes include strong oxidizers and hypergolic propellants such as chlorine pentafluoride (a.k.a "Compound A"), Tetrafluorohydrazine, and solid propellant and reactive/ignitable scraps from R&D operations including HMX, RDX, ammonium perchlorate, nitrocellulose, and nitroglycerine. Associated with these wastes were limited quantities of solvents and kerosine used in the clean up and safe storage of the explosives.

## 2.2 GEOLOGY

Refer to the attached Sampling and Analysis Plan for a description of the geologic and hydrologic conditions.

### 2.2.1 RELATIONSHIP OF THE FACILITY TO THE 100-YEAR FLOODPLAIN

#### A. Floodplain Location

The Santa Susana Field Laboratory, which includes the Area I Thermal Treatment Facility, does not lie within the 100-year floodplain.

#### 1. Source of Data:

Federal Insurance Administration  
Department of Housing and Urban Development  
Flood Hazard Boundary Map  
Ventura County, California

Map No. 46, Revision Date - 10/18/77

2. A Copy of the flood map is given in attachment VII.

3. 100 - Year Flood Level:



BNA01368706

The SSFL Area I Thermal Treatment Facility is located along the top of a ridge in the Simi Hills. The SSFL is located at an approximate average elevation of 1,800 feet above sea level. The highest 100-year flood level projected for the valley areas on either side of the SSFL site is an elevation of approximately 1,200 feet.

No flood protection devices or procedures since the Santa Susana Field Laboratory lies above the 100 - year flood plain.

## 2.3 HYDROGEOLOGY

### 2.3.1 SURFACE WATER

Surface water from rainfall at the Area I Thermal Treatment Facility which does not infiltrate into the ground runs off to the Perimeter Pond which is sampled on a weekly basis for chlorides, nitrates, fluorides, arsenic, and volatile organic compounds. Historical data suggest the rainfall runoff from the area has not resulted in contamination at the sampling location.

The Perimeter Pond is part of the SSFL reclaimed water system. The reclaimed water system, during normal operation and rainfall events, eventually becomes full. The water from this system is then discharged to Bell Canyon Creek. Analysis of the discharge waters is performed as specified in the NPDES permit number CA0001309.

### 2.3.2 GROUND WATER

A discussion of the groundwater at the facility is provided in the attached Sample and Analysis Plan.

## 2.4 METEOROLOGY

A Annual Surface Wind Rose is given as attachment VIII. As can be seen there are predominantly north westerly winds with a significant amount of south easterly flow. Only a very small percentage of the flow is in a north easterly or south westerly direction.

## 2.5 PREVIOUS INVESTIGATION AND REMEDIATION

In early 1982, during the process of removing debris and waste from the Area I Thermal Treatment Facility, Rocketdyne notified the California Department of Health Services and the Regional Water Quality Control Board that significant concentrations of contamination were located. A map noting the locations of the previous excavation is included as Figure 6 of the attached Sampling and Analysis Plan.

The contaminants were excavated and disposed of in accordance with the California regulations under the



BNA01368707

oversight of Department of Health Services staff. Laboratory analysis of the soil samples following removal confirmed that the significant contamination was removed. Copies of the correspondence confirming contamination removal are found in attachment I.

## 2.6 QUANTITIES OF HAZARDOUS WASTE TREATED AT THE FACILITY

During a typical treatment event between .5 and one pound of waste explosive materials were treated. The estimated monthly quantity of wastes that were generated (and therefore disposed of) was approximately 30 pounds, dependent on the activity level, with an estimated average of 7 to 8 pounds per month. This quantity represents the total amount of waste generated by the NAKA Laboratory and includes the slurry waste generated.

The waste consisted primarily of paper towels and cotton swabs used for cleaning, explosive material and limited quantities of liquids. The amount of the wastes treated at the Area I Thermal Treatment Facility is listed in Table 1.

Table 1. Estimated quantities of hazardous wastes treated at the Area I Thermal Treatment Facility. These estimates are based on area treatment logs that were kept as part of the normal operation. The monthly values were derived from the average annual values from the treatment logs.

Increment	NAKA		
	Propellents	TEA/TEB	Gas Cyl's
Per month (lb.)	24.72	1.92	1.28
Months per year	10	10	10
Years in operation	8	8	8
Estimated lbs treated	1977.36	153.6	102.4

## 2.7 PRE TREATMENT WASTE HANDLING

The explosive waste was accumulated near the generating area in an explosive test cell in velostat bags placed in an approved non-sparking aluminum container. Hazardous wastes were not stored at the Area I Thermal Treatment Facility.



BNA01368708

The handling processes for the explosive waste are discussed in detail in Operations Plan, Section Vlll.

## 2.8 HAZARDOUS WASTE CHARATERISTICS

### 2.8.1 PROPELLENTS

This section discusses the characteristics of the hazardous wastes handled at the Area I Thermal Treatment Facility.

Each bag of waste generated contained a small quantity of explosive material. The composition of the energetic material was placed on the bag label.

Each bag contained 0.5% to 5% (by weight) of the energetic material with the balance consisting of various cleaning materials such as paper towels and cotton tipped applicators, etc.

Some of the waste was generated in the cleaning of processing equipment. This waste consisted of oxygenated solvents, such as acetone, ethanol, isopropyl alcohol, and water containing trace amounts (less than five percent) of binders, oxidizers, plasticizers, and metals. For safety and handling purposes, this liquid slurry was mixed with an absorbent material to isolate potential explosive components and prevent any free liquids.

The monthly quantity of wastes generated from the NAKA Laboratory was between one and 50 pounds, depending on the activity, with an estimated average of 25 pounds per month.

### 2.8.2 PYROPHORIC WASTES

Each container of waste generated contained no more than 1/3 of a gallon of hypergol. The hypergol was covered with a layer of RP-1 to fill the container. This prevented spontaneous ignition during accumulation of the waste.

Small quantities of the surplus hypergolic compounds Triethylaluminum (TEA), and Triethylboron (TEB) were placed into a 55 gallon split steel drum located on the concrete pad and ignited. The waste materials were contained within the split drum to eliminated the possibility of soil contamination.

### 2.8.3 COMPRESSED GAS CYLINDERS

The contents of the occasional oxidizer compressed gas cylinder destined for detonation at the facility varied. All of the cylinders treated at the facility contained gases. Records indicate that the leaking or damaged cylinders containing such various gases as argon, hydrogen, fluorine, etc. were strapped to a metal pipe and pierced with a high-



BNA01368709



powered bullet. The piercing was performed following notification of the local Air Quality Management District.

## 2.9 TREATMENT RESIDUE MANAGEMENT

The composition of the waste propellant material treated was similar. It is therefore reasonable to assume that the treatment residues are similar. The products of treating the propellant wastes are carbon monoxide, carbon dioxide, water, nitrogen, nitrogen oxides, hydrogen chloride, potassium chloride, aluminum oxides, magnesium oxides, and carbon.

Following treatment of the propellant waste, the residue or ash was placed in a plastic container and a representative sample submitted to the Analytical Chemistry Laboratory for analysis of Title 22 metals. An example of a typical ash residue is attached as Attachment III. Based upon the results of the analysis, the ash residue was disposed properly.

The residues from the treatment of the TEA and TEB wastes are aluminum oxides and a boron salt. The containers were disposed of as non-hazardous waste since there were no remaining hazardous residues following combustion.

Debris following the detonation of the compressed gas cylinders were collected and disposed of as a non-hazardous waste.

## 3.0 CLOSURE

### 3.1 CLOSURE PLAN ORGANIZATION

A phased approach will be used for the implementation of the closure activities set forth in this closure plan. Figure 1 gives the management structure that will be used to monitor and control the implementation of this closure plan.

### 3.2 CLOSURE REQUIREMENTS

#### 3.2.1 PERSONEL QUALIFICATIONS

All personnel working on closure activities at the Area I Thermal Treatment Facility will have the appropriate training to work in a hazardous waste facility as specified in 29 CFR 1910.1200.

#### 3.2.2 HEALTH AND SAFETY PLAN

A health and safety plan will be created before the closure activities begin. In general, the plan will consist of a monitoring procedure that insure that the appropriate level of personal protection is maintained by all site personnel, an identification of the hazards that may exist at the



BNA01368710

ADDENDUM TO SECTION 3.3.3 PHASE I CLOSURE ACTIVITIES OF THE AREA I THERMAL  
TREATMENT FACILITY REVISED CLOSURE PLAN

The following shall be added:

Metallic structures found to be hazardous shall be steam-cleaned in order to decontaminate. After steam cleaning, the structures shall be resampled. If the results of the sample analysis show that the samples are non-hazardous, it will be disposed of as non-hazardous waste. If the samples show that the structures remain hazardous, it shall be placed into Department of Transportation-specification (DOT-specification) 15-yard hazardous waste bins for transportation to an approved treatment, storage and disposal facility.

During all demolition and decontamination procedures, modified level D and level C safety protection will be required for all site workers. The level of protection required will depend on the hazardous waste involved. Personnel health and safety monitoring shall be conducted during the demolition and decontamination procedures.



BNA01368711

#### 4.2 FINANCIAL ASSURANCE AND LIABILITY COVERAGE

##### Closure

Attachment V contains an originally signed duplicate of the financial assurance mechanism adopted for closure in accordance with Article 17, Title 22, California Administrative Code.

##### Liability

Attachment V contains an originally-signed duplicate of the documentation comprising compliance with liability requirements for sudden accidental occurrences of sections 67027 and 67028, Title 22, California Administrative Code.

#### 4.3 CLOSURE SCHEDULE

Final closure activities are not projected to require longer than 180 days. The schedule of closure activities is provided in attachment VI. The Area I Thermal Treatment Facility is expected to complete final closure in 1992.

#### 4.4 AMENDMENT OF CLOSURE PLAN

If it is determined from the sampling and analysis plan results that is not possible or reasonable to remove all contaminated soil, the closure plan and cost estimate will be revised and submitted to the EPA Region IX and to the Cal EPA-DTSC within 30 days.

If it becomes necessary to delay the closure activities from the timetable given in 40 CFR 264.113(b) the DTSC will be contacted and a request for additional time will be made. If it becomes necessary to increase the closure cost estimate, the DTSC will be notified within 30 days.

Copies of this plan and future revisions, if any, will be maintained at the Environmental Protection Department Office, Rockwell International Corporation, Plummer Facility, Canoga Park, California, until closure is completed and certified by an independent registered professional engineer and an authorized responsible corporate officer.

#### 5.0 POST CLOSURE

All contamination shall either be removed or treated on site during closure activities. Therefore, no post closure activities are planned. If it is not possible to remove all contamination, then a revised closure plan will be prepared. This revised closure plan will include plans for post closure monitoring.



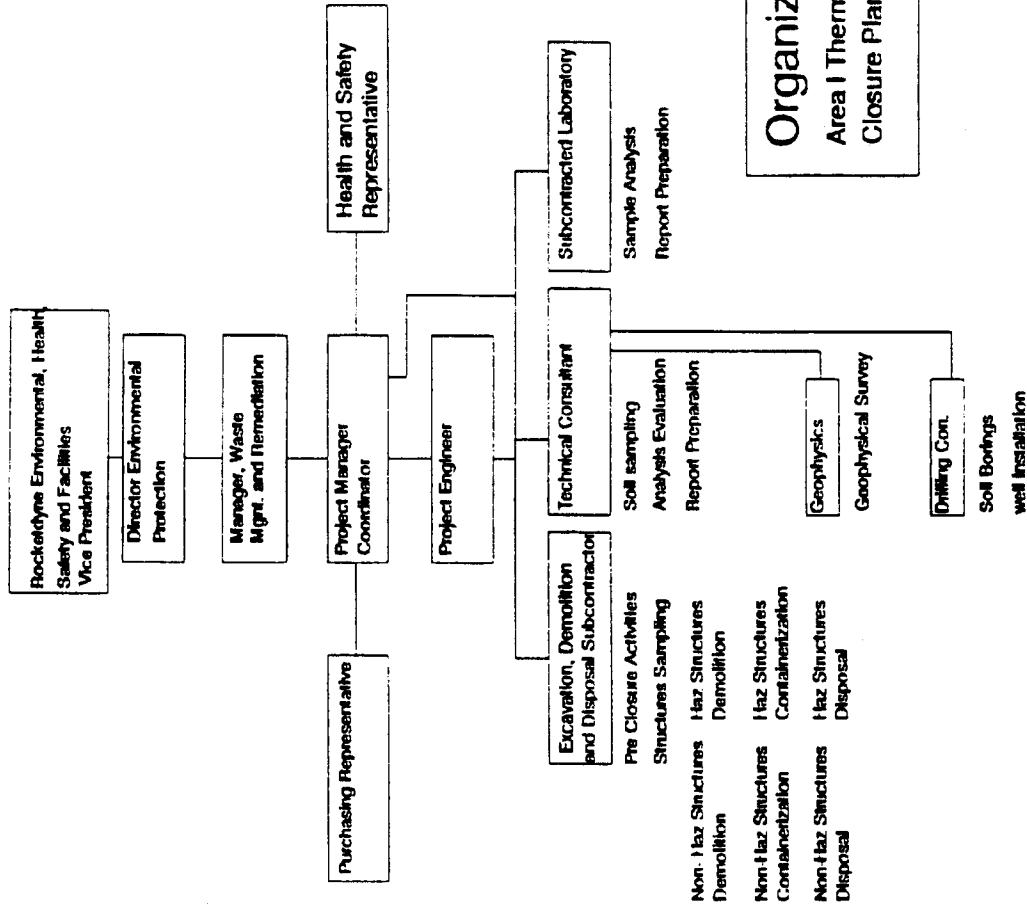
BNA01368712

Figure 1

Organization Chart  
Area I Thermal Treatment Facility Closure Plan



BNA01368713



**Organization Chart**  
Area I Thermal Treatment Facility  
Closure Plan



BNA01368714

Attachment I



BNA01368715

## DEPARTMENT OF HEALTH SERVICES

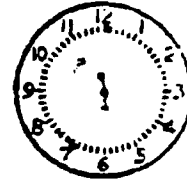
1000 SOUTH BROADWAY, ROOM 7128  
LOS ANGELES, CA 90012

(310) 620-2380



September 3, 1982

SEP - 9 '82 AM

ROCKETDYNE  
CORRESPONDENCEROCKWELL INTERNATIONAL  
Rocketdyne Division  
6633 Canoga Avenue  
Canoga Park, CA 91304

Attn: J.A. Bowman, Manager - Facilities Engineering

Dear Mr. Bowman:

COMPLETION OF EXCAVATION AND REMOVAL OF HAZARDOUS WASTES, BURN PIT AREA  
SANTA SUSANA FIELD LAB

Reference is made to the excavation of debris and wastes from your company's Burn Pit Area mandated by the California Regional Water Quality Control Board, Los Angeles Region.

During the course of that excavation, your company reported that significant deposits of hazardous wastes were unexpectedly encountered. Said hazardous wastes were excavated and disposed in accordance with the California Health and Safety Code under supervision of this office staff.

Laboratory analyses (copy attached) of soil samples taken confirmed that all significant deposits of hazardous waste has been removed. Therefore any of the tested soil which is removed from the site may be hauled as non-hazardous waste. It is recommended that the marginally contaminated soils be transported to a Class I disposal site.

Should further grading/excavation of the site disclose additional deposits of hazardous wastes, you are to contact this office immediately by telephone with written confirmation and evaluation of the situation within one week. Include details of mitigation measures proposed, together with a time schedule of implementation.

We sincerely appreciate the cooperation you have extended in the successful cleanup of this site. If you have any questions, please call Roy Thielking of my staff at the above number.

Sincerely yours,

Miller E. Chambers, P.E.  
Permits, Surveillance and  
Enforcement Section  
Hazardous Waste Management Branch

U8510RC

MEC:RT/gd



BNA01368716

cc: Thomas Jones  
John A. Hinton  
Raymond Hertel, CRWQCB-LAR  
→ Rockwell International - Michael Francis



BNA01368717



12 December 1980

80FE-533

TO: J. A. Bowman  
Rocketdyne-SSFL  
541, 055-SS12  
5014

FROM: R. D. Schmued  
Rocketdyne-SSFL  
541, 055-SS12  
5915

Subject: Meeting with the Staff of the Regional Water Quality Control Board

An informal meeting was held on December 10, 1980 at Rocketdyne's request with members of the Staff of the Regional Water Quality Control Board. This meeting was held in compliance with our NPDES permit which requires that the Board be notified of changes in the permit holder's operations. Those present were Dennis Dasker, Hank Yacoub and Bryan Jo Choi, representing the Staff, and Rolf Schmued, Michael Francis and Paul Kleinsmith, representing Rockwell Divisions located at the Santa Susana Field Lab.

Several items were discussed on an informal basis. We indicated that we had not received a response to a letter dated June 14, 1979, in which we suggested submitting a monthly waste water treatment plant coliform analysis in lieu of such an analysis performed on a sample taken at the time of discharge. We pointed out that, during the dry season when no discharges are made, the Staff does not receive any information on the treatment plants to be assured of their proper operation. The advantage to Rocketdyne would be that analyses could be submitted which are already routinely being taken. Since the samples taken for NPDES permit compliance are intended to be representative of the actual discharge, the Rocketdyne proposal may not be acceptable. A response will be forthcoming.

The presence of cattle in the buffer zone was discussed. Since the owner provides his own water and all Rocketdyne water discharged through the buffer zone must comply with NPDES standards, there is no problem in grazing cattle in the buffer zone.

The problem of 13 out of 59 samples from waste water discharges exceeding the chromium discharge limit of 0.01 mg/l by as much as 400% was discussed. The Analytical Chemistry Lab reports which prove that chromium is leached from the soil were submitted to the Staff for their review. The Staff requested that we furnish location data identifying the sampling points to assure that these could not have been contaminated by Rocketdyne operations. The staff also asked if we had been able to establish upstream and downstream concentration relationships. We responded that we had been unable to do so since our flume and weir installations had been damaged by heavy rains during the past years. We also stated that the installations had been repaired again and that we hoped to get some data during the coming rain season.

Various facility changes were discussed. The materials used at Facility 705 were reviewed and determined not to pose any water pollution problems. The generation of airborne fluorides was discussed with reference made to the Air Monitoring Center modeling study, which shows that rapid in-air dispersion occurs so that no adverse ground level concentrations could be washed into discharge channels.

101 # 8411310



BNA02571098

J. A. Bowman  
12 December 1980  
Page 2

STL-IV operations were reviewed in the context of NTO and MMH which have been used for many years, and with which we have a great deal of experience in handling safely. However, volume and frequency would be increased in support of the MX Program. Existing control ponds and treatment methods using  $H_2O_2$  would be continued, with weekly sampling. The fact that hydrazine was not limited specifically under the current NPDES permit was also brought out.

The new Propellant Loading Facility was reviewed. It was pointed out that extraordinary precautions are being taken to provide safety features so that accidents or spills would be self-limiting with the maximum possible being a 55-gal. drum. We explained that it was not our intent to contain an NTO spill if it should occur and that it would probably vaporize before reaching water bodies. We indicated that MMH would be held in an unlined pond where it would be treated in the event of an accidental discharge. The staff raised the question if it might not be preferable to line the pond in order to prevent the need, at some future time, to remove contaminated soil. However, the option was left up to Rocketdyne.

The planned use of the Engineering Chemistry Lab for the manufacture of GAP and nitroform in 1981 was discussed and the improvements made in ECL control systems were outlined, including the chemical waste pond, suspect water pond and the concentric chemical drain line from the reactor cells.

Paul Kleinsmith reviewed ESG operations, including PDU and Bowl operations. The review of the foregoing operations was well received and considered by the Staff not to pose any significant problems in need of immediate action. The upcoming NPDES renewal will be sufficiently timely to incorporate any new requirements. We were provided with the new EPA forms which the Staff will use for the renewal. These will be studied in January in order to determine the supporting data, particularly analytical data which will be required in support of the application.

The final item which was discussed was the Rocketdyne Burn Pit which was closed in 1971. The Staff plans to visit the site and to coordinate with us the further evaluation of this site. They indicate that a schedule should be developed for dealing with this. They also indicated a need to involve the State Department of Health. We reviewed steps taken to date to resolve the burn pit issue and requested that we continue on an informal basis to move toward a resolution, preferably without public attention. We pointed out that most disposals pertained to materials such as propellants, which were burned and that, for the most part, we expect very little residue other than the burned out containers. We will make every effort to cooperate with the regulatory agencies, thereby hoping to prevent the matter from becoming a public issue. We pointed out that the site was included in recent applications to the EPA for a Storage Treatment and Disposal Permit.



BNA02571099

J. A. Bowman  
12 December 1980  
Page 3

In summary - The Briefing was well received. Except for the planned visit by the Staff to the burn pit area, no immediate further action is required.



R. D. Schmued  
Environmental Control Specialist  
Facilities Engineering

RDS:ekv

cc: W. J. Baisley 598, 055-SS12  
R. D. Barto 052, 055-AA89  
A. R. Bjorklund 540, 055-BA65  
R. L. Dunham 541, 055-SS12  
S. Fischler 598, 055-SS12  
M. B. Frankel 522, 055-SS12  
N. S. Fujikawa 539, 055-SS11  
L. R. Grant 578, 055-BA48  
R. W. Hartzler 540, 055-BA67  
K. H. Johns 031, 055-SS12  
P. L. Kleinsmith 765, 071-J802  
F. B. Lary 596, 055-SS12  
J. H. Lieb 539, 055-AC10  
D. E. Lockett 540, 055-EB10  
D. J. O'Rourke 541, 055-SS12  
C. E. Winzer 031, 055-SS12



BNA02571100

## DEPARTMENT OF HEALTH SERVICES

107 SOUTH BROADWAY, ROOM 7128  
LOS ANGELES, CA 90012

(213) 620-2380



May 19, 1982

ROCKWELL INTERNATIONAL  
Rocketdyne Division  
6633 Canoga Avenue  
Canoga Park, CA 91304Attn: J.A. Bowman, Manager  
Facilities Engineering

Dear Mr. Bowman:

This is to confirm the May 17, 1982 telecon between Michael Francis of your company and Roy Thielking of this office.

Our review of your report titled "Chemical Analysis of Contaminated Soil Samples "Burn Pit" Snata Susana Field Lab" dated April 28, 1982, indicates that none of the samples analyzed contain hazardous waste in any significant concentration. Therefore, it is permitted to excavate and transport any of the subject contaminated soil as non-hazardous material.

Should field observations during excavation indicate the presence of possible hazardous concentrations, either such material must be transported as hazardous, or further laboratory tests must be conducted first.

Please notify this office one week prior to excavation, so a staff member can arrange to be present to observe and advise.

If you have any questions, please call Roy Thielking of my staff.

Sincerely,

A handwritten signature in cursive script that reads "Miller E. Chambers".

Miller E. Chambers, P.E.  
Permit, Surveillance and  
Enforcement Section  
Hazardous Waste Management Branch

MEC:RT/gd

cc: California Regional Water Quality Control Board  
Attn: Raymond M. Hertel  
William Jopling-HWMB  
John Hinton-HWMB

BNA00377279

CALIFORNIA REGIONAL WATER QUALITY CONTROL BOARD—  
LOS ANGELES REGION107 SOUTH BROADWAY, SUITE 4027  
LOS ANGELES, CALIFORNIA 90012 -4596  
(213)620-4460

May 28, 1982

BKK = owner's  
name  
= Benjamin  
Kazarian

Rockwell International  
6633 Canoga Avenue  
Canoga Park, CA 91304ATTN: Mr. J.A. Bowman, Manager  
Facilities Engineering

Gentlemen:

Reference is made to your letter dated April 22, 1982, and the accompanying report titled "Chemical Analysis of Contaminated Soil Samples, Santa Susana Field Lab".

We concur with your assessment of the laboratory results that only isolated instances of substances at marginally hazardous concentrations have been found in the "burn pit" soil testing areas.

Your request to dispose of the slightly contaminated soil at a Class I disposal site is hereby approved. *BKK in West Covina*

Please notify this office in writing when this material is removed and disposed of at a legal site, including a map showing the area(s) excavated, the quantities removed, and the name of the disposal facility receiving it and dates of disposal.

A staff member of the Department of Health Services, Los Angeles Office will arrange to be present at the site to observe the complete removal of the contaminated material.

Very truly yours,

*Raymond M. Hertel*  
RAYMOND M. HERTEL  
Executive Officer

cc: Department of Health Services, Hazardous Material Management Services  
ATTN: Mr. John Hinton, Regional Administrator



BNA00377278

## DEPARTMENT OF HEALTH SERVICES

107 SOUTH BROADWAY, ROOM 7128  
LOS ANGELES, CA 90012

3) 620-2380

September 3, 1982

ROCKWELL INTERNATIONAL  
Rocketdyne Division  
6633 Canoga Avenue  
Canoga Park, CA 91304

Attn: J.A. Bowman, Manager - Facilities Engineering

Dear Mr. Bowman:

COMPLETION OF EXCAVATION AND REMOVAL OF HAZARDOUS WASTES, BURN PIT AREA  
SANTA SUSANA FIELD LAB

Reference is made to the excavation of debris and wastes from your company's Burn Pit Area mandated by the California Regional Water Quality Control Board, Los Angeles Region.

During the course of that excavation, your company reported that significant deposits of hazardous wastes were unexpectedly encountered. Said hazardous wastes were excavated and disposed in accordance with the California Health and Safety Code under supervision of this office staff.

Laboratory analyses (copy attached) of soil samples taken confirmed that all significant deposits of hazardous waste has been removed. Therefore any of the tested soil which is removed from the site may be hauled as non-hazardous waste. It is recommended that the marginally contaminated soils be transported to a Class I disposal site.

Should further grading/excavation of the site disclose additional deposits of hazardous wastes, you are to contact this office immediately by telephone with written confirmation and evaluation of the situation within one week. Include details of mitigation measures proposed, together with a time schedule of implementation.

We sincerely appreciate the cooperation you have extended in the successful cleanup of this site. If you have any questions, please call Roy Thielking of my staff at the above number.

Sincerely yours,

Handwritten signature of Miller E. Chambers in cursive.

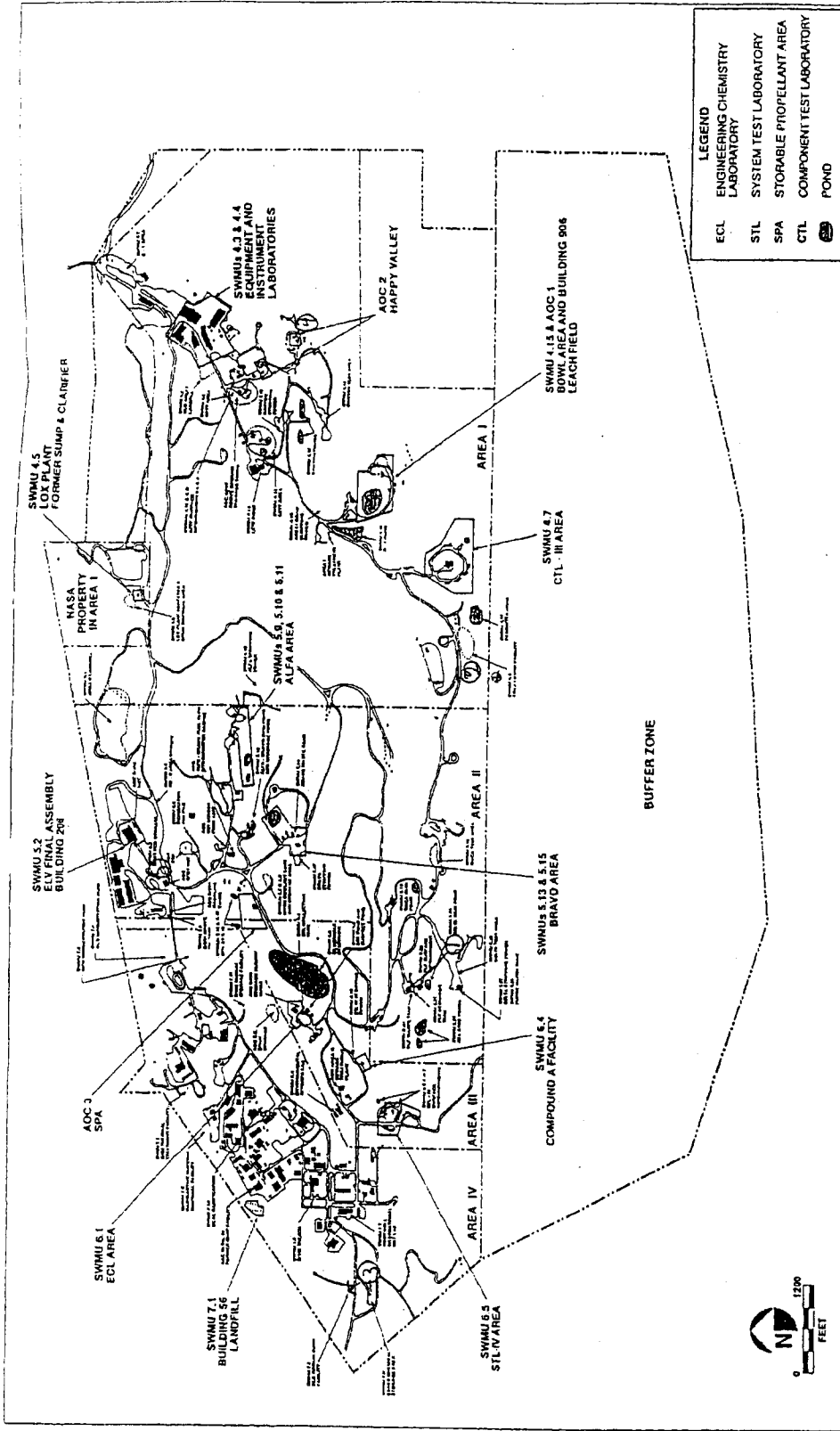
Miller E. Chambers, P.E.  
Permits, Surveillance and  
Enforcement Section  
Hazardous Waste Management Branch

MEC:RT/gd



BNA03211218

7



**LEGEND**

ECL	ENGINEERING CHEMISTRY LABORATORY
STL	SYSTEM TEST LABORATORY
SPA	STORABLE PROPELLANT AREA
CTL	COMPONENT TEST LABORATORY
	POND

FIGURE

1-3

SWMUs and AOCs  
Santa Susana Field Laboratory Facility



**OGDEN**



BNA03856920

AD EXHIBIT SPA  
 Promen  
 Date: 12-15-01  
 Date: Repair: *dlh*  
 www.ogden.com

EXHIBIT  
 7  
*0251mex 4/4/02*

# List of Propellant Containers at Burn Pit for Disposal of Contents.

1 Ton NTO Cyl. - 3 Ea. SN 4998, 330220, 3381  
1 K-Bottle SN Unknown.  
55 Gal Drums of the Type IRFNA is stored  
in - Believed to contain NTO. Possibly  
2 with IRFNA. SN 4, 5, 6, 7, 8, 9, 10 - also 5  
Drums marked - U.S. Property Alcoa Alum. with  
no ser. numbers.

55 Gal. Drum IRFNA - 1 SN 30

250 lb K-Bottles of Pyroforic Liquids -  
No Serial Numbers Obtained.

10-Yellow Bottles } Can obtain serial  
10-Red Bottles } numbers if needed  
5-Blue Bottles }

1 - 1/2 Ton Container SN 83035 RP0435  
4 - Small Pots (similar to propane tanks)

5 - Very Small K-Bottles containing  
Nitrosyl Chloride

1 - Large Dewar Type Container  
Made By Cryenco SN 125  
NASA S 5-39 320

3 - Very Small K-Bottles of  
Bromine Trifluoride.

1 - Very Small K-Bottle of  
Acetylene.

C.H. HEATH 4/012 GAS }  
H.A. HUNTER 4/012 GAS } 5-21-70  
EXT: 7370





- 1 - Large Container - Contents Unknown!  
Made for Dow Chemical Co. SN F021069
- 5 - K-Bottles of Dry Nitrogen  
SN 240218, 45585, 484866, 858881, 163990.
- 5 - K-Bottles of zero Gas SN 27948, 62563,  
50560, 53822, 21088.
- 3 - Very Small Pres. Bottles.
- 3 - K-Bottles of Methane Ethane  
SN 3789, 3573, 26742.
- 2 - K-Bottles of Ammonia  
SN 5887, 28002.
- 1 - Large K-Bottle of Hi-Cal-3  
SN E-870
- 1 - 1/2 Ton Container of Hybaline and RP  
SN OMCC-LOCW-57-773-0782
- 2 - K-Bottles of Methane  
SN 919648, 5265 (RP 659571)
- 9 - 55 Gal. Drums of Hydrazine.  
SN 2200, 4096, 2083, 5141, 3124, 1940,  
4956, 895, 3422.
- 10 - Misc. K-Bottles - Contents Unknown -  
Scattered around Burn Pit area. Some  
near fire areas, some half buried  
in the ground.

50  
2  
15



BNA03134647

CYLINDERS DESTROYED July 1970  
1. F<sub>2</sub> - SERIAL FH 2540 ✓

2. BROMINE PENTA FLUORIDE  
GEN. CHEMICAL - SERIAL R-579 ✓

3. FLUORIDE - MATHESON SERIAL ~~78542~~ 542 ✓

4. BROMINE PENTA FLUORIDE ✓ SERIAL - R5015

5. UNKNOWN RP 64-9208

6. UNKNOWN RP 4-920-

7. US NAVY MPOG07

8. FLUORINE MIXED CHEM. 29-230411

9. HYDROGEN FLUORIDE RC 4463



BNA03134648

4-6-71

Tea - 1000 Containers	51 each	Research
Ammonium Nitrate - Disc. 10000	Cabinet	Warehouse
Explosives A-F	Cabinet	Research
Flashing Caps	Cabinet	Research
Acids	4 drums	...
<u>ACIDS - HYDROCHLORIC</u>	2 CARBOYS	PDA
<u>ACID - CLEANING</u>	1 DRUM - PLASTIC (20 GAL SIZE)	PDA

Memo:  
Items mentioned in red disposed  
of by St Company 10 April 71  
# 78



BNA03134636

Green MK	1 Drum	Research
HIS-10	1 Ton cylinder	SI
<u>Nitric Acid</u>	5 Gal container	Canoga
<u>Hydrochloric Acid</u>	3 - 10 Gal containers	I.L.
<u>One - Carboard type drum</u> No Identity	1 Gal Glass container	E. Lab
Cupric Chloride	5 Gal size	Canoga
Misc. Laboratory Chemicals	2 - Cartons	PDA
Aluminum Chloride	2 - Boxes	Canoga
NTO containing hardware and Cylinders	3 - 5 Gal size containers	Eng. Chem. Lab-PDA
<u>Pyridine</u>	12 ea. (2 cylinders)	Eng. Chem. Lab. PDA
MIPP	6 - 1 Gal. Bottles	Energy Conversion Area
Hydrocarbons	2 - 5 Gal. containers	Energy Conversion Area
Unknown Substances	1 - 5 Gal. containers	Energy Conversion Area
Paint	2 - Drums	
Hydrocarbons	2 - 5 Gal. containers	F/091
Hydrocarbons	45 Drums - Full	SIPL
<u>Compress Gas Cylinder</u>	1 Drum - partial	SIPL
Xylene	1 ea.	Life
<u>Misc. Lab Chemicals</u>	10 Gal. container	SIPL
Phosphorous	1 Drum container	Canoga
Sodium Phosphate	1 Unit (cabinet)	Canoga
Sodium Nitrate	2 - bottles (1 lb) Cabinet	Canoga
Boron Amorphous	12 - bottles (1 lb) Cabinet	Canoga
<u>Flares - broke</u>	1 - Carboard type drum	Research
<u>Lithium Metal</u>	50 ea. cabinet	Research
Zirconium-Hydride powder	1 Unit cabinet	Canoga
Electrolytic Solution	1 Unit cabinet	Canoga
Hexane	1 Drums	Comp. A Facility
	6 Drums	Research



BNA03134637

SPACE AND SYSTEMS GROUP

EAC 68-15

Date 20 September 1968

TO Those Concerned  
Address

FROM E. F. C. Cain  
Address D/991-350 SS11

Phone 5066

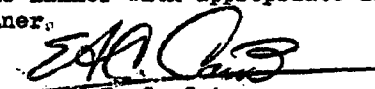
Subject WASTE DISPOSAL

The purpose of this I.L. is to remind each responsible program engineer and appropriate members of supervision that the disposal of waste products and/or excess chemicals arising from any program being carried out at SSFL is primarily the responsibility of the appropriate technical personnel and his supervision. This problem is not new, but it is becoming more acute as we increase our chemical processing work. Indiscriminate "tossing down a sink", venting, or "dumping into a water run-off" is not an acceptable procedure. Federal, state, local, and/or Rocketdyne regulations must be met.

In the past, most things were sent to the burn pit where they could be easily burned and would not result in the formation of toxic combustion products. In many instances, this is no longer a valid solution to our disposal problem.

Accordingly, it is the responsibility of the appropriate responsible program engineer to (1) determine what waste products will be formed or excess chemicals remain on his program, (2) determine the most economical and safe procedure for disposing of these materials, (3) acquire appropriate concurrence of proposed disposal procedures from Plant Protection Services, Industrial Engineering at SSFL, who are responsible for pollution control at SSFL, the Chemistry Safety Committee and the Chemical and Material Sciences resident manager at SSFL in addition to his own line supervision, and (4) see that the disposal is, in fact, accomplished.

It may be desirable in certain instances to store excess chemicals which could be useful in other programs. If this is the case, it is the responsibility of the same responsible program engineer to see that the materials are stored in an acceptable manner with appropriate labels and to maintain the material in this manner.



E. F. C. Cain  
Manager  
Engineering & Analytical Chemistry  
Research Division

SFCC:alm



BNA02268630

6-Aug-1980

NORMA, this copy of the cumulative burn pit disposal inventory includes a classification column and indicates the Health department's classification of the listed materials.

H = HAZARDOUS WASTE  
EH = EXTREMELY HAZARDOUS WASTE  
T = TOXIC  
C = CORROSIVE  
I = IRRITANT  
F = FLAMABLE  
S = STRONG SENSITIZER  
P = PRESSURE GENERATING

M.A. Francis



BNA00377280

Copy # 4

2 copies - N. Fujikawa WA.

Material	Total Quantity	Classification	Notes
Acetic Acid	995 gal	H (T, F)	Copy # 2 A. E. Johnson
Acetonitrile	5 gal	H (T, F)	Copy # 4 N. Fujikawa
Acetylene	1125 lbs	H (C, I)	
Acids	3413 gal	H (T, C)	
Alcohols	15350 gal	H (T, F)	
Alkali Metals	310 lbs		
Aluminum	50 lbs	H (F)	
Aluminum Oxide	115 gal	H (T, C)	
Ammonia	2238 gal		
Ammonia Dichloride	650 lbs	H (I, F)	
Amyl Nitrate	2 gal	H (T, F)	
Aspirin	215 lbs		
<b>BARIUM CHLORIDE</b>	50 lbs	H (C)	
BENZENE	232 gal	H (T, F)	
Bermite CARTRIDGES	72		
BLACK POWDER - $KNO_3, + C, S$	116		
Blasting CAPS	1 CABINET		
BOROL	4 lbs		
Boron Fuel	166 gal	EH (T, F)	
Boron Trifluoride	240 gal	5 lbs	H (T, F)
Boron Hydroxide	1 lb		
Bromine Compounds	5 K.F. ...	H (T, C, I)	
BUNADINE Polymer	3 lbs		
Calcium Hydroxide	415 lbs	H (C, F)	
Calcium Oxide	50 lbs		
Calcium Sulfate	240 lbs		
Carborane	240 lbs		
Carborane Oxide	156 gal	(T)	
Cartridges	1051 gal	H (C, I)	
Cesium	7 lbs		
Chemicals Various	227 gal	H	
Chlorine	1930	EH (T, C, F)	
Chlorine Trifluoride	27 gal	EH (T, C, F, I)	
Chlorine Dioxide	80 lbs		
Chromic Acid	81 gal	H (T, C, I)	
Comp. A	5 lbs		
CONAX Valves - Explosive Actuator	3		
CTF IGNITERS	15	EH (T, C, F, I)	

HA



BNA00377281

Material	Total Quantity	Classification
Decon Solution	330 gal	
Dicyclopentadiene	58 gal	H (T, I, S)
Diesel Fuel oil	1000 gal	H (F)
Dibutyltin dichloride	55 gal	H (T, F)
Dinitrotoluene	1 lb	H (T, F, P)
Ditto Acid - ALCOHOL	116 gal	
Delta methyl	110 gal	
Dioxin	3 gal	EH (T)
Dynamite	50 lbs	
Electric Igniters	5297	
Ethylene Dichloride	635 gal	H (T, I, S)
Electrolyte	200 gal	
Epoxy	30 gal	H
ETHANOL	10 gal	
Ethylene Oxide	1 cylinder	H (T, I, F, P)
EXPLOSIVE BOMBS - like valve	5	H (P)
EXPLOSIVE BOMBS	10 lbs	1 distinct H (P)
FERROGENE - LIQUID IRON	5 lbs	
FIBRE	1820	
FIBROX	1 cylinder	
FLUORINE	117 lbs, 10,280 ST <sup>3</sup>	
Flushing oil	385 gal	
FUEL waste	56,806 gal	H (T, F)
FERRON	15 gal	
GASOLINE	165 gal	H (T)
Glycerin	1 gal	
GEAR oil - hydrocarbon	165 gal	
HEPTANE	2850 gal	H (T, F)
HEXANE - Be, Li	1795 gal	H (T, F)
Hybrid Motor GRAINS	160 lbs.	
Hybaline - hydraz. der	2 cylinders	
Hydraulic oil	55 gal	
Hydrazine	46,963 gal	
Hydrocarbon	130,473 gal	
Hydrochloric Acid	180 gal	
Hydrogen Gas	5040 ST <sup>3</sup>	
Hydrogen fluoride	10 ST <sup>3</sup>	H (T, F)
HYPERCAL THERMOS	20	



BNA00377282



MATERIAL	QUANTITY	CLASSIFICATION
IR FNA	660	
Isopropyl Alcohol	285 gal	H (T, C)
Isomyl Ester	110 gal	F (T, F)
TD-4	625 lbs	?
	4900 gal	
KETONES	422 gal	H
Lacquer Diluted	55 gal	H (T, I, F)
LACHRYMATORY	70 gal	?
LANCE GRAINS	345 lbs	?
Lithium	70 gal --- 42 lbs	H (C, F)
LITHIUM CHLORIDE	15.7 gal	
Mercury	2 gal	H (C)
Methanol	5800 gal	H (T)
Misc. Chemicals	3200 gal	H (T, F)
Misc. Flammable	218 gal	?
Misc. Oxidizing	600 lbs	?
Metrial - tri-nitrate - explosive	25 lbs	
Muriatic Acid	1470 gal	H (T, C)
Myxine	5715 gal	
NAK	152 lbs	
Napalm - Jellied Gasoline	51 gal	
Nitric Acid	61 gal	H (T, C, F)
Neutralized Acid	45 gal	
Nitrocellulose	25 lbs	H (F, F)
Nitroglycerine	1 lb	H (T, C, F)
Nitroamine	1 lb	
NTO	23502 gal	H (T, F)
Nitrosyl Chloride	51 gal	?
Nitroglycerine	4 gal	H (T, F, P)
Oils	55,725 gal	H (F)
Oxygen	1600 gal	H (T, C)
Paint - Titanium oxide	3612 gal	
Paint Thinner	189 gal	H (I, F)
Peracetic Acid	360 gal	H (T, I, F)
Perchloric Acid	55 gal	H (T, I, F)
PERMANGANATE MIX	55 gal	H (T, F)
Diluted		

TMETN

Liq  
in  
explosive

sod-  
sulfate



BNA00377283

MATERIAL	QUANTITY	CLASSIFICATION
PLASTIC Nitrocellulose	5 lbs	H (F, P)
Phenols	?	H (T, C)
Phosphorus (white)	1 unit	EH (T, F, P)
POTASSIUM	25 lbs	H (C, F, P)
POTASSIUM CYANIDE	1 pt.	EH (T)
Perchloroethylene	20 gal	H (T, I)
Potassium Permanganate	165 gal	
Propellant, Solid	10 lbs	H (T, C, F)
Pyrophoric Aluminum	960 lbs	?
Pyrophoric Iron	6 lb	H (F)
Pyrotechnic Igniters	418	
Pyridine	374	
RENA	6 gal	H (T, F)
RAM SET CHARGE	4203 gal	H (T, C, F)
RJ-1	300	H
RP-1	3930 gal	H
Resins	75,755 gal	
Rifle Shells - double based prop	150 gal	
Silicate of soda	100	
Smoke flares - phosphorus	50	
Smoke Mix cpds	705 lbs	
Sodium	2941 lbs	H (C, F, P)
Sodium Acetate	1 pt.	EH (T)
Sodium Hydroxide	20 gal	H (T, C)
Sodium Nitrate	10	H (T, I)
Solvent	2271 gal	H (T, F, P)
Sulfuric Acid <STANDARD Solvent	33 gal	H (F)
Tetra Isobutylene	155 gal	H (T, C)
Tributylamine	1280 gal	
Tributylamine	1 gal	
TEA	406 gal	846 lbs
TEAB	237 gal	720 lbs
Titanium	100 lbs	H (F)
TER	150 gal	765 lbs
Tri fluorooctic Anhydride	1 gal	



BNA00377284

MATERIAL	QUANTITY	
TRICHLOROETHANE	200 gal	
Toluene	395 gal	H(T, F)
Triethylene Glycol - Dinitrate	6 lb	?
Tetrafluorane	2 gal	?
Titanium tetrachloride	1 pt	H(T, C)
Titanium trichloride	1 pt	?
VM&P Naptha	330 gal	H(T, F)
Xylene	10 gal	H(T, F)
ZERO GAS	480 ft <sup>3</sup>	?
Zirconium Hydride Powder	100 lb	



BNA00377285

To: NORMA FUJIKAWA Copy #2

1961 → 1971

" DISPOSED OF "

Material	Total Quantity
Acetic	995 gal
Acetone	5 gal
Acetylene	1175 ft <sup>3</sup>
Acids	3413 gal
Alcohol	12830 gal
Alkali Metals	310 lbs
Aluminum	50 lbs
Aluminum Chloride	115 gal
Ammonia	22.38 gal
Ammonium Perchlorate	630 lbs
Amyl Nitrate	5 gal
Argon Gas	240 ft <sup>3</sup>
Asbestos	50 lbs
Benzene	232 gal
Bermite Cartridges	72
Black Powder	1 lb
Bia. Gas	1 CABINET
Borax	4 lbs
Boron Fuel	166 gal
Boron Trifluoride	240 ft <sup>3</sup> 5 lbs
Boron Hydride	1 lb
Bromine Compounds	5 K Br <sub>2</sub> / gal
Butadiene Polymer	3 lbs
Calcium Hydride	15 lbs
Calcium Chloride	50 lbs
Calc - 3	3 + 2 gal
Carbon Monoxide	240 ft <sup>3</sup>
Carbon Disulfide	156 gal
Caustic Soda	1051 gal
Cesium	7 lbs
Chemicals, Various	377 gal
Chlorine	1930
Chlorine trifluoride	27 gal
Chlorine gas	30 lbs
Chromic Acid	31 gal
Comp. A	5 lbs
CONAX VALVES	3
CTF IGNITERS	15
Cyclotetramethylene-Nitramine	500 gal

AT THE  
BURN PIT



BNA00377286

Material	Total Quantity
Decon Solution	330 gal
Diethylene Triamine	550 gal
Diesel Fuel oil	1000 gal
Methylene cyclohexane	125 gal
Diazine	150 gal
Dinitro toluene	1 lb
Ditto fluid	116 gal
Delta	110 gal
Dioxin	3 gal
Cyranite	30 lbs
Electric Igniters	5297
Ethylene Glycol	635 gal
Electrolyte	200 gal
Epoxy	30 gal
Ether	10 gal
Ethylene Oxide	1 cylinder
EXPLOSIVE BOLTS	5
EXPLOSIVE WAFERS	10 lbs + 1 cabinet
FRIGORANE	5 lbs
FLASE II	1820
FLOROX	1 cylinder
FLUORINE	117 lbs, 10,280 ft <sup>3</sup>
FLUSHING oil	385 gal
FUEL, waste	56,806 gal
Ferrous	15 gal
GASOLINE	165 gal
Glycerin	1 gal
GEAR oil	165 gal
HEPTANE	2860 gal
HEXANE	1795 gal
Hybrid Motor GRAINS	160 lbs.
Hydrogen	1 cylinder
Hydraulic oil	55 gal
Hydrazine	46,969 gal
Hydrocarbon	130,423 gal
Hydrofluoric Acid	180 gal
Hydrogen Gas	5040 ft <sup>3</sup>
Hydrogen Fluoride	10 ft <sup>3</sup>
HYDROCAL TONERS	20



BNA00377287

MATERIAL	QUANTITY
IGNITERS	660
IR FNA	225 gal
Isopropyl Alcohol	110 gal
Isopropyl Butane	625 lbs
TD-4	4900 gal
KETONES	422 gal
LACQUER Diluted	55 gal
LACHRYMATORY	70 gal
LANCE GRAINS	345 lbs
Lithium	70 gal --- 42 lbs
LITHIUM Chloride	1320 gal
Magnesium	2000 lbs
MERCURY	2 gal 2 can
Methanol	5800 gal
Misc. Chemicals	3233 gal
Misc. Flammables	21855 gal
MIXED OXIDES	600 lbs
Metrial - tri-nitrate	25 lbs
Muriatic Acid	1470 gal
MYDYNE	5745 gal
NAK	152 lbs
NADALM	51 gal
Nitric Acid	61 gal
Neutralized Acid	115 gal
Nitrocellulose	20 lbs
Nitrocellulose	5 lbs
Nitroamine	1 lb
NITRO	23502 gal
Nitrosyl Chloride	50 gal
Nitroglycerin	4 gal
Oils	55.775 gal
OXYGEN Diffusion	21 cylinders ; 1690 gal
Oxygen gas	3612 ft <sup>3</sup>
PAINT	189 gal
PAINT Thinner	360 gal
PERACETIC	301 gal
PARA Xylene	55 gal
PERMANGANATE MIX	55 gal
PLATING SOLN	255 gal



BNA00377288

MATERIAL	Quantity
PLASTIC Nitrocellulose	5 lbs
Phenols	?
Phosphorus	1 unit
POTASSIUM	35 lbs
POTASSIUM Cyanide	1 qt.
Perchloroethylene	30 gal
Polymers	1165 gal
POTASSIUM PERMANGANATE	10 lbs
Propellant, Solid	960 lbs
Pyrophoric Aluminum	6 lbs
Pyrophoric Igniters	448
Pyrotechnic Igniters	394
PYRIDINE	6 gal
RFNA	4 203 gal
RAM SET CHARGES	300
RJ-1	3930 gal
RP-1	95,255 gal
Resins	150 gal
Rifle Shells	100
Silicate of soda	50 gal
Smoke flares	50
Smoke Mix	705 lbs
Sodium	2941 lbs
Sodium Arsenite	1 qt.
Sodium Hydroxide	550 gal
Sodium Chloride	10 lbs
Sodium Nitrate	22 gal
Solvent	33 gal
Sulfuric Acid	155 gal
Tetra Iso butylene	1450 gal
Tributylamine	1 gal
Tributylamine	10 gal
TEA	406 gal ; 846 lbs.
TEAB	937 gal ; 920 lbs.
Titanium	100 lbs
TER	150 gal ; 765 lbs
Tri fluoracetic Anhydride	1 gal
Trimethyl-BORANE-METHANOL	40 gal
Trimethyl-BORON	2 gal



BNA00377289

MATERIAL

QUANTITY

TRICHLOROETHANE	2.55 gal
Toluene	385 gal
TRIMETHYLENE-Glycol-Dinitrate	5 lbs
TETRA FLUORIDE	7 gal
Titanium tetrachloride	1 pt.
Titanium trichloride	1 qt.
VM&P Naptha	337 gal
Xylene	10 gal
ZERO GAS	480 ft <sup>3</sup>
ZIRCONIUM Hydride POWDER	1 CABINET



BNA00377290



Disposal  
Area



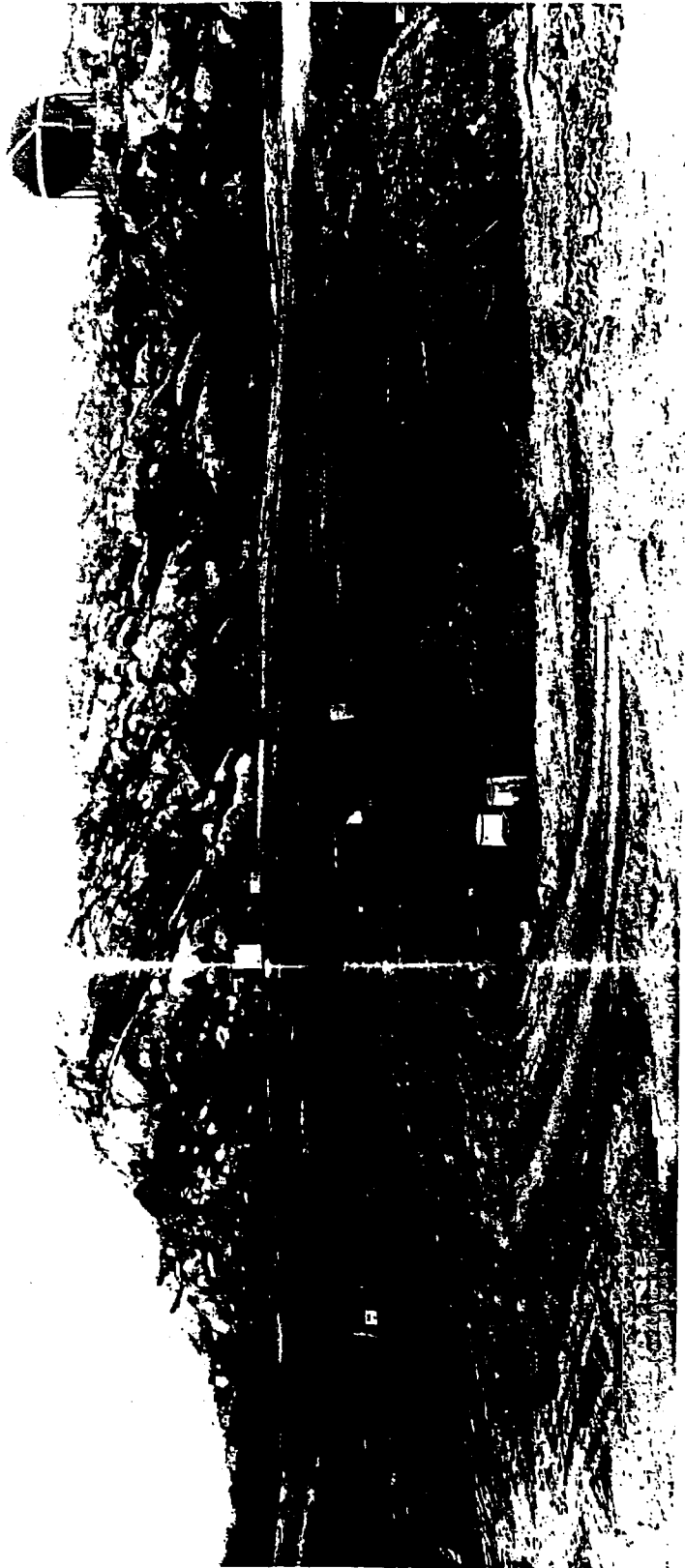
BNA01906227



9TE78-3128/67



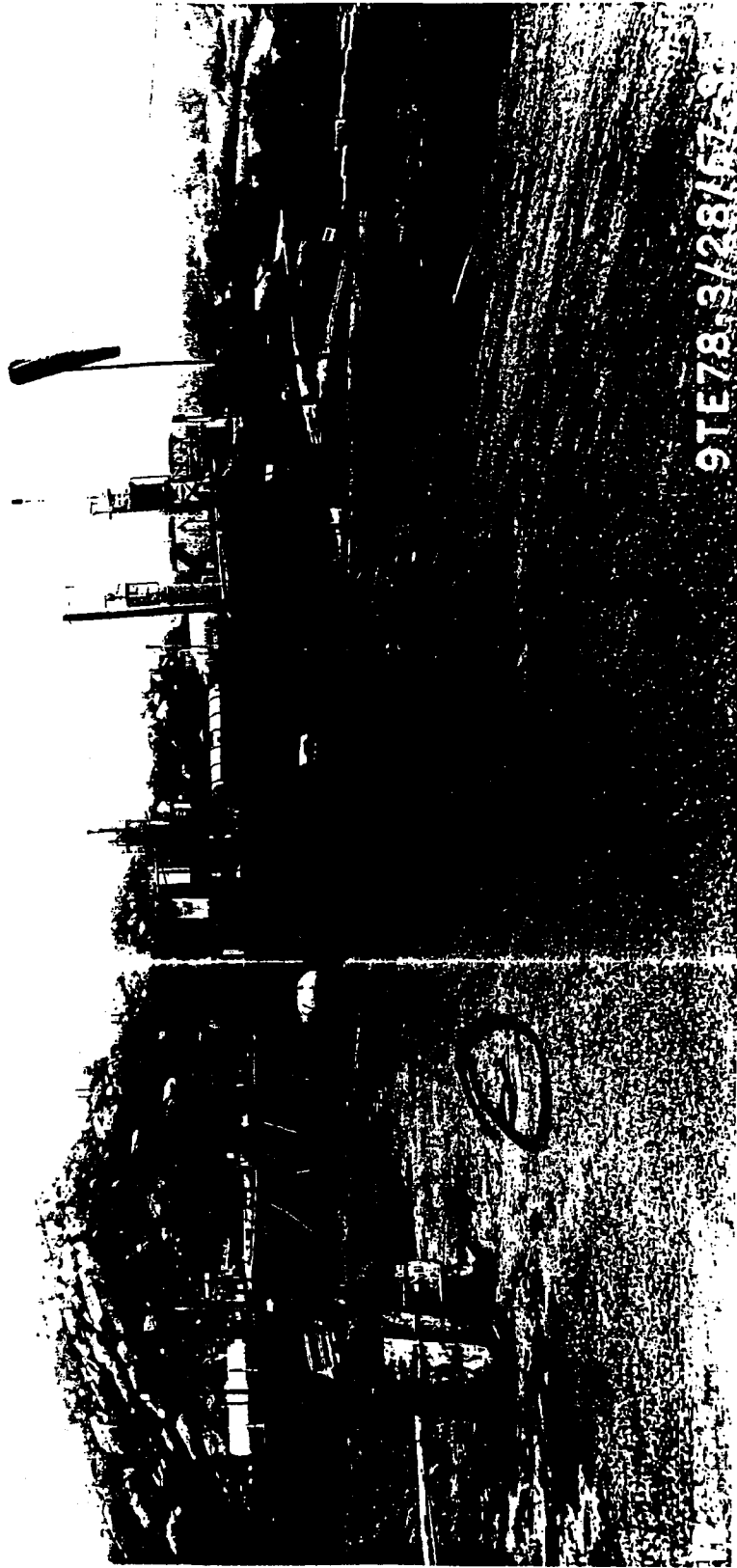
BNA01906228



BNA01906229



BNA01906230



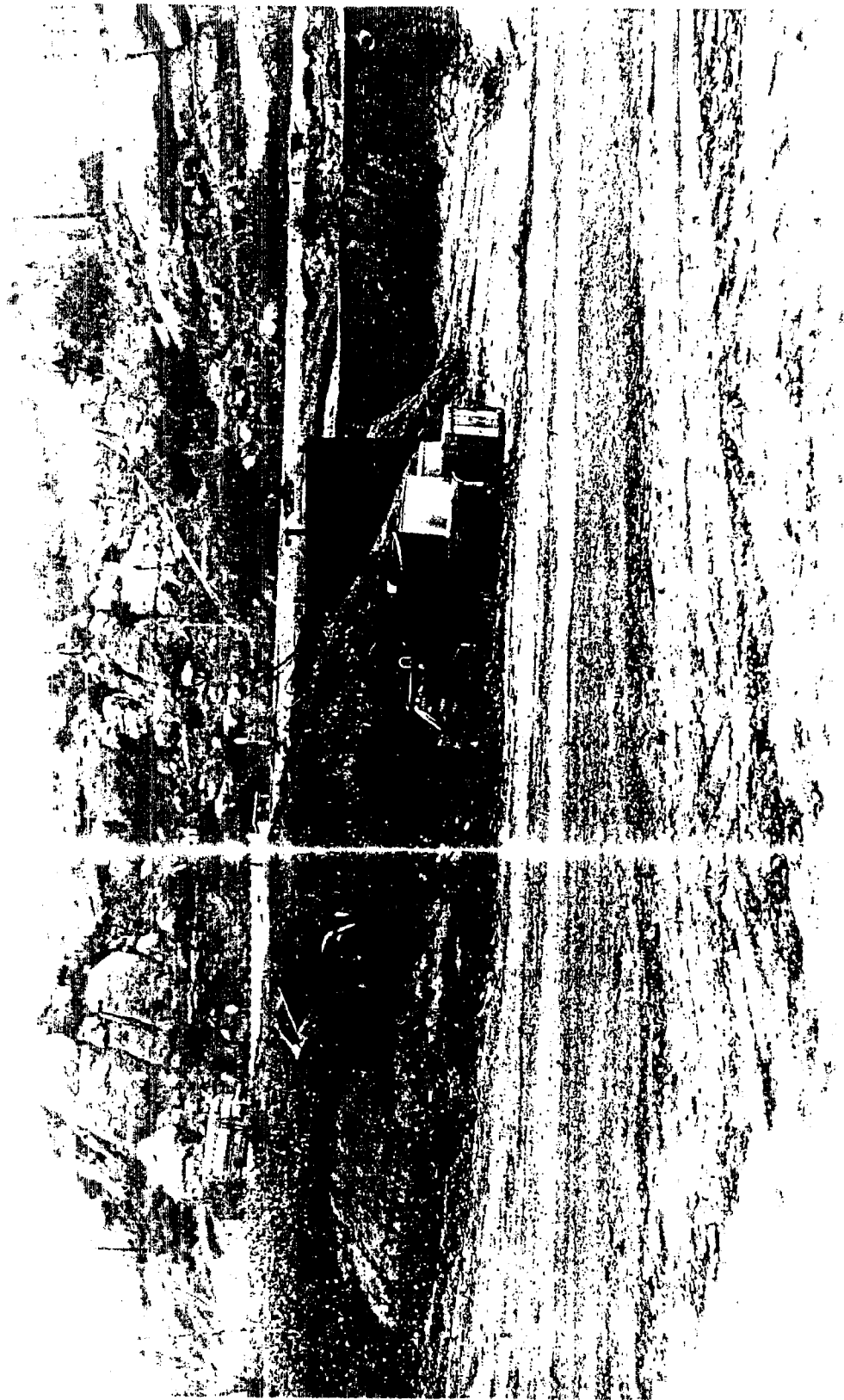
9TE78 3/28/67



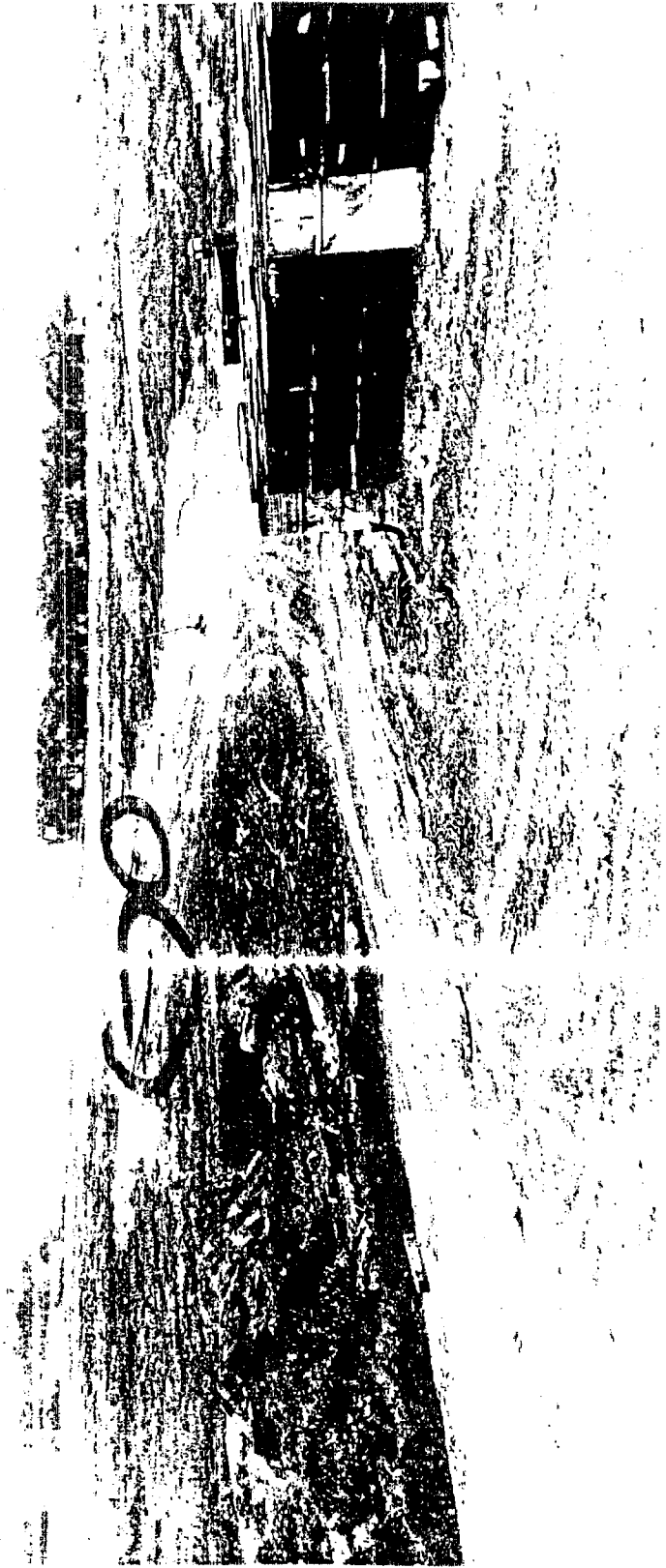
BNA01906231



BNA01906232



BNA01906233



BNA01906234

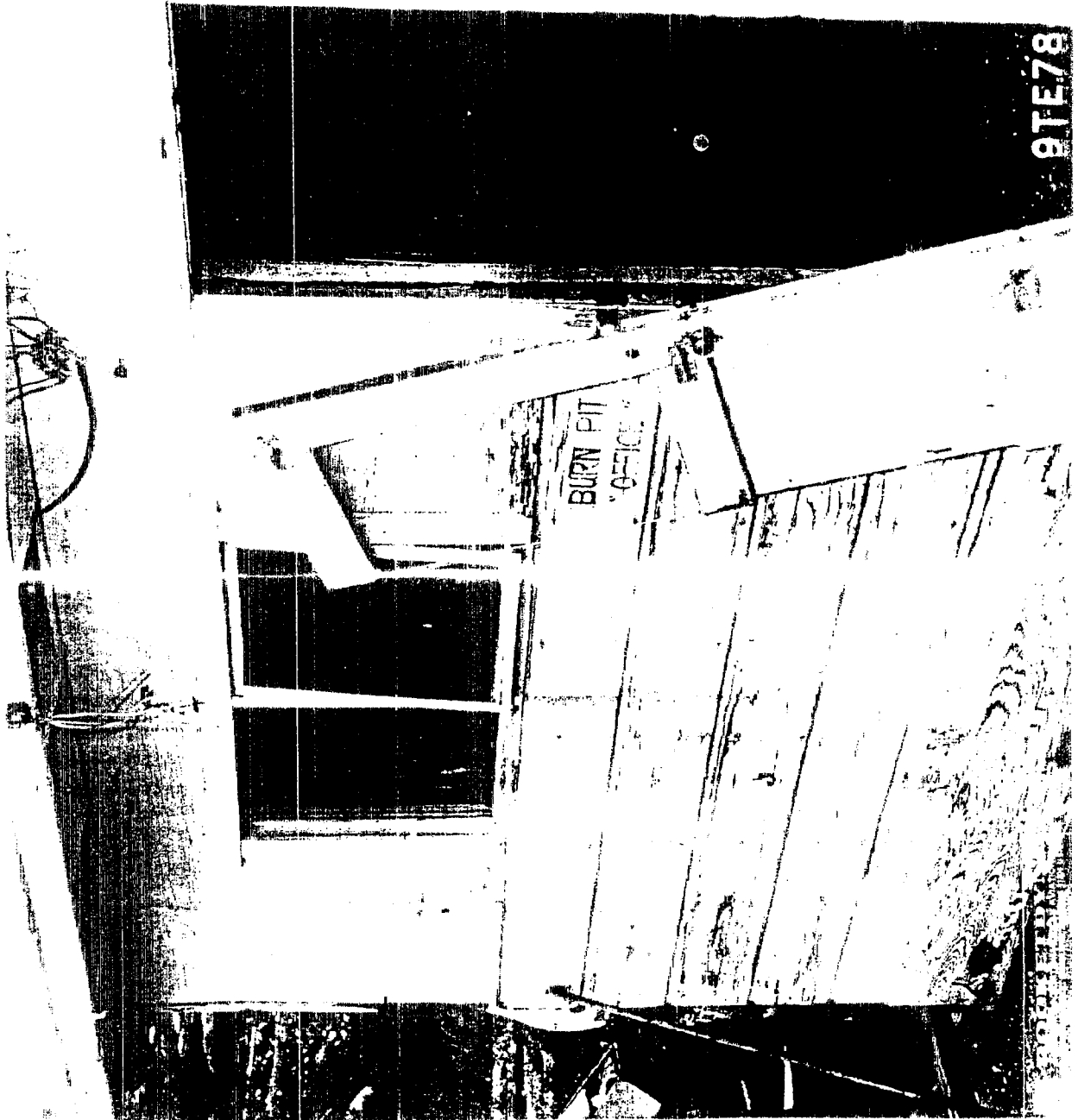
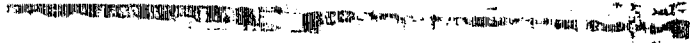




AT 118 2128/67 811



BNA01906235



9TE78

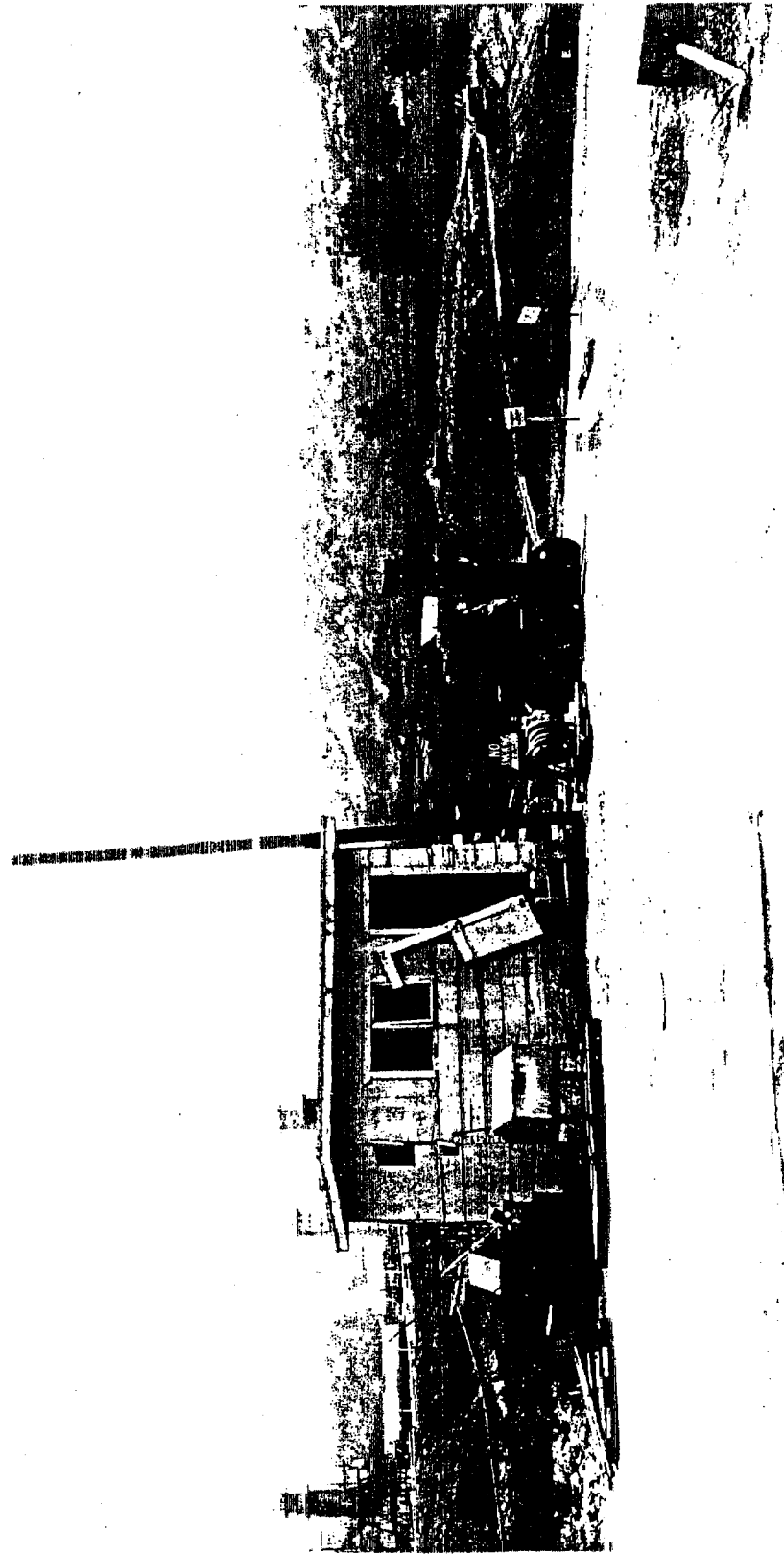
BURN PIT  
OFFICE



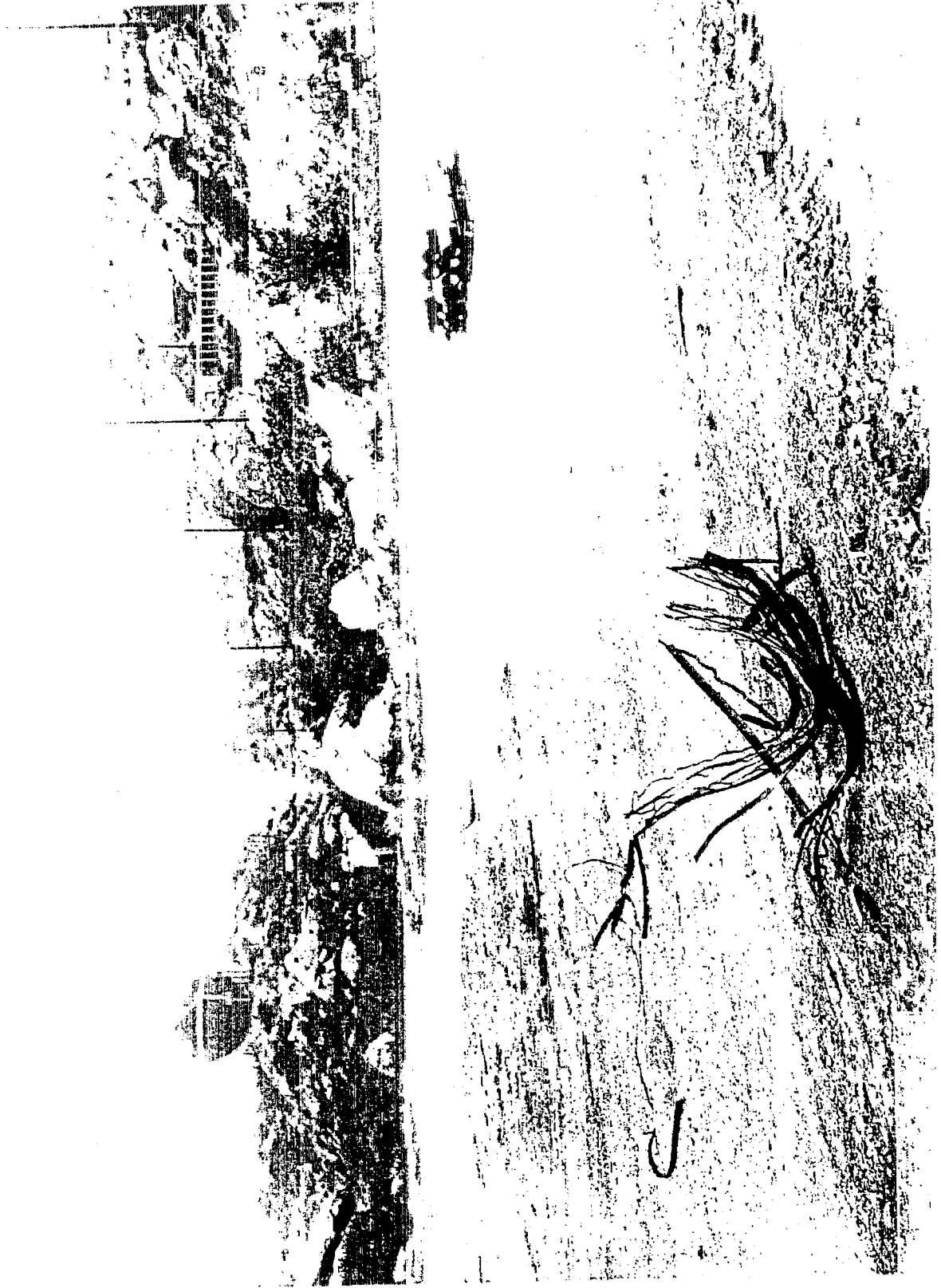
BNA01906236



BNA01906237



BNA01906238



BNA01906239



BNA01906240

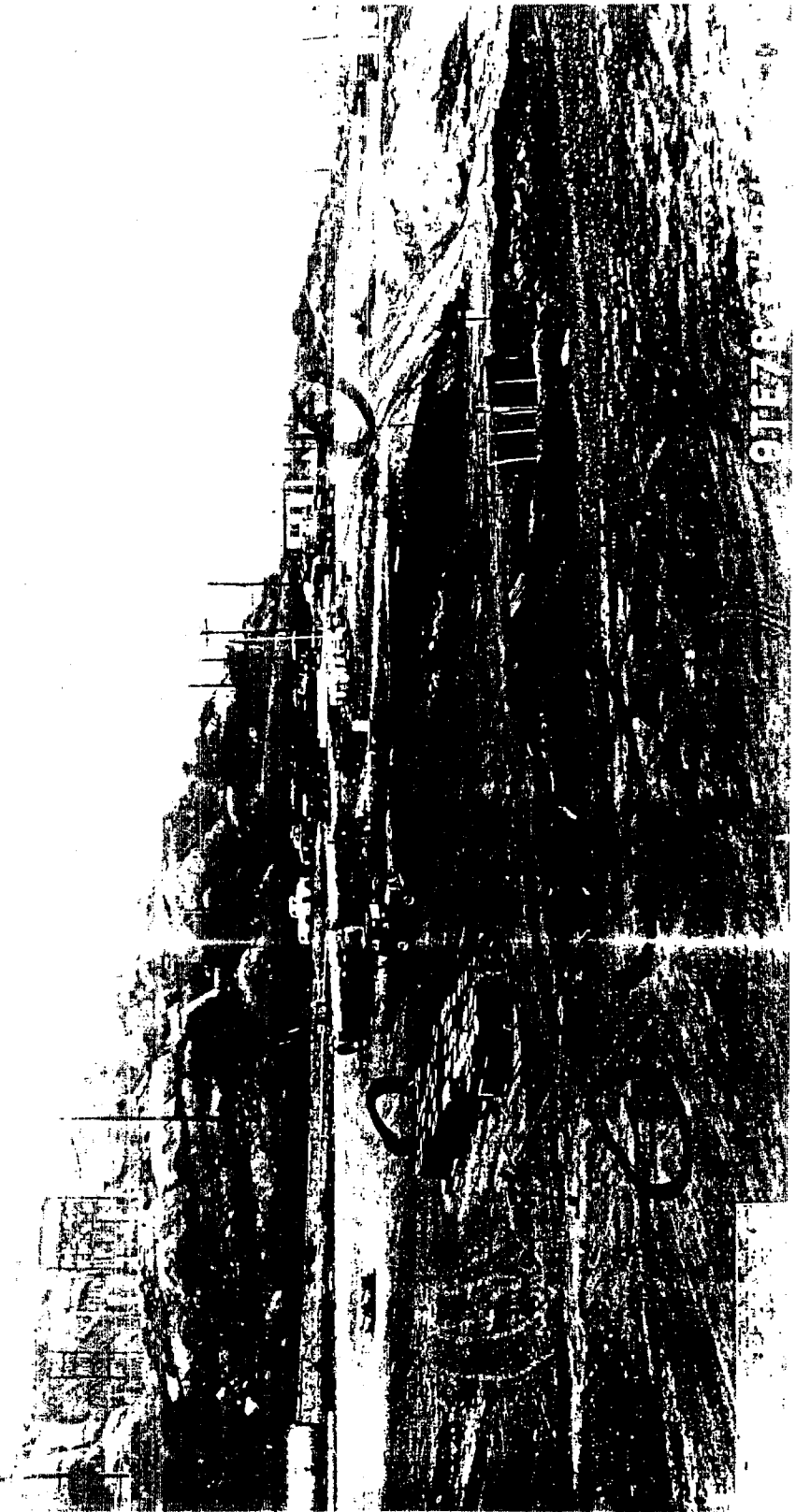


BNA01906241



BNA01906242





91E78



BNA01906243

11/1

# ROCKETDYNE

INTER-OFFICE LETTERS ONLY

TO R.J. Madden DEPARTMENT  
FROM E.G. Addeo DEPARTMENT  
PHONE 520 DATE  
SUBJECT Monthly Report

-----

Time Consumed.

Inspections:	P/E Addeo	4 hrs	TOTAL TIME = 20 hrs
	J.S. Curican	<del>14</del> 6 hrs	
	R.E. Smith	10 hrs.	
Burning	P/E Addeo	4 Hrs	TOTAL TIME = 39½ hrs
	J.S. Curivan	18 hrs.	
	R.E. Smith	17½ hrs	
Drum Removal	J.S. Curican	3 hrs	TOTAL TIME = 6 hrs.
	R.E. Smith	3 hrs	
GRAND TOTAL TIME			65½ hrs.

Material on hand awaiting disposal;

NONE.

P/E E.G. Addeo



4 pages

To: Chief O. C. Ledbetter  
From: Capt. A. W. Miller  
Subject: LOX Spill; Bravo Area and Subsequent Events

Page -2-  
8 September 1958

-----  
Wednesday afternoon, before the conclusion of the first shift, you will recall that the writer informed you of these events, and that the only additional temporary instructions the writer would issue to fire personnel would be at the time of tanking from truck to tanks. During this tanking, we would follow Mr. Lodge's request and close down flames and sparking devices in the area. This was done Wednesday night in two instances, and caused quite a lot of oppo-

Thursday, 4 September 1958, conference with Mr. W. R. Johnson, D/596-07 (Group Leader. Mr. Johnson is in agreement with D/552, and feels that present fire regulations are sufficient to cover all unknown emergencies at FYL. He feels more strict control is necessary on tanking and transfer operations.

Thursday afternoon, conference at your office in Canoga. As a result, before the conclusion of the first shift, verbal and written instructions were issued to Police and Fire personnel to enforce only our own written regulations as we have done in the past, and if other departments have more strict requirements, they may enforce them, but we will not. The writer returned that evening and gave the same instructions to Police and Fire personnel at the beginning of the third shift, because of the illness of the third shift Fire Engineer, leaving a Police Sergeant in charge of fire operations.

Friday morning, 5 September 1958, conference with Mr. Lodge. It was agreed that instructions he had issued were only temporary, and that the whole matter would be turned over to the Propellant Field Applications Group headed by L. J. Weber, D/596-92. The writer phoned Mr. Weber, who is in complete agreement with D/552 fire regulations at present, and desires no change or additions to them at this time. A meeting was arranged for the first part of the week with Mr. Weber to confer on anything else necessary in regard to LOX transfers.

The writer had a meeting with W. J. Cocks, Senior Management Representative, regarding all the foregoing conversations, particularly with reference to Mr. Lodge's report, and Mr. Cocks was of the opinion that this would have to be changed and said that he would attend to the matter.

**"ROCKETDYNE EXPOSURE EVALUATION COMMITTEE":**  
This new committee has been formed as of 25 August 1958. With the advent of new chemicals, fuels, oxidizers, etc., it is imperative that adequate protection of our personnel be made continuously effective in Test, Research and Manufacturing. For this purpose, the Rocketdyne Exposure Evaluation Committee is hereby activated and charged to establish adequate protective standards which, in turn, will be submitted to the Rocketdyne Management Safety Committee for final approval and acceptance.

To: Chief O. C. Ledbetter  
From: Capt. A. W. Miller  
Subject: LOX Spill; Bravo Area and Subsequent Events

Page -3-  
8 September 1958

-----  
The minimum membership is appointed and is comprised of the following:

Chairman-Secretary - 596 Analysis and Equipment Group Leader -  
D. J. Jolicœur

596 Propellant Field Applications Supervisor - L. D. Weber

552 Industrial Security - Capt. A. W. Miller

551 Medical Director - Dr. A. L. Waller

593 Plant Engineering - E. L. Spearman

551 Safety - Rex B. Gordon

851 Safety, Industrial Hygiene Consultant - J. B. Ficklen

BURN PIT FOR THE DISPOSAL OF DANGEROUS MATERIALS:

Several months ago, while in the Inspection Office, the writer had a large earthen pit constructed near the west boundary line of FYL just below SWL III. This was, and has since been, used to dispose of dangerous chemicals, fuels, oxidizers, explosives, etc. These are burned with quantities of ordinary contaminated fuels. This procedure eliminated the costly method in use at that time, of trucking them from the facility and dumping in the ocean or by other complicated ways of disposal requiring permits from various official agencies, etc. This usually required from three to six months, and similar materials were accumulating everywhere as a result. Arrangements have been made with Transportation regarding safety practices in handling. Inspection and conveying of these materials is done by the Fire Department. The writer has just been informed by Don Hatz, D/596-62, of the Propellant Field Applications Group that an official procedure is being written on the disposal of hazardous materials. This will incorporate the D/552 disposal method as standard procedure. Large amounts of Hydrazine, UDMH and other materials, which have required expensive neutralization methods, can be disposed of in this manner in the future. For example, 45 drums of asserted mixtures of UDMH and Hydrazine are being disposed of at this time. This would ordinarily require a large amount of Hydrogen Peroxide for the neutralization material.

CONTRACTORS' JUNKIE, AREA II:

This is the area set aside for contractors' shacks and various materials. It has always been an unsightly mess. A fire break has been constructed around this location and intervening brush and grass burned out. Large amounts of accumulated rubble from former contractors has been buried. The area is now safe and contractors will be allowed to burn a limited amount of small material under controls. The whole area is being cleaned up and will be patrolled regularly in the future.

To: Chief G. C. Ledbetter  
From: Capt. A. W. Miller  
Subject: IGX Spill; Bravo Area and Subsequent Events

Page 4  
8 September 1958

.....

NITROGEN TEROXIDE, TEMPORARY STORAGE LOCATION:

This has been located in Area II in the open land between the Silverdale Lake and the Contractors' Jungle. Brush and grass were burned from the perimeter and storage of about 30 tons of this material is now accomplished. This relieves the dangerous storage condition that existed around the SO-1 Area.

POWER FAILURE, EPL:

On Saturday evening, 6 September 1958, at 5:32 P.M., the entire facility suffered a power failure as a result of lightning. Edison Company power was off for about one hour. The writer was notified at home by the Control Center Operator and drove up to the facility immediately. Considerable difficulty was experienced in locating the proper Edison Company Office furnishing power to this facility. Telephone numbers listed were out of date. The procedure for notification in event of power failures, etc., at this facility was also found to be out of date, and should be rewritten. This will be taken care of in the immediate future.

A. W. MILLER  
Fire Captain  
Santa Rosa

AWM/ljk

H. Weiss

# ROCKETDYNE

## INTER-OFFICE LETTERS ONLY

TO Chairman, Management Safety Committee DEPARTMENT 577 Cano  
 FROM Duncan Jolicoeur DEPARTMENT 596-62 SanSu  
 PHONE 238 DATE 4 December 1958  
 SUBJECT ACTIVITIES SUMMARY -  
 ROCKETDYNE EXPOSURE EVALUATION COMMITTEE

The fifth meeting of the subject committee convened in the PFL Manager's Conference Room at 0830 Wednesday, 26 November 1958.

Those in attendance were:

J. B. Ficklen, III	Industrial Hygiene Consultant
R. B. Gordon	Safety Section
D. J. Jolicoeur	Engineering Test Sub-Division
A. W. Miller	Capt., Industrial Security
L. D. Weber	Propellant Field Applications Unit
A. L. Weller, M.D.	Medical Director

Absent - E. L. Spearman Plant Engineering

Guests - W. J. Cecka, Jr., and R. Wilkins

### DISCUSSION SUMMARY:

In response to a request for data on the physical geometry of the test systems and the fluid dynamics of the systems under test with toxic propellants, the chairman opened the meeting with a description of the characteristics and operational phenomena of a large thrust chamber stand and an engine stand. It was demonstrated that the test systems are well engineered to negate the possibility of inducing contamination with the following exceptions: a) leakage as a function of gasket failure, b) leakage as a function of valve "hang-up", and c) the exuding of effluent as a function of the "raw lead" of oxidizer before fuel, which is normal to the test configuration. The "double safety" techniques of the test stands were explained.

The committee then continued their discussion of the previous meeting on possible approaches to the establishment of quantitative levels of personnel exposure to contaminated atmospheres.



IOL To: Chairman, Management Safety Committee  
From: Duncan Jolicoeur  
Subject: ACTIVITIES SUMMARY -  
ROCKETDYNE EXPOSURE EVALUATION COMMITTEE

4 December 1958  
Page 2

-----

The possible relationship of the problems of toxicity and blast were raised by Mr. Ficklen. His contention is that we may be able to establish a percentage value of the available propellant as that constituting a contaminant, and refine the percentages as additional data becomes available, as was the case in determining blast damage potential. At the inception of the blast problem, an estimated yield, of TNT equivalent, of 20% of available propellant was employed as design criteria. Later, as a result of thermo-chemical computations of the propellant combination, it was determined that 5.48# of LOX were required to reduce 1# of kerosene fuel to a gel yielding .56# of TNT, thereby reducing the available blast energy to approximately 6% of the total propellants involved. It was expressed that although the problems are dissimilar, the approach to problem solving may have strong similarities.

Dr. Weller briefly reviewed the progress of the medical surveillance program, including new equipment and laboratory techniques.

Messrs. Wilkins and Cecka reviewed the progress of the committee. The following expressions were developed:

- a) A more complete documentation of the meetings is desired for future reference and future action.
- b) The committee shall restrict its scope of cognizance to matters dealing with the health-physics aspects of toxic propellants.
- c) The accent shall continue to be placed on the development of criteria to prevent personnel injury from toxic exposure rather than considerations of liability in event of exposure.
- d) The committee membership, comprised of representatives from several departments, should consider themselves less from a departmental specialization standpoint, and more as a part of a homogeneous group working to solve a common problem.
- e) The committee has been successful in bringing together representation from the various departments affected to discuss the total problem and, in that each department is aware of impending action on the part of others, there should be no "surprises" to anyone in these departments as concerns the toxic propellant program.
- f) The question of publicizing the existence and nature of the committee for employee and public relations purposes will be placed before the Management Safety Committee.



BNA00879569

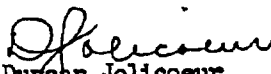
IOL To: Chairman, Management Safety Committee  
From: Duncan Jolicoeur  
Subject: ACTIVITIES SUMMARY -  
ROCKETDYNE EXPOSURE EVALUATION COMMITTEE

4 December 1958  
Page 3

-----

The sixth meeting of the committee will be held in the  
PFL Manager's Conference Room at 0830 Wednesday, 10 December.

The agenda for the sixth meeting will consist of a discussion of toxicity  
detection devices; their applicability, value of the measurements, and  
recommendations as to the extent of PFL usage. Messrs. Summerfield, 596-62,  
and Weiss, 596-60, will participate.

  
Duncan Jolicoeur  
Chairman-Secretary  
Rocketdyne Exposure Evaluation Committee

DJ:md

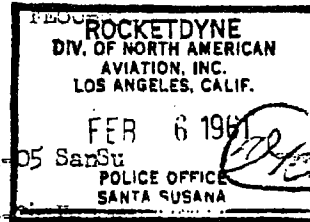
cc: The Committee Membership  
Management Safety Committee Membership



BNA00879570



ROCKETDYNE  
INTER-OFFICE LITIGATION ONLY



TO W. C. Wensel DEPARTMENT  
FROM W. Bodnar DEPARTMENT  
PHONE 1451 DATE 20 October 1960  
SUBJECT HAZARDOUS MATERIAL DISPOSAL FACILITY- PFL  
Project 8000596  
REFERENCE IOL W. C. Wensel to A. E. Moore dated 7/1/60

*Add:*

A facility to meet present and anticipated needs for the disposal of contaminated and surplus propellants and chemicals is proposed. Estimated cost of the complete facility shown on the sketch "General Arrangement", pages 5 is \$35,000.

The present disposal area, off CTL III Road in Area I, is assumed as the job site and components of the facility are arranged accordingly. The two existing "Solids Disposal Pits" are considered adequate and other than addition of lighting and paving thereto, are not further referred to in this proposal.

Features such as remotely controlled dumping and ignition, walls separating burn pits from operating personnel and storage areas, and fencing around the entire area are adopted to ensure that operation of this facility will be compatible with general safety standards at PFL. In addition to sketches, pages 5 through 9, the following describes the major facility components, their functions and operations.

#### BURN PITS, SPILLWAYS, AND SPILL AREAS

Two pits 10 ft. x 10 ft. x 4 ft. deep and 30 feet apart are provided for the burning of liquid propellants and general chemicals. Liquids are gravity fed to the pits from individual spill areas by open spillways 60 ft. long. One pit is intended for the exclusive burning of toxic high energy type liquid propellants and the other for admixtures of various liquid combustibles and general chemicals. Materials to be disposed of are separated into two groups for burning in the respective pits, since increasing quantities of the high energy type propellant are disposed of and cleanliness of surfaces contacted by these propellants is of paramount importance. In addition to a water flush and drainage system serving each pit, the pit used for disposal of general chemicals includes a sump and grates to retain unburned remnants of containers and packages. Admixtures of liquid propellants and chemicals may be disposed of by hand depositing containers and packages in the pit followed by liquid deposit using the spill area and spillway facilities.



BNA03134620