

ROCKWELL INTERNATIONAL CORPORATION
ROCKETDYNE DIVISION
SANTA SUSANA FIELD LABORATORY

CONCENTRATIONS OF
BACKGROUND GROSS ALPHA
AND GROSS BETA
RADIOACTIVITY

GROUNDWATER RESOURCES CONSULTANTS, INC.
CONSULTANTS IN HYDROGEOLOGY
TUCSON, ARIZONA 8640 M-77

FIGURE 4

E X P L A N A T I O N

- RD-1 CHATSWORTH FORMATION WELL
- RS-1 SHALLOW ZONE WELL
- WS-1 ABANDONED WELL

- OS-13 SPRING

- NE-4 NATURAL EMITTER ROCK SAMPLE
- NE-3 NATURAL EMITTER SOIL SAMPLE

- TEST STAND

- UNITED STATES WEATHER STATION #249

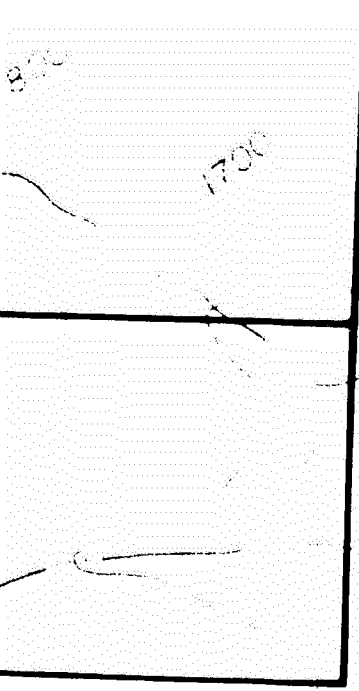
- RD-6 WELL IDENTIFIER

MAXIMUM CONCENTRATION IN PICO CURIES PER LITER IN FILTERED GROUNDWATER SAMPLES (CONCENTRATIONS IN SOIL & ROCK SAMPLES ARE IN PICO CURIES PER GRAM)

HA 3.11 ± 2.42
A 6.22 ± 2.79

RADIOACTIVITY

NOTE: BACKGROUND SAMPLES WERE COLLECTED FROM 10/17/89 THROUGH 11/01/89. SAMPLE ANALYSES WERE PERFORMED BY UNITED STATES TESTING COMPANY, INC.



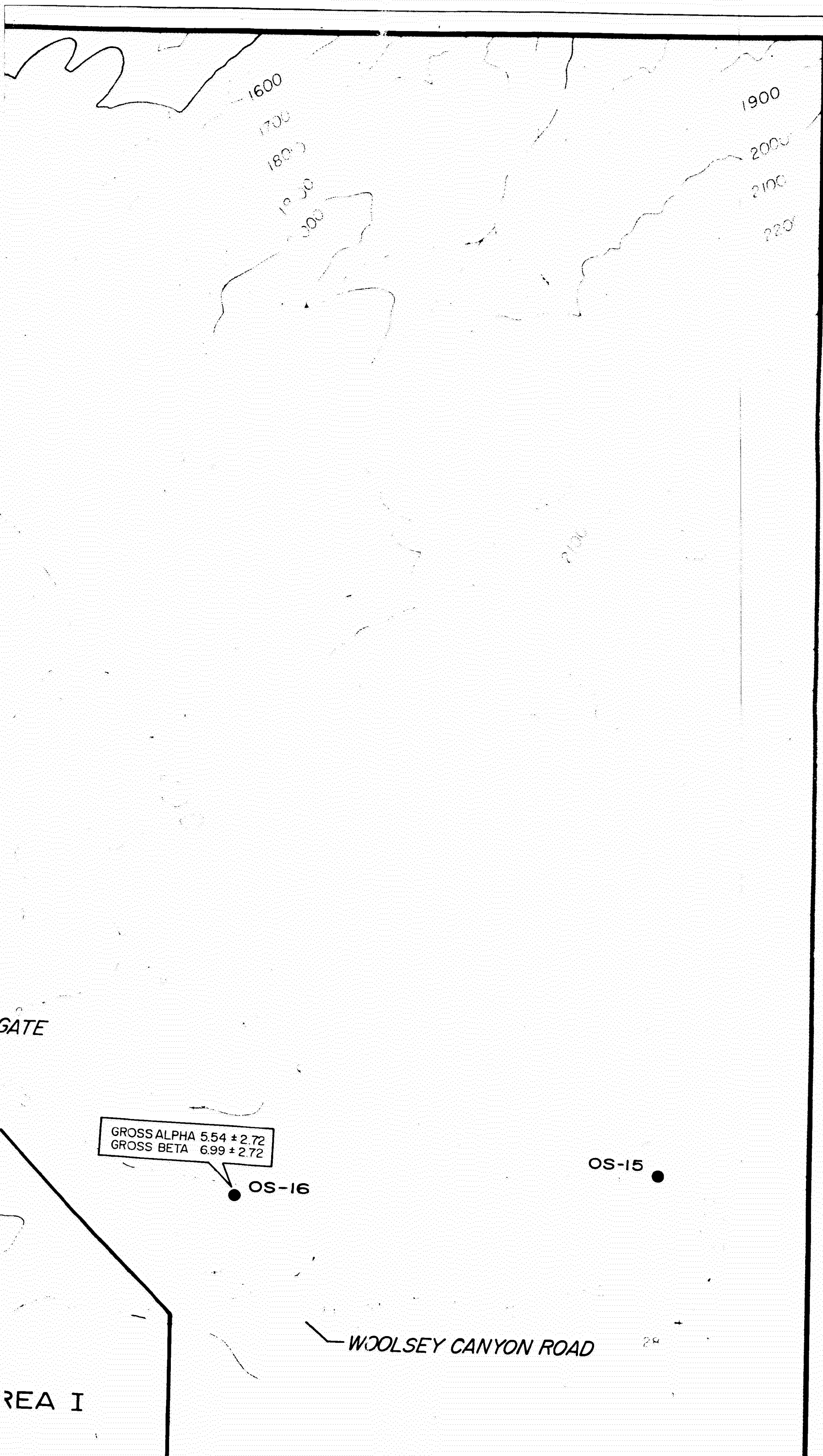
● OS-17



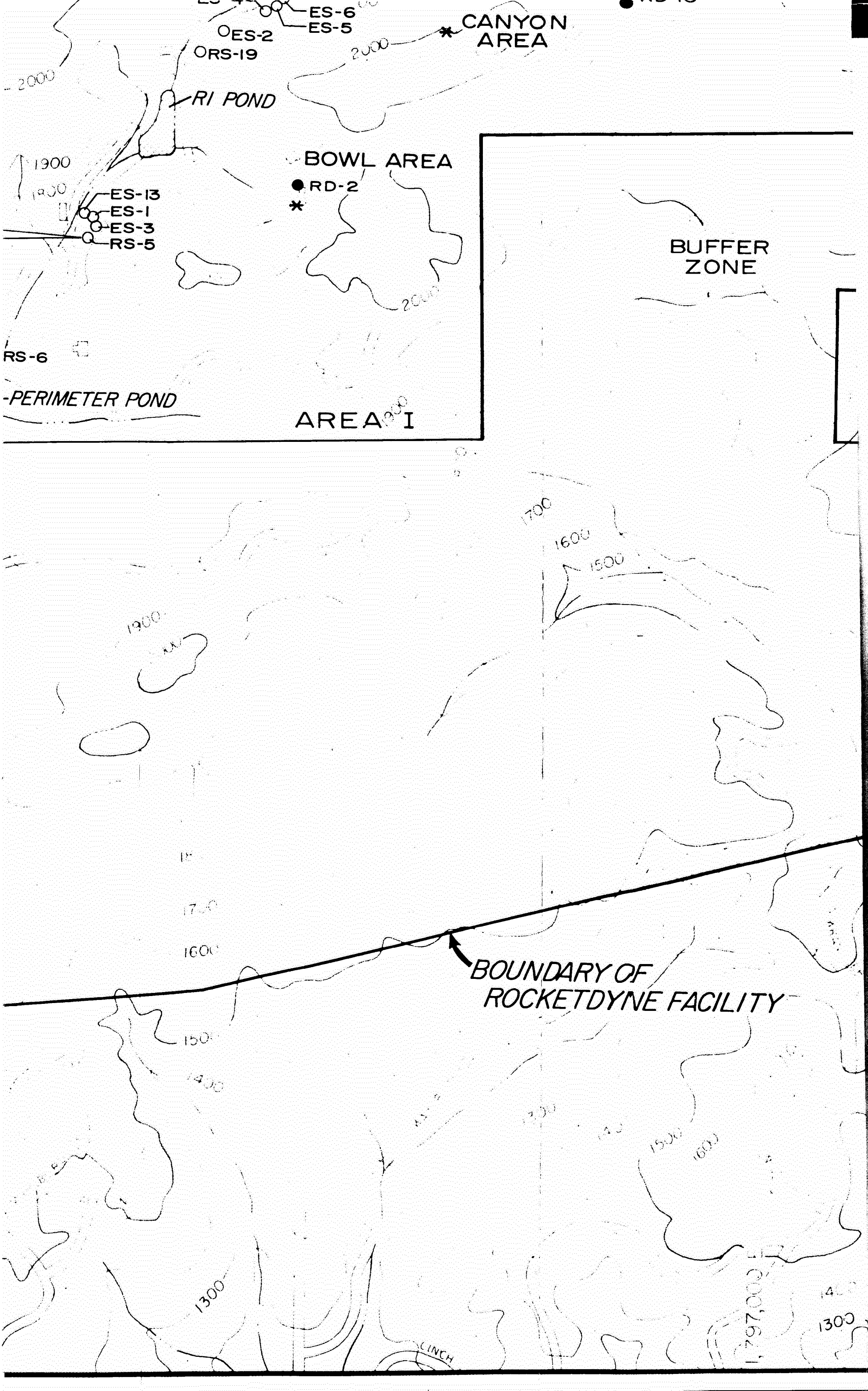
▲ OS-12



BNA08517005



GROSS
GROSS

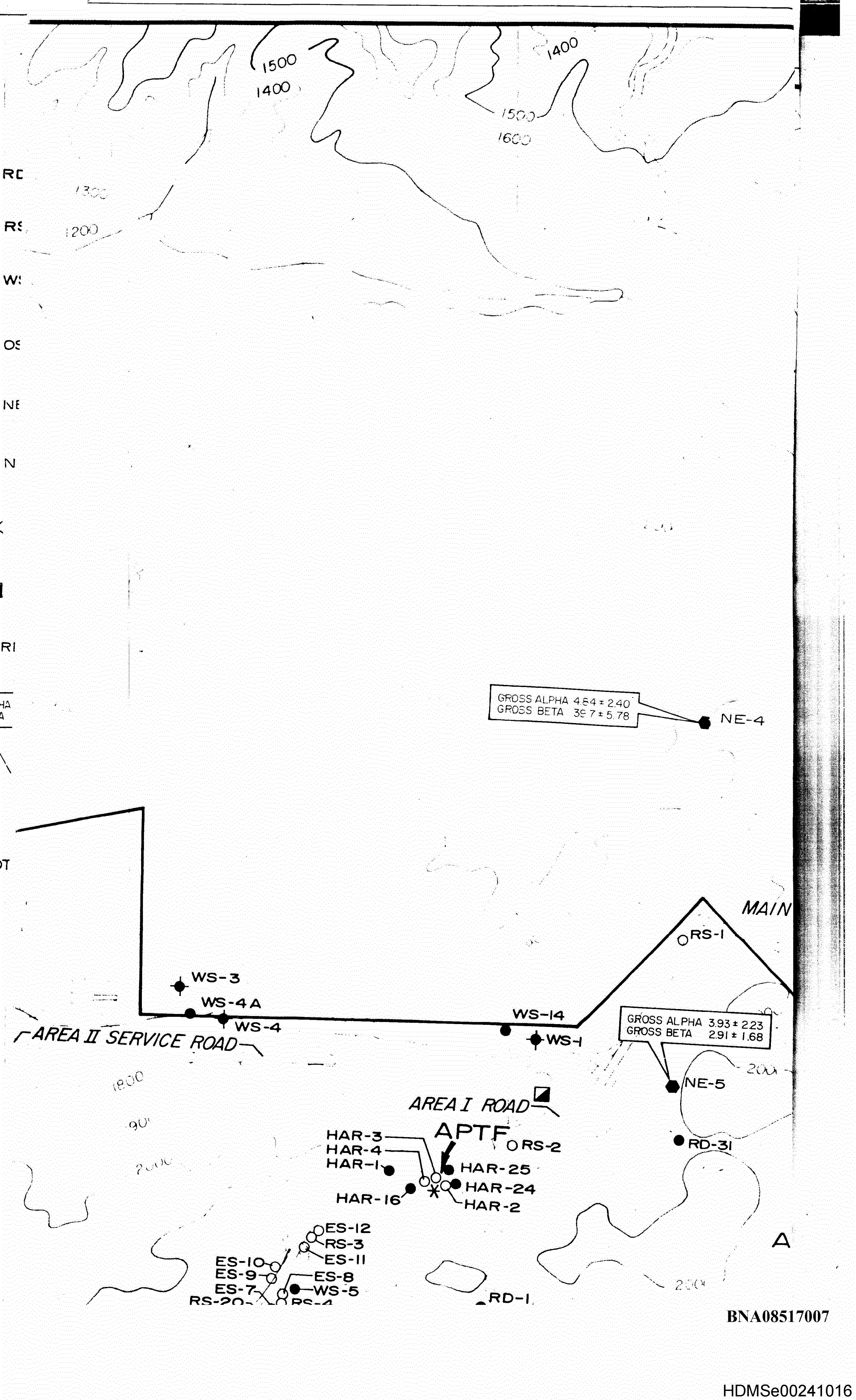


BNA08517006

HDMS00241015

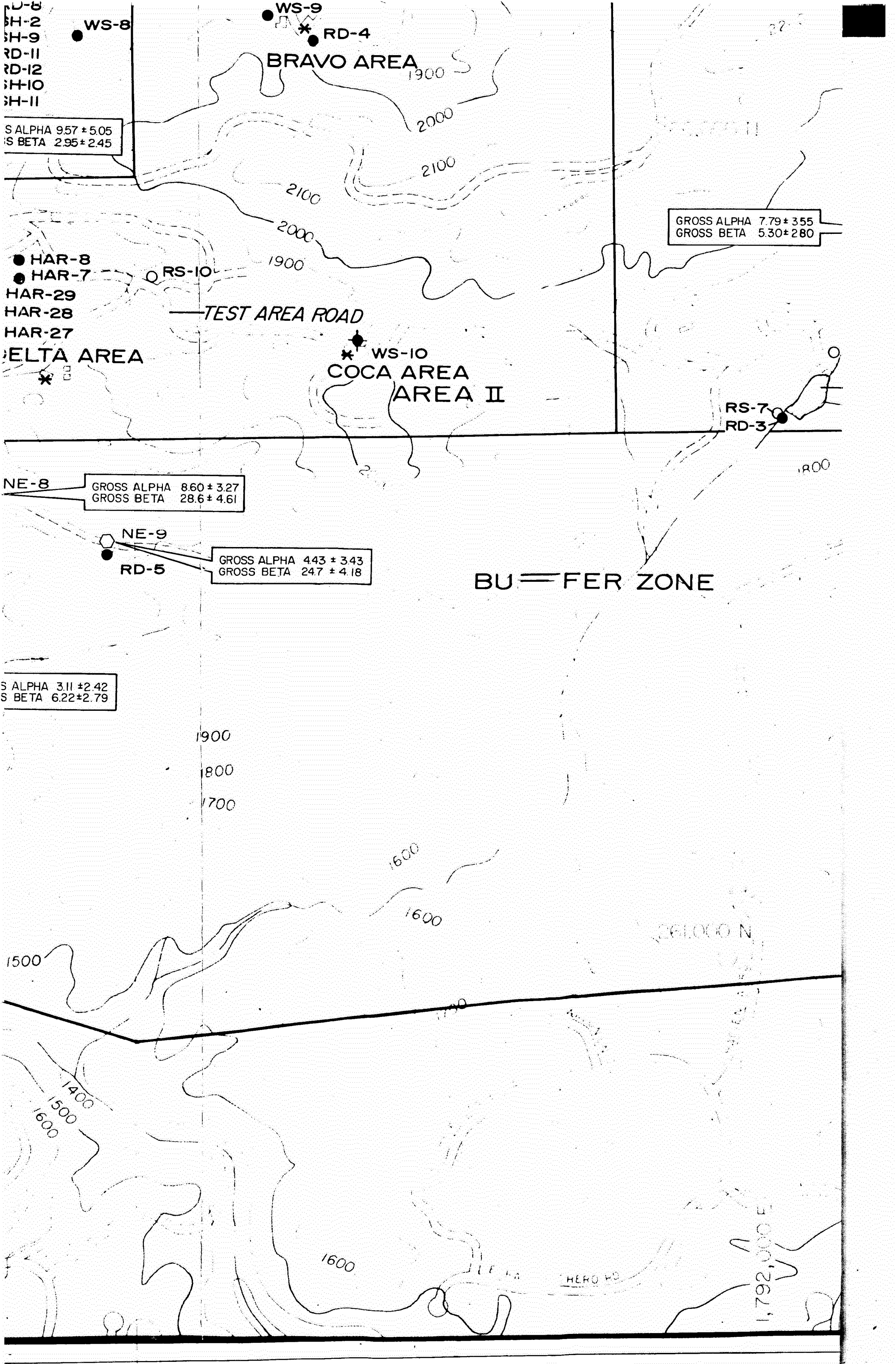
RC
RS
W:
OS
NE
N

RI
HA
A
DT



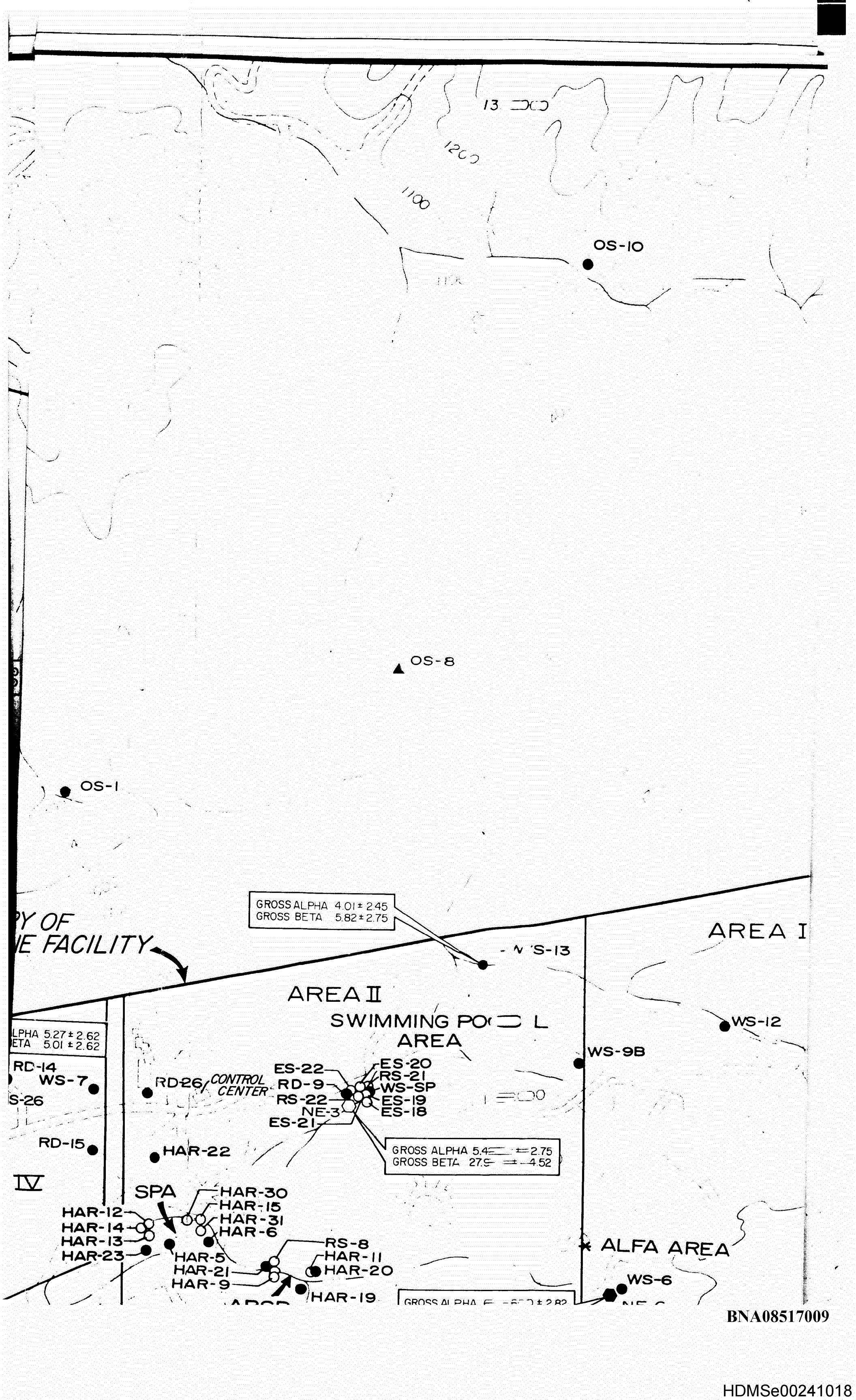
BNA08517007

HDMS00241016



BNA08517008

HDMS00241017



13 000

1200

1100

OS-10

▲ OS-8

● OS-1

RY OF
E FACILITY

GROSS ALPHA 4.01 ± 2.45
GROSS BETA 5.82 ± 2.75

● WS-13

AREA I

AREA II
SWIMMING POOL
AREA

● WS-12

● WS-9B

ALPHA 5.27 ± 2.62
BETA 5.01 ± 2.62

● RD-14
● WS-7
● S-26

● RD-26 CONTROL CENTER

● ES-22 ● ES-20
● RD-9 ● RS-21
● RS-22 ● WS-SP
● NE-3 ● ES-19
● ES-21 ● ES-18

GROSS ALPHA 5.4 ± 2.75
GROSS BETA 27.5 ± 4.52

● HAR-22

IV

SPA

● HAR-12 ● HAR-30
● HAR-14 ● HAR-15
● HAR-13 ● HAR-31
● HAR-23 ● HAR-6
● HAR-5 ● RS-8
● HAR-21 ● HAR-11
● HAR-9 ● HAR-20
● HAR-19

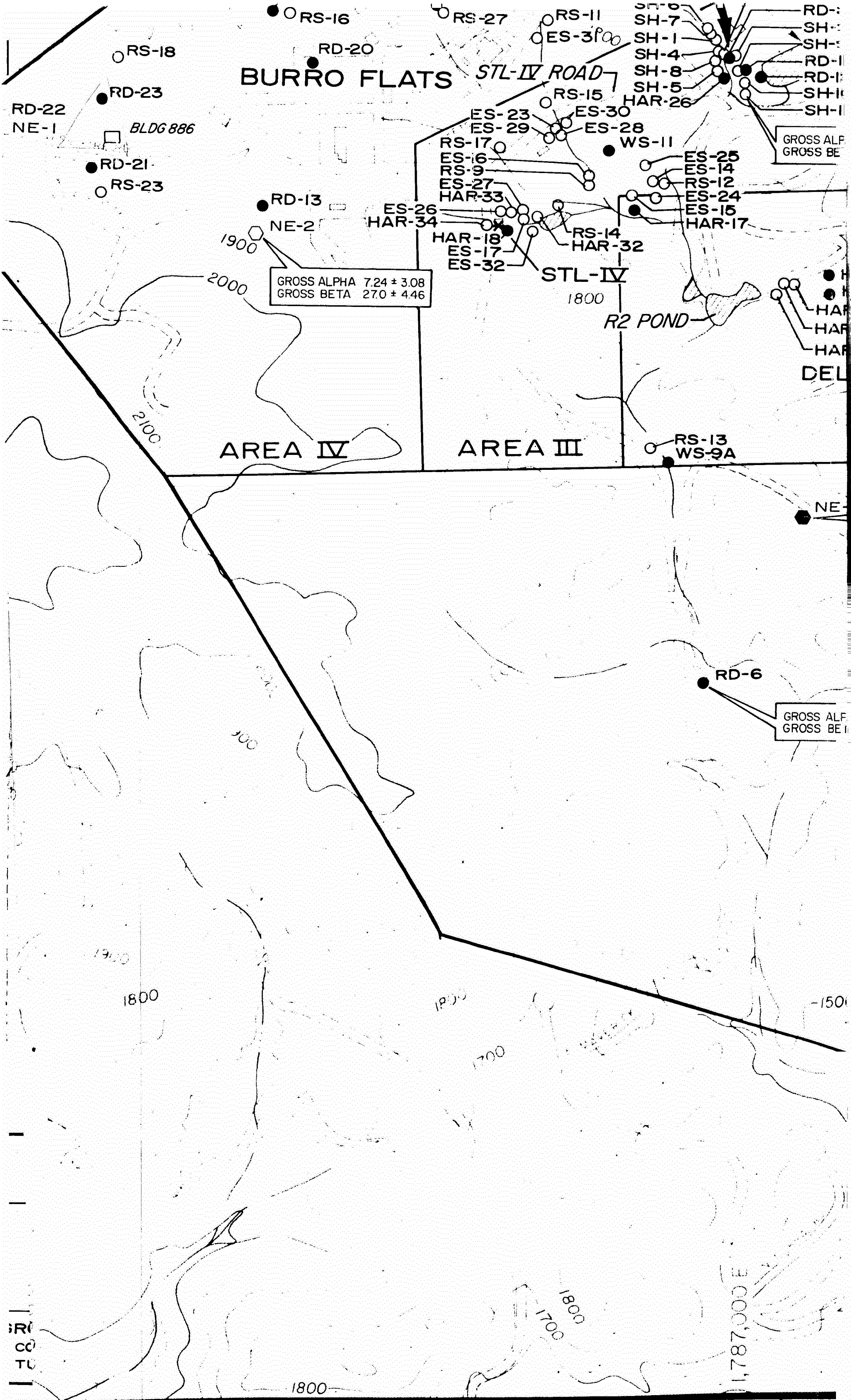
* ALFA AREA

● WS-6

GROSS ALPHA 5.5 ± 2.82

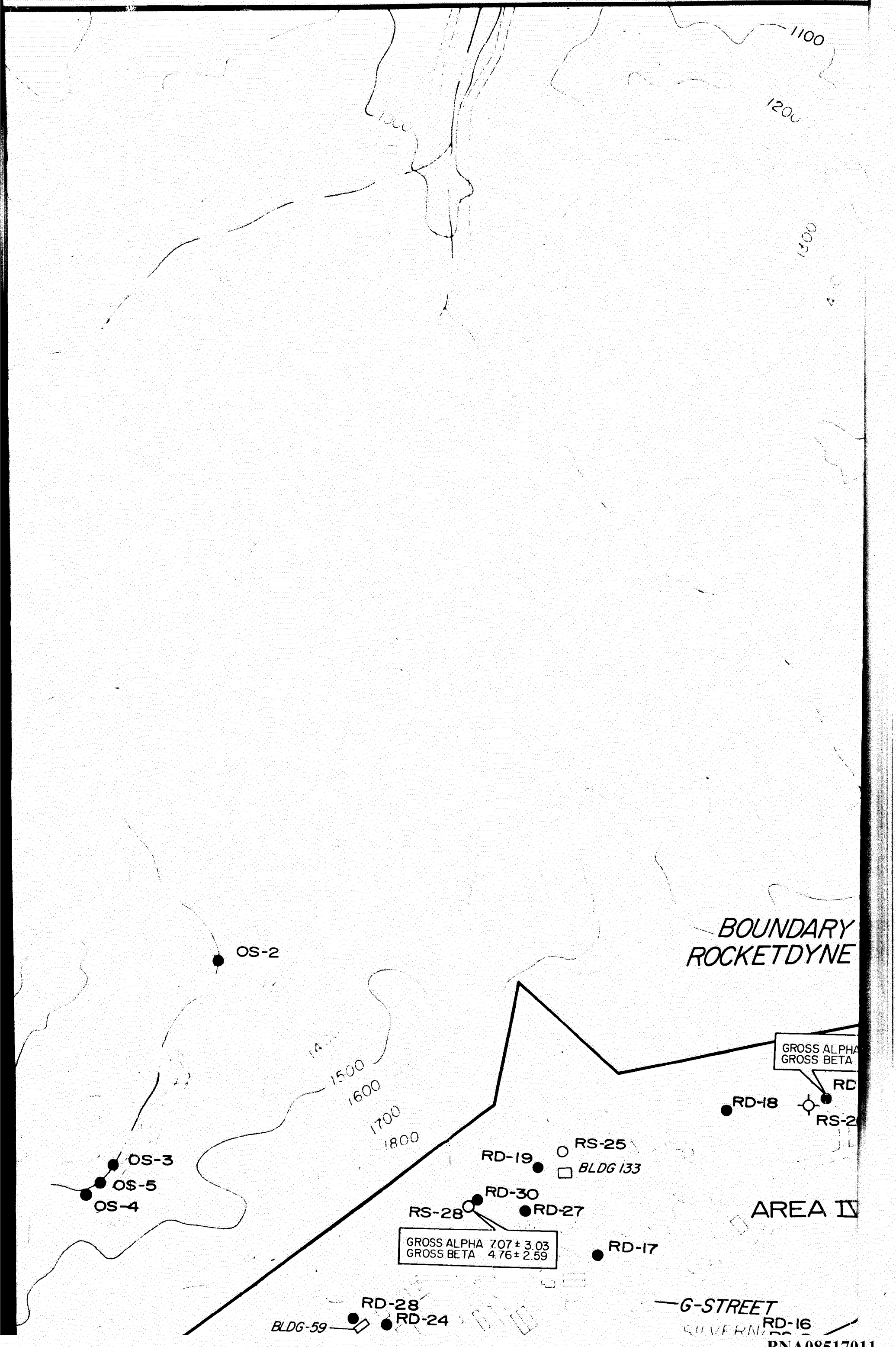
BNA08517009

HDMS00241018



GROSS ALPHA 7.24 ± 3.08
 GROSS BETA 27.0 ± 4.46

GROSS ALF
 GROSS BE I



BOUNDARY
ROCKETDYNE

GROSS ALPHA
GROSS BETA

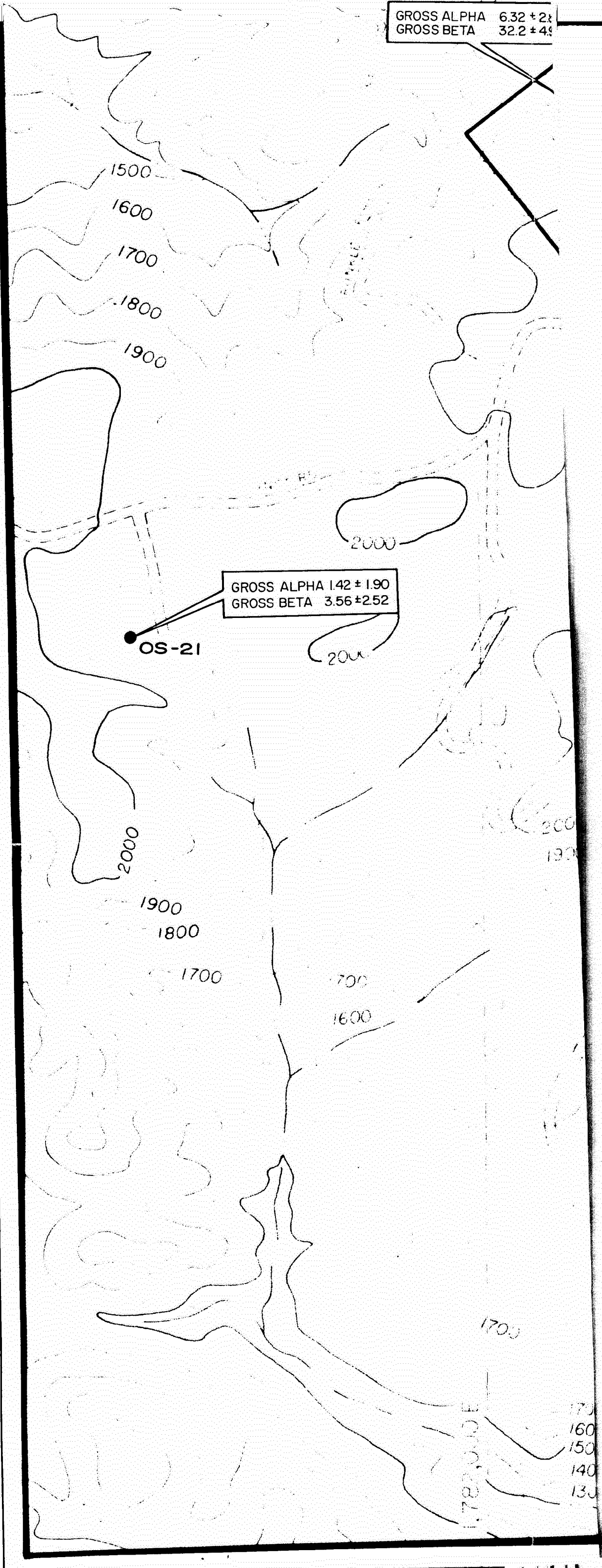
GROSS ALPHA 7.07 ± 3.03
GROSS BETA 4.76 ± 2.59

AREA IV

G-STREET
SILVERN

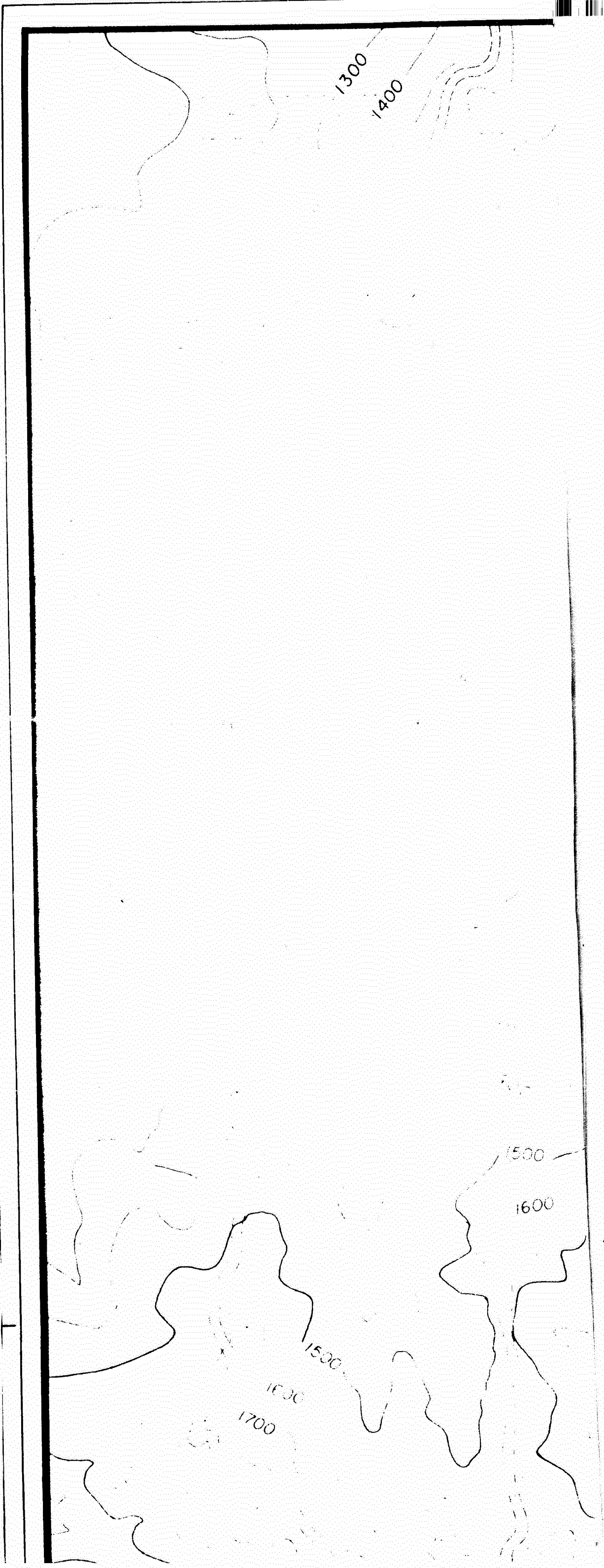
BNA08517011

GROSS ALPHA 6.32 ± 2.8
GROSS BETA 32.2 ± 4.8



BNA08517012

HDMS00241021



BNA08517013

HDMSse00241022