

MALIBU *Surfside* NEWS



ET'S DO LUNCH—A man fishing on the Malibu Pier over the Memorial Day holiday may have struck a bargain with another crafty fisher that if the man agrees to hand over his first good-sized catch, the pelican will make sure no one tries to take the man's prime spot at the rail if he needs to take a biology break. Chalk this close encounter up to another not-so-scientific indication of intelligent inter-species communication.

MSN/Frank Lamonea

FRONT PAGE

Drafting Citywide View Ordinance Could Prove to Be a Thorny Subject

2

NEWS NOTES

Municipal Planning Staff Opposes OK of Second Pot Pharmacy Permit

5

SPOTLIGHT

OBOC Essay Winners Praise Ways Pennies Can Help Change the World

9

ENVIRONMENT

Research Explores Paradigm Tying Local Beachgoer Illness to Pollution

13

ENTERTAINMENT

Malibuite Rides to the Rescue in Yet Another Summer Movie Sequel

17

THIS WEEK

Opinion	4
People	6
Doings	8
Notices	10
Calendar	12
Environment	13
Puzzle	16
Film	18
Real Estate	19
Classifieds	21

Front PAGE

Mayor Puts View Protection Task Force Members on the Defensive

■ Critic of Draft Ordinance Admits He Has Not Read It

Supporters and critics of the municipality's View Protection Task Force showed up at this week's Malibu City Council meeting to sing the praises of the panel or else to second Mayor Andy Stern's public comments bashing the workings of the task force for producing a work product that included an ordinance.

What struck some task force members were Stern's remarks this week when he acknowledged he had not read the proposed law. "I did not look at it," he admitted, but that did not stop the mayor

from criticizing the panel's work. "The depth and detail is not what we are looking for," he added.

Stern said his comments about rejecting the idea that the panel should develop and then recommend a citywide ordinance was consistent with his position on the issue all along.

"None of us voted to draft an ordinance. We wanted you to talk to the public about what they want in an ordinance, to see what the public wanted. My desire is to move it along," the mayor said.

Sam Hall Kaplan, the chair of the task force, insisted that draft-

ing an ordinance was the charge of the council, reminding members of the motion that was approved by the council last year for the task force "to develop a city-wide ordinance."

"The question before us was what type of ordinance would best serve Malibu," Hall Kaplan added.

Task force member Barry Tyerman said the committee was a cross section of the community. "We tried to balance the interests of those seeking views and foliage owners, mindful of the

(Continued on page 11)

Overnight Camping Back in the Spotlight

■ City and Conservancy Square Off Before Coastal Panel

The big showdown between the City of Malibu and the Santa Monica Mountains Conservancy about overnight camping before the California Coastal Commission takes place in Marina Del Rey on June 10.

The competing interests come in the form of two separate requests from Malibu and SMMC officials.

Malibu city officials are seeking a Local Coastal Program amendment that, among other things, would ban overnight camping within the city limits.

The action was taken by Malibu City Council members in reaction to strong opposition from the community to a plan proposed by the Conservancy that included trails connecting several coastal canyons and camping in those canyons.

When the city denied the SMMC's request, the Conservancy submitted an application for what is called an LCPA override to make its own proposal to the Coastal Commission that includes the overnight camping and 32 major annual events in

Ramirez Canyon where the SMMC is headquartered.

Coastal Commission head Peter Douglas has already criticized the city's stance, saying Malibu, like every other community, has an obligation to provide public access and recreation.

Not only has the matter struck a nerve with residents, but the municipality's actions have re-

(Continued on page 16)

Surfing by the Numbers



WAITING GAME—The crowds were out all weekend at popular surf breaks like Surfrider Beach, making for short rides and short tempers. Only the early surfer was likely to score a wave without someone else dropping in.

MSN/Frank Lamonea

Water Board Could Fine Paradise Cove

The Los Angeles Regional Water Quality Control Board is scheduled to meet on June 5 to consider assessing a \$1.6-plus million civil penalty against the Kissel Company, owner of the Paradise Cove Mobile Home Park, for alleged violations of several of the board's orders.

After a public hearing, when the board is expected to receive evidence and take testimony concerning the complaint, the panel is expected to consider whether to agree, modify or rescind the administrative civil complaint in the amount of \$1,652,500.

According to RWQCB documents, the board also may meet in closed session on the matter.

The board's action is being cheered by environmental organizations. "If the regional board approves the fine, it would be a big victory for Santa Monica Bay, as Paradise Cove Beach has routinely received failing grades

(Continued on page 11)

Holiday Colors on Display



CHILLING OUT—It wasn't exactly hot over the holiday weekend, but at least the sun came out in the afternoon on all three days, and beachgoers equipped with coolers, umbrellas, beach towels and bikinis were out in force for the first weekend of Summer.

MSN/Frank Lamonea

County OKs Special 'Red Flag' Precautions for Upper Corral

■ More Protection for Unincorporated Area

Scars from the 2007 wildfire are still visible in upper Corral Canyon above the City of Malibu boundary line. Those grim reminders spurred county action to try to give the unincorporated area an extra measure of protection during red flag alerts.

The Los Angeles County Board of Supervisors, at the behest of Supervisor Zev Yaroslavsky who represents unincorporated Malibu, responded to recommendations made by fire officials because "its geography makes Corral Canyon uniquely vulnerable to hot, dry and windy conditions."

This was exemplified by the Nov. 24, 2007 blaze that occurred after an illegal bonfire started by unauthorized visitors to the part of Malibu Creek State Park directly above the Corral Canyon community spiraled out of control. The blaze destroyed or dam-

aged 98 residences and 45 outbuildings and threatened many more structures.

Among the regulations that will go into effect during a red flag alert are the prohibition of all non-emergency traffic and on-street parking in most areas north of the residential areas along Corral Canyon Road to limit access to the high-fire-danger area when the threat of wildfire is greatest.

The access prohibitions, which took effect immediately upon the board's passage of the motion last week, will be enforced by what is described as "an enhanced Los Angeles County Sheriff's Department presence on all days that have red flag conditions."

The added sheriff's department protection will be funded by Yaroslavsky's ongoing Operation Safe Canyon program.

BY ANNE SOBLE

Council Turns Down Malibu West HOA's Preferred Park Plan

■ Four Members Vote for Workshop-Based Alternative with More Grading and Roadway at Trancas Site



GOLDMAN PLAN—Proponents of the plan designed by local architect Ron Goldman say it would cost \$1 million less than the city plan and eliminate controversial grading.

After wide-ranging debate complete with repeated calls by the mayor for order, a majority of the Malibu City Council this week turned down a plan designed by local architect Ron Goldman for Trancas Canyon Park that was privately com-

missioned by a number of Malibu West residents. Instead, on a 4-1 vote with Councilmember Pamela Conley Ulich dissenting, the council agreed to an alternative plan described as the outcome of a community design workshop on the

continuing controversial park. "I think it is almost criminal," said Conley Ulich, who had earlier lost on her motion to conduct a community workshop to consider the Goldman plan and verify the \$1 million plus cost savings said to be the result of his paired down design.

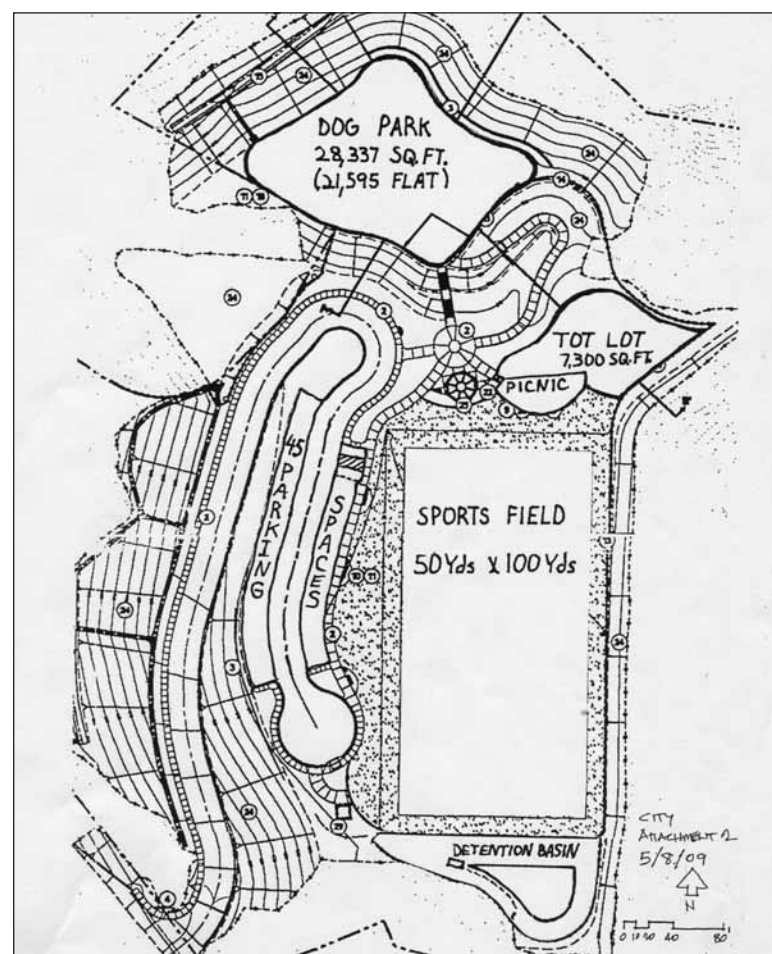
Conley Ulich insisted that during such uncertain economic times, the council should be more concerned about finances. The city does not have the money for the park.

The Conley Ulich motion lost on 3-2 vote when she could only garner Councilmember Jefferson Wagner's vote.

Wagner earlier on had attempted to broker a deal with park supporter Justine Petretti, who was recently appointed to a municipal commission by the council, asking her if she would reach her contacts and ask them to consider the Goldman plan at some sort of workshop. "Enough is enough," said Petretti, who rejected the suggestion and said it was time for the council to make a decision.

That sentiment was echoed by Councilmember Sharon Barovskiy, who said she did not think the Goldman plan had the input of the community.

Mayor Andy Stern agreed. "It wasn't inclusive. Whether it is a good plan or a bad plan. It would be horrible to say, 'Let's go with the Goldman plan without a workshop.' The big problem is with fairness. The people [who hired Goldman] with one point of



ALTERNATIVE PLAN—The council approved this plan, which critics say is a step in the right direction but still involves excessive grading and roadway.

view should have included other people," he said.

Councilmember John Sibert had little to say during much of the meeting. "This is not a Malibu West park. This is a Malibu park," he said in casting a vote for the alternative plan.

Much of the public testimony was from Goldman plan supporters, who said they liked the design because it increased the size of the dog park, eliminated all of the grading from the ridge by relocating the dog park and tot lot to the

(Continued on page 17)

School Board Begins to Pare Budget to Reflect Decreased Income

■ Recent Defeat of State Ballot Measures Regarded as Clear Message from Angry California Voters

Faced with another round of difficult budget decisions just days after Californians rejected ballot initiatives 1A-1E in the state special election, the Santa Monica-Malibu Unified School District board of education, at its May 21 meeting in Santa Monica, voted to increase some class sizes and trim \$700,000 from special education, among other measures to cope with the worsening financial crisis.

"Voters sent a very clear message to us," Santa Monica-Malibu Classroom Teachers Association president Harry Keily told the board. "We have to plan what this district will look like, absent any other revenues. Solutions must be local. We can no longer rely on Sacramento to provide the services we need."

"The governor is suggesting reductions that will impact this current year," assistant superintendent and chief financial officer Jan Maez announced. We're expecting [cuts] in the range of \$344 per average daily attendance," she ex-

plained. That would amount to \$3.8 million, although the district won't know the exact number until the May revise of the state budget is official and there is still the hope that federal stimulus money may help offset the deficit.

However, Maez warned that the district cannot count on federal assistance, and that the deficit will continue to grow unless there are reductions, with the real potential for the deficit to reach \$12.3 million next year and to keep climbing. Maez stated that by the third year the district could be \$23 million "in the hole."

"This is a very difficult situation that we're facing," Maez stated. "There are no sacred cows in budget planning anymore."

The board listened to concerns from parents about the proposed cuts to special education, some expressing concern and confusion over how the district arrived at the proposed reduction amount, but voted in the end to approve realigning the program to eliminate

\$700,000.

The board also approved \$300,000 in cuts from contracted services, as well as a reorganization plan for Santa Monica High



"We can no longer rely on Sacramento to provide the services we need."

School's house system that involves eliminating one of the six houses, despite a strong outcry from Samohi parents.

All Samohi students are assigned to a house, a sort of school within the school, which has its own principal and advisors and of-

fers many of the required courses "in house."

The Samohi reorganization will eliminate a house principal, outreach specialist, administrative assistant, office specialist, security officer and two advisors, as well as cut the services of the houses teacher leaders and librarian for a savings of around \$700,000.

The reductions are anticipated to increase the ratio of students to advisors. Most of the board approved the plan as the least drastic option, however, board member Maria Leon-Vazquez expressed concern, requesting that district staff look to all the district schools to find ways to make reductions, including those in Malibu.

Santa Monica parents and student representatives have complained that Samohi, which is the largest school in the district, is facing the deepest cuts.

All middle and elementary schools in the district will be affected by increased class size increases. The board voted to approve an increase of three stu-

dents per classroom at the K-3 level, for a total of 23:1, an option, staff said, that was made possible by a reduction in penalties at the state level.

Staffing for middle and high schools will be rolled back to 2008-09 levels, with 32:1 in grades 6-12 instead of 31:1. Grades 4-5 will remain at 30:1. District staff has indicated that it anticipates a savings of approximately \$1.9 million for the 2009-10 school year from the class-size increases.

The staff report states that the change will not require the layoff of certificated personnel. However, district parents can expect more difficult budget decisions in the near future.

"Everything can't be a top priority," Keily acknowledged to the board. "When we are honest, eventually we're all going to have to be part of it. [You will have to] do things we and you don't want to. At least we aren't one of those districts that are insolvent."

BY SUZANNE GULDIMANN

Town FORUM

LETTERS to the EDITOR MEMBERSHIP

Editor:

I did some research on the Malibu Township Council. Long before cityhood, the MTC were the "watchdogs" of Malibu. They wanted to keep Malibu exactly as it was. Not only didn't that work, but their efforts often backfired with unintended consequences, such as fighting a bitter battle to prevent six home sites and winding up with 38 condos instead. It seems personal agendas have alienated MTC, leading the community to question MTC's purpose and integrity.

If you look at the list of board members on their website, it appears to be a political pack of the old Keller/Van Horn group, not a 501c3, which by law must make their tax and non-profit documents public. They, however, refuse to disclose them.

Rules and regulations do not seem to apply to the MTC. Board members are representing districts that they do not live in. The president of MTC (currently suing the city against all its current park projects) who doesn't even live in incorporated Malibu, sits on Malibu's Parks and Recreation Commission as an ex-officio member, ironically the very same commission that voted in favor of building Trancas Park.

Board members also include a planning commissioner for the City of Malibu and a reporter for the Malibu Surfside News. Another member is presently making a Malibu Park family's life miserable over horse manure and false accusations as you can read in the letters in several recent papers. MTC's board seems to be working within several conflicts of interests.

As for the "candidate forums" Steve Uhring refers to in last week's paper, their low attendance is indicative of the decline of MTC.

Perhaps the philosophy of "No Growth" is simply not feasible in a changing world. Change is inevitable and is not necessarily a dirty word. Change can be thoughtful and constructive. Change is needed as the needs of a community change. Change can clean water and get rid of septic tanks. Change can keep a community child friendly so that its children can grow up here and live here as adults. Change can build parks so that we need fewer rehab centers.

Julia Goldberg

POSITIONS

Editor:

The Malibu Township Council has decided that, when they don't like something that other people voted for, they will sue using an anonymous "rich friend's" money. That is a sad way to promote a position.

The Trancas Park is a case in point. There were 29 meetings and workshops before the plan for Trancas Park was voted on. Along comes MTC in the final hour, making a desperate last attempt to derail a much needed and desired pocket park for the western end of Malibu.

The second case is the Trancas Market. They are trying to paint the developer as a greedy Simon Legree. They don't allow for the truth, which is that every developer is not the devil, any more than every lawyer, or doctor, or accountant, is.

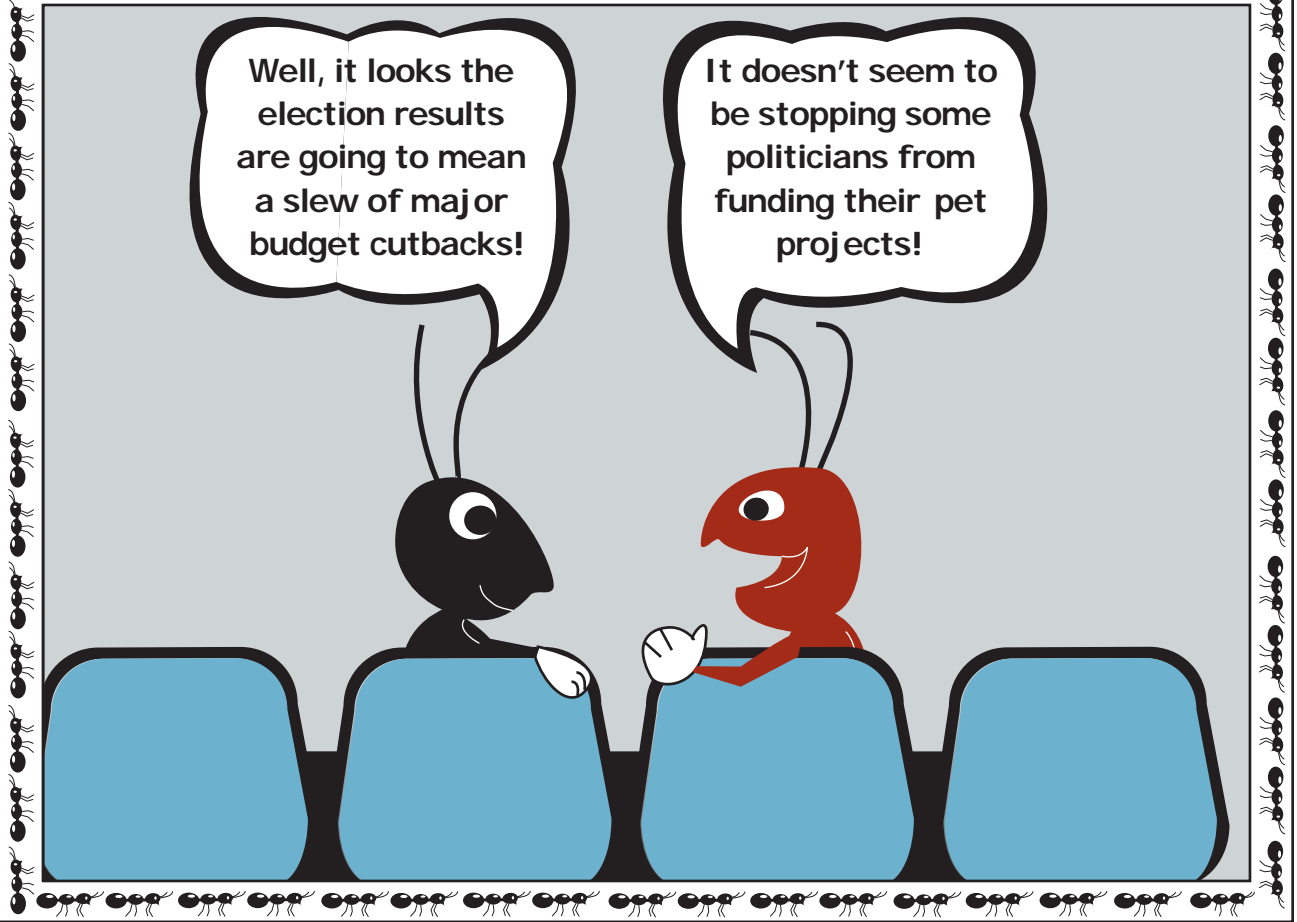
Dan Bercu is a family man who lives and is bringing up his kids in this community. He wants to design a Napa-barn-style "green" shopping center, only adding 30 percent more retail, including two restaurants. If the MTC drives him away, he could wind up selling the land to a hotel developer who does not live in Malibu, and it will serve them right.

Malibu cannot continue to survive MTC's refusal to abide by the votes of the majority. Most of the items that the MTC are against are not going to stop the coyotes from howling, or whales and dolphins from jumping.

However, they are going to stop the sounds of kids playing, families dining and shopping locally, keep people

(Letters are continued on page 10)

APOLITICAL ANTICS



Publisher's NOTEBOOK

Close Pre-Budget Loopholes First

Winston Churchill would probably chomp on his cigar and growl as his oft-cited quote about the Royal Air Force's role in the Battle of Britain in 1940: "Never in the field of human conflict was so much owed by so many to so few" has been reconfigured in various permutations to describe last week's California special election results.

Exempli gratia: Never have so few voters had a major impact on not only so many Californians, but also on so many elected and appointed officials, especially those who have been part of the political landscape since before the term-limits era.

Only about one-fourth of eligible voters went to the polls, but they were of a decidedly like mind. Even the often noteworthy differences between Northern and Southern Californians fell by the wayside as those casting ballots thumbed their noses at the governor, both houses of the legislature, the lobbyists and anyone else willing to publicly align themselves with state government.

A resounding majority of the voters in every county in California rejected Propositions 1A (the tax extension/rainy day reserve measure), 1C (borrowing from state lottery funds), 1D (borrowing from children's development funds) and 1E (borrowing from mental health programs). A majority in all counties also voted for 1F, which froze elected officials' pay in lean budget years. Three counties short of unanimity voted against 1B, which would have required the state to start paying back over \$9 billion in funds to public schools in two years.

The governor, who was not even in California on Election Day (some media pundits say he is not a registered absentee voter and are asking whether he passed on the election altogether), and many legislators now are threatening the voters with retribu-

tion for their attempt to actually have a say in the policy process (in a format that the governor himself devised and expected to breeze to victory).

All efforts at a "teach-the-voters-a-lesson" backlash must be challenged. The state's serious financial flaws are not in needed expenditures but in special interest loopholes that are built into the budgetary process before dollars are ever allocated for such critical priorities as education, health services, firefighting, infrastructure maintenance and so on. Sacramento can try to pretend that the current budget has been pared to the bone, but corporate lobbyists and other big campaign donors have been immune from the cutting process for too long.

ANNE SOBLE

The Malibu Surfside News

(ISSN—0191-7307)

The Malibu Surfside News (Malibu News) is a weekly community newspaper and related website serving the greater Malibu, Los Angeles County area that is published by Malibu News Enterprises, Inc. It has been adjudicated a newspaper of general circulation, qualified to publish legal notices by the Superior Court of Los Angeles County, Decree No. C149959, May 3, 1976. The newspaper and website are copyrighted. All rights reserved. No reproduction or use of contents is permitted without express written authorization and negotiation of terms. The annual print subscription rate for Malibu zip codes is \$50, other U.S. area subscriptions are \$95 a year, and out-of-the-country subscriptions are \$150 a year.

EDITOR and PUBLISHER—ANNE C. S. SOBLE
CITY BUREAU—BILL KOENEKER
FEATURE SECTIONS—ROBBY MAZZA
PRODUCTION—GEORGE HAUPTMAN
SUZANNE GULDIMANN

Editorial/Production Contributors—Beverly Gosnell, Frank Lamonea, James Erickson, Jeremy Walker, Dick Callahan, Francine Brokaw, Ralfee Finn, Nicole Kliest, Kathleen Florida
Newspaper Offices:
28990 Pacific Coast Highway
Malibu, CA 90265

Mailing Address: P.O. Box 903, Malibu, CA 90265
Telephones: 310-457-2112-457-4235-457-NEWS
FAX: 310-457-9908

Website: <http://www.malibusurfsidenews.com>
E-mail: Editor—editor@malibusurfsidenews.com
News—news@malibusurfsidenews.com
Advertising—ads@malibusurfsidenews.com

Periodicals Postage Paid at Malibu, CA 90265 Postmaster: Send address changes to: The Malibu Surfside News, P.O. Box 903, Malibu, CA 90265

LETTERS POLICY

The Malibu Surfside News welcomes expressions of opinion and other commentary on communitywide concerns for consideration as letters to the editor. These communications should, ideally speaking, be typeset, double-spaced, and not exceed 250 words in length. E-mail and Mac CDs/disks are preferred. All communications must be signed and include a return address and daytime telephone number, but the author may request that his or her name be withheld and indicate the reason for the request. Priority is given to exclusive communications that substantively address key local public policy issues. All communications may be edited to meet space or other publication constraints. Letters selected for printing do not necessarily reflect the opinion of the publisher or others associated with this newspaper.

Planning Staff Says No to Pot Pharmacy

The Malibu Planning Commission is being asked by its planning staff to deny a permit for a pot pharmacy currently in operation in the city because it is too close to a park.

The owners and operators of Green Angel Collective, a medical marijuana dispensary, want the planning panel at its June 2 meeting to issue a Conditional Use Permit for the business, which has been operating several years and is located in the Old Courthouse Square Plaza.

Malibu's ordinance requires that a pot pharmacy shall "not be located within a 1000 feet radius of a church, temple, or other places used primarily for religious worship, or a playground, park, library, licensed child day care facility, nursery school or school."

"The Green Angel Collective proposes to operate in its existing location which is located within 1000 feet of the Las Flores Creek Park," wrote the

city's Associate Planner Ha Ly.

However, Green Angel's attorney, Steven Schectman, argues that there is no way to get to the park by vehicle, bicycle or on foot from the facility to the park that is not more than a 1000 feet.

"The applicants are aware that a newly opened park that contains a playground area that may be 'as a bird flies' within a 1000 feet circumference from the subject premises, however, the use of the circumference 'as a bird flies' method of measure is not relevant in order to achieve the clear intent and purpose of the specific location and development standards," wrote Schectman.

The attorney went on to say that the city's standards are for the purpose of preventing or limiting contact between citizens using any of the parks or churches or other locations and any of the services (Continued on page 9)

Dolphins Also Enjoy Holiday Outings



SWIM TEAM—Humans weren't the only ones enjoying the ocean over the holiday weekend. Malibu's resident dolphins were out enjoying the afternoon sun and surf, offering observant beachgoers a glimpse of snouts, tails, fins and sleek, torpedo-shaped forms as the marine mammals played in the surf just out of reach of human swimmers at Zuma Beach.

MSN Photos/Jessica Dillon



WHEN IT COMES TO JOINT REPLACEMENT, OUR ORTHOPEDIC SURGEONS HAVE STARTED A MOVEMENT.

Breakthrough technologies. Skilled surgeons. All with one outcome in mind: To get you back on your feet.

At Saint John's, our orthopedic surgeons have invented and perfected some of the world's advanced technology and techniques. The results are faster recovery times, maximum movement, less invasive procedures and fewer complications.

This includes developing special robotic equipment to increase surgical precision, insure better outcomes and use the same procedures offered only at dedicated orthopedic institutes.

Our physicians' skill is complemented by our highly skilled nurses, technicians and the other dedicated members of the operating team.

To learn more about our doctors, their many breakthroughs and the inspired care we offer, visit www.stjohns.org/ortho

Breakthrough Medicine. Inspired Healing.SM



Saint John's Health Center

1328 22nd Street, Santa Monica, CA
1-800-ST-JOHNS www.stjohns.org

Longtime Local Surf Band Ventures Into Different Sounds

While maintaining their roots in surf music, local band The Malibooz is venturing into different sounds—the “British Invasion” and rap. Formed by native New Yorkers John Zambetti and Grammy Award nominee Walter Egan, the Malibooz have been honing their surf sound for more than 40 years.

Zambetti has lived in Malibu for over 30 years and is active in local activities, including planning and implementing the Annual Christmas Woodie Parade in Malibu for the last five years. Egan and he write all the songs for the band.

In the works these days is a British Invasion album, which will feature some of the big names from the 1960s performing in what Zambetti describes as cameo performances. The idea for the CD, which is due out later this year, came to Zambetti in 2004, after The Malibooz celebrated its 40th reunion.

According to Zambetti, the priest at his alma mater, Loyola High School in New York, was celebrating his 80th birthday and wanted the original Malibooz to perform at the party.

“We decided to do our old set list from 1964,” said Zambetti. “I was going through it and there were a lot of Kinks, Animals, Searchers and Rolling Stones. We also had a lot of original songs that were written in the British Invasion style.”

“While working on the album, we thought we’d like to have some of our old friends we’ve met during the years from the 1960’s sing on the album,” said Zambetti. “The Quarry Men [the band that George Harrison, John Lennon and Paul McCartney joined before forming the Beatles] were in town so they came over and sang background on one of my songs. “The list of ‘cameos.’ includes 1960s luminaries Donovan, Spencer Davis, David Carr and Ian Whitcomb. Zambetti is also hoping for appearances by Eric Burdon and Peter Gordon. There will also be an instrumental track featuring members of instrumental bands the Ventures and the British band the Shadows which will play a Zambetti work, “Venture into the Shadows.”

Also involved are Andrew Loog Oldham, producer of early Rolling Stone albums, who will



IN CONCERT—The Malibooz in concert in the Lancaster Performing Arts Center. Pictured left to right, Scott Monahan, Martin Fera, David Chamberlain, founders John Zambetti and Walter Egan, and back-up singers Janis Liebhart and Tyana Parr.

Will Thompson

produce one of the tracks, and Gered Mankowitz who will shoot the album cover. Mankowitz photographed early album covers for Jimi Hendrix and the Rolling Stones, among others.

Staying true to the original British format, the album will feature 14 tracks—all originals, many of which Zambetti characterizes as “homages to different British Invasion songs.” the original British albums had 14 songs, but the number was cut to 10 in the United States because you only got paid for 10,” said Zambetti.

Another aspect of the CD that The Malibooz fans can look forward to is the packaging design, which Zambetti wants to keep a surprise. “We really take a lot of pride in our packaging,” said Zambetti, who designs the packaging. Twice the band has made it to the Grammy semi-finals in “Best Packaging,” first for the 2002 release “Beach Access” which featured sea shells in the case, and then in 2005 for “The WVRV Sessions ’65,” in which the packaging is a reproduction of the tape of the original sessions, including a piece of recording tape in the case’s spine.

The title of the album, “The Queens’ English Sound” has a story all its own, according to Zambetti. The band rose early, and, after playing at the 1965 Worlds’ Fair, they were approached by the emcee of the event. “He said ‘I see you guys do everything from surf music to the English sound, can you tell me what the difference is?’ I gave a little explanation,

and thought it was funny the guy called it the ‘English Sound’ because everybody called it the ‘British Invasion.’” Zambetti said. “We thought it would be funny the call the album ‘The English Sound’ and Walter is originally from Forest Hills in Queens, New York, so we decided to call it ‘The Queens’ English Sound.’”

On another musical front, rapper Eminem is using a Malibooz song on his latest CD, which was released earlier this month. “Hot Summer Nights” is the inspiration for the song, “We Made You” on “Relapse.”

“A month ago, Walter got a call from EMI Music that Eminem had taken “Hot Summer Nights” as inspiration for a new song and had already filmed the video for it. They didn’t give us very much leverage, but I was impressed that they had the honesty to come to us, because the reality is that none of us listen to rap music, so we never would have heard the record, I never would have known anything about it,” laughed Zambetti. “They took chord changes and beat and put new words to it and gave us 20 percent off the top.”

“What’s ironic is that it’s a song that was written in 1976 or ’77,” he said, adding, “We like the idea of Eminem and Dr. Dre (the album’s producer) sitting around the pool listening to The Malibooz, it’s kind of exciting.”

As high schoolers in New York, Zambetti and Egan’s music was inspired by the “surf sound” of bands including the Beach Boys. The band was an immediate

success, playing five songs—a mix of surf style and British Invasion rock at the 1965 World’s Fair, the new York State Pavilion and then as part of the first color TV broadcast live from the RCA Pavilion.

With the British Invasion,



CLASSICS—Members of The Quarry Men Colin Hanton, Rodney Davis and Len Garry in John Zambetti’s home studio record for the upcoming Malibooz album, “The Queens’ English Sound.” George Harrison, John Lennon and Paul McCartney were members of the Quarry Men before forming the Beatles.

of the 1960’s, surf music was displaced by the emergence of bands like the Beatles and the Rolling Stones. After graduation and the start of college, The Malibooz members broke up and three of them, Zambetti, Egan and drummer Tom Scarp reformed into Sageworth, finding success in the Washington D.C. area.

Zambetti moved to California in 1976 to join Egan who was already living here and formed his own band the Johnny Z Band which played the local club circuit opening for many acts including the Police and the Motels. The band was so popular it was named one of the top L.A. bands of 1980 by Music

Connection Magazine.

The Malibooz picked up again in 1980 when Egan decided to use the Malibooz song “Surfin’ and Drivin’” on his first solo album, “Fundamental Roll.”

“Lindsey Buckingham (the album’s producer) was a big fan of surf music, so he put it on the album” said Zambetti. “The guys at Rhino Records heard it and said ‘Walt, why do you have this surf song on your album?’ He told them about The Malibooz and how Stevie (Nicks) and Lindsey Buckingham loved us.” they then came to us to record an album.

In 1981, with Zambetti and Egan at the helm, three new members, David Chamberlain, Scott Monahan and Bruce Gary, (Gary died in 2006 and was replaced by the band’s current drummer Martin Fera) signed on and the band released their first album “Malibooz Rule.” They were soon approached by Rhino Records about doing a reunion album of their original style of surf music.

“During the ‘British

Indeed, about 60 of their songs, have been used in TV and film productions, including “Step Into Liquid,” the 1997 parody “Plump Fiction” and “An Alan Smithee Film, Burn Hollywood Burn.” In fact, “Goin’ to Malibu,” a song written by Zambetti when he was 13, was the theme song for the MTV Malibu Beach House in 1996.

Perhaps the CD that is most personal to Zambetti is “Living Water (A Surfer’s Mass).” The inspiration came to him in the summer of 1992 while vacationing with family and friends in France. “As we drove along, every time I would look out at the ocean, I’d hear some of the Mass prayers as surf music. I began writing it down,” he wrote on The Malibooz website.

Zambetti, a 30-year voting member of the Grammy Awards, also found another reason for writing the Mass. “I’ve been trying to get them to have a surf music category,” he said. “Surf music is American music and they don’t really acknowledge it. I thought, ‘well sometimes people don’t really understand surf music and they write it off as not being that interesting, so for composers a Mass was always a huge form for them to crystallize their ideas of their musical identity.’”

It really almost had nothing to do with religion. People like Stravinsky and Leonard Bernstein did Masses, but the mass has a format for music that’s kind of the apex of musical thought, so I thought if I did a Mass in surf music style, it would lend a validity in the ways the Grammys would understand.”

The undertaking was a difficult one, said Zambetti, but the end result received high praise from both secular and non secular listeners.

“The idea of the album was really to explore the spirituality of the ocean, because of the ocean, because it’s so huge and when you emerge yourself in the ocean you can’t help but feel that you’re part of this huge energy,” he said. “And, as you learn in surfing, you can’t fight the wave—it’s got way too much power. It’s only when you surrender to the wave you ride it. You can’t fight a wave, you’ve got to become one with it. I explored the spiritual aspect of having to surrender in your own life.”

BY ROBBY MAZZA

Visitors Enjoy the Wishtoyo Foundation's 'Working Chumash Village'



HERITAGE—Wishtoyo Foundation executive director Mati Waiya and Chumash elder Charlie Cooke examine a tomol built by Matt Ward at an open house at the foundation's Nicholas Canyon Beach Chumash Village; the entrance to an ap; and Waiya discussing a red-tailed hawk feather skirt, which is part of a Chumash ceremonial dance. Only Native Americans are authorized to own wild bird feathers like these.

MSN Photos/Frank Lamonea

■ ■ ■

Kitchen Galleria

■ ■ ■

SHOWROOM · CONSTRUCTION

Your style... Your way!

Inspiration . Design . Distinction

30941 Agoura Road
Suite 320
Westlake Village
Phone 818.879.7000
Ca. Lic# 675935

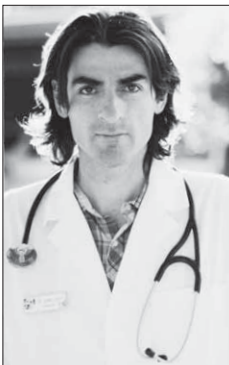
	101 Freeway		
Lindero Cyn.		Reyes Adobe	
	Agoura Road		

MALIBU VETERINARY CLINIC

At Point Dume for 21 years

Malibu Veterinary Clinic is pleased to announce that DR. JOHN LUPO is taking ownership, offering:

- Full medical and surgical services
- Nutritional/Diet formulations and consults
- Expanded hours (walk-ins welcome), and house calls
- After hours emergency services
- Boarding with veterinary supervision (cats and small dogs)
- Grooming by Jose Luis (previously grooming at Pet Headquarters)



28990 Pacific Coast Highway (Pt. Dume Professional Center at Kanan and PCH)

310-457-6453
(24 hours)

We Need Malibu's Help!



Screech is now almost fifteen days old and gaining strength. He is one of many birds being cared for by Valley Wildlife Care. On one day alone last week, a baby great horned owl, five baby redbill hawks, three baby barn owls, a just-hatched woodpecker, two baby mockingbirds and five baby sparrows arrived; and two more birds were on the way.

Valley Wildlife Care is a 501 (C) (3) not-for-profit organization. We take in roughly 2000 orphaned, injured and ill wild birds and mammals each year. Our volunteers work tirelessly around the clock. There is no government funding to assist with the thousands of animals that come to us each year. We rely solely on the donations of caring people to operate. We are in desperate need of more incubators and without the financial assistance of the animal loving community, we will not be able to purchase incubators. Incubators house hundreds of orphaned and injured animals and we can only accommodate as many orphaned babies as we have incubator room. If you are able to be a "gold sponsor" and purchase an incubator for us, please contact us via e-mail at valleywildlife@aim.com Please visit our web site at www.valleywildlifecare.org

To assist Valley Wildlife Care, please send your tax-deductible donation to:

Valley Wildlife Care
6520 Platt Ave #203
West Hills, CA 91307

DoINGS

New Store Holds Fundraiser



BIG NIGHT—J. Crew, which recently opened in the Malibu Lumber Yard, held a private event to celebrate its opening. A portion of the evenings proceeds benefitted the Malibu Foundation for Youth and Families. Pictured above, Boys and Girls Club members Amanda Waters, Karen Sanchez, Marie Vazelakis and Helena Vazelakis are all smiles; below, Pamela Spiegel, Mary O'Leary and Kasey Earnest enjoy the event.

MSN/Photos/Frank Lamonea



Malibu Green Machine Meets First Deadline



CELEBRATION—The Malibu Green Machine held a ribbon-cutting last week in recognition of completion of the first phase of its PCH Enhancement Project on time and on budget. Pictured above are Richard Sperber, president/CEO of ValleyCrest Companies; Malibu Mayor Andy Stern; Burton Sperber, founder, chair and CEO of ValleyCrest; Steve Soboroff, Malibu Green Machine fundraising chair; David Reznick, Malibu Bay Company president; actor Kelsey Grammer and Jo Giese, Malibu Green Machine founder and president.

Veronica Skin and Body Raises Money for Operation Smile



HELPING OTHERS—Veronica Barton Schwartz, owner of Veronica Skin and Body Center, recently held a fundraiser for Operation Smile as well as the opening of the Veronica Tai Chi and Yoga Studio and Beautologie. The event was successful and many local luminaries were in attendance. Pictured above with Schwartz are Drs. Milan Shah and Darshan Shah. Veronica's Skin and Beauty Care Center is located at 24955 Pacific Coast Hwy., Suite B101. For more information, call 310-456-8883.

Optimists Host Lawmakers



RECOGNITION—The Malibu Optimist Club recently held its Respect for Law Week, which honored various branches of the legal system. Representatives from the district attorney and public defender's offices, the Malibu Court and Pepperdine Law School attended the event. Pictured above, Malibu Optimist president Al Cowart event chair and Optimist Sheldon Lodmer present a donation to Pepperdine Law School Dean Kenneth Starr for the University's Moot Court Program.

Samohi to Hold All Class Picnic on Saturday

The 20th Annual Samohi All-Class Picnic is set for Saturday, May 20 from 11 a.m. to 2 p.m. in the school quad.

Participants can bring their own picnics or buy barbecued hamburger and hot dog meals and cold drinks at the event.

There will be lots to do at the picnic. According to a press release, one can "check out the Greek,

Vikes Inn, Hall of Fame and trophy memorabilia display, visit the newly renovated Barnum Hall and watch the preparation for the Venice/Billy Idol concert later that evening."

Registration begins at 10 a.m. and free parking will be available at 7th St. and Michigan Ave. For more information, call 310-396-7027 or email jljaffe@earthlink.net.

Other Malibu News...



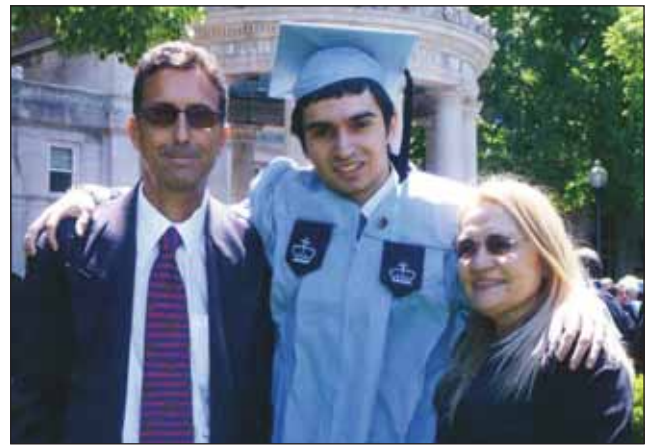
INSTRUCTION—Malibuite Lee O'Keefe Hardy will be teaching Creative Art E11 Classes for Santa Monica Emeritus College in Malibu on Thursday mornings at 9:30 a.m. beginning June 22. For more information, call 310-434-4306.

* * *



ON THEIR WAY—Malibu High students sophomore Alissa Myer and senior Rebecca Gray, who are members of the Jr. Philharmonic, will be performing at Walt Disney Concert Hall on June 3.

* * *



BIG DAY—Martin Salas, MHS class of 2005, recently graduated with honors from Columbia University where he majored in history and philosophy. He plans to attend law school in the fall of 2010. Salas is pictured above with his parents Richard Salas and Zuni Pena.

* * *



REMEMBRANCE—Local Youth attend a parade of colors at the Fleet Reserve 120 Branch Home in Oxnard in honor of fallen troops on Memorial Day. Serving with the Navy League Cadet Corps, Harrison Strange, Macon McIntyre and Madison McIntyre, Sea Cadets of the Navel Base Ventura County, Point Mugu, stand at ease with other Minutemen during the Wreath Ceremony.

One Book One City Malibu Essay Winners Announced

This year's Choice for One Book One City Malibu was Greg Mortenson's "Three Cups of Tea, One Man's Mission to Promote Peace—One School at a Time."

The winners of the annual essay contest are:

Three Cups of Tea

I use to say "Find a penny pick it up and then all day you'll have good luck!" But now I say "Find a penny pick it up, bring it to school and make a buck. Collect some more, twenty-five bucks might make a door."

In time you'll see a penny can be much more than something shiny on the floor. What can a penny buy, nothing you see, ten cents not much not even a hundred and three! But guess what? Keep collecting some more, you'll see, that pennies can make something in the world like me.

Crystal Graham, age 9

Greg Mortenson

It all started in fourth grade when a mother came in and introduced Pennies for Peace to us. I was so inspired by this little video about Greg Mortenson and his journey to K2. Even though he did not succeed to get his sister's amber necklace on the summit of K2, he did a much more wonderful thing that his sister would be even more proud of: he started building schools in Afghanistan and Pakistan.

My school started raising pennies. I remember the first time my friends and I counted the pennies and I got so excited because we had raised over 500 pennies. Now we have over 1.8 million pennies and I couldn't be prouder.

My school got the chance to meet Greg Mortenson. First we had an assembly and we shared three cups of tea with him and sang a jump rope song for Greg that my friends wrote. The all of the leaders of Pennies for Peace at my school got to talk to Greg altogether. We took off our shoes in the traditional way, and sat in the corner of the room in a circle. We got to ask him questions about his amazing journey and how it impacted his life.

Greg Mortenson is an inspiration. By reading this book I have learned that he is brave and trustworthy. My life has changed by just one man who is trying to make a difference in this world. I have learned that it feels so good to give something and not receive anything back. Now I want to make a difference too.

by Kelsey Holmes

Planning Staff Says No to Pot Pharmacy

(Continued from page 5)
contact between citizens using any of the parks or churches or other locations and any of the services associated with a medical marijuana dispensary.

"As such, because of the impossibility of accessing the park by any other means other than public streets, sidewalks or any other means of access that is less than 1000 feet, it is the applicants' position that their current location is in compliance with the clear intent of the [law]," he added.

As evidence, municipal planners received photographs to demonstrate that the proposed location is about 1431 feet from the park entrance on Rambla Pacifico and approximately 1684 feet from the park entrance on Las Flores

Canyon Road

Planner Ly takes exception to that. "However, [the municipal code] states that a medical marijuana dispensary 'shall not be located with a 1000 foot radius of a...park' the proposed use is located within a 1000 foot radius of the park. The distance between the entrance of the park and the use is irrelevant. Accordingly, the finding cannot be made," she wrote.

The applicants and their attorney countered. "These aerial photos conclusively demonstrate that there is no pedestrian, motor vehicle or bicycle means of access to a newly opened park. As such because of the impossibility of accessing the park by any other means other than public streets sidewalks or any other means of access that is less than 1000 feet, it is the

applicants' position that their current location is in compliance with the clear intent of section 17.66.120," Schectman added.

Another potential problem might loom for Green Angel given that the planning staff received correspondence of a print-out of an online forum discussion between registered members on Weedtracker.com celebrating that the pot pharmacy's "lounge is open." There were such comments as, "You can test your medicine as long as you have a designated driver. PS We have now added two HVY glass pieces." Malibu's law does not allow onsite consumption of marijuana.

With that in mind planning staff made a site visit. "Staff cannot verify conclusively whether the meeting room is used as a smoking

lounge and staff cannot conclude if the online posting was submitted by the operators of Green Angel. However, the photograph provided by the user appears to be similar to the meeting room indicated on the site plan," the staff report states.

Schectman also indicated that if the commission sides with its planner, the applicants are requesting a variance from the 1000-foot rule.

"The variance is sought because my clients have clearly properly addressed standards and intent of [the municipal code] yet the city has indicated that it will require strict compliance with the words of the ordinance as it relates to the proximity of parks," the attorney wrote in amending the application to include a variance request.

BY BILL KOENEKER

Create Your Own Economic Stimulus Package

Are you tired of watching billions of dollars going to profligate banks that pay seven-figure salaries to their execs as they lay off hundreds of employees, then party 'til dawn while small business faces the brunt of the recession?

No one is going to bail out community businesses. We have to do it ourselves. The Malibu Surfside News is designing packages of recession-buster advertising tailored to your needs. Don't let the only ad you run be a going-out-of-business sale, call us today at 310-457-2112 or 310-457-6397 and we'll work together to make a difference.



- Tires
- Custom Wheels
- Brakes
- Front Ends
- Wheel Alignment



TIRE MAN

You need it? We've Got it!
Largest inventory of tires in Ventura County

FREE

Every 5,000 Miles
Wheel Balance
Tire Rotation
Tire Repairs
Brake Inspection
WITH EVERY TIRE PURCHASE!



YOKOHAMA MICHELIN
PIRELLI Continental
BFGoodrich
PLUS ALL MAJOR BRANDS

TIREMAN
(805) 497-7573
2468 Thousand Oaks Blvd
Thousand Oaks

TIREMAN
(818) 879-5232
28115 Dorothy Drive
Agoura Hills



Coral Beach Cantina Malibu

Heated Patio

Happy Hour
Monday-Friday 3-6 p.m.

★ Traditional Margaritas - \$4.00 ★

★ All Appetizers \$3.00 Off (Guac not included) ★

★ Daily Lunch and Dinner Specials ★

★ Also Specials on Beer ★

29350 Pacific Coast Hwy. • 457-5503 • Open Daily 11:30 a.m.

A Matter of PUBLIC RECORD

NOTICE INVITING BIDS

NOTICE IS HEREBY GIVEN that sealed bids for the MALIBU LEGACY PARK PROJECT, Specification No. 2030, will be received by the City Clerk, at City Hall, 23815 Stuart Ranch Road, Malibu, California, 90265, at or before 3:30 p.m. Pacific Time on Thursday, July 16, 2009, at which time they will be publicly opened and read at or about said hour and date by the City Clerk (or designated representative) at the above address.

PRE-BID CONFERENCE

A non-mandatory pre-bid conference and site walk-through will be conducted on June 17, 2009, at 10:00 a.m. at City Hall, 23815 Stuart Ranch Road, Malibu, California, 90265. A site walk-through will be conducted immediately following the pre-bid conference.

SCOPE OF WORK

In general, the proposed improvements consist of construction of an 8 acre stormwater detention pond and park facility that generally includes, but is not limited to, earthwork and grading (import & export), concrete and asphaltic concrete pavements, concrete pavers, decomposed granite walkways, concrete curb and gutters, landscaping, irrigation systems, plantings and vegetation, pedestrian bridge, kiosks, art objects, donor plaques, stormwater channel tie-ins, reinforced concrete, ductile iron and PVC piping, storage tank, drain inlet structures, buried piping, ornamental metal cantilevered trellis structure, electrical work and appurtenances, instrumentation and controls, pump stations and wet wells, valve vaults, manholes, crosswalks, gross solids removal devices, piping, valves and appurtenances, and all other appurtenant work included and shown in the contract documents for Specification No. 2030.

The bid shall be submitted and the work shall be performed by a Class "A" State of California licensed contractor in strict conformance with the project specifications for Project Specification No. 2030 now on file in the City's Public Works Department.

Copies of plans and specifications may be obtained by prospective bidders from the Public Works Department at 23815 Stuart Ranch Road, Malibu, CA, 90265 upon the payment of a non-refundable fee of \$250.00, plus \$50.00 for handling and mailing fees, if mailed.

All prospective bidders shall abide by the provisions of the Bid Terms and Conditions listed in the project's specifications.

The City reserves the right to retain all bids for a period of 90 days after the bid opening date for examination and comparison and to delete any portion of the work from the Contract. The City reserves the right to determine and waive nonsubstantial irregularities in any bid, and to reject any or all bids. The bid shall be balanced so that each bid item is priced to carry its share of the cost of the work and also its share of the contractor's overhead and profit. **The City reserves the right to delete any bid item to the extent that the bid is qualified by specific limitation. An unbalanced bid shall be considered as grounds for rejecting the entire bid.** The City shall award the bid to the lowest responsible bidder as the interest of the City may require.

In accordance with the provisions of Division 2, Part 7, Chapter 1 of the California Labor Code, the California Department of Industrial Relations has established the general prevailing contracts for public works and improvements. The per diem wages published at the date the contract is advertised for bids shall be applicable. Copies of the prevailing rate of per diem wages are on file in the offices of the City Clerk, and such copies shall be made available to any interested party upon request. Future effective wage rates which have been predetermined are on file with the Department of Industrial Relations, are referenced but not printed in said publication. The new wage rates shall become effective on the day following the expiration date and apply to this contract in the same manner as if they had been included or referenced in this contract. The website for California Department of Industrial Relations Prevailing Wage Unit is currently located at www.dir.ca.gov/DLSR/PWD.

The wage rate for any classification not listed by the California Department of Industrial Relations, but which may be required to execute the proposed contract, shall be in accord with specified rates for similar or comparable classifications or for those performing similar or comparable duties, within the agencies' determinations.

The City will not consider awarding any contract based upon any bid submitted by any contractor nor consent to subletting any portions of the Contract to any subcontractor located in a foreign country during any period in which such foreign country is listed by the United States Trade Representative as discriminating against U.S. firms in conducting procurements for public works projects.

The City hereby notifies all bidders that it will affirmatively ensure that in any contract entered into pursuant to this advertisement, business enterprises will be afforded full opportunity to submit bids in response to this invitation and will not be discriminated

against on the grounds of race, color or national origin for consideration of an award.

The Contractor may substitute securities for retention monies pursuant to Public Contract Code, Section 22300.

Dated this 19th day of May, 2009

CITY OF MALIBU, CALIFORNIA

Robert L. Brager, Public Works Director/City Engineer

Published: Malibu Surfside News on May 28, 2009 and June 4, 2009

NOTICE OF PUBLIC HEARING TO IMPLEMENT THE PHASED WATER CONSERVATION PLAN FOR THE LOS ANGELES COUNTY WATERWORKS DISTRICT NO. 29, MALIBU, AND THE MARINA DEL REY WATER SYSTEM

In accordance with the California Water Code, Section 375, the Los Angeles County Board of Supervisors, as the Board of Directors of the Los Angeles County Waterworks Districts (Districts), will hold a public hearing on June 2, 2009, at 9:30 a.m. in the Hearing Room of the Board, Room 381, Kenneth Hahn Hall of Administration, 500 West Temple Street, Los Angeles, California 90012, in the matter of determining whether or not a water shortage emergency exists in the Los Angeles County Waterworks District No. 29, Malibu, and the Marina del Rey Water System and whether to implement the Phased Water Conservation Plan. On May 23, 1991, the Board of Supervisors approved a multiphase water conservation plan for the Districts that provided for water usage reductions

ranging from 10 to 50 percent depending on a water supply shortage to any or all of the Districts. Target goals were established for the Districts that were based on historical usage for larger commercial and multiresidential meters (1 inch or larger) and based on the Districts' average usage for smaller residential meters. The Board of Supervisors will consider and may adopt the Plan as recommended by the Director of Public Works. The Plan will be in effect no sooner than the first full billing period commencing on or after the date of publication of the notice to the Los Angeles County Waterworks District No. 29, Malibu, and the Marina del Rey Water System customers. For additional information regarding this matter, please call (626) 300-3362. Si no entiende este aviso o si necesita más información, favor de llamar al teléfono (626) 300-3314. Nuestra oficina esta abierta de 7 a.m. a 5:45 p.m., de lunes a jueves. 5/21, 5/28/09 CNS-1593373# MALIBU SURFSIDE NEWS

NOTICE OF PUBLIC HEARING CITY OF MALIBU

The City of Malibu City Council will hold a public hearing on **MONDAY, June 8, 2009, at 6:30 p.m.** in the Council Chambers, Malibu City Hall, 23815 Stuart Ranch Road, Malibu, CA, for the projects identified below.

PUBLIC HEARINGS TO HEAR COMMENTS AND CONSIDER RESOLUTIONS LEVYING ASSESSMENTS FOR THE MAINTENANCE, REPAIR AND IMPROVEMENT OF WORKS, SYSTEMS AND FACILITIES FOR THE FOLLOWING:

Assessment District No. 98-1 (Big Rock)
Assessment District No. 98-2 (Calle Del Barco)
Assessment District No. 98-3 (Malibu Road)

Written objections or comments regarding the Assessment Districts may be submitted to the City either by mail addressed to the City Clerk or may be delivered directly to City Hall during regular business hours, 8:00 a.m. to 5:00 p.m., Monday through Thursday, and 8:00 a.m. to 4:30 p.m. Fridays between now and Monday, June 8, 2009. Written objections or comments may also be submitted to the City Clerk prior to the start of the meeting. All written objections or comments must be received by the City prior to the opening of the public hearing.

A copy of all relevant material, including resolutions, staff reports, and Engineer's Reports, are on file and available for inspection in the Public Works Department, Malibu City Hall, 23815 Stuart Ranch Road, Malibu, California 90265. The City Hall phone number is 310-456-2489.

IF YOU CHALLENGE THE COUNCIL'S ACTION IN COURT, YOU MAY BE LIMITED TO RAISING ONLY THOSE ISSUES RAISED AT THE PUBLIC HEARING DESCRIBED IN THIS NOTICE, OR IN WRITTEN CORRESPONDENCE DELIVERED TO THE CITY, EITHER AT OR PRIOR TO THE PUBLIC HEARING.

Claudio Sanchez, Deputy City Engineer

Published: Malibu Surfside News on May 21, 2009 and May 28, 2009

LETTERS to the EDITOR

(Letters are continued from page 4)

spending more time outdoors...and perhaps, in the end, create more development.

Ginette Kingman

CAMPING

Editor:

As the weather warms, camping heats up again. As the state braces for brutal cuts totaling some \$21.3 billion dollars, of which \$5 billion (with a B) would be cut from education, the Santa Monica Mountains Recreation & Conservation Authority is embracing its plan to spend millions of dollars constructing camping sites and additional parking facilities in Malibu, including a 28-car parking lot at the end of Winding Way, which will require extensive grading through a beautiful meadow. Those of us who live on Winding Way know exactly what's going on when we hear helicopters hovering overhead and search and rescue vehicles racing up our streets; someone has been injured (again) while climbing the treacherous unmarked trail in back of the waterfall, which isn't even owned by the conservancy!

That's right, the MRCA does not own the entire waterfall at the end of Escondido Canyon, but their trails lead everyone right up there. The public safety issue is of grave concern and the increasing popularity and interest in this private trail in back of the falls will only lead to more problems and continue to tax city resources with increasing rescues. And that's not all, because overnight camping in this box canyon adjacent to our homes is still a very real possibility. Yes, the MRCA wants to allow "cold camping" (which bans bonfires but allows camp stoves which have to be lit by matches).

Let's just hope the wind never suddenly whips up (does that ever happen here?), or that a toss of the Frisbee doesn't accidentally knock over the "cold camping" stove's flame.

It is essential that the community review the Public Access Enhancement Plan, (<http://mrca.ca.gov/pwp.html>) (which will impact Winding Way, Ramirez, Latigo and Corral Canyon Homeowners), and show up in force to the Coastal Commission meeting next month in Marina Del Rey.

Lori Gray

OPTIMISM

Editor:

Just when I start to lose my optimism for progress being made and I start to sink further into the abyss of apathy something grabs me by the back of my neck and pulls me upwards.

Allow me to elaborate: For the better part of the past two years I have been waging a personal war against MoonShadows, albeit in my head, for the amount of debris the establishment and their patrons deposit along the stretch of PCH that I clean. I have adopted the stretch, roughly two miles long, from just past Big Rock to Las Flores and the majority of the trash is generated both directly and indirectly from them.

Well, I want to give praise to Allesandro and Chris, the managers at MoonShadows for helping me come up with a simple solution to at least a major contributor for the mess; valet parking stubs. I find them everywhere, even in the ocean.

We devised a simple solution, just have the attendants grab the stubs off the windshield before driving the cars back to their owners and tossing them in a trash can back at the valet stand rather than leaving them on the window and having the owners toss them along PCH.

Well, so far so good. I barely came across any valet stubs while cleaning the stretch of PCH this last weekend. It's not due to a downturn in their patronage either, I can attest to that.

This may not seem like much in the grand scheme of things we need to fix in this community, but it is refreshing to know that when people are willing to work together things can and often do get accomplished and progress can be made, no matter what the amplitude may be.

Now changing the behavior of their patrons, I don't have the energy for that!

Robert Pousman

Scoping Out the Locals



SEE BIRDS—The Santa Monica Bay branch of the Audubon Society offered children and adults the opportunity to take a closer look at local avian residents over the holiday at a pair of bird walks at Malibu Lagoon State Beach.

MSN/Frank Lamonea

Water Board

(Continued from page 2)

on the Heal the Bay beach report card and the mobile home park is likely a main source of the pollution," states a report from Heal the Bay.

For many years, Heal the Bay says it has pressured the board to issue fines for what it calls "egregious, continuous violations. We are ecstatic that this has finally occurred." Members have been urging other enviros to attend the meeting to support the staff's proposed enforcement action.

Another important public meeting is planned later in June that will be held in Malibu. Three members of the water board and its staff are scheduled to meet with Malibu city officials on June 17 to begin discussions about modifying the Memo of Understanding between the city and RWQCB for on-site wastewater treatment system permits.

The meeting will be held from 10 a.m. to noon at Malibu City Hall. No action will be taken at the meeting by the board, according to RWQCB documents.

Last November, the board directed the staff to renegotiate the MOU after the city claimed it could issue a permit for its Lumberyard shopping center project and ran head on into the board and its staff, which argued it was not the municipality's purview to do so.

Soon after, the staff recommended the board consider not only renegotiating the MOU, which is soon to sunset, but also to consider a prohibition of septic systems in the Civic Center.

The subsequent study of the MOU and proposed prohibition by the board staff also became the impetus for the Notice of Violations issued to Civic Center area properties by the staff several weeks ago, according to a RWQCB staffer.

BY BILL KOENEKER

Task Force Members on the Defensive

(Continued from page 2)



COUNCIL CHAMBERS—It was standing room only at the Malibu City Council Meeting where Trancas Park designs, the budget and view protection issues dominated the agenda.

Photos MSN/Frank Lamonea

city's resources," he said.

However, one task force member, who had been commended by task force members last week, said he was offended by the elimination of the Malibu Country Estates view protection regulations in its overlay district from the proposed ordinance and quit the panel effective Monday night.

"I told the committee to leave it alone. I am personally offended by the committee, which is run by a few power hungry people," said Hiro Kotchounian, who was appointed by Stern. "They are exceeding their authority. The committee was not elected by the people."

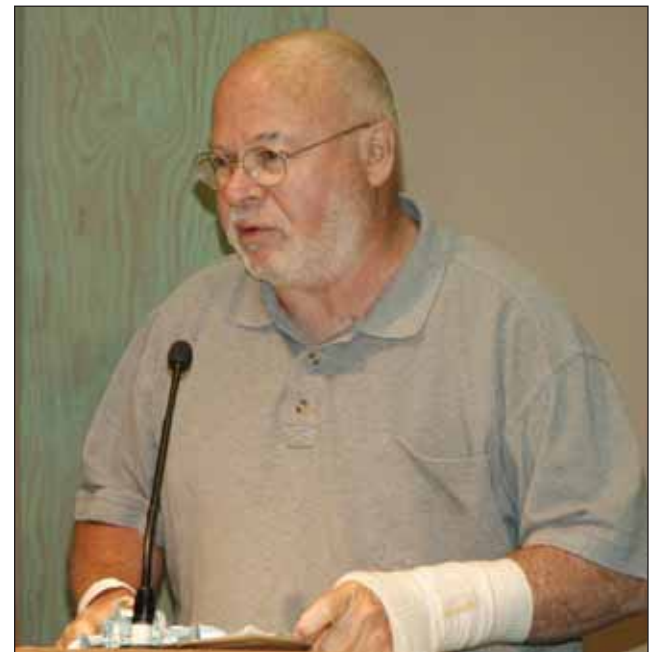
Task force member Susan Zimmer applauded Stern's remarks and, without elaborating, said, "I want to thank the mayor for instructing the committee to not write an ordinance. The committee did not follow the council direction." She went on to say the task force's recommended ordinance follows too closely the

Palos Verdes law, which is for a planned community. "It is not balanced or fair."

Councilmember John Sibert said he was not too concerned about how the work product was delivered to the council. "It hasn't come to us. It is only the beginning. I don't care what form it comes in. I would like to see a minority report with a rationale and supporting evidence," he added.

Councilmember Pamela Conley Ulich noted she had viewed the meetings, which she described as "not peaceful," and took place in "a toxic environment." She said she was looking for three items from the panel. "One, come together to talk as adults. Two, mediation has to be an objective. Three, the cost not to be borne by the city. These trees are not that important in the realm of life. Have a dissenting view but be respectful," she added.

Councilmember Sharon Barovsky pointed out to task force members the problem the city has had with crafting decisions,



TASK FORCE TALK—View protection task force chair Sam Hall Kaplan addresses the City Council Tuesday night about insisting it followed council directive about crafting an ordinance.

laws and projects. Citing the Trancas Canyon Park proposal as an example, she said no matter how many meetings, workshops or hearings are conducted, some folks want another meeting for another idea and there did not seem to be any endpoint.

The matter was not on

the council's agenda, consequently no action was taken by the council, nor was any date set for the item to come to the council dais. The task force has scheduled two public meetings, where it anticipates getting public feedback.

BY BILL KOENEKER

Stay up to date with
all the local news at
www.malibusurfsidenews.com

BEACHES

Thurs., May 28

● The Malibu Chamber of Commerce is holding its sixth annual Malibu Food and Wine Tasting from 5-8 p.m. at Malibu Wines, 31800 Mulholland Hwy. FI: malibu.org.

● The View Restoration/Preservation Task Force is meeting at 3 p.m. in Malibu City Hall Council chambers. FI: 310-456-2489.

● Heal the Bay is holding its annual "Back to the Beach Gala" at Barker Hangar in Santa Monica. Honorees this year are Heal the Bay Board member Mark Attanasio and L.A. visual artist Catherine Opie. Tickets are \$500 each. FI and reservations: healthbay.org/bbb.

● Malibu High School, 30215 Morning View Dr., is presenting Stephen Sondheim's Tony Award-winning musical "Sweeney Todd" each night through Sat., May 30 at 7 p.m. and on Sun., May 31 at 2 p.m. Tickets are \$20 for adults and \$15 for students when purchased in advance or \$20 at the door for all tickets. FI: malibuhigh.smmusd.org or 310-457-6801.

Fri., May 29

● Each Friday at 10 a.m., the historic Adamson House holds a docent-led garden tour starting at the entrance gate to the Malibu Lagoon State Park. The \$5 fee includes an 11 a.m. tour of the house which showcases the distinctive tiles that were made in Malibu 80 years ago. House and museum tours are also given Wednesday through Saturday from 11 a.m. to 2 p.m. Reservations are required for groups of 10 or more. FI: 310-456-8432.

● BeauRivage Restaurant, 26025 PCH, is featuring ballroom, swing and salsa dancing featuring Tony Michaels from 7-11 p.m. There will be drink and appetizer specials from 7-9 p.m., drawings for dinners, a ballroom lesson and non-stop music. The cost is \$20 each. FI and RSVP: 310-456-5733.

Sat., May 30

● Malibu Little League Closing Day will take place at Bluffs Park with games and food beginning

at 9 a.m. The closing ceremony will begin at 5:30 p.m. and an outdoor movie, "The Perfect Game," at 8 p.m. FI: malibulittleleague.org.

● The Samohi Alumni Association is holding the 20th Annual Samohi All-Class Picnic in the school quad from 11 a.m.-3 p.m.; registration begins at 10 a.m. Bring a picnic or buy hot dogs and hamburgers at the event. FI: 310-396-7027 or email jljaffe@earthlink.net.

● The Los Angeles Committee of Water for People is holding a Spring Hike-a-Thon at Charmlee Wilderness Park at 9:30 a.m. Registration fees are \$25 for individuals and \$90 for teams of four. Check-in is from 8:30-9:30 a.m. Proceeds from the hike will benefit Water for People. FI: waterforpeoplela.com.

● "The Give Back from the Heart," a benefit concert to raise awareness for the Midnight Mission, will take place at the Malibu Performing Arts Center, 23825 Stuart Ranch Rd., at 6 p.m., with the concert beginning at 7:00 p.m. The cost is \$100 for VIP tickets, \$45 for reserved seating and \$22 for general admission. FI and tickets: thegiveback.com.

Sun., May 31

● The Malibu High Environmental Club is hosting an E-Waste Round-Up from 10 a.m.-2 p.m. in front of the high school, 30215 Morning View Dr. Acceptable items include computers, monitors, microwaves, cell phones, televisions, VCRs, DVD players and batteries. FI: sarah.prunier@smmusd.org.

Wed., June 3

● The Malibu High School Choral Dept. is presenting a free Solo Show at 7:30 p.m. at the school, 30215 Morning View Dr. FI: 310-457-6801

Thurs., June 4

● Santa Monica College's Emeritus Art Gallery is holding an opening night reception for Exhibition I of "Field of Vision," featuring two-dimensional works in various mediums. The reception will take place from 5-6:30 p.m., in the Emeritus Gallery, 1227 Second St. in Santa Monica. The exhibit will run through July 3, and gallery hours

are 8:30 a.m.-4:30 p.m. One of the artists who will be exhibiting work is Malibuite John Cairns. FI: 310-434-4306 or smc.edu/emeritus.

● The Choral Music Department at Malibu High will present its annual spring concert at the school, at 7 p.m. Admission is free. FI: 310-457-6801.

Fri., June 5

● Members of the Malibu Art Association meet on the first Friday of each month from 11 a.m.-3 p.m. at the Malibu Country Mart and paint plein air. The show is called "Montmartre in Malibu and 15 percent of sales go to the MAA scholarship fund. FI: Maqueart@yahoo.com.

● The sixth annual Operation Smile Gala will take place at Semler Winery in Malibu. Cocktails will be served at 6:30 p.m., with dinner at 8 p.m. FI: operationsmile.org.

Sat., June 6

● On the first Saturday of each month, members of the EAA Aviation Foundation take youths ages eight through 17 on free flights from 10:30 a.m.-4 p.m. at the EAA Chapter 723 hangar in Camarillo as an introduction to aviation. Each child receives a "Young Eagles" certificate and a booklet on flying. FI and reservations: 805-647-6994.

● The Malibu Seventh Day Adventist Church is presenting Leroy Reese, MD. who will speak on the importance of a natural diet at 11 a.m. at Webster Elementary School, 301 Winter Canyon Rd. The talk will be followed by a vegan meal and a hike. FI: 818-458-8884.

Tues., June 9

● The Instrumental Music Department at Malibu High will present its annual spring concert at the school. Admission is free. FI: 310-457-6801.

Wed., June 10

● Malibu Green Machine is holding its annual potluck summer picnic at 5 p.m. to celebrate the completion of phase one of the PCH enhancement project at 31500 Broad Beach Rd. FI: malibugreenmachine.org.

● The student musicians at Malibu High will present its annual spring

concert at the school. Admission is free. FI: 310-457-6801.

Fri., June 12

● Malibu Women in Film is holding a networking breakfast from 8-10 a.m. at the Chart House, 18412 PCH. The guest speaker will be Pam Rodi, vice-president of marketing and publicity for Independent Myriad Pictures. The cost is \$10 for members and \$15 for non-members, cash at the door. FI: 310-457-8664, candace@malibu-

online.com

Sun., June 14

● The Wishtoyo Chumash Village, located at 33904 PCH at Nicholas Canyon Beach, is holding an open house from 9 a.m.-5 p.m. FI: wish-toyo.org.

Thurs., June 18

● The Malibu Township Council meets on the third Thursday of each month at the Malibu Jewish Center and Synagogue, 24855 PCH at 6:30 p.m. The meetings are open to the public. FI: malibutownshipcouncil.org.

Malibu Cinemas
HOLLYWOOD THEATERS

All of the amenities and none of the hassle.

3822 Cross Creek Road • 310-317-4531 • 310-456-6990
SPECIAL ADMISSION PRICES FOR STUDENTS, SENIORS & CHILDREN
BARGAIN MATINEE DAILY - FIRST SHOW ONLY

RESERVE TICKETS ONLINE AT www.gohollywood.com Our theaters feature **DOLBY DIGITAL**

UP (PG)	Terminator (PG-13)
Fri-Thur 4:15, 7:15, 9:45 Sat, Sun 1:15, 4:15, 7:15, 9:45	Fri-Thur 4:00, 7:00, 9:45 Sat, Sun 1:00, 4:00, 7:00, 9:45
www.gohollywood.com	

5/29/09-6/4/09

● Proposed calendar listings must be submitted to *The News* as far in advance of event as possible. Items for free listings will be screened for community-wide interest and are subject to space and lead time limitations. If you would like to list a commercial event, contact the advertising department for information about charges. Items must include an FI, or "For Information" number, whenever possible. Submit items for consideration in writing (no listings will be accepted over the telephone) by Friday to: *MSN Calendar, P.O. Box 947, Malibu, CA 90265* or FAX listing information to 310-457-9908 or by email to news@malibusurfsidenews.com.

Malibu Religious Services Times

St. Aidan's Episcopal Church	310-457-7966
<small>www.staidanchurch.org 28211 Pacific Coast Highway (Rev. Joyce Stickney) 8 a.m. Holy Eucharist, 10 a.m. Holy Eucharist, music, choir, Sunday School and childcare (10-11 a.m.).</small>	
Our Lady of Malibu Catholic Church	310-456-2361
<small>3625 Winter Canyon Road (Rev. William F. Kerze) Sat. 5 p.m. Sun. 7, 8, 10:30 and 12:30</small>	
Malibu Seventh-Day Adventist Church	818-458-8884
<small>Sat. 9:30 a.m. at Webster Elementary, 3602 Winter Canyon Rd. Mailing Address: 23852 Pacific Coast Highway., #611 www.malibusdachurch.adventistfaith.org</small>	
Malibu United Methodist Church	310-457-7505
<small>30128 Morning View Drive (Pastor Andrew Mattick) Adult & Youth classes, 10:30 a.m. Contemp. Worship & Children's Class</small>	
Malibu Presbyterian Church	310-456-1611
<small>3324 S. Malibu Canyon Road (Rev. Greg Hughes, Pastor) Sun. 9:30 a.m. Trad./Contemp. Blended, 11 a.m. Contemp. Nursery thru 5th grade Sunday School at both services.</small>	
First Church of Christ, Scientist	www.tfccs.com 310-457-7767
<small>28635 W. Pacific Coast Highway 10 Church & Sunday School, Wed. 8 p.m.</small>	
University Church of Christ	310-506-4504
<small>24255 Pacific Coast Highway (Minister, Ken Durham) Our fall worship schedule is subject to change so please consult our church web site at http://www.universitychurchofchrist.us for the current schedule.</small>	
Waveside Church	310-774-1927
<small>Malibu West Beach Club (Pastor Dave Dowler) Sun. 10 a.m. Nursery through 5th grade service available. www.wavesidemalibu.com</small>	
Chabad of Malibu	310-456-6588
<small>22933 Pacific Coast Hwy. (Rabbi Levi Cunin) Fri. 6:30 p.m., Saturday 10 a.m. followed by lunch</small>	
Pacific Palisades Presbyterian Church	310-454-0366
<small>15821 Sunset Blvd. (Rev. K. Edward Brandt, D. Min.) Sun. 9 a.m. Contemp. 10:30 a.m. Traditional Sunday School & childcare both services www.palipres.org</small>	
Calvary Chapel Malibu	310-589-WORD(9673)
<small>Sun. 10 a.m. at Juan Cabrillo School Wed. 7 p.m., Bible Study at 6136 Tapia Dr.</small>	

‘EPI’ Study Involves Some Major H2O Sleuthing

■ Scientists Relationship Between Illness to Nonpoint Pollution Sources



“EPI” STUDY—Visitors to Surfrider Beach were greeted by researchers, who are trying to find out if there are any links between ocean usage and increases or decreases in beachgoers getting ill. Those who participate are asked a couple of questions and then are later contacted and asked health related questions, such as if they got sick after a splash in the surf. It is one of several epidemiological studies examining the relationship between bacteria in the ocean water and health risk. The Surfrider study scheduled for this summer is designed to look at the relationship between beaches where it is suspected that nonpoint sources are the dominant fecal input. The study is being conducted by Dr. Jack Colford, M.D., Ph.D. and his research team at the School of Public Health, University of California, Berkeley, along with the Southern California Coastal Water Research Project.

MSN Photos/Frank Lamonea



DOWN THE HATCH—SCCWRP officials say they are taking a collaborative approach, supplying samples such as the one in the photo above, where two of the research crew pour water into a sample bin, to numerous investigators who have developed a variety of methods for new indicators, since the marginal cost for additional sample collection is small relative to the fixed cost of the epidemiological data collection and analysis.



LAB RESULTS—While beachgoers are being queried about their health, researchers, including Yi Ping Cho and Kelly Goodwin from SCCWRP, assess water quality in order to evaluate swimmer exposure. The study is being conducted using what is called “a prospective cohort design,” in which swimmers and non-swimmers are monitored for water exposure while at the beach and surveyed for illness that occurs in the two weeks subsequent to their beach visit. They will be queried in respect to gastrointestinal, respiratory, dermatological, ear, eye and other nonspecific symptoms.



SAMPLING—Researcher Cho takes on the arduous task of numbering, recording and analyzing ocean water test samples that must be matched with the exact date and location of the sampling site on Surfrider Beach where the information can be readily available to match those results with the time and location of testing participants, who may report having gotten ill from being exposed to ocean water where the sample was taken from.



RESEARCH SPACE—The lab is located behind the Civic Center. Measurements will include both traditional and non-traditional indicators. Traditional methods quantify total coliform, fecal coliform and enterococcus using membrane filtration. Enterococcus will also be measured using the enterolert chromogenic substrate method. Nontraditional measurements will include rapid method for quantifying enterococcus and E. coli, Bacteroides, Bacteroides thetaiotaomicron, adenovirus and coliphage.



Sheriff's REPORT

LEVANTED LIGHTS

A resident of the Los Flores area of Pacific Coast Highway reported that sometime on May 17 or 18 the headlights, valued at \$4000, and the taillights, valued at \$1000, of her late model SUV were removed from the vehicle while it was parked outside of her residence. The Lost Hills Sheriff's Station deputy who responded to the report observed disconnected wires hanging from the empty sockets where the lights should have been. The vehicle appeared otherwise undisturbed. The victim stated that she had "heard nothing out of the ordinary." A report memo was issued and a print deputy requested.

FAN FRACAS

A vehicle parked in front of a residence in the vicinity of Big Rock was vandalized sometime between May 12 and May 14. The victim informed sheriff's deputies that the vehicle had been parked on her driveway and not moved for two days. When she opened her car door on the morning of May 12, she saw pieces of glass fall from the passenger-side rear window. The victim told deputies that she did not know who committed the vandalism, but that she suspected a pair of female German tourists who arrived at her home requesting to see her husband, who is a TV actor. The victim told deputies that the two females had been "camping in the area and causing disturbances," and revealed that a deputy had previously responded to a report that the women were attempting to contact the victim's husband, despite being requested "to leave them alone." A report memo was issued.

BUSTED BURGLERS

According to the Lost Hills Sheriff's Station watch commander, sheriff's deputies successfully apprehended a pair of suspects who are alleged to be responsible for a recent string of smash and grab vehicle burglaries in western Malibu. The suspects' alleged modus operandi

involved casing and breaking into vehicles parked at area beaches. The arrest took place at Zuma Beach on May 21.

CELEBRITY CONGESTION

The weekend was surprisingly calm, despite the Memorial Day holiday, according to the watch commander of the Lost Hills Sheriff's Station. "Just everyday stuff," he told the Malibu Surfside News. However, a pair of Point Dume celebrity celebrations contributed to beach traffic gridlock on Saturday and Sunday. On May 23, Jay Leno presided over a fundraiser for Shakespeare Festival LA, entitled the Shakebeer Kegger, at the home of Adam and Lynette Carolla. Point Dume residents had barely recovered from the first round, when the so-called "Nivea Beach House" located Cliffside Drive hosted a "Bikini Bash" on Sunday, with an alleged crowd of 400-plus. Residents of the usually quiet residential neighborhood were reportedly dismayed by what one neighbor described as "a feeding frenzy of paparazzi" during Sunday's event. However, the watch commander reported that sheriff's deputies were able to direct traffic at the weekend events with a minimum amount of traffic disruption and there were no major incidents.

BY SUZANNE GULDIMANN

Behrle Graphics

Logos • Brochures • Layout & Design

Photography • Illustration • Drawing and Animation

Reasonable rates

Richard Behrle
r_behrle@yahoo.com

310 280-8690
818 718-1172

Resident Honored by Malibu City Council



MUNICIPAL MERIT—Community activist and journalist Hans Laetz received a decorated commendation from Mayor Andy Stern at this week's Malibu City Council meeting. Laetz was acknowledged by the city for his online California LNG News Service, a compendium of over 1000 postings, including his own research on LNG that has been cited around the world in the successful fight against the BHP Billiton Cabrillo Port project proposed for off the Malibu coast and on other LNG projects still on the drawing board from the East Coast of the United States to Australia. Laetz recently received the juris doctor degree from the Ventura School of Law and is doing consulting work on LNG public policy issues while preparing for the California bar exam. MSN/Frank Lamonea

• MALIBU PROFESSIONAL and BUSINESS GUIDE •

• PROFESSIONAL •

Accountants

Johnson, Harband, Foster & Darling, CPAs 310-454-6545
Pacific Palisades - Full Service Tax and
Accounting Firm. jhfd@jhfd.com

Attorneys

BRICKELL & MEZA 310-858-3555
Serious injury lawyers/all claims & cases Free Consult
20 YEARS in Malibu & Beverly Hills

Doctor of Chiropractic

BRUCE A. PARKER D.C.
Practicing in Malibu since 1984
Treatment for stress - Sports Injuries.
In Malibu Health Club
310-456-7721 • Fax 310-456-5191
22917 Pacific Coast Highway, Suite 220
Malibu, CA 90265
310-456-7721

Dentists

David C. Niebergall, D.D.S. 310-457-9292
29350 Pacific Coast Highway, Suite 3

V. Mishra & N. Kripalani, D.D.S. 310-456-6497
23706 Malibu Road

Allan V. Pfeiffer, D.D.S. 310-456-2051
23440 Civic Center Way, Suite 201

Electrical Contractor

North Bay Electric 310-456-7076
Serving Malibu Since 1985 Lic. #493652

Financial Services

Malibu Capital Management Inc./Securities America/
Security America Advisors. Full Service Asset Management.
Wayne Ribnick and Wally Glass 310-457-5113

Optometrists

Gregory O'Connor, O.D. 310-456-7464
3840 Cross Creek Road

Orthodontists

Richard L. Jacobson, D.M.D., M.S. 310-454-0317
Invisible/Conventional/TMD
881 Alma Real Dr., #200, Pacific Palisades, CA

Oral Surgeon

Stephen J. Nahigian, DDS 310-456-2051
23440 Civic Center Wy. #201

Physical Therapists

Gregory S. Beaton, PT, OCS 310-456-9332
Malibu Rehabilitation Center—Orthopedic/Sport Therapy & Gym

Physicians

Susan S. Ransome, M.D. 310-456-7477
Board certified eye physician and surgeon
22225 Pacific Coast Highway, Suite 8, Malibu, CA 90265

• MALIBU PROFESSIONAL and BUSINESS GUIDE •

Physicians

James H. Sternberg, M.D. 310-456-1765
23410 Civic Center Way, Suite E-8 Dermatology

Mary Lee Amerian, M.D. 310-456-7561
23410 Civic Center Way, Suite E-8 Dermatology

Psychologists

Ann Forisha Thiel, Ph.D., M.F.C.C. 310-457-7606
Clinical Psych. & Marr., Fam., Child & Adolescent Therapy
28990 Pacific Coast Highway, Bldg. C, Suite 220

Sharon A. Talovic, Ph.D. PSY9674 310-456-7230
Individual and Couples Therapy

• BUSINESS •

Air Conditioning & Heating

Malibu Refrigeration 310-457-9986
P.O. Box 4088 Malibu, CA 90265

Glass

Malibu Glass Company 310-456-1844
3547 Winter Canyon Road

Housecleaning

Malibu Maintenance—William D. 310-387-5408
Residential/Commercial

Roofing

Coastal Roofing Co. 310-455-2827
P.O. Box 2531 Malibu, CA 90265

SportsSPORTS SportsSPORTS SportsSPORTS SportsSPORTS Sports

MHS Softball Update

The 2009 Malibu Softball team season has just concluded. The Sharks needed a victory last week against rival Carpinteria to earn an automatic berth in the CIF Playoffs and on senior day the girls won a 10 inning thriller 9-8 that included dramatic comebacks in the 7th, 9th and 10th innings. The many fans in attendance witnessed an incredibly played softball game by the Sharks. This comeback victory earned the Sharks a trip to Playoffs and on Tuesday they beat Faith Baptist 6-5 with yet another late inning dramatic comeback. The ladies were down 5-0 in the 6th inning when they scored 5 runs to tie the game and added another run in the bottom of the 7th to win it. The victory earned the Malibu High Softball Program its first playoff win in its history. The next round of playoffs placed the team to face the challenge of

playing the state's number one ranked softball program in La Salle of Pasadena on their home field where they are undefeated and have dominated everyone with 8 consecutive shutouts. On Thursday, the team staged yet another dramatic comeback and scored 2 runs in the 7th inning and had the tying run on base to fall just short and lost to La Salle 5-3. After the game, La Salle's coach congratulated the Sharks for their play and said they were lucky to advance from one of the toughest opponents all season. The 2009 Malibu Sharks softball team never quit and never stopped fighting to the very end where they came one pitch short against number one in the state. The team is proud of its first playoff victory but more importantly the heart with which they played all year.

Runner



RUN, FORREST, RUN—Quinn Conway won first place for running the most laps of the entire first grade at Fiesta Cabrillo's Jog-A-Thon. Nicknamed "Forrest" during the event, Quinn ran the entire one hour event without stopping.

Malibu's Own World Champion

Dino Haynes, a 42-year Malibu native, and a 2007 inductee for lifetime achievement into the Martial Arts Masters Hall of Fame, recently returned from Cebu City, Philippines where he successfully defended his world championship in the super heavyweight division in full contact stick fighting, which he first won in 2006 in a competition held in Jakarta, Indonesia. Haynes holds advanced degree Black Belts in several different disciplines, including Tang Soo Do Karate, Doce Pares, Kick Boxing, and Warriors Heart Karate. He is the founder and chief instructor of Warriors Heart Karate located in Agoura.



City Manager Signs on for Four More Years

■ Will Remain at His Current \$170,400 Annual Salary

The Malibu City Council recently agreed, without comment, to extend the city manager's contract for four more years.

City Manager Jim Thorsen asked for no salary increase at this time, but successfully sought an amendment to his current contract that would allow him to accrue up to 60 days of unused vacation and sick time, according to City Attorney Christi Hogin, who participated in the employment talks with Thorsen.

The council and Thorsen agreed on the new terms of the contract at a closed-door session on May 4. At last week's regular council meeting, members formally voted on the matter.

When Thorsen was hired three years ago on a two-year contract he started at \$156,000 per year plus full benefits. He later got a raise to his current salary of \$170,400. The contract provides that the council will continue to review the performance of the top administrator at least annually, or at any time it chooses.

Thorsen started his career with Malibu in

May 2006. Before coming to Malibu, Thorsen worked two years as assistant city manager for Agoura Hills. He was the city's public works director and city engineer for seven years.

His previous job was with the city of Simi Valley, where he worked in the public works department for 10 years after moving to California from Colorado, where he worked for various municipalities for about three years.

Thorsen is married with two children and has lived in Moorpark with his family since 1994.

He was raised in Montana and eventually moved to a suburb of Denver, Colorado, where he finished high school and college. He graduated from Colorado State with a degree in civic engineering.

When he was hired by Malibu he said he left Agoura "to move up the ladder and look for new challenges, take on new responsibilities and run the entire show."

BY BILL KOENEKER

Farmers Market Permit Request Goes before Planning Commission

After years of wrangling, fits, stops and starts, Cornucopia Foundation, the original operators of Malibu's downtown farmers market, is getting its shot at obtaining a permit to operate a farmers market.

A meeting is planned before the Malibu Planning Commission on June 16 for a request by the organization, run by Debra Bianco and Remy O'Neill, for a Conditional Use Permit to operate a farmers market by the nonprofit organization in the Civic Center complex parking lot.

Council chambers had been invaded by the group and its supporters last February when loud vocal support was heard and Bianco and O'Neill pleaded with city officials for a permit after years of municipal snafus, stalls and false starts.

The pair was followed by more supporters including school officials and school children and their parents.

Cornucopia's application had been submitted in 2005 after the city insisted they had to be shut down because municipal planners had been in error about the zoning of the parking lot. Consequently, the city said that required a new zoning law and new ordinance for permitting farmers markets.

The matter was on the table after 2005

because municipal officials said they needed some kind of proof that the county would agree to leasing the parking lot to Cornucopia.

A showdown of sorts occurred at the February council meeting when Bianco insisted all of the paperwork with the county was cleared.

When Councilmember Sharon Barovsky was told it came from the county Supervisor's office, through aide Susan Nissman, the council member remarked, "Put in your application and your problems are solved."

Years ago, when the city indicated it had wrongly zoned the parking lot at the county-owned complex where the market was held, the market was subsequently shut down, city officials insisting on a closure until the zoning matter was resolved.

After the zoning was changed, problems surfaced because the county originally indicated it would not hand out a lease until the city issued a permit. However, the city insisted it could not issue a permit until the organization had a lease in hand. The situation produced a stalemate and Malibu has been without a farmers market since then.

BY BILL KOENEKER

There is Good News and Bad News for Malibu in Summer Beach Report

Surfrider Beach made the bummers list when Heal the Bay released its annual beach report last week of the top 10 beach bummers. It was the only Malibu beach this year.

Surfrider Beach came in eighth, meaning it was the eighth worst beach in the state receiving an overall flunking grade for the year.

That was the bad news, the good news was that several Malibu beaches dropped off the list, including Marie Canyon and Escondido State Beach.

However, the report listed poor grades for year-round dry weather for Paradise Cove, Escondido Creek, and Solstice Canyon.

"Our Marie Canyon [stormwater treatment] facility has removed Puerco Beach from the list of 'Beach Bummers' for the first time in three years," said Mark Pestrella, a spokesperson for the Los Angeles County Flood Control District,

which oversees operations of some treatment facilities.

However, that wasn't the story during the first part of the year, according to Heal the Bay. "Marie Canyon exhibited a surprisingly poor grade because the county constructed and operates a dry weather runoff treatment facility near the outlet of the creek. The facility has not performed as expected for various reasons," the beach report states.

The small plant was designed to filter and treat as much as 100 gallons per minute of dry weather runoff. Pump problems led to poor grades for a number of months. "While the beach location has received an annual F grade, this is reflective of the poor water quality seen before the pumps were fixed. Now that the facility is operational, water quality has improved substantially during dry weather and it is hopeful

that this will be reflected in this year's end of the summer grades," the report adds.

The Heal the Bay report notes that overall dry-weather water quality in Los Angeles County this year fell slightly below the county's five year average, though "a handful of chronically polluted beaches in Malibu and elsewhere helped drag down the county's overall grades."

One of the other notable remarks the environmental organization made is the growing disparity between improving dry grades and lagging wet grades that indicates that "cities have made strides to mitigate dry weather pollution but are still grappling with stormwater runoff and its harmful effects on year-round ocean users."

The enviro group also noted Los Angeles County has been one of the least impacted

counties by state funding cuts to continue water quality testing. Ventura County had ceased all ocean testing because of the state budget crisis, which eliminated the funding.

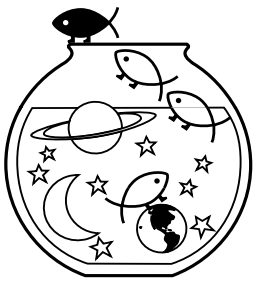
"With the summer coming, the state has made assurances that it will start restoring funding to beach monitoring programs, but there is no firm date," said Mark Gold, president of Heal the Bay.

LA County's move to sample at the mouth of flowing storm drains and creeks due to the Santa Monica Bay Beach Bacteria Total Minimum Daily Load requirements has historically contributed to the county's grades being well below the state average, although not all of the county's water quality problems can be attributed to the sampling location, according to Heal the Bay.

BY BILL KOENEKER

The Aquarium AGE

The Week of May 28–June 3, 2009



The planets are in transition this week, and so are we. Some of us are steeped in preliminary work, setting the stage for what lies ahead, but wishing for more time. Others of us are already hip-deep in organizational details, unable to postpone action, despite all admonitions about Mercury retrograde. Even more are feeling the consternation of patience, waiting like a horse in the gate to simply get started, but for one reason or another the "race" keeps getting postponed. Most transitions tend to be uncomfortable, and this one is no different. The best way through is to gather your strength as best you can, and also to know, by this time next week, you'll already be in overdrive. Mercury goes Direct late in the day on May 30, so don't expect a strong forward push until Monday, June 1. While this retrograde hasn't lasted that much longer than other Mercury retrograde phases (they usually last about three weeks), it does somehow seem longer. Maybe it's the lengthening days as we approach summer, or maybe life just feels stretched. Or per-

haps this retrograde seems longer because during the entire retrograde, Mercury has been so bloody busy, a situation that continues even as the retrograde ends. This week, Mercury squares the ongoing Jupiter/Neptune/Chiron conjunction. And while this conjunction is generally idealistic, the square from Mercury could have tongues wagging but words failing to convey any actual meaning. Mercury also continues to sextile Uranus, a positive interaction with the potential to keep minds actively engaged in creative innovation, a condition that could prevent the Jupiter/Neptune/Mercury proclivity toward gossip. It's only the presence of Mercury that turns the Jupiter/Neptune/Chiron conjunction toward chitchat. On its own, this conjunction is all about an expansive idealism aimed at generous, humanitarian endeavors. It's basically just what's needed, given our current global circumstances, because this is the type of astral configuration that supports positive efforts to make the world a better place to live. Chiron's participation can skew the interpretation of this conjunction in along several storylines. First, Chiron indicates the need to acknowledge and address the wounds of our collective greed. Next, Chiron signals the need to shift out of the idea that we are driven by animal appetites, which is the justification for the idea of the survival of the fittest. Third, Chiron also indicates that it's time to

release personal and collective identification with your wounding and move into an identification with our healing—and I'm don't mean the rapture. I'm talking about taking the very real knowledge we have about what we need to do to make the world a better place for all of its inhabitants and put it into motion. Chiron's presence is about concretizing our ideals through action. The time for talking about change is done. As the week unfolds, Mars moves into a trine with Pluto, a configuration that translates into extraordinary amounts of energy, and another reason the astral transitions of the week are uncomfortable. While it won't be easy waiting until the retrograde is over, be patient, and by Monday, the shift will feel solid and smooth.

If you know your ascendant and/or your moon sign, read that too.

Aries (March 21-April 19): The good news is there is too much to do. The best news is you can handle it. So rather than complain about the increased workload, welcome it. Embrace this phase and you'll enhance your success.

Taurus (April 20-May 20): Hiding in the shadows isn't an option, so rather than waste your time and energy attempting the impossible, allow yourself to shine. Yes, you'll receive a lot of attention, but you deserve the recognition.

Gemini (May 21-June 21): It's still important to pay attention to the details. And it is also important to rest. Make time to recuperate and you'll replenish important and necessary reserves.

Cancer (June 22-July 22): Positive interactions with significant others, personal as well as professional, facilitate a shift not only in attitude, but also in results. Do your best to unite your team and you'll be pleased with the results.

Leo (July 23-August 22): Be prepared to experience renewed enthusiasm about your career, and also expect to feel reinvigorated about your prospects for success. It will take a lot of hard work, but you are definitely motivated to succeed.

Virgo (August 23-September 22): Continue to concentrate your efforts on the tasks at hand, and despite what could be called "recent setbacks" you will make steady progress. Believe in your capacity and capability, and others will as well.

Libra (September 23-October 22): Strengthen your internal center, and you'll have a much easier time establishing and maintaining your equilibrium. This is not about a rigid stance; it's about taking the time to be with your thoughts and desires.

Scorpio (October 23-November 21): Meaningful conversations with friends and partners, personal or professional, will help you to clarify what you want, as well as what you need. Listen with an open heart and speak with the same integrity.

Sagittarius (November 22-December 21): Focus your efforts on work, and the financial gains will follow. While I can't promise a miracle, there are opportunities to find real, and much-needed solutions.

Capricorn (December 22-January 19): You're riding a strong creative current that feels powerful and comfortable, all at the same time. Enjoy this strength, and put it to good use finding positive solutions to several problematic situations.

Aquarius (January 20-February 18): Spend your intensity creatively, and you'll feel revitalized and renewed. Not every project will be a "hit" but you won't care because the process will be completely satisfying.

Pisces (February 19-March 20): Conversations with friends have the power to inspire a new approach to issues of self-esteem. If you're willing to be honest with yourself, you'll receive the necessary feedback to make lasting changes.

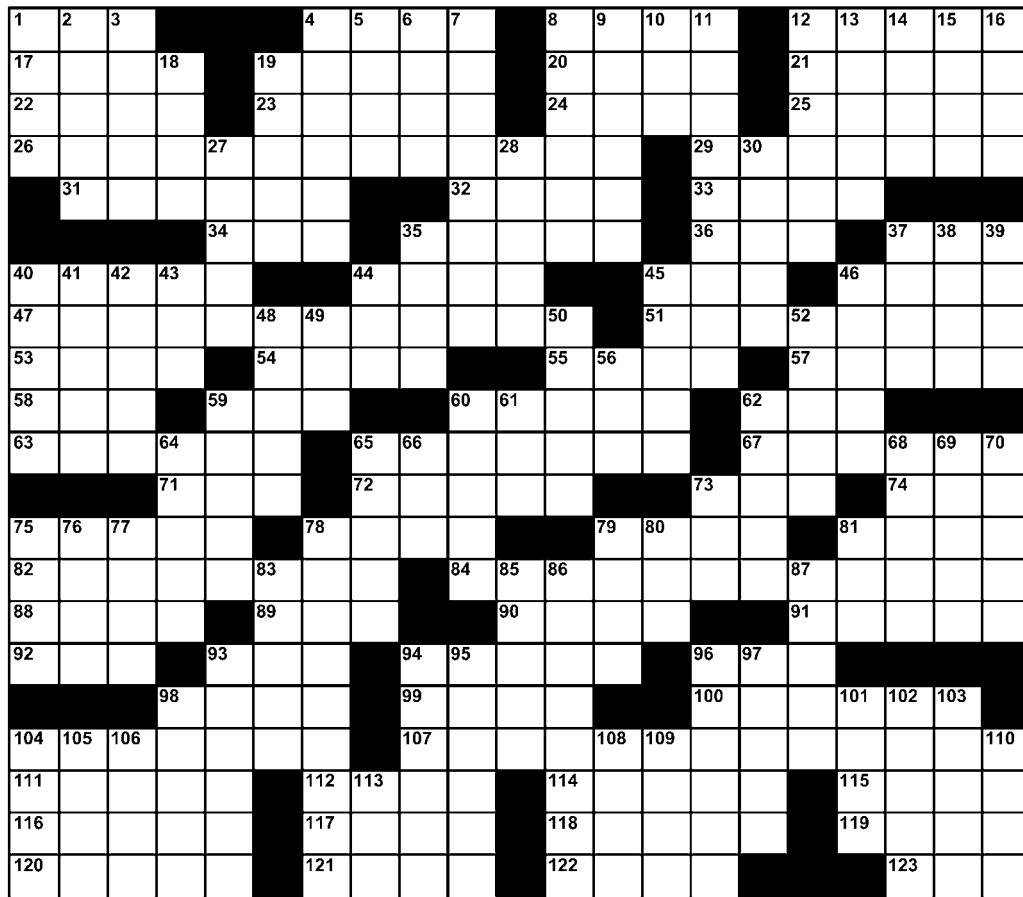
The PUZZLE

Go West!

Edited by Linda and Charles Preston

ACROSS

- 1 Low, in Toulouse
- 4 Mini-beds
- 8 Nimbus
- 12 Embroidery tie
- 17 Responsibility
- 19 Rack and ruin
- 20 Temptation location
- 21 Trencherman
- 22 Unchanged
- 23 Stadium
- 24 Flings
- 25 "___ for Adano"
- 26 Stuart Whitman TV series
- 29 John Smith TV series
- 31 Goldwyn or Gompers
- 32 Bakery buy
- 33 Be an accomplice
- 34 Married Mlle.
- 35 Characters in "Medea"?
- 36 Mideast letters
- 37 Maple juice?
- 40 Astringent
- 44 Copley or Austin
- 45 Certain NCO
- 46 Hors ___: brandy designation
- 47 Gene Barry TV series
- 51 Nick Adams TV series
- 53 ___ for one's money
- 54 W. alliance
- 55 "L'___, c'est moi"
- 57 Lose one's tail?
- 58 Part of PST
- 59 Lave the linoleum
- 60 Refrigerant
- 62 Stadium shout
- 63 Country-music show
- 65 Chuck Connors TV series
- 67 Zuni and Zulu
- 71 Whichever
- 72 Despicable
- 73 "ER" extras
- 74 Actress Thurman
- 75 Muse with a lyre
- 78 Reacts to soaps?
- 79 Tony's cousin
- 81 Early Brit
- 82 James Garner TV series
- 84 Barbara Stanwyck TV series
- 88 Spring flower
- 89 Roby Roy's refusal
- 90 Sealed a deal
- 91 Winona, of "Little Women"
- 92 Spearheaded
- 93 Coat part
- 94 Singer Simon



©2009 Tribune Media Services, Inc. All rights reserved

5/28/09

- 96 Salutation word
- 98 Warm-up
- 99 Actor Morales
- 100 Babbled
- 104 Clint Eastwood TV series
- 107 Jeffrey Hunter TV series
- 111 Hood's "handle"
- 112 Zeus' mom
- 114 Magnificent number
- 115 Hi there, sailor!
- 116 Dotty inventor?
- 117 Head set?
- 118 "___ Breath You Take"
- 119 Silver and Perlman
- 120 Dutch artist Jan
- 121 Action time
- 122 Sup in style
- 123 Diocese

DOWN

- 1 Pear
- 2 Catalan Anna
- 3 ___ cum laude

- 4 King or Lombard
- 5 Hot spot?
- 6 Oodles
- 7 Sows seeds
- 8 Flight
- 9 Gets used to
- 10 Part of a journey
- 11 Attack
- 12 Safari worker
- 13 Morocco's capital
- 14 Article
- 15 Submarine base?
- 16 Agatha's colleague
- 18 Line of clothing?
- 19 Seraglio
- 27 Latin dance
- 28 Proportion
- 30 Let up
- 35 It's nothing
- 37 "Elephant Boy" actor
- 38 Hoary
- 39 Brazilian kicker
- 40 Embarrass
- 41 Garcon's offering
- 42 Chopin
- 43 DDE's veep

- 44 Asian holiday
- 45 Lose a lap?
- 46 Shah Jahan's city
- 48 Like Buffalo winters
- 49 Faucet
- 50 Indigent
- 52 Parents
- 56 Shoe part
- 59 Lord's lair
- 60 Gounod opera
- 61 See 73 Across
- 62 Eccles. title
- 64 Can't stand
- 65 Guy, in Gloucestershire
- 66 Pinch
- 68 Physique
- 69 Roast host
- 70 Goatish gambler
- 73 Excavate
- 75 Runner Zatopek
- 76 Seldom seen
- 77 Eager
- 78 Moved like a squirrel
- 79 Heed

- 80 "The Price is Right" offer
- 81 Thickness
- 83 "The Woman ___"
- 85 Grant's first name
- 86 Surpassed
- 87 Pianist Claudio
- 93 Up
- 94 Singer Peter
- 95 ___ as falling off a log
- 96 Earth, e.g.
- 97 Incongruous state
- 98 Part of a process
- 101 Nicholas or Peter
- 102 Cultural character
- 103 "Lorna ___"
- 104 Merino males
- 105 That's ___ of baloney!
- 106 Fence material
- 108 Stubbs or Strauss
- 109 Like Steven
- 110 AMEX rival
- 113 Possessed

BY RALFEE FINN

Copyright © 2009

Overnight Camping

(Continued from page 2)

verberated far outside its borders and the CCC meeting is sure to be packed with environmen-

tal groups and other organizations viewing Malibu's stance as an elitist attempt to keep people out.

For their part, Malibuites see the argument fashioned by an element of public safety since three fires have scorched the community in one year and the yearround threat in a high fire hazard area should be sufficient reason to not allow camping and campfires.

BY BILL KOENEKER

SOLUTION TO LAST WEEK'S PUZZLE



Malibuite Exhibits Comic Skills in Summer Sequel Set at the Smithsonian

Much has been written about this sequel to the popular 2006 film "Night at the Museum." It was the first movie to film inside the actual Smithsonian Museum in Washington, D.C. It brought together the same cast as the original, along with some additional characters. And it is head over heels better than the original, which in this day and age is a feat in itself.

When a studio has a hit film, they will quickly put together another story to take advantage of the popularity, and more often than not, they just make a movie to capitalize on the popularity without giving any thought to the audience.

This time they did it right.

Malibuite Owen Wilson is smack in the middle of this story. "It feels good to be back," Wilson comments about his return to the character of Jedediah, the miniature cowboy. "We all had such a good time playing these wonderful characters in the first movie, we all became great friends, and it was exciting to see family audiences respond so well to it. So it was easy to return."

Wilson explains, "This story is a continuation of all the character's paths, but it's also a much bigger movie and you can see that Shawn (Levy, the director) has really grown."

About his miniature



LARGER THAN LIFE— Owen Wilson returns as miniature cowboy Jedediah in the second "Museum" film.

cowboy character who can fit in the palm of a person's hand, Wilson relates, "He's

just a little cowboy who can barely be heard screaming against the injustices of the world. What's great is that you can't be too over-the-top when playing a character this minute."

And it is this teeny, tiny, little fellow who puts all the characters back on track, summoning Larry Daley (Ben Stiller) from New York to Washington to help all his friends.

The film will undoubtedly spark interest in history among audience members, especially the very young. Amy Adams, who plays Amelia Earhart says, "Amelia Earhart is a true inspiration with her daring and her strength. She makes a perfect foil to

Larry, because she pushes him to remember who he really is, to see what's really important to him and to never let opportunities pass him by."

Hank Azaria plays the Pharaoh Kahmunrah, who Azaria describes as "the one guy you wish never woke up, an ancient villain bent on world domination."

Christopher Guest plays Ivan the Terrible. According to Guest, "He really was a very nasty guy, but I play him comedically, as a larger-than-life, psychotically crazy Russian guy who yells at people. It's not like any role I've done before."

And Robin Williams

returns as Teddy Roosevelt. "To be back as Teddy is wonderful," he says. "I'm a big fan of history—and of not repeating it. I love that this movie might get kids to ask who was Amelia Earhart or Teddy Roosevelt, and realize they're not just statues but were real people with fascinating personalities." From Williams' Teddy Roosevelt to Wilson's tiny cowboy, this film is filled with fun and fantasy. And add Oscar the Grouch, Darth Vader, Albert Einstein, and Abraham Lincoln and you've got the making of a fun summer movie.

BY FRANCINE BROKAW

Life STYLES

St. John's Offers Cutting Edge Procedures for Hip Problems

On any given day, Julie Firestone can be found walking the golf course (18 holes), walking through the cobblestone streets of Italy or Greece, or running up and down the family home's 18 stairs, up to 30 times a day as she chases her three young children. She says she does it all pain-free after hip-preserving or partial hip replacement surgery. Firestone is 36; her surgery was nearly 10 years ago.

Born with congenital bilateral hip dysplasia, Firestone spent the first four and a half years of her life in a cast because her acetabulum, the socket in the hip, wasn't completely formed.

"I was a breach birth, but the doctors knew immediately that something was wrong," said Firestone. "My feet were positioned up by my ears, which simply wasn't natural."

To correct the problem,

doctors put her in a body cast that had to be changed every six weeks. When the casts were finally removed, Firestone had no muscle tone, no flexibility. Her mother enrolled her in a tumbling class and Julie Firestone began to heal.

"My first memory from childhood is riding a big wheel," she said. "I didn't walk until I was five. But as the years went by, I also became very good at gymnastics. That tumbling class set the stage for the next phase of my life."

Firestone became so good at gymnastics that she eventually earned a full, four-year scholarship to Southern Utah University, where she became the first ever to qualify for post-season competition. But the casts from her infancy hadn't solved her acetabulum problem. In fact, she fractured her acetabulum

during her years of competition. Throughout her teenage years and into her early twenties, she experienced severe pain and could hear "lots of clicking sounds" when she moved.

Flash forward a few years into the future, when Firestone was an X-ray technician, working for two orthopedic surgeons. At 25, she was no longer participating in gymnastics, but living with debilitating pain on a daily basis. She also happened to have a set of X-rays that had been taken years ago. Her bosses both looked at the film, independent of one another, and both told her to see Dr. Joel Matta, an orthopedic surgeon at Saint John's Health Center in Santa Monica and a pioneer in periacetabular osteotomy, or PAO, surgery.

"Dr. Matta wanted me to have surgery right away," Firestone said. "But I had

just gotten engaged and I wanted to walk down the aisle. I didn't want to do it on crutches!"

Eight months after her wedding, in January 1999, Julie Firestone underwent a periacetabular osteotomy, a procedure that preserves the patient's own hip, thereby preserving the natural joint as well as self-maintenance capabilities so that the patient can remain as active as their normal life permits.

"Periacetabular osteotomy is a procedure that can fix a shallow hip socket, as was the case with Julie Firestone," explained Matta. "Our goal is to take an abnormal hip and make a normal hip."

PAO preserves and enhances a patient's own hip joint rather than replacing it with an artificial part. The goal is to alleviate pain, restore function and maximize the functional life of a

dysplastic hip. The procedure cuts the bone around the hip socket, detaching the acetabulum, which is then rotated into a new position.

"I have a couple of pins and screws, but it's all my own bones," said Firestone. "My own acetabular, my own femur."

The PAO procedure was developed in 1984 in Switzerland. Matta has been performing this type of surgery since 1987.

Firestone said "I was on crutches for six weeks. Within three months of the surgery, I was at 30 percent weight bearing, and it only got better after that."

Now, nearly ten years later, Julie Firestone is pain-free and the mother of three healthy children, though her middle child, her daughter, was also born with hip dysplasia. She was put into a soft brace just after birth—

"like suspenders attached to loops"—that held her feet open. As of today, at the age of five, she's just fine, her mother says.

As is Julie Firestone, who readily credits Matta with changing her life.

"Five months after my surgery, I was walking the cobblestone streets of Italy," she said. "I've traveled to Turkey, Greece, Russia. All places where I needed to be able to walk. Without this surgery, I wouldn't have been able to march forward and experience life-changing events."

Like taking her son to baseball practice, her daughter to dance class and her youngest to the park; like chasing them all up and down the stairs. Like living a lovely, happy, fulfilling pain-free life.

"That's a walk definitely worth taking," she said.

Trancas Park Council Debate

(Continued from page 3)

flat area reduced the size of the sports field, realigned the road way and reduced the number of parking spaces to 35.

Goldman said he took his inspiration from Malibu West residents who said the park needs to fit the lay of the land rather than moving the mountain.

Goldman also talked about how the plan eliminated all of the grading changes that would at the same time lessen construction costs by over \$1 million. He said the only amenity that would be reduced in size is the sports field by 30 percent.

Earlier, the council had debated back and forth about the two plans and what were their pluses and minuses.

Conley Ulich talked about how the city's Master Recreation Plan had no mention of a dog park and the higher priority was a teen center. She said the money could be spent for a better cause.

Barovsky said she wondered if park supporters would show up to endorse the Goldman plan since they had basically created their own at the design workshop. "The reductions were the result of the workshop. Everybody was compromising on one side," she added.

Questions were asked about the cost of engineering plans for the Goldman design, but Wagner reminded everyone that the city still had to pay for the costs of working up engineering drawings for the alternative plan.

At the end of the evening, just before the vote, shouting started between members of the council and individuals in the audience, and the mayor, who several times lost control of the hearing, more than once had to yell out to call the meeting to order.

BY BILL KOENEKER



MALIBU CHUMASH VILLAGE

A community-based, non-profit 501c3 organization utilizing Native American values to restore, preserve and sustain California's cultural and historical natural resources

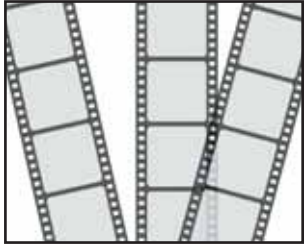
Please support Wishtoyo Foundation's historic Chumash Village at Nicholas Canyon County Beach on PCH! DONATIONS ARE TAX DEDUCTIBLE!

Mail to: 3875-A Telegraph Rd., #423, Ventura CA 93003 805.658.1120
Village: 464.644.0088 www.wishtoyo.org



Malibu A and E

Summer Movie Season Is Looking 'Up' with Four Fantastic Films



★ ★ ★ ★ ★

It's summertime at the movies. Hollywood and off-Hollywood have stockpiled a ton of early-season options, from Terminators and Trekkies to real-life porn star **Sasha Grey** going mainstream in **Steven Soderbergh's** 77-minute curiosity "The Girlfriend Experience." By casting the criminally underemployed film critic **Glenn Kenny** as a blogger who calls himself "The Erotic Connoisseur," Soderbergh says more about the current state of movie journalism with this experiment than he does about men, women, sex and money, an approach that may create unfulfilled expectations among those who know Grey from her other movie work. I was not the only one in the screening room scratching my head as the lights went up.

As we in Malibu navigate our own May Gray into June Gloom, this weekend sees the release of four of the best movies I've seen this year – two from Hollywood, one from Japan and

one from France – that also share a fascination with, and derive their narrative power by contemplating, the ramifications of life's end. Yet, somehow, none of these movies are even remotely depressing.

Since when do cranky old men make great adventure heroes? To find out, I took my seven-year-old neighbor **Luke Mickens** to a screening of the new Disney/Pixar sensation "Up!" that was presented in 3-D at the El Capitan. Wearing the Elvis Costello-esque glasses, Luke and I were both psyched as the curtain went up. But the melancholy tone of the first reel – wherein we learn that the cranky old man once had a boyhood crush on a girl named Ellie, whom he married, but with whom he could not bear children, and who dies first, leaving him alone – had me worried. But then the old guy teams up with an adorable kid for a first-class adventure that Luke would later call "fun, and sort of scary." Luke also said the main character reminded him a little bit of his own grandfather, and that some scenes might be too intense for littler kids, like his three-year-old brother **Patrick**. It gives nothing away to imagine the old man's gingerbread Victorian, borne aloft by thousands of colorful



DEPARTURES—Masahiro Motoki as Daigo Kobayashi, left and Ryoko Hirose as Mika Kobayashi.

Photo Courtesy of Regent Releasing / Here Media

helium balloons, meeting a certain fate. Indeed, the film's most poignant moment comes when the old man is able to let go and say, "It's just a house."

drama from acclaimed French auteur **Oliver Assayas**. The film is structured around the summer reunion of a large family at their mother's home in the



SUMMER HOURS—Charles Berling as Frédéric, Max Ricat as Max, Juliette Binoche as Adrienne, Isabelle Sadoyan as Eloise, Alice de Lencquesaing as Sylvie and Dominique Reymond as Lisa. Directed by Olivier Assayas.

Photo: © Jeannick Gravelines

End of life issues of the material stripe also dominate "Summer Hours," the exquisite, delicate family

countryside at which she acknowledges her advanced age and tries to impress upon one son in particular

how she wants certain possessions – like her priceless art nouveau desk – to be dealt with when she's gone. Francophiles will swoon over interiors shot at the Paris Musée d'Orsay and revel in the picture's slightly ambiguous ending that sees the possibilities of youth breathing new life into old masonry. But any moviegoer with a love of smart acting and authentic emotion will find much to appreciate here.

Same goes for "Departures," a terrific movie hiding behind a bland title that may have kept it under the pundits' radar in advance of the Academy Awards, where it was the surprise winner in the Best Foreign Language Film category. "Departures" reflects a job—no, more of a calling—that the main character takes up after the Tokyo orchestra for which he has played classical cello is suddenly dissolved. Like HBO's "Six Feet Under," "Departures" has a keen eye for the ironic ways death can strike and a healthy appreciation for how ritual and tradition figure into grieving and, ultimately, healing. I saw "Departures" with my mother at a screening in Santa Monica, and we spent the whole drive home talking about how much we both loved it. In a way, I'm glad she was my guest at

"Departures" and not at "Summer Hours." Mom's already had the "when I'm gone" talk with me, and I don't really want to have it again.

Finally, no discussion about life and death in the current cinema would be complete without high praise for "Drag Me To Hell," the new shocker from master **Sam Raimi** ("Spider Man"). A loud, bombastically-scored and above all messy battle royal between a nasty old crone of a gypsy (a brilliant **Lorna Raver**) and a waif-like Los Angeles loan officer fearlessly played by **Alison Lohman** (and featuring a likeable but clueless **Justin Long** as her boyfriend), "Drag Me To Hell" is as much gross, silly fun as a food fight and showcases the best sound design I've heard since "The Soloist." Forgive me, but I had a blast.

"Up" and "Drag Me To Hell" open wide on Friday. "Departures" opens Friday at the Arclight on Sunset and at the Landmark on Pico. "Summer Hours" opens at the Laemmle Royal on Santa Monica Blvd. in West LA and at the Town Center in Encino. You can also access "Summer Hours" on demand at IFC's "In Theatres" program on Charter Digital.

BY JEREMY WALKER

Check out the
 electronic version of the
 Malibu Surfside News at
www.malibusurfsidenews.com
 Get ALL the local news and
 photos from the
 newsstand edition!

MALIBU *Beach, Canyon & Mountain*

R E A L E S T A T E

Let the Sunshine in...
 Business days will never be affected by low clouds or the marine layer when you get out the word in the Malibu Surfside News on a regular basis...
 Call 310-457-2112 for more information...and get ready to shine.



Malibu Townhome
\$710,000
 2+1.5, 1,007 Sq Ft
 Zumirez View
 28711 PCH, #12, Malibu 90265



Malibu Townhome
\$650,000
 3+2, 1,540 Sq Ft
 Malibu Gardens
 6452 Cavalleri Rd., Malibu 90265



Malibu Bay Club Lease
\$3,500/mth 8/16-11/15
 Furn. 2+1.5, 1,044 SqFt
 11874 Ebbtide Ln., Malibu 90265

Call/Text: 1-310-344-7477

Email: [Travis@](mailto:Travis@MalibuRealEstateBrokers.com)



CA DRE Lic# 01518180

FEATURED HOMES

SUSAN
 MONUS



DISTINCTIVE
 MALIBU HOMES AND
 ESTATES



SHOWCASE PROPERTIES

Serra Retreat with Gym and Boardroom \$12,950,000



www.casaesperanzamalibu.com

Point Dume Hidden Treasure \$3,895,000



www.wandermereroad.com



Prestigious Properties for Distinguished and Discerning Clientele

Featured Homes	Call for Additional Properties
PALISADES BEACH ROAD	\$15,999,000
SERRA RETREAT WITH POOL	\$12,950,000
ARCHITECTURAL TRIUMPH ON THE SAND	\$10,750,000
MASTERWORK OF ARCHITECTURE/DESIGN	\$ 7,900,000
PT. DUME HIDDEN TREASURE	\$ 3,895,000
REDUCED! POINT DUME COMPOUND	\$ 3,700,000
TROPICAL PARADISE IN MAILBU	\$ 3,400,000
ULTRA-HIP LA COSTA TOWNHOMES	\$ 2,995,000

Featured Homes	Call for Additional Properties
POINT DUME RANCH	\$ 2,199,000
OUTSTANDING OCEAN VIEWS	\$ 1,695,000
PT. DUME TOWNHOME W/ BEACH KEY	\$ 1,400,000
BEST HOME BUY!	\$ 1,295,000
Estate Land	Build Your Dream Home in Malibu
REDUCED! OCEAN VIEW LAND W/PLANS	\$ 925,000

Homes for Lease	Live the Malibu Life
MALIBU COLONY BEACH	\$ 110,000 per month
PALISADES BEACH ROAD	\$ 65,000 per month
ARCHITECTURAL TRIUMPH	\$ 50,000 per month
MALIBU ROAD	\$ 40,000 per month
ENCHANTING CHATEAU	\$ 25,000 per month
LA COSTA TOWNHOMES	\$ 6,500-5,500 per month
PANORAMIC VIEWS	\$ 5,000 per month
PT. DUME TOWNHOME W/ BEACH KEY	\$ 3,800 per month

See More. Learn More. Visit www.SusanMonus.com • 310.589.2477 • susan@susanmonus.com

©2008 Coldwell Banker Real Estate LLC. Coldwell Banker®, Previews®, and Coldwell Banker Previews International® are registered trademarks licensed to Coldwell Banker Real Estate LLC. An Equal Opportunity Company. Equal Housing Opportunity. Owned And Operated By NRT LLC. Broker does not guarantee the accuracy of square footage, lot size or other information concerning the condition or features of property provided by seller or obtained from public records or other sources, and the buyer is advised to independently verify the accuracy of that information through personal inspection and with appropriate professionals.

MALIBU *Beach, Canyon & Mountain*

R E A L E S T A T E

RE Spotlight

Malibu Author to Discuss Book on Santa Susana Field Laboratory



William Bowling and co-author Christina Walsh

Diesel, bookstore in Malibu has announced it is "excited to present William Preston Bowling and Christina Walsh as they discuss their book, Santa Susana Field Laboratory." This event is free and all are welcome on Sunday, May 31, 2009 at 3:00 p.m.

The author's website states that "activism, in a general sense, can be described as intentional action to bring about social, environmental or political change. This action is in support of, or opposition to, one side of an often controversial argument."

"On May 9, 2008, in a unique and unprecedented collaboration with Christina Walsh, we opened

the Aerospace Cancer Museum of Education (ACME), as a center where community members can learn about Santa Susana Field Laboratory and the historic clean-up initiatives to take place as recently directed by Governor Arnold Schwarzenegger, brought forth by Senator Sheila Kuehl and assembly member Julia Brownley," a press release states.

ACME's goals are to organize and activate a public hungry for accurate information about this and other astronomically polluted nuclear and aerospace research sites.

For more info on the Aerospace Cancer Museum of Education, visit their website acmla.org

**MALIBU
REAL
ESTATE
INVEST
IN
LIFE**



Stunning Contemporary Home in Tranquil Ramirez Cyn. Surrounded by Over 2 Beautifully Landscaped Acres
\$2,960,000 www.ViaAcero.com



Fabulous Gated Country English Estate on Approx. 4.2 Ocean View Acres w/Pool, Tennis Court, Guest Houses
NEW PRICE: \$6,800,000



The Extraordinary Tin House Farm, a Frank Gehry Home w/Pool, Spa & Barn on Over 3 Magnificent Landscaped Acres
\$7,777,000 www.TinHouseFarm.com



Buff & Hensmen Beach House on Dry Sandy Beach w/Beach Cabana, Spectacular Ocean Views \$6,995,000
www.41700PCHMalibu.com



Serra Retreat Approx. 3 Acre Ranch w/Permits for Great Remodel
NEW PRICE: \$5,950,000
www.PalmCanyonLane.com

ELLEN FRANCISCO
MALIBU PROPERTIES

29178 Heathercliff Road
Malibu, CA 90265

Ellen Francisco
310.589.2464

MALIBU
www.EllenFrancisco.com



Immaculate Architectural Home w/Pool, Spa, Walls of Glass, Magnificent Coastline Views, Easy Beach Access \$9,300,000



Beautifully Redone, Spacious Malibu West Home w/Beach Club, Tennis, Privacy
NEW PRICE: \$2,195,000



Meticulous Bluff-Front Home w/Pool & Sweeping Coastline Views
NEW PRICE: \$7,250,000
www.33744pch.com



Charming Custom Re-Built Home w/Gorgeous Ocean & Mountain Views Overlooking Zuma Canyon
NEW PRICE: \$2,495,000

MALIBU PROPERTIES FOR LEASE

Gorgeous Malibu Cove Colony Summer Lease: \$45,000/mo
Spacious Bluff-Front 6 BR, 5 BA, w/Pool & Spa: \$25,000/mo
Dramatic Broad Beach Bluff Home w/Pool & Sauna: \$20,000/mo or \$45,000/mo Summer

Serra Retreat Home on 3+ Landscaped Acres w/Stables, Arena: \$17,500/mo
Spectacular Coastline Views Overlooking Encinal Bluffs: \$11,200/mo
Stunning Ocean-View 3 BR Home Overlooking Beautifully Re-done 2 BR Zuma Bay Villa: \$4,900/mo
Broad Beach Road 3 BR Ranch Home: \$7,200/mo

MALIBU *Beach, Canyon & Mountain*

R E A L E S T A T E



Isabel Miller
310-456-RENT
RENTALS

REDUCED!.....\$2100/mo. CORRAL CANYON. Clean 2+1.5' 2.5 mi. to beach nestled in peaceful beautiful setting. Lvg rm open-beamed ceiling, lrg windows w/ spec. mtn views, a cozy fireplace adds charm. 2 decks for entertaining. Tons of closet space!

REDUCED!.....\$3000/mo. MALIBU VILLAS TH. Perfect for students, close to Pepperdine & beach. Spacious 3 bd., 3 ba., updated kitchen, move in ready! 2 car garage, complex incl. pool, spa. Unf. 1 yr.

\$4850/mo. LA CHUSA HIGHLANDS. Astounding 180 degree ocn vus from most rooms. 1 level spacious 3 + family rm., 2.5 ba. home! Custom cabinetry, ocn vu lanai, pvt patios w/ spa. (Just 1/2 mi off PCH) 1 yr. lease, unf.

\$7500/mo. ESCONDIDO BEACHFRONT COTTAGE. "Maui in Malibu" 1950s beach hse updated & furnished in "Hawaiiana." Cozy 2+2 w/ofc. on wide sandy bch. Kick back on spacious decks or cuddle in front of the brick fireplace. Pet OK. Summer months @ \$15,000.

\$10,250/mo. BEACH CLUB WAY. 3-level 3 + 3 vacation paradise fully furn TH. Exclusive gated Malibu Bay Club. All levels have amazing whitewater views & balconies.

\$20,000/mo. CARBON BEACH. Truly classic California Bch house! Relax on Malibu's premier Carbon Beach. 1 story, 3 + 3 hm. on 50' of wide sandy bch. Huge deck, master on water, immaculate & fully furn. Avail short or long term lease til June '09. No pets please.

NEW!! \$20,000/mo. MALIBU ROAD. Stunning bchfrnt cottage! Extensively redone & restored 2+2 +bonus rm. Luxurious furnishings & all of the original vintage charm blended with today's amenities! Perfect for celebrity & the "5 Star finicky!"

\$35,000/mo. MALIBU COVE COLONY. Absolutely fabulous contemporary beach house in gated, guarded private street. 3 bdrms 3 bath, all bedrooms on the water. Open floor plan with huge windows.

\$45,000/mo. MALIBU COLONY-SUMMER RENTAL in the famed Malibu Colony inside the gates! 5 bdrm 5 ba. avail. June 15 to July 14 or Sept & October. Older, charming, comfortable 2 story. Privacy, flowers & gardens too!

310-456-RENT



*When Malibuites
are ready to move
to a new home,
which they do
often, they
appreciate the
hometown approach
to the local lifestyle
found in the
Real Estate Section
of the Malibu
Surfside News*



DAVID CARTER
310.456.6271 (Direct) • 310.980.4434 (Cell)
www.MalibuMobileHomes.com **PR** Pritchett-Rapf
realtors

PARADISE COVE MANUFACTURED HOMES-Malibu

STEPS TO THE BEACH: Great little home for year-round living or vacation get-away. 1+1, nicely remodeled, singlewide. Fenced, decks. Fully furnished. \$ 279,000

SUNNY LOCATION: Nice creekside 2+1 beach getaway. Large prvt back patio, just 250 yds to the sand. & surf. Custom remodel, wood flrs & room to build. Incl furnishings. \$ 325,000

FANTASTIC CUSTOM HOME: 1 bd + 1 ba, just steps to the beach. Fully furnished. Hardwd floors, stone bathroom, everything perfect. \$ 345,000

GREAT VALUE: Charming & cozy 2+1 beach-level cottage. Over 1,100 sq. ft., private and sunny. Front porch, parking alongside, backyard & deck. \$ 395,000

LOCATED CREEKSIDE: Newer 2 bdrm, 2 bath home, fully furnished. Front and back decks. Good parking. Ready to go! \$ 475,000

AFFORDABLE, NEWLY RENOVATED DOUBLEWIDE: 2 bd + 2 ba and bonus room. Upper level location. Light & bright, large fenced yard. Ready to move into. \$ 475,000

CUSTOM BUILT BEACH HOUSE: 2 bedrooms, loft, 2 bathrooms, wood & tile throughout. Patios, fenced, private setting and spa tub. 2-car parking. \$ 495,000

EXTRA-LARGE: Private & fenced, landscaped yard with lawn. 2+2, high ceilings, covered patio and deck. Great value. *In Escrow* \$ 545,000

WHITewater OCEAN VIEWS: 150 yards to the sand! Total custom 2+1 beach home. High ceilings, tile & wood floors, decks, grass yard. \$ 655,000

NEWER MODERN HOME: Located upper level. 2 bedroom, 2 bath, tile & granite, high ceilings. Extra 3rd bedroom/den. Some ocean view. Immaculate condition. \$ 740,000

MODERN FRONT ROW HOME: Newer 3+2, trees, cyn & distant ocn vu. Hi-ceilings, drywall, wood & tile. Sep fam rm/den, fp, decks, spa, fenced yard. 3-car pkg, near bch trail. \$875,000

NEW CUSTOM HOME-BLUFF LOCATION: 3 bd + 3 ba, 2,100 sf, with loft and garage. Huge landscaped lot, fenced and private. \$1,450,000

FABULOUS OCEAN COASTLINE VIEWS: Newer 3+3, 2,000 sf home. Bluff location. High ceilings, fireplace, private, fenced, decks. \$2,100,000

ULTIMATE BLUFF LOCATION: Incredible ocean and whitewater views of Santa Monica Bay. Stunning 3 bd+2 ba home with 2,200 sq. ft. of luxury. *In Escrow* \$2,700,000

POINT DUME CLUB MANUFACTURED HOMES-Malibu

GREAT OPPORTUNITY: Lg 3+2 with small ocn & mtn vus. 1,650 sf, fp, appliances, bonus rm, fenced backyard. Needs upgrading. Reasonable space rent. Won't last! \$345,000

BEST VALUE IN THE PARK: Low asking price & low space rent. Extra-lg, 1,540 sf, 2+2 Mtn vus, grassy common area behind. Nice back patio. Sep LR & fam rm. Needs TLC \$345,000

PANORAMIC OCEAN & MOUNTAIN VIEWS: Very private 2+2 with bonus rm/ofc, 1,550 sf. Nice flr plan, wood flrs, secluded deck. Lovely garden & fruit trees. \$ 399,000

BEST PRICE HOME: 2+2 in a sunny location near beach gate. 1,550 sq. ft., decks, backyard, patio. Ready to move into. Low space rent. \$ 435,000

AFFORDABLE OCEAN VIEW HOME: 3 bdrm + 2 bath + office and craft room. 1,750 sf, nice sunny decks and fenced yard. Low space rent. \$ 435,000

CLOSE TO BEACH EXIT: Outstanding ocean view 2+2. Nice open floor plan, wood flrs, big wrap-around deck with ocean, sunset & mountain views. \$ 495,000

SPANISH ADOBE-STYLE: 3 bdrm + 3 bath, 1,750 sf home. Ocean and mountain views. Granite counters, Saltillo tile floors. Very open. \$ 575,000

OCEAN VIEW LUXURY: Newly built 3+3, custom 2,200 sq. ft home. Stone & travertine tile floors, gourmet ktchn. Large glass sliders to open decks. Fully landscaped. \$1,250,000

SEMINOLE SPRINGS MANUFACTURED HOMES-Agoura Hills

RESIDENT OWNED PARK: Affordable 2+1 on large lot w/mtn vus. Drywall, wd flrs, tile bath, open ktchn, 2-car pkg. Park incl s fishing lake, club hse, pool, spa, gym... \$ 149,000

FANTASTIC MOUNTAIN VISTAS: Great location! 2 bed + 2 bath, 1,700 sq.ft. home, on a large lot. Hardwood Floors, bonus room, high ceilings. *In Escrow* \$ 249,000

NEW CUSTOM BUILT HOME: Environmentally designed 2+1 1/2 & lofts. Mtn vus, sep art studio, koi pond, waterfall, fire pit, walkways & decks. Fenced yard. \$ 275,000

Good Financing Available!

For all your local news, visit
www.malibusurfsidenews.com
Malibu's only real
online newspaper

GAYTON PLACE\$2,995,000 SERRA RETREAT\$6,350,000 VINEYARD ARCHITECTURAL\$3,395,000



5 Bedroom 6305 Gayton OPEN SUNDAY



5 Bedroom Plus Guest House



6 Bed/Pool

Terry & Gwen Lucoff 310-317-8391



THE MALIBU Marketplace

C L A S S I F I E D

ADVERTISING PROCEDURES

The rate for classified advertising is \$35 for 30 words or less. There is a charge of 50 cents for each additional word over 30. This ad copy plus payment may be mailed to MSN Classified Advertising, P.O. Box 903, Malibu CA 90265. Ads can be placed in person for the current week's issue until noon on Tuesday at our offices at 28990 Pacific Coast Highway, Suite C-116 (PCH and Portshhead Road, just north of Kanan-Dume Road).

For your convenience, ads may also be telefaxed to MSN at 310-457-9908 until noon on Tuesday for the current week's issue. The rate for all faxed ads, as well as all classified ads billed to open display advertising accounts (display ads in newspaper during current month), is \$35 for 30 words or less and 50 cents for each word over 30.

The News reserves the right to decline to publish any advertisement, to address objections in wording and to delete copy to match payments submitted with an ad. Submission of advertising copy to The News is not a guarantee of publication or an agreement for continued publication. The News is not liable for failure to publish an advertisement or for more than one incorrect insertion of an ad. Liability is limited to the cost of the advertising space only, with maximum liability being the cost of the first incorrect ad or republication of the correction.

All offices of The News are open Monday, Tuesday, Thursday and Friday from 9 a.m. to 5 p.m. and Wednesday from 9 a.m.-1 p.m. There is an ad copy drop-off box at the main MSN entrance for after hours use. For additional information about advertising in "The Community Forum of Malibu," contact 310-457-2112, 310-457-4235 or 310-457-NEWS (6397).

ANNOUNCEMENTS

VITAL ZUMAN SUSTAINABLE FARM

Think Globally, Volunteer Locally. Family Scaled Agriculture For Over Fifty Years Certified Naturally Grown Small Farm Fellowship Call 310-924-2210 To Volunteer Today! Harvested Daily: Wild, Gourmet Salad Bags, Sautee & Juice Greens, Bacon Avocados, Rangpur Limes, Valencia Oranges, Grapefruit, Whole Plant Flowering Arugala, Balsamic Lemonade, Basil-Infused Limeade, Dill Pickles, Banana-Fig Jam, Raw Green Almonds, Local-Raw-Wild-Honey, the Best, Clean, Natural Compost For Your Garden, and Much More. The Locally Grown Malibu Farm Co-op Continues to Grow. Open 10 a.m.-4 p.m. weekly. "Take a Break From Your day, Enter the Natural World, Go Home With Something Good."

VITAL ZUMAN SUSTAINABLE FARM
29127 P.C.H. at Heathercliff.
Right Turns Only in/out of the Farm.



Call All Local Agriculture Now :
310-924-2210

ASTROLOGY

RALFEE FINN



specializes in
Transformational Astrology.
For information about readings, call

1-888-937-9264

Write to Ralfee Finn at
Post Office Box 343
New York, NY 10025
You can visit her
web site www.aquariumage.com or
email her at ralfee@aquariumage.com

BOOKKEEPING

Need help with your bookkeeping, or with your QuickBooks or Quicken program? Call Tony, 310-455-3780.

0625

BRUSH CLEARANCE

All Valley Landscape

Acre Mowing • Weed Abatement
• Roto Tilling • Weed Discing

Brush Clearance • Sprinkler Systems
Spring Clean-ups • Full Landscape
Insured & Licensed C-27 662421

**Matt
(818) 609-0183**

0528

0625

BUSINESS OPPORTUNITIES

Malibuluxurydomains.com. Great domain names for sale. Feature Malibu, The Bu, Surfing, Hollywood, etc. Great for a new business or project, Realtors. Visit the site for more info. Malibuluxurydomains.com.

0528

EMPLOYMENT WANTED

You don't have the time to do your own errands? Call Liz at 818-857-1345.

0625

FIRE PUMP

Be prepared now—Why wait for the fall fire season. Complete fire fighting system consisting of a 6.5 horsepower 4 cycle gas motor, 1.5-inch 2-stage high pressure (100 PSI) low draw (60GPM), 50 feet of high pressure fire hose, nozzle, and an 8 foot intake hose with strainer. Requires a reservoir or swimming pool. \$589.00 prepaid to your door. Call 877-526-0069 to order or for additional information www.endurance-marine.com

0528

FOR SALE

Holiday Decorations. A dozen 2-foot tall electric animated Christmas display figures: Santa Claus, Mrs. Claus, workshop elves, children with gifts, carolers, etc. Also, another dozen or so Halloween figures: witches, crows, skeletons, costumes and more. Wigs. Best Offer. 310-457-4235.

0625

GARAGE SALES

Thousands of items! Books, adult clothing, jewelry, CDs, household items, furniture, sports collectibles, bobbin-head dolls, paper collectibles, Kershaw knives, TVs, glass, military surplus, lamps, medical supplies, much more. Sat. and Sun., May 30 and 31, 9 a.m.-5 p.m., 33360 Decker School Rd. NEB

0528

Summer Sale! Patio furniture, cameras, nature photography prints, books, baskets, shoes, clothing. Beaded wraps. Alpaca capes, sweaters, shawls, scarves. Sat., Sun., May 30-31, 9 a.m.-4 p.m., 27935 West Winding Way. Across from Paradise Cove. 310-457-4214.

0528

Furniture, women's clothing, books, kitchenware, misc. household items. Sat., May 30, 10 a.m.-3 p.m. 3874 Puerco Canyon Rd. Park on street.

0528

Moving sale. Color-coordinated home accessories, textiles, dishes, furniture, beautiful "vintage" table linens. Varied quality, used to new. "Malibu ranch casual" décor style. Sat., May 30, 8:30 a.m.-3 p.m., 29745 Harvester Rd., west of Busch.

0528

GARDENING

Calvin's Specialty Gardens. Rose gardens, container gardens, organic vegetable gardens, drought tolerant gardens, hummingbird and butterfly gardens, houseplant and garden maintenance. Call 310-460-8760 for free estimate.

0528

Garcia Gardening Service. Landscaping, maintenance, planting, clean-up, low-voltage lights, sprinkler systems, hauling. Everything your garden needs. Call Efen at 310-733-7414.

0611

GRAPHICS

Behrle Graphics

- Logos
-
- Brochures
-
- Layout & Design
-
- Photography
-
- Illustration
-
- Drawing and Animation

Reasonable rates

Richard Behrle
r_behrle@yahoo.com

310 280-8690
818 718-1172

0528

0604

0611

0528

LANDSCAPE

Are you tired of your mow-and-blow gardening work? We can help you. We can make a big difference. Also, we provide other handyman services. Contact 310-592-3497, arturogarcialand@att.net.

OFFICE SPACE

West Malibu office space at bottom of Kanan. Quiet, convenient, accessible. \$375/mo. 310-795-8867.

0604

OPPORTUNITY

Earth-minded passionate water-wise plant duo seeks investment in LA/SD green nursery. Thousands of succulents, drought-tolerant and unusual plants. Large mother plant collection for propagation stock. Access to 20-plus nurseries. Broker/install any kind of plant, small to large specimens. Hillside fire-wise garden design. 760-213-5021, 310-903-8800.

0611

PAINTING

All Seasons Painting. Spring clean-up specials. Kitchen cabinets, decks, garage doors. No job too small. Interior/exterior painting specialist. For free estimate, call Randy, 310-678-7913. License #571061.

0528

JOYCE

CUSTOM PAINTING

Commercial & Residential License

Interior & Exterior
Faux Finishes - Stain
Oil Paints - Sealers
Epoxy Coating - Lacquers

(310) 435-7551

★ ANIMAL STARS of the WEEK ★



"Cozy"

One of the sweetest girls in town, Cozy is a small three-year-old shepherd mix. Her tail never stops wagging. She loves to prance on the leash and cuddle in your lap. Submissive and gentle, Cozy is a wonderful addition for any family. #A1028988.



"Lancelot"

Big Lancelot is enchanting. Full of enthusiasm and a great hiking buddy, Lancelot is also content to lay in your lap for hours. A handsome St. Bernard-Rough Collie mix, Lancelot is a truly wonderful two-year-old puppy, adopt him at #A1031406.

"Cookie"



Cookie is a sweetheart. A baby at only a year old, she is a Dalmatian mix with the cutest ears. Cookie loves everyone she meets and is always ready with kisses. Her spots and dots make her irresistible. She is a keeper, adopt Cookie at #A1028523.



"Daisy"

"Shadow"

Daisy and Shadow are a mother and daughter. Daisy, a spaniel mix, now six years young, adores children. Gentle and happy, Shadow is three years of age, sweet and so fun. They give love and joy to everyone. Love them up and bring one or both home! Adoption # A1031288 & A1031290.

Neither The News nor any of the animal volunteers can determine the appropriateness of a particular animal for a prospective adopter.

Contact ANDREA for more information: franksable@msn.com 323-363-4909

SOUTH L.A. ANIMAL SHELTER • 888-4LAPET1 or 888-452-7381
3612 11th Ave. Los Angeles, CA. 90018 • www.LAAnimalServices.com

Find the
Lucky Star
in the ad
you placed in the
Malibu Marketplace
and
WIN
Two Tickets to
the Malibu Theatre!



THE MALIBU *Marketplace*

C L A S S I F I E D

REAL ESTATE

Industrial shops, "New" 600'-2400', for sale or lease. City of Oxnard (20-30 PCH minutes from Malibu), 10 x 12-roll door, office, bathroom, 15' ceilings. Vehicle storage OK. 805-486-8796. www.arcturusproperty.com

02410

REFINISHING

Master refinisher—revamp your old furnishings/interior with the things you love/have. Quick spruce-up at your place or total refinishing/restoration at mine. French Polish, Ebonizing, Pickling, Antiquing and other painted/wood finishes. Home staging decorating services also available. Malibu local. Free Estimates. 310-457-1048, 310-405-4111.

0604

RENTALS

FOR RENT

Ocean view condo. 2 bd., 2 ba. Pool, tennis, 2-car garage. Available now. \$2950/mo. **310-804-4062**

RENTALS

RENTALS

2 bed., 2 bath. Malibu Gardens. 2 car garage, pool, \$2500/mo.

2 bed., 2 bath, ocean view. Zumirez view condo, pool. 2 car garage, \$2800/mo.

TERRY LUCOFF
310-924-1045
Coldwell Banker

Southwest Contemporary, miles of trails. Buff and Hensman Award-winning architect. Vistas bonitas, private, peaceful, spacious, 4 1/2 acres, teak cabinets, horses OK, \$5350/mo. Pictures "A Southwest Home" are at <http://homepage.mac.com/randyn/> 310-457-4405.

0618

Guest cottage rental. Open floor plan, completely furnished, private patio with gas BBQ, fire pit. Walk to Zuma Beach, public pool and tennis courts. Perfect for one person. \$1500/mo. 310-457-2664.

0528

Agoura studio. Spacious, newly enlarged and renovated. Private, quiet. Large kitchen, deck overlooking lake. Beautiful location, nature all around. Quiet neighborhood, \$1250/mo. Utilities included. Available June 1. 818-706-0209.

0528

RENTALS

\$2495/mo. Prime location in Santa Monica, 7 blocks to beach. Very nice and spacious 2 bd. and convertible den, 2 ba., lower front 2 bd. and den. Front and rear entrances. Available now, 310-395-1495, cell: 310-666-8360.

0528

Pt. Dume house, 4 bd., 2 ba. Acre fenced yard. Pets considered. Lease \$4500/mo. Built-ins, tile and carpet floors. 310-457-4076 and 310-454-8927. Available June 1.

0528

Birdview 1 bedroom guesthouse. Kitchen, stove, refrigerator, fireplace in living room, Jacuzzi tub. New rugs, utilities included. Laundry room. No smoking, no pets. One person preferred. \$1700/mo. 310-457-9930.

0618

Cozy ocean view guest cottage, Malibu Park area. One bd., off-street parking, W/D, \$1600/mo., first, last, deposit. 805-708-6048.

0528

Walk to beach, Malibu West, creek side backyard, wood, glass, beams, fireplace, atrium, beach club, tennis, 3 bd., 2 1/2 ba., bonus room. \$5300/mo., 310-393-1818.

0604

Malibu Mountains House Reduced! 3 bd., 1 ba., spacious 2-car garage. Rare opportunity to rent in a unique private area. Hardwoods, huge walk-in closet, a/c, fridge, washer/dryer. Dog lovers fenced yard. \$2600/mo. Brad at 818-707-1804.

0604

RENTALS

Malibu, \$1295-\$1350/mo. Surfrider Beach. Ocean view studios. Newly remodeled, includes utilities, cable and parking. Laundry room on premises. 310-456-6559.

0604

Malibu, Entertainer's Delight. 3300 sq. ft. home on 8.7 acres with gourmet kitchen, 4 bd., 3 ba., sauna, 2 large decks, patio, 3 fireplaces, 3-car garage, beautiful ocean and mountain views. Year lease, \$5500/mo (sell for \$2,795,000). 310-579-7889 or email wellsroadsw@hotmail.com. Available July 1.

0618

Small 2 bd., 1 ba. guest house on 8-acre ranch 5 miles from beach up Yerba Buena Cyn. Very clean, available June 1. First and security, \$1800/mo. 310-457-1135.

0528

Point Dume. California bungalow. 3 bd., 2 ba. with office. 1640 sq. ft. Open beam ceilings. Completely rebuilt. 2 fireplaces. Stained glass. Hardwood floors. Tiled bathrooms. Gated Pt. Dume Club. Pool, spa, tennis. \$4800/mo. Lease/option. 310-924-1741.

0528

Summer rental on Point Dume. 2 bd., 2 ba. Super private and quiet, fully furnished with wonderful gardens and patios, close to beach access. Starts at \$1200/week. 310-457-4488, 310-612-0088.

0528

Gorgeous Malibu Rd. Upstairs beach apartment. Unique 1 bd., 1 ba., fireplace, breathtaking ocean view. Large private sun deck, private garage. W/D, all new appliances. Single person only, no pets. \$2500/mo. 310-456-2783.

0611

RENTALS

Ocean view duplex. Quiet, immaculate, 3+3+FP. Pergo floors, great room with wet bar. Knotty pine ceiling, laundry room, large patio, gated, 1 acre, fruit trees, parking, 1560 sq. ft. \$4000/mo. C: 310-850-9448; 310-457-4738.

0604

Magical house with spectacular ocean view! Stunning 2-acre property. Country lifestyle. 2 bd., den/3rd bd., 2 ba. Woodsy farmhouse kitchen, 2 fireplaces. W. Winding Way across Paradise Cove. \$5580/mo., first, last and deposit. Available June 1. 310-457-4214, cugas48864@aol.com.

0604

Welcome "Pep Law." Ready for Aug. 1 occupancy. MCV unit. Can accommodate 3. Completely remodeled. Quarter-mile from campus. Underground parking. Security gated. Pool, tennis, sauna. www.maliburentals.com 310-403-3737.

0528

Breathtaking ocean view, 2-story freshly painted home. 3 bd., 2 1/2 ba. Open beam ceilings. Large fenced yard. Dogs OK. Many fruit trees. Fireplace. \$3950/ mo. Lease. 310-403-3737. www.maliburentals.com

0528

Malibu LaCosta area luxury unit. Whitewater ocean view, 1 bd., den, 2 ba., vaulted ceilings, wood-burning fireplace, close to town. \$2600/mo. References required. No dogs. 310-456-6736.

0618

RENTALS WANTED

30-year-old female wants to rent guesthouse, studio, 1 bd., or trailer by the beach. Local ref. Quiet, non-smoker. Long or short term. 310-614-5995.

0528

RENTALS WANTED

Handyman and son, 25-year Malibu resident seeking place for fifth wheeler. Rent/exchange. Local ref. Dan 310-457-9378.

0528

SERVICES

SECRETARY
30 Years in Malibu
Carol on call
310-457-3120
Scripts, Book Ms.
Resumes, Mailing Lists
Legal Briefs, Notary, Editing
Ghost Writing, Member WGAw

TREE TRIMMING

Environmental Tree Care, Inc. Complete tree service and fully insured. Serving the community for the past 20 years. Give us a call for professional service. Lic. #725258. 310-456-5969.

1126

TUTOR WANTED

Experienced Tutor needed: I am seeking a tutor for a 14 yr. old boy (well behaved, shy) and a home schooling 1st grader. Instruction will take place in my home three days a week, hours are flexible, to begin between 8 a.m.-8 p.m. and lessons should last about 60 min. Subjects: math, science, reading, English. Interested please reply by email "gregoryslaw@aol.com." \$50 per hour.

0611

www.malibusurfsidenews.com

The BULLETIN BOARD

SERVICES

MIRRORS
-CUSTOM-
SHOWER DOORS • WINDBREAKS
• REASONABLE RATES •
MALIBU GLASS 456-1844

PCH COLLECTIVE

Located on the hill up the first driveway north of PC Greens.

22609 PACIFIC COAST HIGHWAY

phone: 310.456.0666

hours of operation:
MON-SAT 11AM-8PM / SUN 12PM-6PM

visit us online @ www.pchcollective.com

SCREENS
Bring in & save
★ Window Replacements ★
MALIBU GLASS
3547 Winter Canyon Road 456-1844

Malibu Maintenance
Residential/Commercial
Complete Housecleaning
Reasonable Rates
Call Now For
CLEANING SPECIALS
• Bathrooms • Windows • Carpets • Floors • New Construction
• Local References • Weekly/Monthly Service • Schedules Available
310-810-2389 • 310-387-5408
20 years local experience

PHOTOGRAPHY
Weddings and Events
FRANK LAMONEA
818-706-1138
PHOTOGRAPHY

BOTANICA
distinctive indoor plantings
expert care
310 • 456 • 8202

**BROAD BEACH ROAD**

Malibu Beach: Perfect weekender on prestigious Broad Beach Road with private beach rights to West Sea Level Drive!

\$1,599,000
Isabel Miller 310.456.6771

**REMODEL OPPORTUNITY**

Malibu: Beautiful estate property overlooking Carbon Beach on approx. 2 very private acres. Opportunity to remodel existing wood & glass, home or create your dream. La Costa beach rights included.

\$2,950,000
Jack Pritchett/Jeff Chertow 310.456.6771

**BRAND NEW**

Malibu: Doug Burdge Pt. Dume home. Huge ocean views, incredible landscape. 5 bedrooms, 5 baths. Walk to beach and Pt. Dume Elementary.

\$4,395,000
Mike Cunningham 310.456.6771

**MALIBU'S ULTIMATE RANCH!**

Malibu: Only 8 minutes from Zuma Beach is 320 acres of Malibu's finest ranch land. 2 homes, lakes, tons of flat and useable. Great ocean views. Potential for 6 vineyard/equestrian estates.

\$17,900,000
Kirk Murray/Chris Frost 310.456.5621

**INCREDIBLE VIEWS**

Malibu: Stunning mountain views 5 bedrooms plus loft. Flat grassy yard, 2 large entertaining decks. Priced to sell! Easy to show. Also available for rent @ \$5,500.

\$1,337,000
Mike Cunningham 310.456.6771

**PRIVATE ESTATE**

Malibu: Completely secluded yet close in 3 acre estate. Approximately 6000 sq. ft. two story home. Beautifully manicured grounds, tennis court, pool, horse facilities and so much more!

\$6,950,000
Brant Didden/Jim Rapf 310.456.5621

**MALIBU PARK LAND**

Malibu: Beautiful lot on Morning View Drive with final Malibu City and Coastal Comm. approvals for approx. 6500 sq. ft. architectural style home designed by David Paul Urmston.

\$1,370,000
Shen Schulz 310.456.6771

**2.75 ACRE RETREAT**

Malibu: Recently upgraded with outdoor entertaining area, wine care & stone guest house. Handcrafted rock walls throughout property. Mature oaks and pines and views! The perfect hideaway!

\$1,749,000
Jack Pritchett/Chris Frost/Brant Didden 310.456.5621

**OCEAN VIEWS**

Malibu: Great location across from the Bluff. Ocean views of Santa Monica Bay. Home is a newer 3 BDR + 2 BA, open floor plan, high ceilings, fireplace with bonus room. Large outdoor deck.

\$2,100,000
Kirk Murray/David Carter 310.456.5621

**PARADISE COVE**

Malibu: Owner bought another! Must sell! Best price for a remodeled 3BR + 2BA unit. Hardwood floors, tiled bathrooms, newer kitchen w/granite counters, low space rent.

\$575,000
Kirk Murray 310.456.6771

**CARBON BEACH PENTHOUSE**

Malibu: Beautiful, light and bright 2 bedroom condo on the water at Carbon beach! Great building offering controlled access and a pool. Perfectly located in central Malibu.

\$1,995,000
Jeff Chertow/Lenny Goldsmith 310.456.6771

**LOWEST PRICED MFG**

Malibu: Very clean and original, lowest priced MFG home in Point Dume Club. 2 + 2 + den, walk in closet in master, covered porch and convenient location.

\$435,000
Shen Schulz 310.456.6771

**PREMIER BLUFF LOCATION**

Malibu: Amazing sunset views over Zuma Beach. Vaulted ceilings, additional room can make 4th bedroom. Large deck and entertainment areas, community pool, spa and tennis.

\$975,000
Shen Schulz 310.456.6771

**PT DUME CLUB**

Malibu: Fantastic ocean, mountain and sunset views from this well priced move-in condition home. 2 BR + 2BA w/a bonus room, garden, private deck, open floor plan. Low space rent.

\$395,000
Kirk Murray 310.456.5621

**REMODELED MFG**

Malibu: Newly remodeled 2+2+office, MFG in Point Dume Club. Features gourmet kitchen w/Viking stove and Bosch dishwasher. Community pool + spa. Walking distance to shops and beach!

\$399,000
Shen Schulz 310.456.6771

**STUNNING WHITEWATER OCEAN VIEWS**

Malibu: Upgraded 2 + 2.5 beauty! This one has it all - top floor, corner unit, double balcony, 2 fireplaces. Includes covered, separate storage room! Steps to beach!

\$995,000 Susan Cosentino 310.456.6771

**WANNA GET AWAY?!**

Malibu: Great ocean view 2 bedroom, 1.5 bath at Tivoli Cove! Beautiful expo designed kitchen, Italian laminate cabinets, state of the art appliances, guard gated complex pool, volleyball, gym!

\$1,100,000
Susan Cosentino 310.456.6771

**FABULOUS MONTE NIDO**

Malibu: Spectacular mountain & meadow views from amazing Monte Nido property! Eat-in kitchen, Viking range, limestone counters, hardwood floors & open beamed ceilings throughout. Beautiful grounds! Don't miss!!

\$1,350,000
Susan Cosentino 310.456.6771

**TROPICAL PARADISE**

Malibu: on almost 1/2 acre overlooking Zuma beach w/incredible panoramic ocean views. 2 bed, 2 bath contemporary w/ private pool & ocean view sundecks.

Avail furnished for \$8,500/mo
\$6,500/mo unfurnished
John Cosentino 310.456.6771

**ESCONDIDO BEACHFRONT**

Malibu: Magical residence on 65 ft. of SANDY beach. Original vintage charm blended with all of today's modern amenities.

\$30,000/mo
Isabel Miller 310.456.6771

**PRIVATE COVE COLONY LEASE**

Malibu: Modern 50's home on 70' of beachfront, completely renovated. Open living, dining, kitchen. Den with projection theatre. Large oceanfront deck, nice backyard with outdoor living room & fire pit. Available July & August

\$30,000/mo
Jim Rapf 310.456.6771

**MALIBU ROAD BEACH HOUSE**

Malibu: 'Dreamy' beachfront cottage. Luxuriously restored 2 BR, 2BA, long or short term lease. Perfect for the "five star finicky"!

\$20,000/mo
Isabel Miller 310.456.6771

**MID-CENTURY MODERN HOUSE**

Malibu: 2 BR, 2 BA. Master bedroom with ocean view and private deck offers the ultimate Malibu experience! Available now!

\$14,000/mo
Shen Schulz 310.456.6771

**CHARMING RANCH HOME**

Malibu: 4 bedroom, 3 bath. Huge fantastic backyard in one of Malibu's best neighborhoods. Price includes Beach Rights and Tennis Club.

\$5,700/month
John Cosentino 310.365.2001

**CARBON BEACH CLASSIC**

Malibu: Fantastic home, gorgeous furnishings. 4BR + 4BA Mediterranean on beautiful sandy beach, perfect for entertaining. Master suite is entire 2nd flr. Complete guest house. Avail July & August.

\$75,000/mo
Jim Rapf 310.456.6771

**FULLY FURNISHED CONDO**

Malibu: Latigo Beach, Tivolia Cove complex. 2 bedroom, 2 bath and loft. Gated resort living. Premier location near pool/spa. Ocean and city lights view.

\$4,100/month
Shen Schulz 310.456.6771

**WIDE OPEN OCEAN VIEWS!**

Malibu: North parcel of Rambla Ridge Estates. Will have gated entrance, paved access and utilities to site. Also possible to buy any of 3 adjacent parcels.

\$1,350,000
Chris Frost/Brant Didden 310.456.6771

**RAMBLA RIDGE ESTATES**

Malibu: South parcel in this package of 4. Can buy any of 3 adjacent parcels separately or whole package. Wide open ocean views from building site.

\$1,450,000
Chris Frost/Brant Didden 310.456.6771

**RAMBLA RIDGE ESTATES**

Malibu: East parcel in this package of 4. Can buy any of 3 adjacent parcels separately or whole package. Wide open ocean views from building site.

\$1,250,000
Chris Frost/Brant Didden 310.456.6771

**NEW LISTING!**

Malibu: West parcel of Rambla Ridge Estates. Wide open ocean views. Will have gated entrance, paved road and utilities to pad. 3 adjacent parcels also available.

\$650,000
Chris Frost/Brant Didden 310.456.6771