

# Welcome to the NASA Section 106 Consultation Meeting

Santa Susana Field Laboratory  
National Historic Preservation Act  
Section 106 Consultation Meeting  
March 1, 2012

Ashley Boudreaux, SSFL Cultural Resources Manager

# Agenda

1. Ground Rules
2. Introductions
3. Section 106 Overview
4. SSFL Cultural Resources Summary
5. NASA's Proposed Actions
6. Area of Potential Effect (APE) Discussion
7. Tour of Historic Districts
8. Comments/Discussion
9. Next Steps

# Ground Rules

## PLEASE

- Treat everyone with respect
- Listen to each other and keep an open mind
- Do not interrupt each other - everyone will have plenty of opportunities to speak
- Stay on topic – cultural resources
- Any other suggestions?

# Introductions

NASA – Lead Federal Agency

- California State Historic Preservation Office (SHPO)
- Advisory Council on Historic Preservation (ACHP)
- General Services Administration (GSA)
- Consulting Parties

# Meeting Objectives

- Understanding of Section 106 Process for this undertaking
- Identifying Resources Being Considered
- Review Roles and NASA's Path Forward

## Consultation Objectives

- Obtain broad points of view regarding the desired end state of historic properties
- Comments should be submitted to NASA in writing

# NASA's Proposed Actions

1. Demolition of up to 100% of the structures
2. Soil Cleanup to Background levels


# What is Section 106?

It is NASA's responsibility to manage Historic Properties under the ***National Historic Preservation Act (NHPA) Section 106***

NHPA Section 106 requires federal agencies to:

- Take into account the effects of their proposed actions on historic properties
- Allows for consultation with ACHP, SHPO, Native American Tribes, and other interested parties

# Section 106 Process

1. Initiate the process
  2. Identify Historic Properties
  3. Assess adverse effects
  4. Resolve adverse effects
- 
- Consultation*



# Section 106 Process

Section 106 consultation is ***“the process of seeking, discussing, and considering the views of others, and, where feasible, seeking agreement with on how historic properties should be identified, considered, and managed.”***

Consultation is built upon the exchange of ideas, not simply providing information.

# Cultural Resources at SSFL



Historic Structures



Archaeological Sites

Cultural Resources = Historic Properties

# What are Historic Properties?

*Historic properties are any prehistoric or historic district, site, building, structure, or object included in, or eligible for inclusion in, the National Register of Historic Places maintained by the Secretary of the Interior. This term includes artifacts, records, and remains that are related to and located within such properties. The term includes properties of traditional religious and cultural importance to an Indian tribe and that meet the National Register criteria.*

# How do you determine Historical Significance?

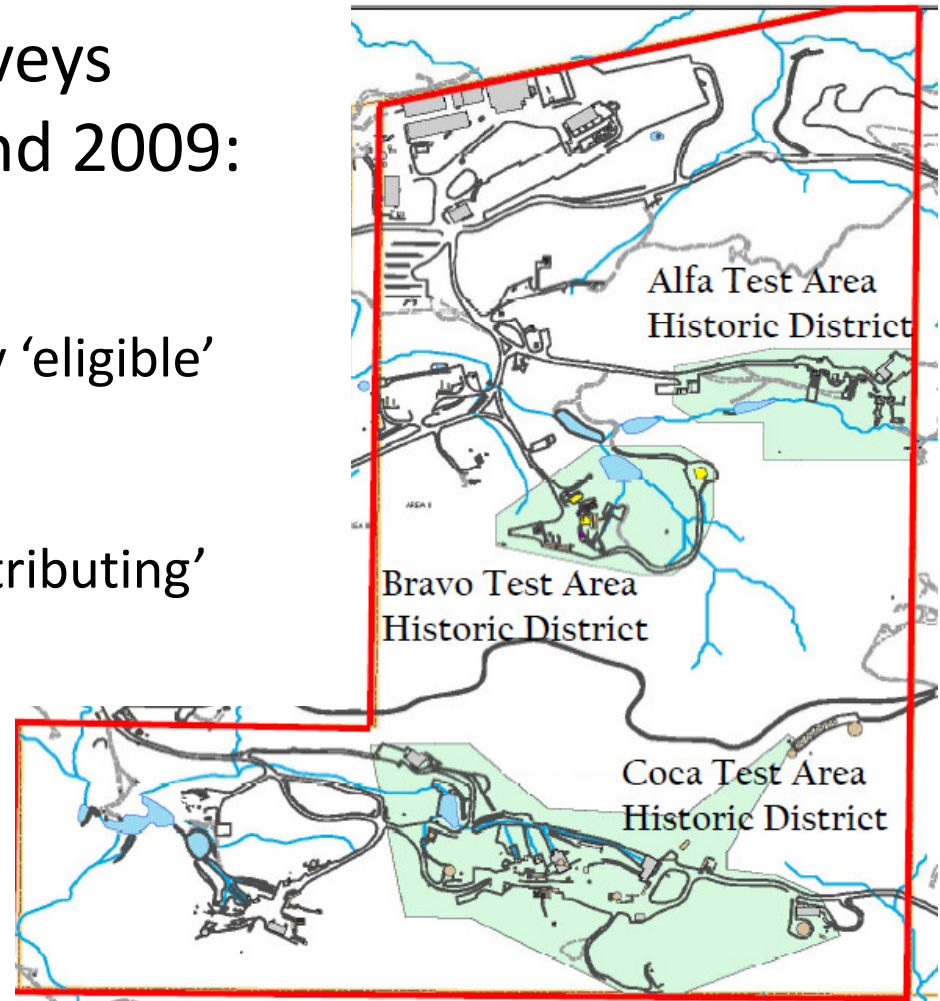
The **National Register of Historic Places (NRHP)** is the United States government's official list of districts, sites, buildings, structures, and objects deemed worthy of preservation.

- Historic Properties are evaluated and classified based on certain criteria:
  - a. Events, patterns in history
  - b. Significant individuals
  - c. Architecture, engineering, design
  - d. Potential to yield information

# Historic Properties on Area II

Two Historic/Structural surveys were performed in 2007 and 2009:

- 3 historic districts identified
  - 9 structures found individually 'eligible' for the NRHP
  - 27 structures considered 'contributing' to the historic districts





# Alfa

July 1955 – March  
2006



Engine Hot Fire Test on Alfa Test Stand - 1960



# Bravo

April 1956 – Dec 2004





# Coca

July 1956 – 1988



Coca Area - SSME Preps for Component Test - 1974





# Cultural Resources Surveys at SSFL

- 2008 - Site-wide Cultural Resources Inventory of 60% of NASA-administered Areas I and II completed
  - Reassessed the boundary of 1 site recorded on National Register
  - Contains multiple individual archaeological features
- 2009 - Interim Soil Removal Action (ISRA) prompted NASA to complete a cultural resources survey in the northern portion of Area II in 2009
  - No cultural resources identified
- 2011 - A 'data gap' cultural resources survey was completed
  - No cultural resources were identified
  - NASA is preparing report to send to SHPO for concurrence

# Archaeological Features at SSFL

**Pictograph Gallery**



**Bedrock milling features**



**Petroglyphs**



**Bedrock cupules**



# NASA's Proposed Actions

- Demolition of buildings (up to 100%)
- Cleanup of soil to background

# Integrating NEPA & Section 106

- National Environmental Policy Act (NEPA)
  - NEPA requires Federal Agencies to evaluate impacts to the environment
  - NASA is using the most detailed and rigorous level of NEPA called an **Environmental Impact Statement (EIS)**
    - One of the analysis of the EIS evaluates potential impacts to Cultural Resources

# Integrating NEPA & Section 106

- NASA has chosen to integrate the NEPA and the Section 106 process.
- Consultation with SHPO, ACHP, Consulting Parties
- Section 106 consultation will be documented in the EIS

## NEPA process

## NHPA Section 106

Notice of Intent to prepare an EIS  
(July 2011)

Initiate Section 106  
(June 2011)

Scoping Meetings and public comment  
(Summer 2011)

Tribes, State Historic Preservation  
Office (SHPO), and other parties  
provide input on historic properties.

NASA publishes  
Draft EIS

Public reviews Draft EIS and provides  
comments

Conclude consultation  
(end of NHPA Section 106)

NASA publishes  
Final EIS

Public: Availability of Final EIS

Record of Decision  
(end of NEPA)

Public input to the EIS



# Consulting Party Role

- Attend and participate in Section 106 meetings
  - Consultation meetings that focus specifically on Historic Properties
- End result of Section 106
  - Document results of consultations in an appendix of the EIS
- Discussions and recommendations from Section 106 will be taken into consideration in final decision making
- Final decisions by NASA regarding historic properties will be incorporated into the ROD

# Area of Potential Effect

Proposed Undertaking: Demolition

Up to 100%





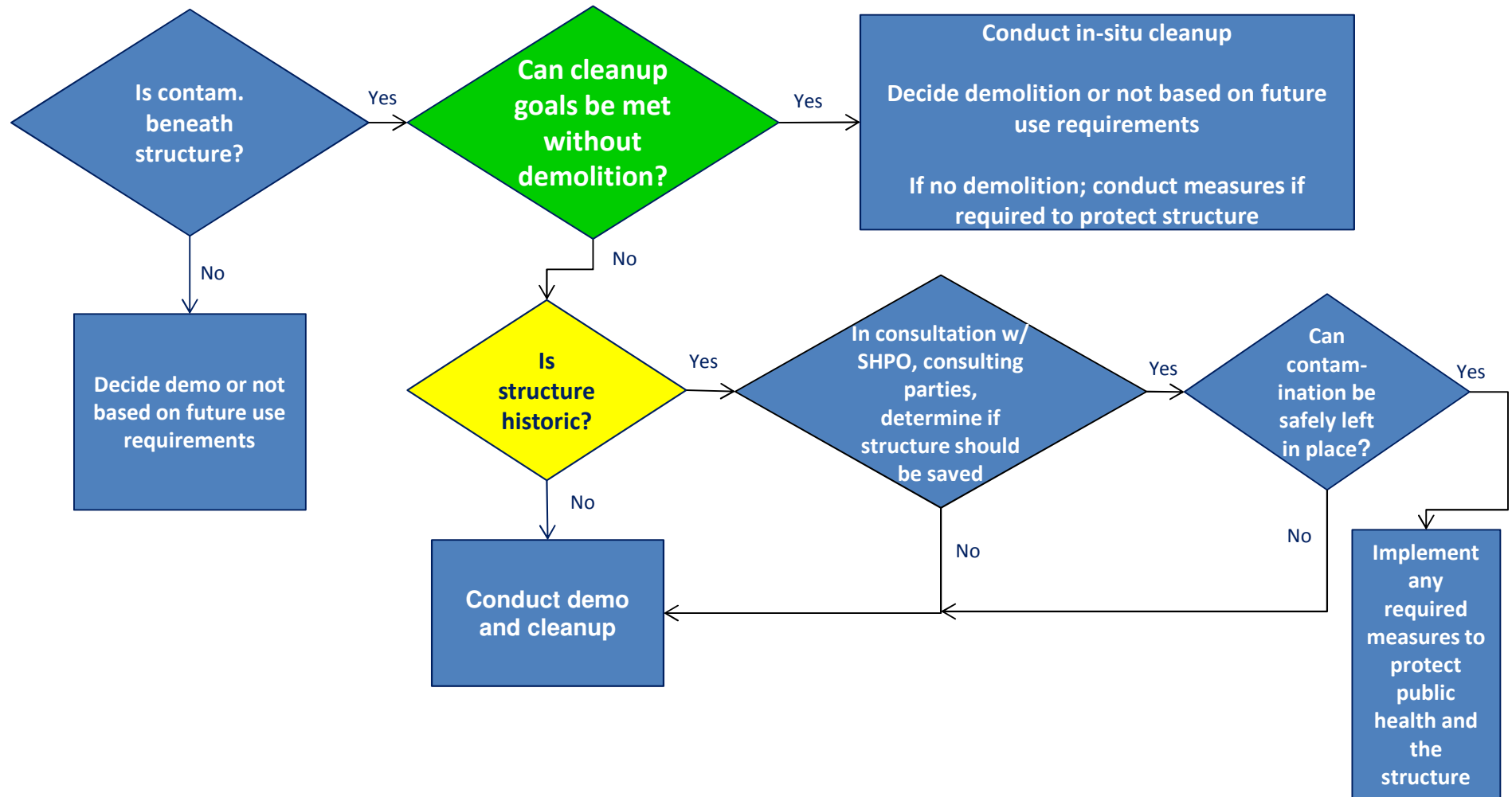
# Area of Potential Effect

Proposed Action 2:

Cleanup of soil to background



# Buildings Demolition Determination



# Questions

- Regarding
  - Section 106 Process
  - NASA's Historic Properties

# Tour

Safety

Water

Hat, sunglasses

Camera

# Afternoon Agenda

- Ground Rules
- Review proposed actions
- Review Area of Potential Effect
- Begin discussion regarding future

# Ground Rules

## PLEASE

- Treat everyone with respect
- Listen to each other – keep an open mind
- Do not interrupt - everyone will have plenty of opportunities to speak
- Stay on topic – cultural resources



# Review: NASA's Proposed Actions

- Demolition of buildings (up to 100%)
- Cleanup of soil to background

# Review: Area of Potential Effect

Proposed Undertaking: Demolition

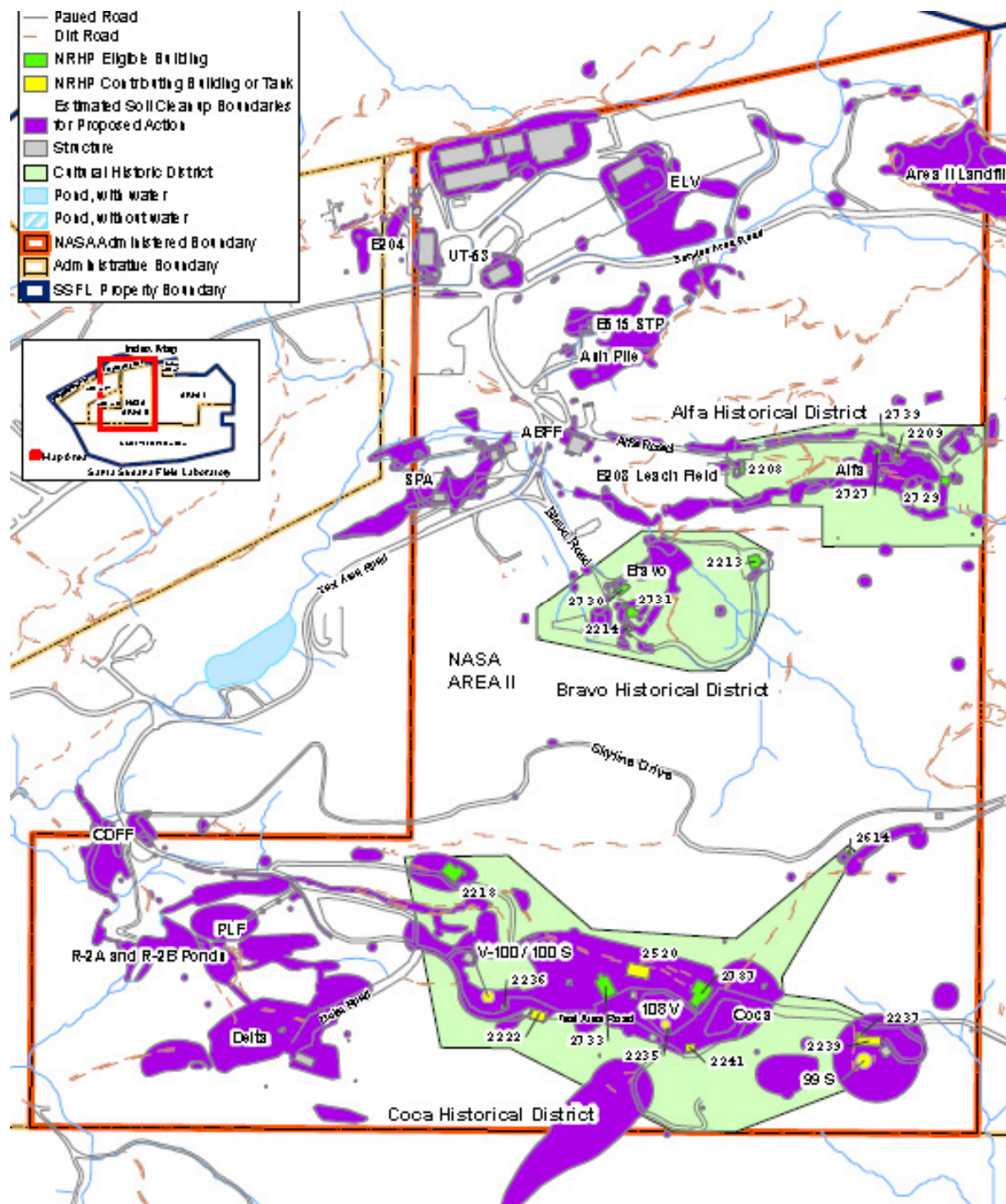
Up to 100%



# Review: Area of Potential Effect

Proposed Action 2:

Cleanup of soil to background



# Discussion – Historic Structures

1. Demolition of structures within Historic Districts?
  - Is there a way to document and record the structures?
  - The Historic American Buildings Survey (HABS) and the Historic American Engineering Record (HAER)
  - Other Ideas?
2. Retain structure(s) within Historic Districts?
  - How would the structure be maintained?
  - Ideas?

# Discussion – Archaeological Site

1. Cleanup soil near the site?
  - Other remedial technology other than excavation?

# Next steps

- Meeting notes will be posted on NASA SSFL webpage
- Consulting Parties must submit all comments in writing
- Tag up monthly
- Review Draft EIS - Summer 2012



SSFL Cultural Resources Manager  
Marshall Space Flight Center  
Mail Code: AS10  
Huntsville, AL 35812

Ashley Boudreaux  
NASA SSFL Cultural Resources Manager  
[Ashley.E.Boudreaux@nasa.gov](mailto:Ashley.E.Boudreaux@nasa.gov)

Merrilee Fellows  
NASA Communications Officer  
[Mfellows@nasa.gov](mailto:Mfellows@nasa.gov)

